

BILL BARRETT CORP

WELD COUNTY, COLORADO

Greasewood 04-08H

Greasewood 04-08H

Greasewood 04-08H

Plan: Design #4

Standard Planning Report

25 September, 2012



Bill Barrett Corporation

SITE DETAILS: Greasewood 04-08H
NE Wattenberg

Site Latitude: 40° 29' 48.890 N
Site Longitude: 104° 14' 1.889 W

COMPANY DETAILS: BILL BARRETT CORP

Calculation Method: Minimum Curvature
Error System: ISCWSA
Scan Method: Closest Approach 3D
Error Surface: Elliptical Conic
Warning Method: Error Ratio

Positional Uncertainty: 0.0
Convergence: 0.82
Local North: True

WELL DETAILS: Greasewood 04-08H

Ground Level: 4686.0

	+N/-S	+E/-W	Northing	Easting	Latitude	Longitude	Slot
	0.0	0.0	1426380.14	3352117.58	40° 29' 48.890 N	104° 14' 1.889 W	

WELLBORE TARGET DETAILS (LAT/LONG)

Name	TVD	+N/-S	+E/-W	Latitude	Longitude	Shape
Greasewood 04-08H BTV	5151.0	-570.0	159.1	40° 29' 43.258 N	104° 13' 59.829 W	Point
Greasewood 04-08H PBHL	6263.0	4041.6	159.1	40° 30' 28.829 N	104° 13' 59.830 W	Point

SECTION DETAILS

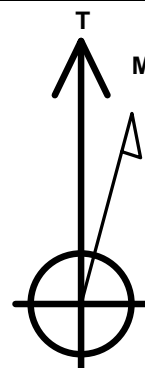
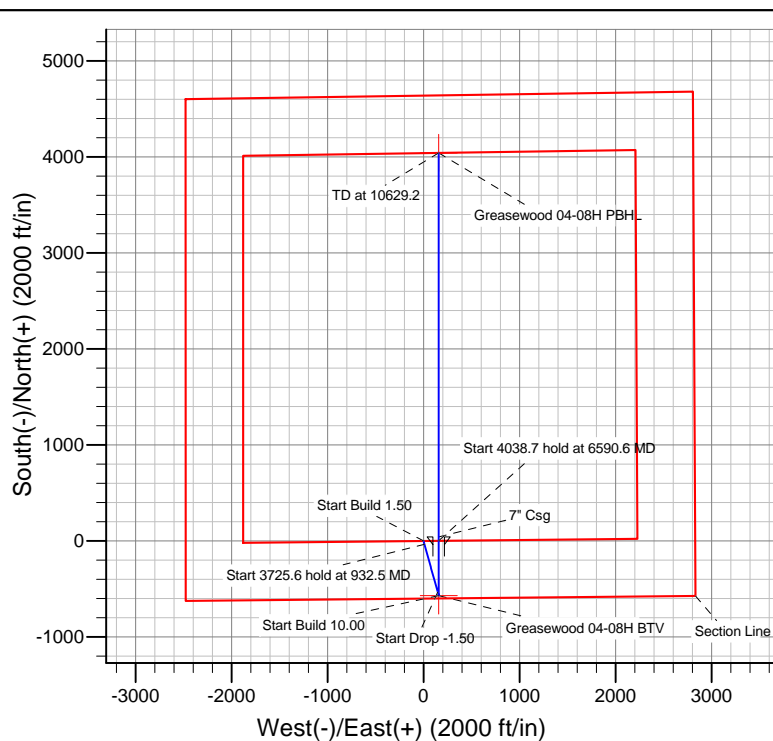
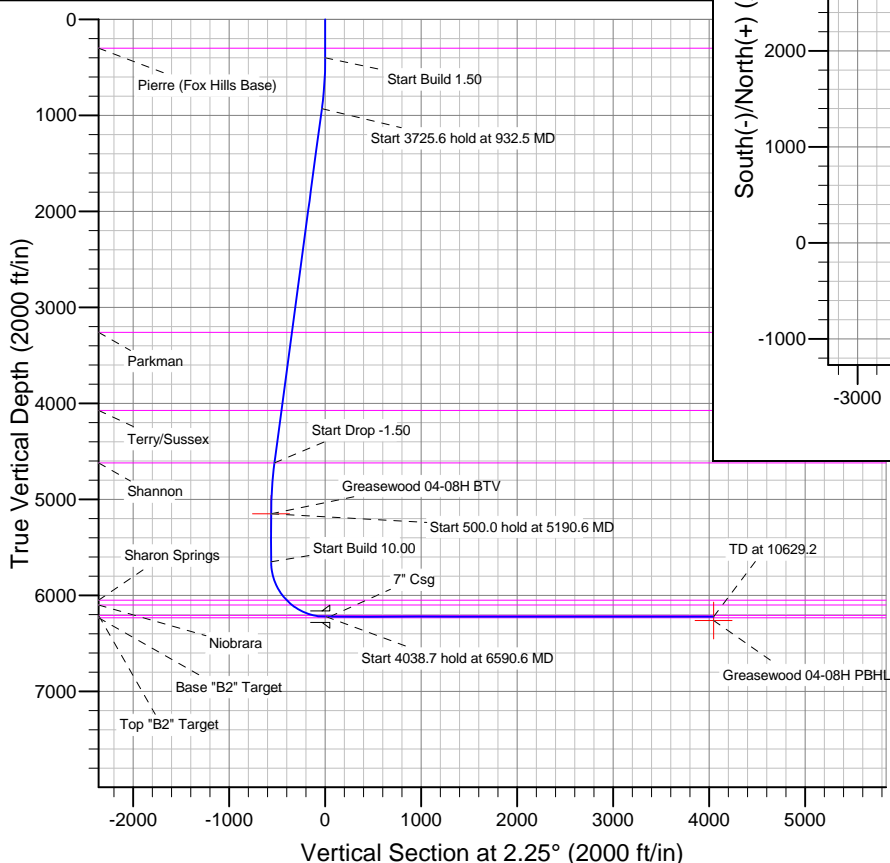
Sec	MD	Inc	Azi	TVD	+N/-S	+E/-W	DLeg	TFace	VSec	Target
1	0.0	0.00	0.00	0.0	0.0	0.0	0.00	0.00	0.0	
2	400.0	0.00	0.00	400.0	0.0	0.0	0.00	0.00	0.0	
3	932.5	7.99	164.40	930.8	-35.7	10.0	1.50	164.40	-35.3	
4	4658.1	7.99	164.40	4620.2	-534.3	149.1	0.00	0.00	-528.0	
5	5190.6	0.00	0.00	5151.0	-570.0	159.1	1.50	180.00	-563.3	Greasewood 04-08H BTV
6	5690.6	0.00	0.00	5651.0	-570.0	159.1	0.00	0.00	-563.3	
7	6590.6	90.00	0.00	6224.0	3.0	159.1	10.00	0.00	9.2	
8	10629.2	90.00	0.00	6224.0	4041.6	159.1	0.00	0.00	4044.7	Greasewood 04-08H PBHL

FORMATION TOP DETAILS

TVDPath	MDPath	Formation
301.0	301.0	Base "B2" Target
3261.0	3285.5	Pierre (Fox Hills Base)
4074.0	4106.5	Parkman
4621.0	4658.9	Terry/Sussex
6051.0	6133.4	Shannon
6101.0	6208.2	Sharon Springs
6209.0	6459.4	Niobrara
		Top "B2" Target

CASING DETAILS

TVD	MD	Name	Size
6224.0	6629.2	7" Csg	7



Azimuths to True North
Magnetic North: 8.42°

Magnetic Field
Strength: 53109.8snT
Dip Angle: 67.17°
Date: 9/4/2012
Model: IGRF2010

Bill Barrett Corp

Planning Report

Database:	Compass	Local Co-ordinate Reference:	Well Greasewood 04-08H
Company:	BILL BARRETT CORP	TVD Reference:	KB @ 4710.0ft (Original Well Elev)
Project:	WELD COUNTY, COLORADO	MD Reference:	KB @ 4710.0ft (Original Well Elev)
Site:	Greasewood 04-08H	North Reference:	True
Well:	Greasewood 04-08H	Survey Calculation Method:	Minimum Curvature
Wellbore:	Greasewood 04-08H		
Design:	Design #4		

Project	WELD COUNTY, COLORADO		
Map System:	US State Plane 1983	System Datum:	Mean Sea Level
Geo Datum:	North American Datum 1983		
Map Zone:	Colorado Northern Zone		

Site		Greasewood 04-08H			
Site Position:		Northing:	1,426,380.15 ft	Latitude:	40° 29' 48.890 N
From:	Lat/Long	Easting:	3,352,117.58 ft	Longitude:	104° 14' 1.889 W
Position Uncertainty:	0.0 ft	Slot Radius:	"	Grid Convergence:	0.82 °

Well	Greasewood 04-08H					
Well Position	+N/-S	0.0 ft	Northing:	1,426,380.14 ft	Latitude:	40° 29' 48.890 N
	+E/-W	0.0 ft	Easting:	3,352,117.58 ft	Longitude:	104° 14' 1.889 W
Position Uncertainty		0.0 ft	Wellhead Elevation:	ft	Ground Level:	4,686.0 ft

Wellbore	Greasewood 04-08H				
Magnetics	Model Name	Sample Date	Declination (°)	Dip Angle (°)	Field Strength (nT)
	IGRF2010	9/4/2012	8.42	67.17	53,110

Design	Design #4			
Audit Notes:				
Version:	Phase:	PLAN	Tie On Depth:	0.0
Vertical Section:	Depth From (TVD) (ft)	+N/-S (ft)	+E/-W (ft)	Direction (°)
	0.0	0.0	0.0	2.25

Plan Sections										
Measured Depth (ft)	Inclination (°)	Azimuth (°)	Vertical Depth (ft)	+N/-S (ft)	+E/-W (ft)	Dogleg Rate (°/100ft)	Build Rate (°/100ft)	Turn Rate (°/100ft)	TFO (°)	Target
0.0	0.00	0.00	0.0	0.0	0.0	0.00	0.00	0.00	0.00	
400.0	0.00	0.00	400.0	0.0	0.0	0.00	0.00	0.00	0.00	
932.5	7.99	164.40	930.8	-35.7	10.0	1.50	1.50	0.00	164.40	
4,658.1	7.99	164.40	4,620.2	-534.3	149.1	0.00	0.00	0.00	0.00	
5,190.6	0.00	0.00	5,151.0	-570.0	159.1	1.50	-1.50	0.00	180.00	Greasewood 04-08H
5,690.6	0.00	0.00	5,651.0	-570.0	159.1	0.00	0.00	0.00	0.00	
6,590.6	90.00	0.00	6,224.0	3.0	159.1	10.00	10.00	0.00	0.00	
10,629.2	90.00	0.00	6,224.0	4,041.6	159.1	0.00	0.00	0.00	0.00	Greasewood 04-08H

Bill Barrett Corp

Planning Report

Database:	Compass	Local Co-ordinate Reference:	Well Greasewood 04-08H
Company:	BILL BARRETT CORP	TVD Reference:	KB @ 4710.0ft (Original Well Elev)
Project:	WELD COUNTY, COLORADO	MD Reference:	KB @ 4710.0ft (Original Well Elev)
Site:	Greasewood 04-08H	North Reference:	True
Well:	Greasewood 04-08H	Survey Calculation Method:	Minimum Curvature
Wellbore:	Greasewood 04-08H		
Design:	Design #4		

Planned Survey									
Measured Depth (ft)	Inclination (°)	Azimuth (°)	Vertical Depth (ft)	+N/-S (ft)	+E/-W (ft)	Vertical Section (ft)	Dogleg Rate (°/100ft)	Build Rate (°/100ft)	Turn Rate (°/100ft)
0.0	0.00	0.00	0.0	0.0	0.0	0.0	0.00	0.00	0.00
100.0	0.00	0.00	100.0	0.0	0.0	0.0	0.00	0.00	0.00
200.0	0.00	0.00	200.0	0.0	0.0	0.0	0.00	0.00	0.00
300.0	0.00	0.00	300.0	0.0	0.0	0.0	0.00	0.00	0.00
301.0	0.00	0.00	301.0	0.0	0.0	0.0	0.00	0.00	0.00
Pierre (Fox Hills Base)									
400.0	0.00	0.00	400.0	0.0	0.0	0.0	0.00	0.00	0.00
500.0	1.50	164.40	500.0	-1.3	0.4	-1.2	1.50	1.50	0.00
600.0	3.00	164.40	599.9	-5.0	1.4	-5.0	1.50	1.50	0.00
700.0	4.50	164.40	699.7	-11.3	3.2	-11.2	1.50	1.50	0.00
800.0	6.00	164.40	799.3	-20.2	5.6	-19.9	1.50	1.50	0.00
900.0	7.50	164.40	898.6	-31.5	8.8	-31.1	1.50	1.50	0.00
932.5	7.99	164.40	930.8	-35.7	10.0	-35.3	1.50	1.50	0.00
1,000.0	7.99	164.40	997.6	-44.7	12.5	-44.2	0.00	0.00	0.00
1,100.0	7.99	164.40	1,096.7	-58.1	16.2	-57.4	0.00	0.00	0.00
1,200.0	7.99	164.40	1,195.7	-71.5	20.0	-70.7	0.00	0.00	0.00
1,300.0	7.99	164.40	1,294.7	-84.9	23.7	-83.9	0.00	0.00	0.00
1,400.0	7.99	164.40	1,393.7	-98.3	27.4	-97.1	0.00	0.00	0.00
1,500.0	7.99	164.40	1,492.8	-111.6	31.2	-110.3	0.00	0.00	0.00
1,600.0	7.99	164.40	1,591.8	-125.0	34.9	-123.6	0.00	0.00	0.00
1,700.0	7.99	164.40	1,690.8	-138.4	38.6	-136.8	0.00	0.00	0.00
1,800.0	7.99	164.40	1,789.9	-151.8	42.4	-150.0	0.00	0.00	0.00
1,900.0	7.99	164.40	1,888.9	-165.2	46.1	-163.2	0.00	0.00	0.00
2,000.0	7.99	164.40	1,987.9	-178.6	49.8	-176.5	0.00	0.00	0.00
2,100.0	7.99	164.40	2,087.0	-191.9	53.6	-189.7	0.00	0.00	0.00
2,200.0	7.99	164.40	2,186.0	-205.3	57.3	-202.9	0.00	0.00	0.00
2,300.0	7.99	164.40	2,285.0	-218.7	61.0	-216.1	0.00	0.00	0.00
2,400.0	7.99	164.40	2,384.0	-232.1	64.8	-229.4	0.00	0.00	0.00
2,500.0	7.99	164.40	2,483.1	-245.5	68.5	-242.6	0.00	0.00	0.00
2,600.0	7.99	164.40	2,582.1	-258.9	72.3	-255.8	0.00	0.00	0.00
2,700.0	7.99	164.40	2,681.1	-272.2	76.0	-269.0	0.00	0.00	0.00
2,800.0	7.99	164.40	2,780.2	-285.6	79.7	-282.3	0.00	0.00	0.00
2,900.0	7.99	164.40	2,879.2	-299.0	83.5	-295.5	0.00	0.00	0.00
3,000.0	7.99	164.40	2,978.2	-312.4	87.2	-308.7	0.00	0.00	0.00
3,100.0	7.99	164.40	3,077.3	-325.8	90.9	-322.0	0.00	0.00	0.00
3,200.0	7.99	164.40	3,176.3	-339.2	94.7	-335.2	0.00	0.00	0.00
3,285.5	7.99	164.40	3,261.0	-350.6	97.9	-346.5	0.00	0.00	0.00
Parkman									
3,300.0	7.99	164.40	3,275.3	-352.5	98.4	-348.4	0.00	0.00	0.00
3,400.0	7.99	164.40	3,374.3	-365.9	102.1	-361.6	0.00	0.00	0.00
3,500.0	7.99	164.40	3,473.4	-379.3	105.9	-374.9	0.00	0.00	0.00
3,600.0	7.99	164.40	3,572.4	-392.7	109.6	-388.1	0.00	0.00	0.00
3,700.0	7.99	164.40	3,671.4	-406.1	113.3	-401.3	0.00	0.00	0.00
3,800.0	7.99	164.40	3,770.5	-419.5	117.1	-414.5	0.00	0.00	0.00
3,900.0	7.99	164.40	3,869.5	-432.8	120.8	-427.8	0.00	0.00	0.00
4,000.0	7.99	164.40	3,968.5	-446.2	124.6	-441.0	0.00	0.00	0.00
4,100.0	7.99	164.40	4,067.5	-459.6	128.3	-454.2	0.00	0.00	0.00
4,106.5	7.99	164.40	4,074.0	-460.5	128.5	-455.1	0.00	0.00	0.00
Terry/Sussex									
4,200.0	7.99	164.40	4,166.6	-473.0	132.0	-467.4	0.00	0.00	0.00
4,300.0	7.99	164.40	4,265.6	-486.4	135.8	-480.7	0.00	0.00	0.00
4,400.0	7.99	164.40	4,364.6	-499.8	139.5	-493.9	0.00	0.00	0.00
4,500.0	7.99	164.40	4,463.7	-513.1	143.2	-507.1	0.00	0.00	0.00

Bill Barrett Corp

Planning Report

Database:	Compass	Local Co-ordinate Reference:	Well Greasewood 04-08H
Company:	BILL BARRETT CORP	TVD Reference:	KB @ 4710.0ft (Original Well Elev)
Project:	WELD COUNTY, COLORADO	MD Reference:	KB @ 4710.0ft (Original Well Elev)
Site:	Greasewood 04-08H	North Reference:	True
Well:	Greasewood 04-08H	Survey Calculation Method:	Minimum Curvature
Wellbore:	Greasewood 04-08H		
Design:	Design #4		

Planned Survey									
Measured Depth (ft)	Inclination (°)	Azimuth (°)	Vertical Depth (ft)	+N/-S (ft)	+E/-W (ft)	Vertical Section (ft)	Dogleg Rate (°/100ft)	Build Rate (°/100ft)	Turn Rate (°/100ft)
4,600.0	7.99	164.40	4,562.7	-526.5	147.0	-520.3	0.00	0.00	0.00
4,658.1	7.99	164.40	4,620.2	-534.3	149.1	-528.0	0.00	0.00	0.00
4,658.9	7.98	164.40	4,621.0	-534.4	149.2	-528.1	1.50	-1.50	0.00
Shannon									
4,700.0	7.36	164.40	4,661.8	-539.7	150.6	-533.4	1.50	-1.50	0.00
4,800.0	5.86	164.40	4,761.1	-550.8	153.7	-544.3	1.50	-1.50	0.00
4,900.0	4.36	164.40	4,860.7	-559.4	156.1	-552.8	1.50	-1.50	0.00
5,000.0	2.86	164.40	4,960.5	-565.4	157.8	-558.8	1.50	-1.50	0.00
5,100.0	1.36	164.40	5,060.4	-569.0	158.8	-562.3	1.50	-1.50	0.00
5,190.6	0.00	0.00	5,151.0	-570.0	159.1	-563.3	1.50	-1.50	0.00
Greasewood 04-08H BTV									
5,200.0	0.00	0.00	5,160.4	-570.0	159.1	-563.3	0.00	0.00	0.00
5,300.0	0.00	0.00	5,260.4	-570.0	159.1	-563.3	0.00	0.00	0.00
5,400.0	0.00	0.00	5,360.4	-570.0	159.1	-563.3	0.00	0.00	0.00
5,500.0	0.00	0.00	5,460.4	-570.0	159.1	-563.3	0.00	0.00	0.00
5,600.0	0.00	0.00	5,560.4	-570.0	159.1	-563.3	0.00	0.00	0.00
5,690.6	0.00	0.00	5,651.0	-570.0	159.1	-563.3	0.00	0.00	0.00
5,700.0	0.94	0.00	5,660.4	-569.9	159.1	-563.2	10.00	10.00	0.00
5,800.0	10.94	0.00	5,759.7	-559.6	159.1	-552.9	10.00	10.00	0.00
5,900.0	20.94	0.00	5,855.8	-532.2	159.1	-525.5	10.00	10.00	0.00
6,000.0	30.94	0.00	5,945.6	-488.5	159.1	-481.8	10.00	10.00	0.00
6,100.0	40.94	0.00	6,026.5	-429.8	159.1	-423.3	10.00	10.00	0.00
6,133.4	44.28	0.00	6,051.0	-407.3	159.1	-400.7	10.00	10.00	0.00
Sharon Springs									
6,200.0	50.94	0.00	6,095.9	-358.1	159.1	-351.5	10.00	10.00	0.00
6,208.2	51.76	0.00	6,101.0	-351.7	159.1	-345.2	10.00	10.00	0.00
Niobrara									
6,300.0	60.94	0.00	6,151.8	-275.3	159.1	-268.9	10.00	10.00	0.00
6,400.0	70.94	0.00	6,192.6	-184.1	159.1	-177.7	10.00	10.00	0.00
6,459.4	76.88	0.00	6,209.0	-127.1	159.1	-120.8	10.00	10.00	0.00
Top "B2" Target									
6,500.0	80.94	0.00	6,216.8	-87.3	159.1	-80.9	10.00	10.00	0.00
6,590.6	90.00	0.00	6,224.0	3.0	159.1	9.2	10.00	10.00	0.00
6,600.0	90.00	0.00	6,224.0	12.4	159.1	18.6	0.00	0.00	0.00
6,629.2	90.00	0.00	6,224.0	41.6	159.1	47.8	0.00	0.00	0.00
7" Csg									
6,700.0	90.00	0.00	6,224.0	112.4	159.1	118.5	0.00	0.00	0.00
6,800.0	90.00	0.00	6,224.0	212.4	159.1	218.5	0.00	0.00	0.00
6,900.0	90.00	0.00	6,224.0	312.4	159.1	318.4	0.00	0.00	0.00
7,000.0	90.00	0.00	6,224.0	412.4	159.1	418.3	0.00	0.00	0.00
7,100.0	90.00	0.00	6,224.0	512.4	159.1	518.2	0.00	0.00	0.00
7,200.0	90.00	0.00	6,224.0	612.4	159.1	618.2	0.00	0.00	0.00
7,300.0	90.00	0.00	6,224.0	712.4	159.1	718.1	0.00	0.00	0.00
7,400.0	90.00	0.00	6,224.0	812.4	159.1	818.0	0.00	0.00	0.00
7,500.0	90.00	0.00	6,224.0	912.4	159.1	917.9	0.00	0.00	0.00
7,600.0	90.00	0.00	6,224.0	1,012.4	159.1	1,017.8	0.00	0.00	0.00
7,700.0	90.00	0.00	6,224.0	1,112.4	159.1	1,117.8	0.00	0.00	0.00
7,800.0	90.00	0.00	6,224.0	1,212.4	159.1	1,217.7	0.00	0.00	0.00
7,900.0	90.00	0.00	6,224.0	1,312.4	159.1	1,317.6	0.00	0.00	0.00
8,000.0	90.00	0.00	6,224.0	1,412.4	159.1	1,417.5	0.00	0.00	0.00
8,100.0	90.00	0.00	6,224.0	1,512.4	159.1	1,517.5	0.00	0.00	0.00
8,200.0	90.00	0.00	6,224.0	1,612.4	159.1	1,617.4	0.00	0.00	0.00
8,300.0	90.00	0.00	6,224.0	1,712.4	159.1	1,717.3	0.00	0.00	0.00

Bill Barrett Corp

Planning Report

Database:	Compass	Local Co-ordinate Reference:	Well Greasewood 04-08H
Company:	BILL BARRETT CORP	TVD Reference:	KB @ 4710.0ft (Original Well Elev)
Project:	WELD COUNTY, COLORADO	MD Reference:	KB @ 4710.0ft (Original Well Elev)
Site:	Greasewood 04-08H	North Reference:	True
Well:	Greasewood 04-08H	Survey Calculation Method:	Minimum Curvature
Wellbore:	Greasewood 04-08H		
Design:	Design #4		

Planned Survey										
Measured Depth (ft)	Inclination (°)	Azimuth (°)	Vertical Depth (ft)	+N/-S (ft)	+E/-W (ft)	Vertical Section (ft)	Dogleg Rate (°/100ft)	Build Rate (°/100ft)	Turn Rate (°/100ft)	
8,400.0	90.00	0.00	6,224.0	1,812.4	159.1	1,817.2	0.00	0.00	0.00	
8,500.0	90.00	0.00	6,224.0	1,912.4	159.1	1,917.1	0.00	0.00	0.00	
8,600.0	90.00	0.00	6,224.0	2,012.4	159.1	2,017.1	0.00	0.00	0.00	
8,700.0	90.00	0.00	6,224.0	2,112.4	159.1	2,117.0	0.00	0.00	0.00	
8,800.0	90.00	0.00	6,224.0	2,212.4	159.1	2,216.9	0.00	0.00	0.00	
8,900.0	90.00	0.00	6,224.0	2,312.4	159.1	2,316.8	0.00	0.00	0.00	
9,000.0	90.00	0.00	6,224.0	2,412.4	159.1	2,416.8	0.00	0.00	0.00	
9,100.0	90.00	0.00	6,224.0	2,512.4	159.1	2,516.7	0.00	0.00	0.00	
9,200.0	90.00	0.00	6,224.0	2,612.4	159.1	2,616.6	0.00	0.00	0.00	
9,300.0	90.00	0.00	6,224.0	2,712.4	159.1	2,716.5	0.00	0.00	0.00	
9,400.0	90.00	0.00	6,224.0	2,812.4	159.1	2,816.5	0.00	0.00	0.00	
9,500.0	90.00	0.00	6,224.0	2,912.4	159.1	2,916.4	0.00	0.00	0.00	
9,600.0	90.00	0.00	6,224.0	3,012.4	159.1	3,016.3	0.00	0.00	0.00	
9,700.0	90.00	0.00	6,224.0	3,112.4	159.1	3,116.2	0.00	0.00	0.00	
9,800.0	90.00	0.00	6,224.0	3,212.4	159.1	3,216.1	0.00	0.00	0.00	
9,900.0	90.00	0.00	6,224.0	3,312.4	159.1	3,316.1	0.00	0.00	0.00	
10,000.0	90.00	0.00	6,224.0	3,412.4	159.1	3,416.0	0.00	0.00	0.00	
10,100.0	90.00	0.00	6,224.0	3,512.4	159.1	3,515.9	0.00	0.00	0.00	
10,200.0	90.00	0.00	6,224.0	3,612.4	159.1	3,615.8	0.00	0.00	0.00	
10,300.0	90.00	0.00	6,224.0	3,712.4	159.1	3,715.8	0.00	0.00	0.00	
10,400.0	90.00	0.00	6,224.0	3,812.4	159.1	3,815.7	0.00	0.00	0.00	
10,500.0	90.00	0.00	6,224.0	3,912.4	159.1	3,915.6	0.00	0.00	0.00	
10,600.0	90.00	0.00	6,224.0	4,012.4	159.1	4,015.5	0.00	0.00	0.00	
10,629.2	90.00	0.00	6,224.0	4,041.6	159.1	4,044.7	0.00	0.00	0.00	
Greasewood 04-08H PBHL										

Casing Points					
Measured Depth (ft)	Vertical Depth (ft)	Name	Casing Diameter (")	Hole Diameter (")	
6,629.2	6,224.0	7" Csg	7	8-3/4	

Formations						
Measured Depth (ft)	Vertical Depth (ft)	Name	Lithology	Dip (°)	Dip Direction (°)	
301.0	301.0	Pierre (Fox Hills Base)		0.00	0.00	
3,285.5	3,261.0	Parkman		0.00	0.00	
4,106.5	4,074.0	Terry/Sussex		0.00	0.00	
4,658.9	4,621.0	Shannon		0.00	0.00	
6,133.4	6,051.0	Sharon Springs		0.00	0.00	
6,208.2	6,101.0	Niobrara		0.00	0.00	
6,459.4	6,209.0	Top "B2" Target		0.00	0.00	
	6,234.0	Base "B2" Target		0.00	0.00	