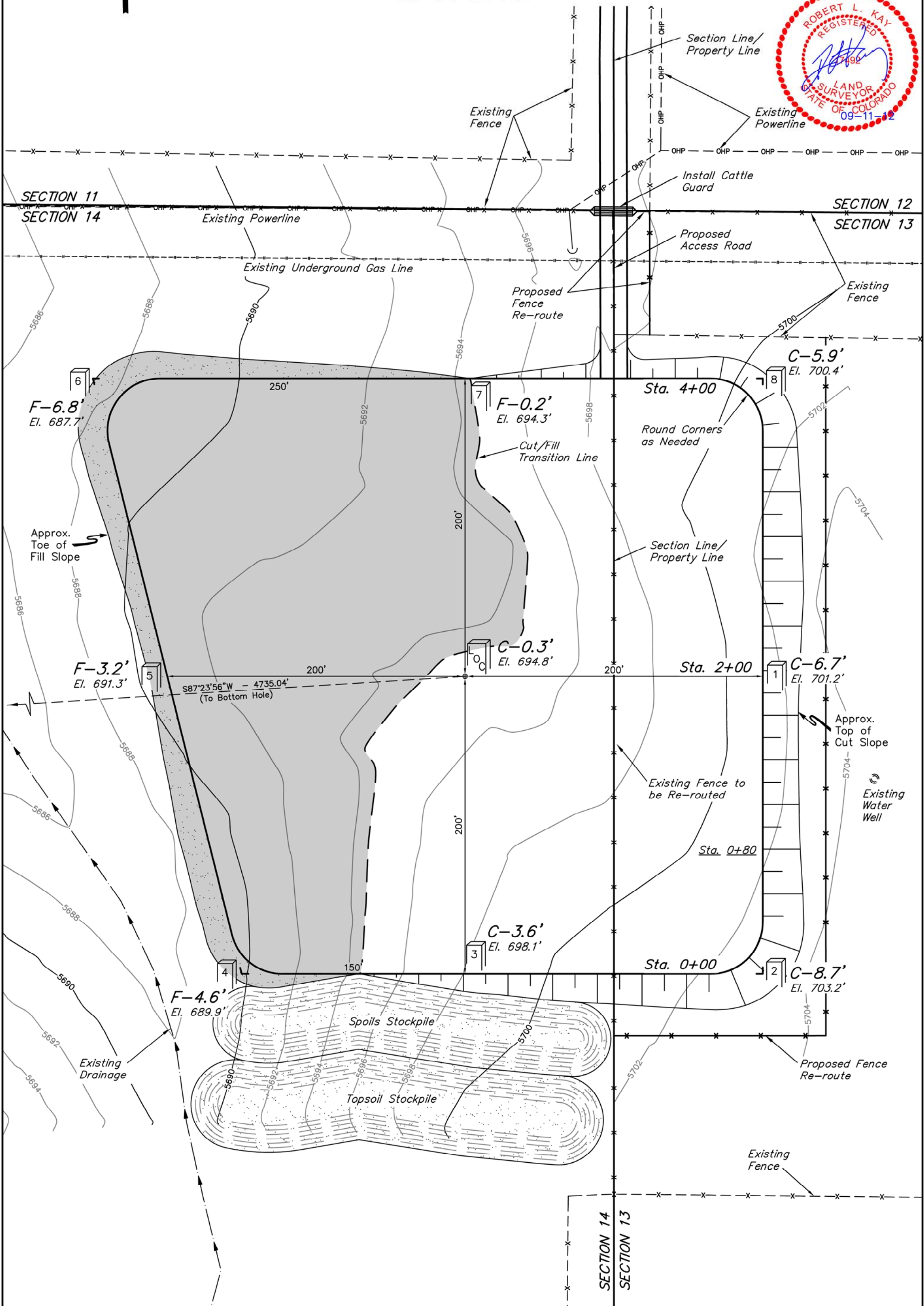


ConocoPhillips Company
CONSTRUCTION LAYOUT FOR
KROUT #14-1H
SECTION 14, T4S, R64W, 6th P.M.
314' FNL 100' FEL

FIGURE #1

SCALE: 1" = 60'
DATE: 07-20-12
DRAWN BY: J.W.
REVISED: 09-05-12
REVISED: 09-11-12



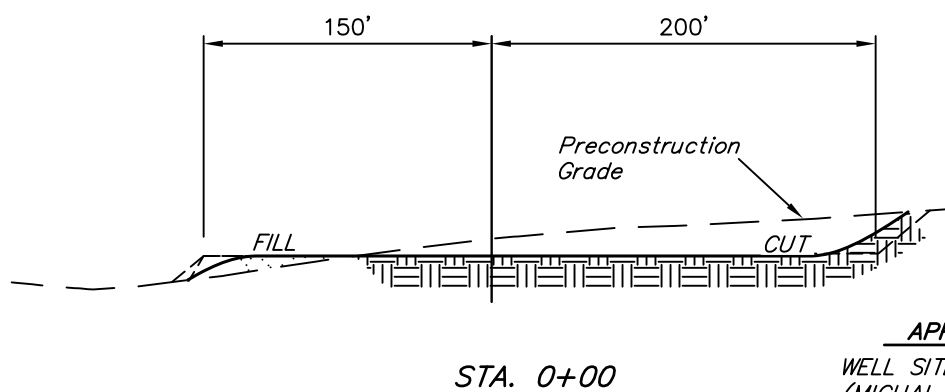
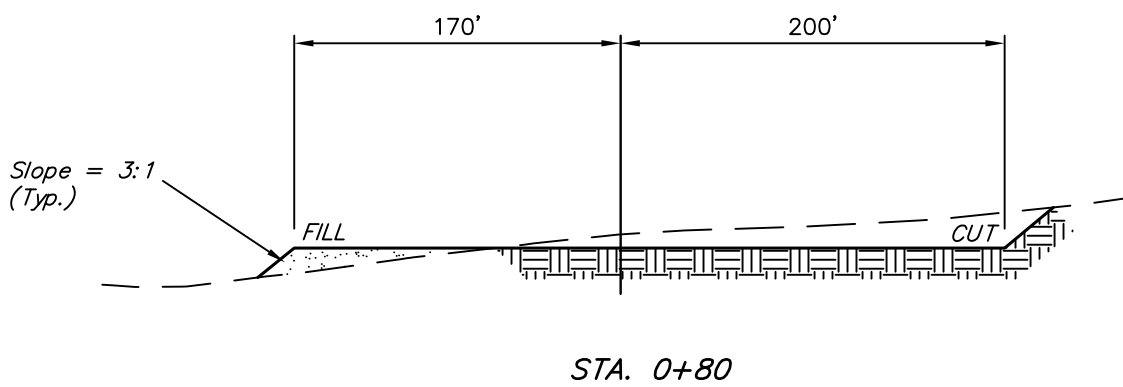
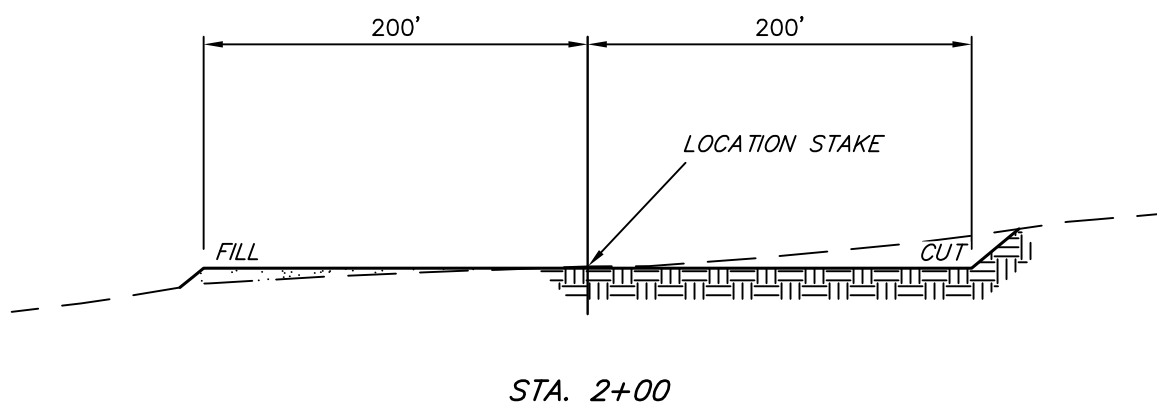
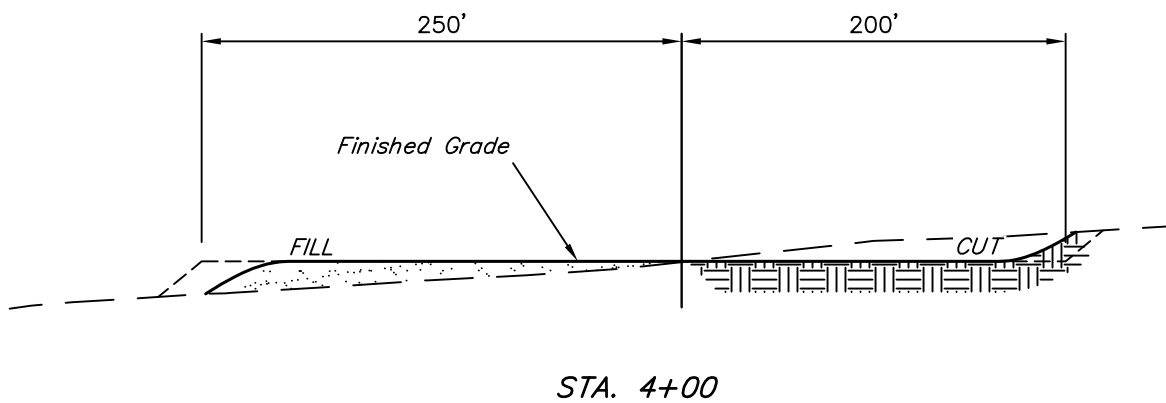
Elev. Ungraded Ground At Loc. Stake = 5694.8'
FINISHED GRADE ELEV. AT LOC. STAKE = 5694.5'

UINTAH ENGINEERING & LAND SURVEYING
85 So. 200 East * Vernal, Utah 84078 * (435) 789-1017

1" = 40'
X-Section
Scale
1" = 100'
DATE: 07-20-12
DRAWN BY: J.W.
REVISED: 09-05-12

ConocoPhillips Company
CONSTRUCTION LAYOUT CROSS SECTIONS FOR
KROUT #14-1H
SECTION 14, T4S, R64W, 6th P.M.
314' FNL 100' FEL

FIGURE #2



NOTE:
Topsoil should not be
Stripped Below Finished
Grade on Substructure Area.

* NOTE:
FILL QUANTITY INCLUDES
5% FOR COMPACTION

APPROXIMATE YARDAGES

(6") Topsoil Stripping = 3,440 Cu. Yds.
Remaining Location = 11,950 Cu. Yds.
TOTAL CUT = 15,390 CU. YDS.
FILL = 8,980 CU. YDS.

EXCESS MATERIAL = 6,410 Cu. Yds.
Topsoil = 3,440 Cu. Yds.
EXCESS UNBALANCE = 2,970 Cu. Yds.
(After Interim Rehabilitation)

APPROXIMATE ACREAGES

WELL SITE DISTURBANCE = ± 3.695 ACRES
(MICHAL LIVING TRUST)
WELL SITE DISTURBANCE = ± 1.226 ACRES
(KENNETH P. & LIDIA A. BRAY)
ACCESS ROAD DISTURBANCE = ± 0.039 ACRES
(MICHAL LIVING TRUST)
ACCESS ROAD DISTURBANCE = ± 0.039 ACRES
(KENNETH P. & LIDIA A. BRAY)
ACCESS ROAD DISTURBANCE = ± 0.259 ACRES
(CARL D. YOUNGBERG)
ACCESS ROAD DISTURBANCE = ± 0.648 ACRES
(BARBER VENTURES LLC)
ACCESS ROAD DISTURBANCE = ± 0.901 ACRES
(ALAN S. & KATHINA DOUGLAS)
ACCESS ROAD DISTURBANCE = ± 0.686 ACRES
(FREDERICK HERR)

TOTAL = ± 7.493 ACRES

UINTAH ENGINEERING & LAND SURVEYING
85 So. 200 East * Vernal, Utah 84078 * (435) 789-1017