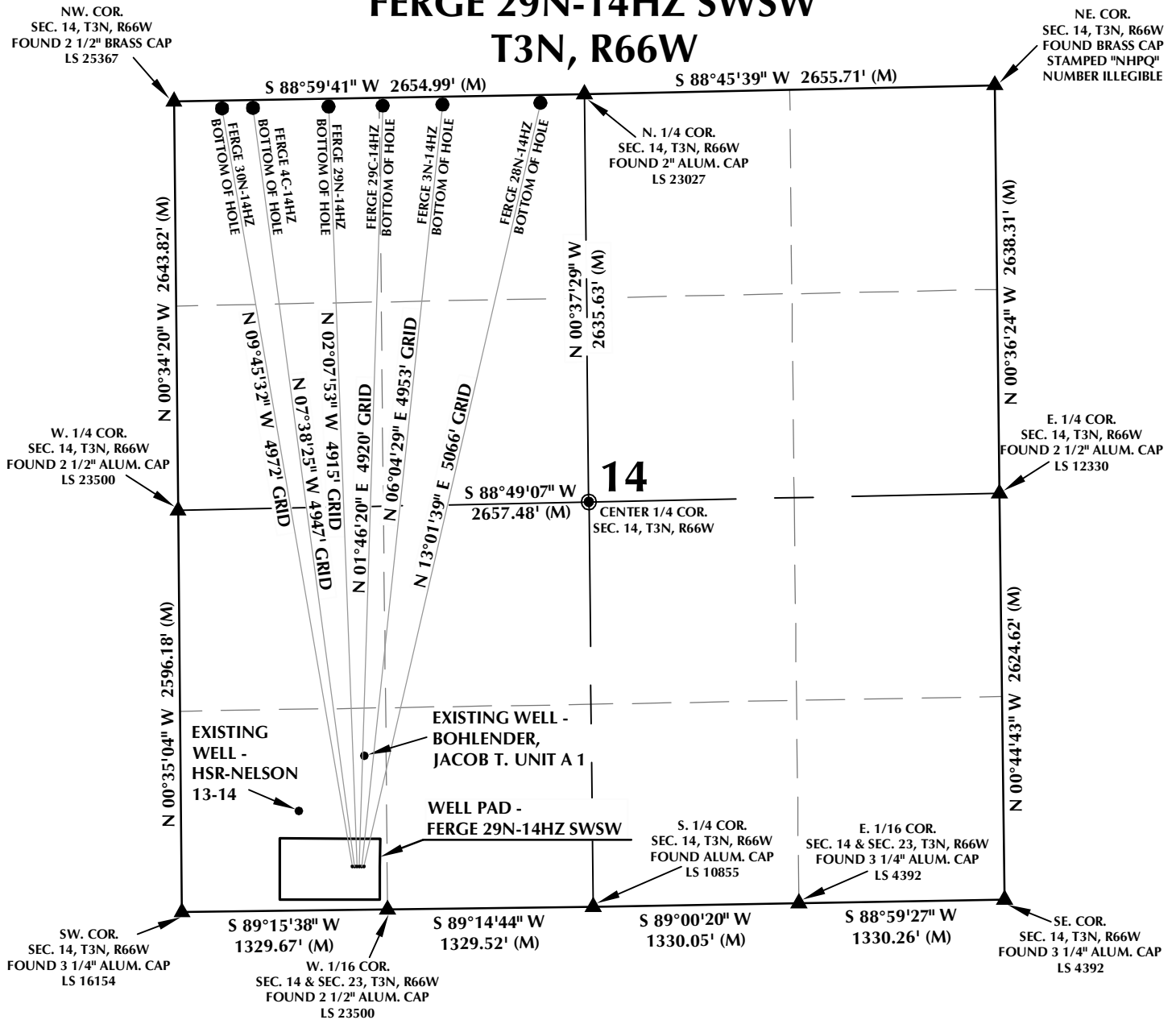


# FERGE 29N-14HZ SWSW T3N, R66W



## WELL NOTES:

FERGE 30N-14HZ  
SURFACE: 281' FSL, 1103' FWL  
BOTTOM HOLE: 50' FNL, 310' FWL

FERGE 4C-14HZ  
SURFACE: 281' FSL, 1118' FWL  
BOTTOM HOLE: 50' FNL, 510' FWL

FERGE 29N-14HZ  
SURFACE: 281' FSL, 1133' FWL  
BOTTOM HOLE: 50' FNL, 1000' FWL

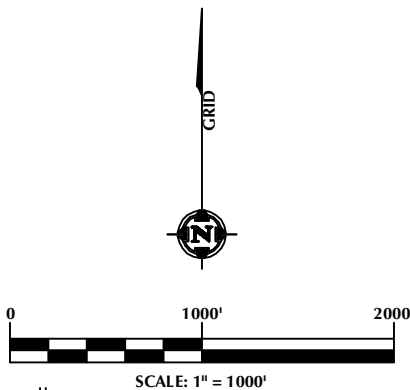
FERGE 29C-14HZ  
SURFACE: 281' FSL, 1148' FWL  
BOTTOM HOLE: 50' FNL, 1350' FWL

FERGE 3N-14HZ  
SURFACE: 280' FSL, 1163' FWL  
BOTTOM HOLE: 50' FNL, 1737' FWL

FERGE 28N-14HZ  
SURFACE: 280' FSL, 1178' FWL  
BOTTOM HOLE: 50' FNL, 2370' FWL

## NOTES:

- ▲ INDICATES FOUND SECTION CORNER
- INDICATES CALCULATED CORNER
- BASIS OF BEARING DERIVED FROM COLORADO COORDINATE SYSTEM 1983 NORTH ZONE UNLESS OTHERWISE NOTED.
- ALL MEASURED DISTANCES ARE GRID.
- COMBINED SCALE FACTOR: .99972607
- WELL FOOTAGES ARE MEASURED AT RIGHT ANGLES TO THE SECTION LINES.



## WELL PAD - FERGE 29N-14HZ SWSW

INTERFERENCE DIAGRAM  
FERGE 30N-14HZ, FERGE 4C-14HZ,  
FERGE 29N-14HZ, FERGE 29C-14HZ,  
FERGE 3N-14HZ & FERGE 28N-14HZ  
LOCATED IN SECTION 14  
T3N, R66W, 6TH P.M.  
WELD COUNTY, COLORADO

**Kerr-McGee Oil &  
Gas Onshore L.P.**  
1099 18th Street  
Denver, Colorado 80202



## CONSULTING, LLC

2155 North Main Street  
Sheridan, Wyoming 82801  
Phone 307-674-0609  
Fax 307-674-0182

DRAFTED BY:	APF	CHECKED BY:	BJR
DATE DRAFTED:	4/18/12	DATE SURVEYED:	3/15/12
REVISED:	9/4/12	FILE NAME:	12-22