

Lat40°, Inc. 1635 Foxtrail Drive, Suite 325 Loveland, CO 970-776-3321

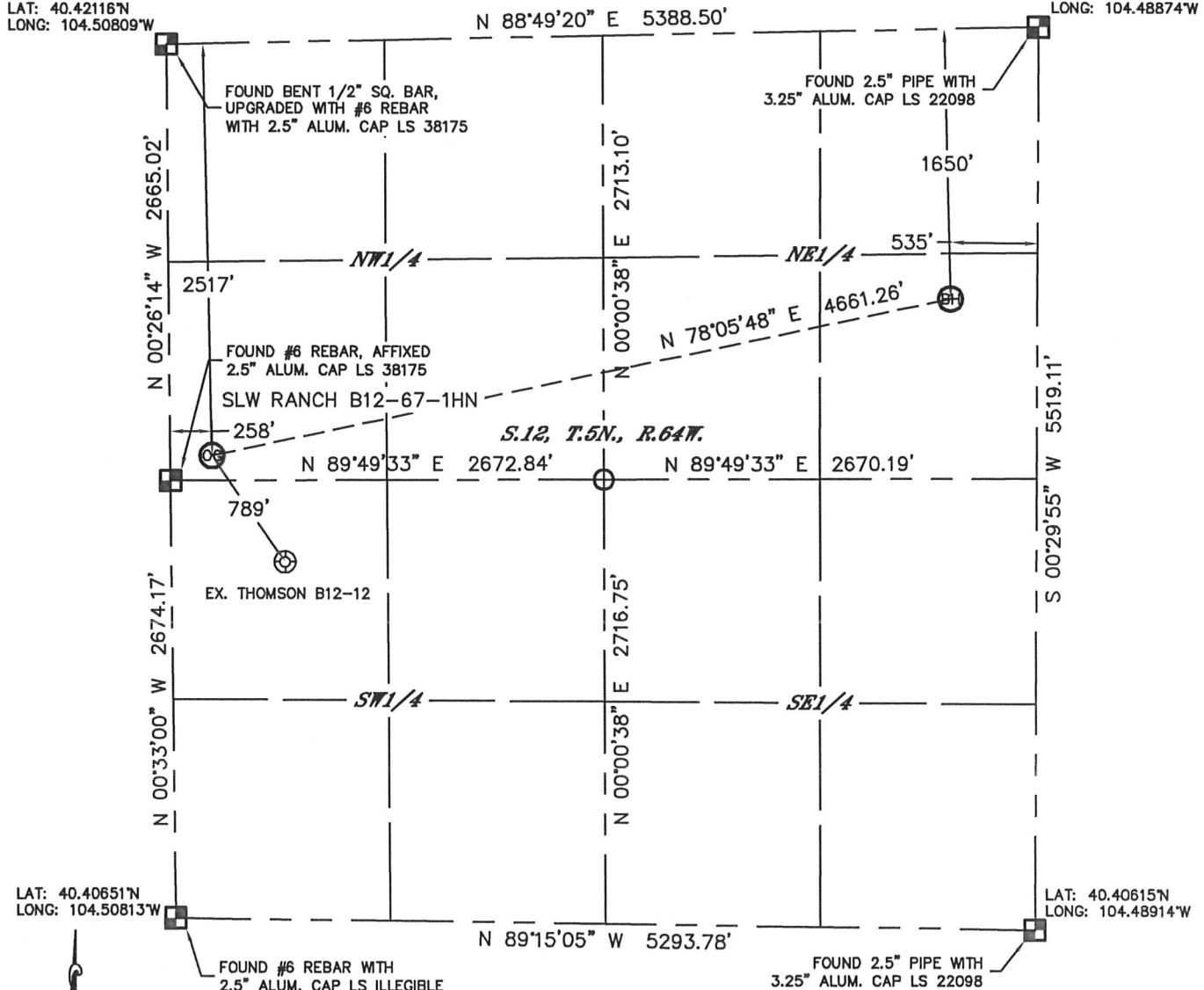
# WELL LOCATION CERTIFICATE

THIS MAP DOES NOT REPRESENT A BOUNDARY SURVEY

SECTION: 12  
TOWNSHIP: 5N  
RANGE: 64W

LAT: 40.42116°N  
LONG: 104.50809°W

LAT: 40.42130°N  
LONG: 104.48874°W



In accordance with a request from Mike Rodine with Noble Energy Inc., Lat40°, Inc. has determined the surface location of the SLW RANCH B12-67-1HN to be 2517' from the NORTH line and 258' from the WEST line and the bottom hole to be 1650' from the NORTH line and 535' from the EAST line as measured at right angles from the section lines of Section 12, Township 5 North, Range 64 West of the Sixth Principal Meridian, County of Weld, State of Colorado.

I hereby state that this Well Location Certificate was prepared by me, or under my direct supervision, that the fieldwork was completed on 5/11/2012, for and on behalf of Noble Energy Inc. That this is not a Land Survey Plat or an Improvement Survey Plat, and that it is not to be relied upon for establishment of fence, building, or other future Improvement lines.

## NOTE:

- 1) Bearings shown are Grid Bearings of the Colorado State Plane Coordinate System, North Zone, North American Datum 1983/2007. The lineal dimensions as contained herein are based upon the "U.S. Survey Foot."
- 2) Ground elevations are based on an observed GPS elevation (NAVD 1988 DATUM).
- 3) NEAREST EXISTING WELL: THOMSON B12-12, 789'
- 4) IMPROVEMENTS: See LOCATION DRAWING for all visible Improvements within 400' of disturbed area.
- 5) SURFACE USE: CROP LAND
- 6) INSTRUMENT OPERATOR: BRIAN ROTTINGHAUS

## SURFACE LOCATION

LAT: 40.41426°N  
LONG: 104.50719°W  
PDOP: 1.8  
ELEV: 4603'  
1/4, 1/4: SW1/4NW1/4  
NEAREST PROPERTY LINE: 258' WEST

## BOTTOM HOLE

LAT: 40.41675°N  
LONG: 104.49078°W

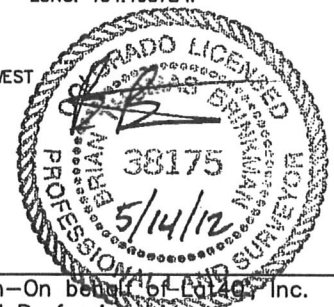
## NOTE

According to Colorado law, you must commence any legal action based upon any defect in this W.L.C. within three years after you discover such defect. In no event, may any action based upon any defect in this survey be commenced more than ten years after the date of the certificate shown hereon. (13-80-105 C.R.S.)

## LEGEND

- = ALIQUOT MONUMENT AS DESCRIBED
- = CALCULATED POSITION

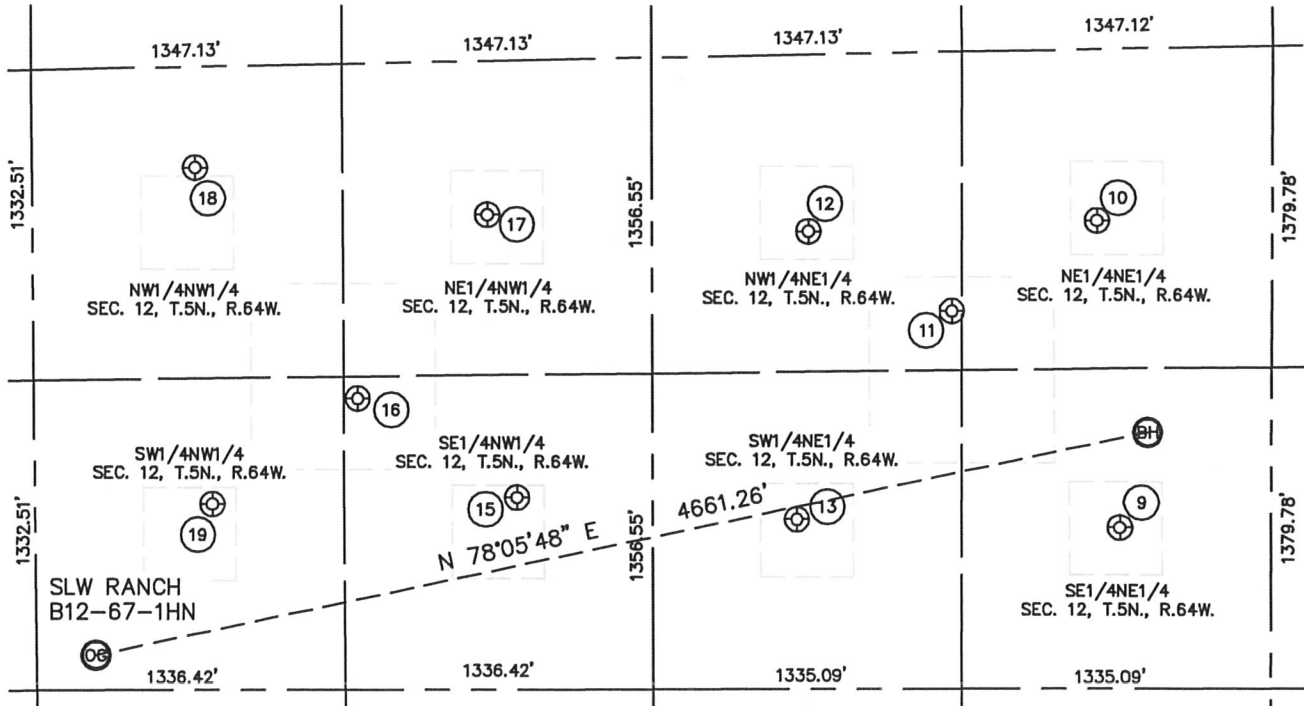
Brian T. Brinkman—On behalf of Lat40°, Inc.  
Colorado Licensed Professional Land Surveyor No. 38175  
DATE: rev 5/14/2012  
PROJECT#: 2012029



# SITE SKETCH

SLW RANCH B12-67-1HN

SECTION: 12  
TOWNSHIP: 5N  
RANGE: 64W



9

TREBOR B12-8  
SE1/4NE1/4  
2056' FNL  
652' FEL  
LAT-40.41564°N  
LONG-104.49123°W  
PDOP: 1.3  
ELEV: 4623'

10

TREBOR B12-1  
NE1/4NE1/4  
737' FNL  
757' FEL  
LAT-40.41926°N  
LONG-104.49151°W  
PDOP: 1.4  
ELEV: 4632'

11

TREBOR B12-17  
NW1/4NE1/4  
1113' FNL  
1385' FEL  
LAT-40.41821°N  
LONG-104.49379°W  
PDOP: 1.1  
ELEV: 4625'

12

TREBOR B12-2  
NW1/4NE1/4  
759' FNL  
2009' FEL  
LAT-40.41916°N  
LONG-104.49601°W  
PDOP: 1.4  
ELEV: 4596'

13

TREBOR B12-7  
SW1/4NE1/4  
1993' FNL  
2053' FEL  
LAT-40.41578°N  
LONG-104.49625°W  
PDOP: 1.4  
ELEV: 4594'

15

TREBOR B12-6  
SE1/4NW1/4  
1877' FNL  
2090' FWL  
LAT-40.41606°N  
LONG-104.50061°W  
PDOP: 1.4  
ELEV: 4591'

16

TREBOR B12-19  
SE1/4NW1/4  
1438' FNL  
1402' FWL  
LAT-40.41725°N  
LONG-104.50307°W  
PDOP: 1.2  
ELEV: 4590'

17

TREBOR B12-3  
NE1/4NW1/4  
660' FNL  
1972' FWL  
LAT-40.41940°N  
LONG-104.50101°W  
PDOP: 1.5  
ELEV: 4602'

18

TREBOR B12-4  
NW1/4NW1/4  
432' FNL  
707' FWL  
LAT-40.41999°N  
LONG-104.50555°W  
PDOP: 1.7  
ELEV: 4606'

19

TREBOR B12-5  
SW1/4NW1/4  
1878' FNL  
769' FWL  
LAT-40.41603°N  
LONG-104.50535°W  
PDOP: 1.3  
ELEV: 4592'

