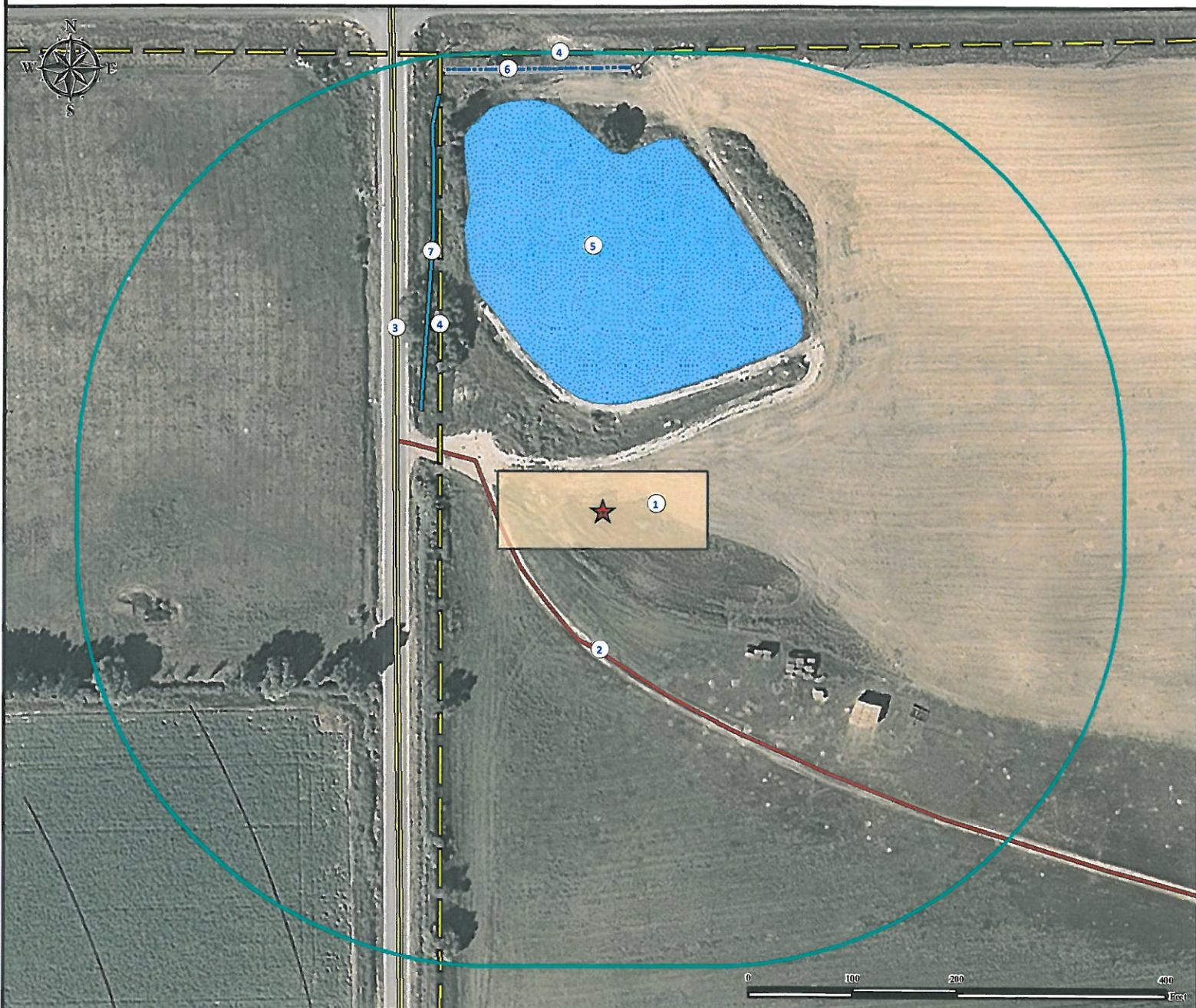


Location Drawing

MLD 22NW FACILITY

NW¼ NW¼ SECTION 22, TOWNSHIP 4 NORTH, RANGE 68 WEST OF THE 6TH PRINCIPAL MERIDIAN



- | | | |
|--------------------------------|---|------------------------------|
| 1. Proposed MLD 22NW Facility. | 4. Power Lines are ±155' W and ±438' N. | 4. Runoff Ditch is ±197' NW. |
| 2. Private Road is ±94' SW. | 5. Irrigation Pond is ±102' N. Feature was dry at time of field work. | |
| 3. County Road 7 is ±197' W. | 6. Concrete Ditch is ±423' N. | |

Legend

- | | | |
|---------------------|-------------------|------------------|
| ★ Reference Point | ■ Irrigation Pond | — Ditch |
| ■ Proposed Facility | — Public Road | — Power Line |
| □ 400' Radius | — Private Road | — Concrete Ditch |

Reference Location

** All Measurements are Made from Reference Point ★ **
 Lat: 40.304720° Long: -104.998126° (NAD83)
 Elevation: 4894 Feet
 199' FWL 524' FNL



Use our resources to find yours!
www.petro-fs.com
 (303) 928-7128

Field Date: 10/08/2012
 Drafting Date: 10/10/2012
 Drafter: GWB
 Revision: 1

Surface Use: Dry Land Crop

Data Sources:
 - Aerial courtesy of NAIP (2009)

Prepared for:

