

HALLIBURTON

EAST CHEYENNE GAS STORAGE

**ECGS 6-16 WPD009-2
PEETZ WEST
Logan County , Colorado**

Cement Production Casing
24-Sep-2012

Job Site Documents

HALLIBURTON

Work Order Contract

Order Number

9836696

TO: HALLIBURTON ENERGY SERVICES, INC. - YOU ARE HEREBY REQUESTED TO FURNISH EQUIPMENT AND SERVICE PERSONNEL TO DELIVER AND OPERATE THE SAME AS AN INDEPENDENT CONTRACTOR TO CUSTOMER LISTED BELOW AND DELIVER AND SELL PRODUCTS, SUPPLIES AND MATERIALS FOR THE PURPOSE OF SERVICING:

Well No. 6-16 WPD009-2	Farm or Lease ECGS	County Logan	State Colorado	Well Permit Number 05-075-09402
Customer EAST CHEYENNE GAS STORAGE	Well Owner		Job Purpose Cement Production Casing	

THIS WORK ORDER MUST BE SIGNED BEFORE WORK IS COMMENCED

A. CUSTOMER REPRESENTATION - Customer warrants that the well is in proper condition to receive the services, equipment, products, and materials to be supplied by Halliburton Energy Services, Inc. (hereinafter "Halliburton").

B. PRICE AND PAYMENT - The services, equipment, products, and/or materials to be supplied hereunder are priced in accordance with Halliburton's current price list. All prices of Halliburton are exclusive of any federal, state or municipal taxes which may be imposed on the sale or use of any materials, products or supplies furnished or services performed. Customer agrees to pay such taxes in addition to the prices in Halliburton's price list. If Customer does not have an approved open account with Halliburton, all sums due are payable in cash at the time of performance of services or delivery of equipment, products or materials. If Customer has an approved open account, invoices are payable on the twentieth day after the date of invoice. Customer agrees to pay interest on any unpaid balance from the date payable until paid at the highest lawful contract rate applicable, but never to exceed 18% per annum. In the event Halliburton employs an attorney for collection of any account, Customer agrees to pay attorney fees of 20% of the unpaid account, or Halliburton's actual attorney fees, whichever is greater, plus all collection and court costs. Customer agrees that the amount of attorney fees set out herein are reasonable and necessary.

C. RELEASE AND INDEMNITY - Customer agrees to RELEASE Halliburton Group from any and all liability for any and all damages whatsoever to property of any kind owned by, in the possession of, or leased by Customer and those persons and entities Customer has the ability to bind by contract or which are co-interest owners or joint ventures with Customer. Customer also agrees to DEFEND, INDEMNIFY, AND HOLD Halliburton Group HARMLESS from and against any and all liability, claims, costs, expenses, attorney fees and damages whatsoever for personal injury, illness, death, property damage and loss resulting from loss of well control; services to control a wild well whether underground or above the surface; reservoir or underground damage, including loss of oil, gas, other mineral substances or water; surface damage arising from underground damage; damage to or loss of the well bore, subsurface trespass or any action in the nature thereof, fire, explosion, subsurface pressure, radioactivity, and pollution and contamination and its cleanup and control.

CUSTOMER'S RELEASE, DEFENSE, INDEMNITY AND HOLD HARMLESS obligations will apply even if the liability and claims are caused by the sole, concurrent, active or passive negligence, fault, or strict liability of one or more members of the Halliburton Group, the unseaworthiness of any vessel or any defect in the data, products, supplies, materials or equipment furnished by any member or members of the Halliburton Group whether in the design, manufacture, maintenance or marketing thereof or from a failure to warn of such defect. "Halliburton Group" is defined as Halliburton Energy Services, Inc., its parent, subsidiary, and affiliated companies, insurers and subcontractors and all its/their officers, directors, employees, consultants and agents. CUSTOMER'S RELEASE, DEFENSE, INDEMNITY AND HOLD HARMLESS obligations apply whether the personal injury, illness, death, property damage or loss is suffered by one or more members of the Halliburton Group, Customer, or any other person or entity. Customer agrees to support such obligations assumed herein with liability insurance with limits of not less than \$500,000. Customer agrees to name Halliburton Group as named additional insured on all of its general liability policy(s). Customer agrees that its liability under this Contract is not limited by the amounts of its insurance coverage, except where and as may be required by applicable local law for the provisions of this Contract to be enforceable.

D. EQUIPMENT LIABILITY - Customer shall at its risk and expense attempt to recover any Halliburton Group equipment lost or lodged in the well. If the equipment is recovered and repairable, Customer shall pay the repair costs, unless caused by Halliburton's sole negligence. If the equipment is not recovered or is irreparable, Customer shall pay the current published replacement rate, unless caused by Halliburton's sole negligence. If a radioactive source becomes lost or lodged in the well, Customer shall meet all requirements of Section 39.15(a) of the Nuclear Regulatory Commission regulations and any other applicable laws or regulations concerning retrieval or abandonment and shall permit Halliburton to monitor the recovery or abandonment efforts all at no risk or liability to Halliburton Group. Customer shall be responsible for damage to or loss of Halliburton group equipment, products, and materials while in transit aboard Customer-supplied transportation, even if such is arranged by Halliburton at Customer's request, and during loading and unloading from such transport. Customer will also pay for the repair or replacement of Halliburton group equipment damaged by corrosion or abrasion due to well effluents.

E. LIMITED WARRANTY - Halliburton warrants only title to the equipment, products, and materials supplied under this Contract and that same are free from defects in workmanship and materials for thirty (30) days from the date of delivery. **THERE ARE NO WARRANTIES, EXPRESS OR IMPLIED, OF MERCHANTABILITY, FITNESS OR OTHERWISE BEYOND THOSE STATED IN THE IMMEDIATELY PRECEDING SENTENCE.** Halliburton's sole liability and Customer's exclusive remedy in any cause of action (whether in contract, tort, breach of warranty or otherwise) arising out of the sale, lease or use of any equipment, products, or materials is expressly limited to the replacement of such on their return to Halliburton or, at Halliburton's option, to the allowance to Customer of credit for the cost of such items. In no event shall Halliburton be liable for special, incidental, indirect, consequential, or punitive damages. Because of the uncertainty of variable well conditions and the necessity of relying on facts and supporting services furnished by others, **HALLIBURTON IS UNABLE TO GUARANTEE THE EFFECTIVENESS OF THE EQUIPMENT, MATERIALS, OR SERVICE, NOR THE ACCURACY OF ANY CHART INTERPRETATION, RESEARCH ANALYSIS, JOB RECOMMENDATION OR OTHER DATA FURNISHED BY HALLIBURTON GROUP.** Halliburton personnel will use their best efforts in gathering such information and their best judgment in interpreting it, but Customer agrees that Halliburton Group shall not be liable for and **CUSTOMER SHALL INDEMNIFY HALLIBURTON GROUP AGAINST ANY DAMAGES ARISING FROM THE USE OF SUCH INFORMATION, even if such is contributed to or caused by the active or passive negligence, fault or strict liability of any member or members of Halliburton Group.** Halliburton also does not warrant the accuracy of data transmitted by electronic process, and Halliburton will not be responsible for accidental or intentional interception of such data by third parties.

F. GOVERNING LAW - The validity, interpretation and construction of this Contract shall be determined by the laws of the jurisdiction where the services are performed or the equipment or materials are delivered.

G. DISPUTE RESOLUTION Except for Halliburton's statutory rights with regard to collection of past due invoices for services or materials, including the Contractor's statutory rights for perfection and enforcement of mechanics' and materialmen's liens, Customer and Halliburton agree that any dispute that may arise out of the performance of this Contract shall be resolved by binding arbitration by a panel of three arbitrators under the rules or the American Arbitration Association. The arbitration will take place in Houston, TX.

H. SEVERABILITY - If any provision or part thereof of this Contract shall be held to be invalid, void, or of no effect for any reason, such holding shall not be deemed to affect the validity of the remaining provisions of this Contract which can be given effect, without the invalid provision or part thereof, and to this end, the provisions of this Contract are declared to be severable. Customer and Halliburton agree that any provision of this Contract that is unenforceable or void under applicable law will be modified to achieve the intent of the parties hereunder to the greatest extent allowed by applicable law.

I. MODIFICATIONS - Customer agrees that Halliburton shall not be bound by any modifications to this Contract, except where such modification is made in writing by a duly authorized executive officer of Halliburton. Requests for modifications should be directed to the Vice President - Legal, 10200 Bellaire Blvd, Houston, TX 77072-5299.

I HAVE READ AND UNDERSTAND THIS WORK ORDER CONTRACT WHICH CONTAINS RELEASE AND INDEMNITY LANGUAGE WHICH CUSTOMER ACKNOWLEDGES IS CONSPICUOUS AND AFFORDS FAIR AND ADEQUATE NOTICE AND I REPRESENT THAT I AM AUTHORIZED TO SIGN THE SAME AS CUSTOMER'S AGENT. I AM SIGNING THIS WORK ORDER CONTRACT WITH THE UNDERSTANDING THAT ITS TERMS AND CONDITIONS WILL NOT APPLY TO THE EXTENT THEY CONFLICT WITH TERMS AND CONDITIONS OF A SIGNED MASTER SERVICE CONTRACT BETWEEN THE PARTIES.

Customer Acceptance of Terms and Conditions, Materials and Services

CUSTOMER Authorized Signatory

Date

HALLIBURTON

Field Ticket

Field Ticket Number: 9836696		Field Ticket Date: Monday, September 24, 2012	
Bill To: EAST CHEYENNE GAS STORAGE 10901 WEST TOLLER DR SUITE 200 LITTLETON, CO 80127		Job Name: ECGS 6-16 WPD009-2 Order Type: Streamline Order (ZOH) Well Name: ECGS 6-16 WPD009-2 Company Code: 1100 Customer PO No.: NA Shipping Point: Brighton, CO, USA Sales Office: Rocky Mountains BD Well Type: Gas Well Category: Development	
Ship To: EAST CHEYE ECGS 6-16 WPD009-2, LOGAN ECGS 6-16 WPD009-2 2953222 S6 T11N R52W PEETZ, CO 80747			

Material	Description	QTY	UOM	Base Amt	Unit Amt	Gross Amount	Discount	Net Amount
7523	CMT PRODUCTION CASING BOM	1	JOB	0.00	0.00	0.00		0.00
2	MILEAGE FOR CEMENTING CREW,ZI	290	MI	0.00	5.76	3,340.80	64%	1,202.69
	Number of Units	2						
1	ZI-MILEAGE FROM NEAREST HES BASE,/UNIT	290	MI	0.00	9.79	2,839.10	64%	1,022.08
	Number of Units	1						
16091	ZI - PUMPING CHARGE	1	EA	0.00	7,297.00	7,297.00	64%	2,626.92
	DEPTH	5260						
	FEET/METERS (FT/M)		FT					
121	MSC OPERATOR W/HES PUMP EQUIP./DAY, ZI	1	EA	0.00	1,548.00	1,548.00	64%	557.28
	NUMBER OF DAYS	1						
76400	ZI MILEAGE,CMT MTLs DEL/RET MIN	145	MI	0.00	3.35	3,152.52	64%	1,134.91
	NUMBER OF TONS	6.49						
3965	HANDLE&DUMP SVC CHRg, CMT&ADDITIVES,ZI	184	CF	0.00	5.49	1,010.16	64%	363.66
	NUMBER OF EACH	1						
86954	ZI FUEL SURCHG-CARS/PICKUPS<1 1/2TON	290	MI	0.00	0.17	98.60		98.60
	Number of Units	2						
86955	ZI FUEL SURCHG-HEAVY TRKS >1 1/2 TON	290	MI	0.00	0.51	147.90		147.90
	Number of Units	1						
87605	ZI FUEL SURCHG-CMT & CMT ADDITIVES	145	MI	0.00	0.17	159.98		159.98
	NUMBER OF TONS	6.49						
7	ENVIRONMENTAL CHARGE,/JOB,ZI	1	JOB	0.00	134.00	134.00		134.00
8	IRON SAFETY INSPECTION SURCHARGE /JOB ZI	1	JOB	0.00	83.00	83.00		83.00

Field Ticket

Field Ticket Number: 9836696		Field Ticket Date: Monday, September 24, 2012	
Bill To: EAST CHEYENNE GAS STORAGE 10901 WEST TOLLER DR SUITE 200 LITTLETON, CO 80127		Job Name: ECGS 6-16 WPD009-2 Order Type: Streamline Order (ZOH) Well Name: ECGS 6-16 WPD009-2 Company Code: 1100 Customer PO No.: NA Shipping Point: Brighton, CO, USA Sales Office: Rocky Mountains BD Well Type: Gas Well Category: Development	
Ship To: EAST CHEYE ECGS 6-16 WPD009-2, LOGAN ECGS 6-16 WPD009-2 2953222 S6 T11N R52W PEETZ, CO 80747			

Material	Description	QTY	UOM	Base Amt	Unit Amt	Gross Amount	Discount	Net Amount
372867	Cmt PSL - DOT Vehicle Charge, CMT	2	EA	0.00	241.00	482.00		482.00
45	CMT, S.O.T./S.M.M. PERMIT	1	EA	0.00	200.00	200.00		200.00
139	ADC (AUTO DENSITY CTRL) SYS, /JOB,ZI NUMBER OF UNITS	1 1	JOB	0.00	2,275.00	2,275.00	64%	819.00
132	PORT. DAS W/CEMWIN;ACQUIRE W/HES, ZI NUMBER OF DAYS	1 1	JOB	0.00	1,649.00	1,649.00	64%	593.64
114	R/A DENSOMETER W/CHART RECORDER,/JOB,ZI NUMBER OF UNITS	1 1	JOB	0.00	1,285.00	1,285.00	64%	462.60
74038	ZI PLUG CONTAINER RENTAL-1ST DAY DAYS OR FRACTION (MIN1)	1 1	EA	1,322.00	0.00	1,322.00	64%	475.92
90	ZI QUICK LATCH ATTACHMENT SIZE IN INCHES/MILLIMETER INCHES/MILLIMETERS (IN/MM)	1 7	JOB IN	0.00	491.00	491.00	64%	176.76
528788	MUD FLUSH III	24	BBL	0.00	90.72	2,177.28	64%	783.82
452981	EXTENDACEM (TM) SYSTEM	60	SK			3,939.00	64%	1,418.04
452979	EXPANDACEM (TM) SYSTEM	70	SK			6,631.49	64%	2,387.34
101382962	BE-3S	6	LB	0.00	333.35	2,000.10	64%	720.04
100004901	SHOE,FLT,7 8RD,P-110/Q-125,2-3/4	1	EA	0.00	1,388.80	1,388.80	60%	555.52
100013992	CLR,FLT,7 LG 8RD 23-26PPF,2-3/4	1	EA	0.00	1,454.00	1,454.00	60%	581.60
101229888	PLUG,CMTG,TOP,7,HWE,5.66 MIN/6.54 MAX CS	1	EA	0.00	289.00	289.00	60%	115.60

HALLIBURTON

Field Ticket

Field Ticket Number: 9836696		Field Ticket Date: Monday, September 24, 2012	
Bill To: EAST CHEYENNE GAS STORAGE 10901 WEST TOLLER DR SUITE 200 LITTLETON, CO 80127		Job Name: ECGS 6-16 WPD009-2 Order Type: Streamline Order (ZOH) Well Name: ECGS 6-16 WPD009-2 Company Code: 1100 Customer PO No.: NA Shipping Point: Brighton, CO, USA Sales Office: Rocky Mountains BD Well Type: Gas Well Category: Development	
Ship To: EAST CHEYE ECGS 6-16 WPD009-2, LOGAN ECGS 6-16 WPD009-2 2953222 S6 T11N R52W PEETZ, CO 80747			

Material	Description	QTY	UOM	Base Amt	Unit Amt	Gross Amount	Discount	Net Amount
100005045	KIT,HALL WELD-A	1	EA	0.00	74.30	74.30	60%	29.72
100004479	CTRZR ASSY,API,7 CSG X 8 3/4HOLE,HNGD	15	EA	0.00	161.00	2,415.00	60%	966.00
101985045	CHEM, CLA-WEB - TOTE	10	GAL	0.00	474.30	4,743.00	60%	1,897.20
76400	ZI MILEAGE,CMT MTLS DEL/RET MIN	145	MI	0.00	3.35	456.61	60%	182.64
	NUMBER OF TONS	0.94						
				Totals	USD	53,083.64	32,705.18	20,378.46

Halliburton Rep: LARRY LAVALLEY
 Customer Agent: JOHN ASHBY
 Halliburton Approval

THIS OUTPUT DOES NOT INCLUDE TAXES. APPLICABLE SALES TAX WILL BE BILLED ON THE FINAL INVOICE.
 CUSTOMER HEREBY ACKNOWLEDGES RECEIPT OF THE MATERIALS AND SERVICES DESCRIBED ABOVE AND ON THE ATTACHED DOCUMENTS.

X _____ FIELD TICKET TOTAL: USD 20,378.46

Customer Signature

Was our HSE performance satisfactory? Y or N Were you satisfied with our Equipment? Y or N Were you satisfied with our people? Y or N
 (Health, Safety, Environment)

Comments

The Road to Excellence Starts with Safety

Sold To #: 361672	Ship To #: 2953222	Quote #:	Sales Order #: 9836696
Customer: EAST CHEYENNE GAS STORAGE	Customer Rep: ASHBY, JOHN		
Well Name: ECGS	Well #: 6-16 WPD009-2	API/UWI #: 05-075-09402	
Field: PEETZ WEST	City (SAP): PEETZ	County/Parish: Logan	State: Colorado
Lat: N 40.959 deg. OR N 40 deg. 57 min. 33.012 secs.	Long: W 103.221 deg. OR W -104 deg. 46 min. 44.472 secs.		
Contractor: CADE Drilling	Rig/Platform Name/Num: #22		
Job Purpose: Cement Production Casing			
Well Type: Development Well	Job Type: Cement Production Casing		
Sales Person: AARON, WESLEY	Srvc Supervisor: LAVALLEY, LARRY	MBU ID Emp #: 419296	

Job Personnel

HES Emp Name	Exp Hrs	Emp #	HES Emp Name	Exp Hrs	Emp #	HES Emp Name	Exp Hrs	Emp #
BANUELOS, GUADALUPE	7.5	372277	CARPENTER, JACOB P	7.5	499500	LAVALLEY, LARRY P	7.5	419296

Equipment

HES Unit #	Distance-1 way	HES Unit #	Distance-1 way	HES Unit #	Distance-1 way	HES Unit #	Distance-1 way
10248062C	145 mile	11488570C	145 mile	11518549	145 mile		

Job Hours

Date	On Location Hours	Operating Hours	Date	On Location Hours	Operating Hours	Date	On Location Hours	Operating Hours
9/24/12	7.5	1						

TOTAL	Total is the sum of each column separately							
-------	--------------------------------------------	--	--	--	--	--	--	--

Job

Job Times

Formation Name					Date	Time	Time Zone
Formation Depth (MD)	Top	Bottom			Called Out	23 - Sep - 2012 23:00	MST
Form Type	BHST				On Location	24 - Sep - 2012 04:00	MST
Job depth MD	5260. ft	Job Depth TVD	5260. ft		Job Started	24 - Sep - 2012 09:45	MST
Water Depth		Wk Ht Above Floor	6. ft		Job Completed	24 - Sep - 2012 10:50	MST
Perforation Depth (MD)	From	To			Departed Loc	24 - Sep - 2012 11:30	MST

Well Data

Description	New / Used	Max pressure psig	Size in	ID in	Weight lbm/ft	Thread	Grade	Top MD ft	Bottom MD ft	Top TVD ft	Bottom TVD ft
8 3/4" Open Hole				8.75				215.	5260.		
7" Production Casing	New		7.	6.276	26.			.	5246.		
Surface Casing	Unknown		9.625	9.184	22.5			.	215.		

Sales/Rental/3rd Party (HES)

Description	Qty	Qty uom	Depth	Supplier
BE-3S	6	LB		
SHOE,FLT,7 8RD,P-110/Q-125,2-3/4	1	EA		
CLR,FLT,7 LG 8RD 23-26PPF,2-3/4	1	EA		
PLUG,CMTG,TOP,7,HWE,5.66 MIN/6.54 MAX CS	1	EA		
KIT,HALL WELD-A	1	EA		
CTRZR ASSY,API,7 CSG X 8 3/4HOLE,HNGD	15	EA		

Tools and Accessories

Type	Size	Qty	Make	Depth	Type	Size	Qty	Make	Depth	Type	Size	Qty	Make
Guide Shoe					Packer					Top Plug			
Float Shoe					Bridge Plug					Bottom Plug			
Float Collar					Retainer					SSR plug set			
Insert Float										Plug Container			
Stage Tool										Centralizers			

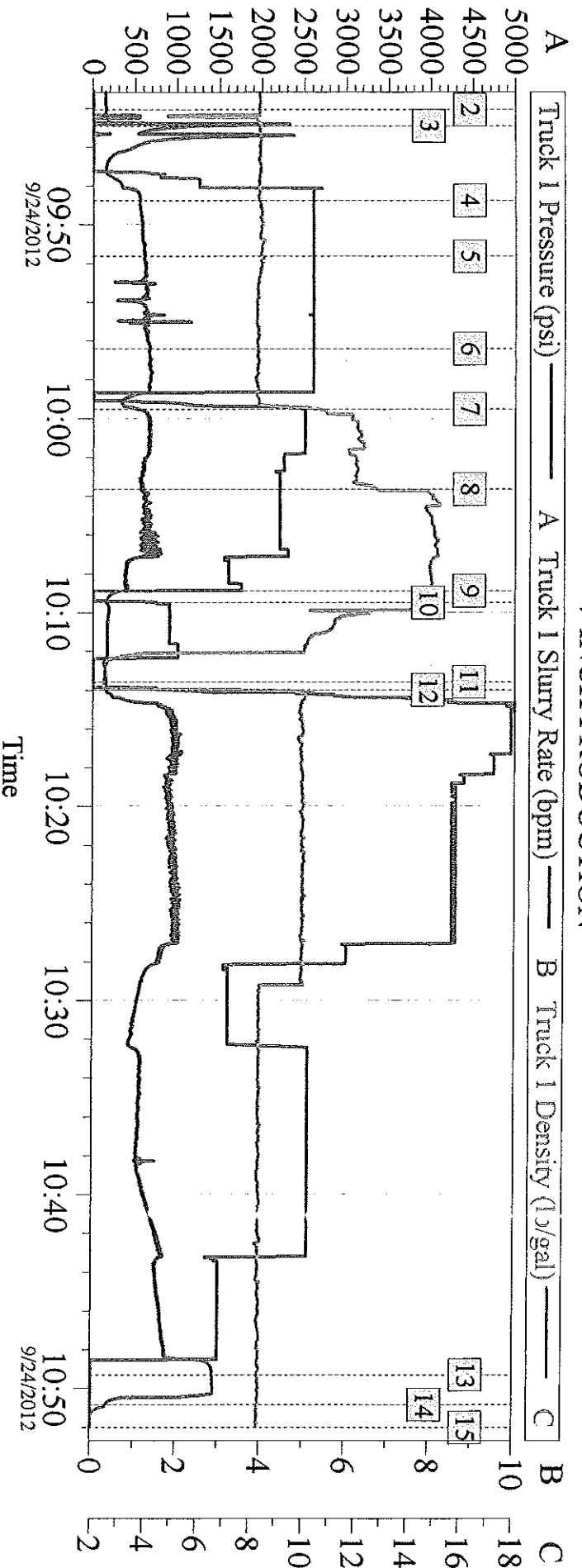
Miscellaneous Materials														
Gelling Agt		Conc		Surfactant		Conc		Acid Type		Qty		Conc	%	
Treatment Fld		Conc		Inhibitor		Conc		Sand Type		Size		Qty		
Fluid Data														
Stage/Plug #: 1														
Fluid #	Stage Type	Fluid Name			Qty	Qty uom	Mixing Density lbm/gal	Yield ft ³ /sk	Mix Fluid Gal/sk	Rate bbl/min	Total Mix Fluid Gal/sk			
1	MUD FLUSH III	MUD FLUSH III - SBM (528788)			24.00	bbl	8.4	.0	42.0	4.0				
2	ExtendaCem 11.8#	EXTENDACEM (TM) SYSTEM (452981)			50.0	sacks	11.8	2.11	11.51	5.0	11.51			
	11.507 Gal	FRESH WATER												
3	ExpandaCem B1 14.6#	EXPANDACEM (TM) SYSTEM (452979)			60.0	sacks	14.6	1.46	6.08	5.0	6.08			
	6.084 Gal	FRESH WATER												
4	Water Displacement				200	bbl	8.33	.0	42.0	8.0				
Calculated Values				Pressures			Volumes							
Displacement	200	Shut In: Instant				Lost Returns	00	Cement Slurry	35	Pad				
Top Of Cement		5 Min				Cement Returns	0	Actual Displacement	200	Treatment				
Frac Gradient		15 Min				Spacers	54	Load and Breakdown		Total Job	463			
Rates														
Circulating		Mixing			6	Displacement	8	Avg. Job			7			
Cement Left In Pipe	Amount	14 ft	Reason	Shoe Joint										
Frac Ring # 1 @		ID		Frac ring # 2 @		ID		Frac Ring # 3 @		ID		Frac Ring # 4 @		ID
The Information Stated Herein Is Correct					Customer Representative Signature									

The Road to Excellence Starts with Safety

Sold To #: 361672		Ship To #: 2953222		Quote #:		Sales Order #: 9836696	
Customer: EAST CHEYENNE GAS STORAGE				Customer Rep: ASHBY, JOHN			
Well Name: ECGS			Well #: 6-16 WPD009-2			API/UWI #: 05-075-09402	
Field: PEETZ WEST		City (SAP): PEETZ		County/Parish: Logan			State: Colorado
Legal Description:							
Lat: N 40.959 deg. OR N 40 deg. 57 min. 33.012 secs.				Long: W 103.221 deg. OR W -104 deg. 46 min. 44.472 secs.			
Contractor: CADE Drilling			Rig/Platform Name/Num: #22				
Job Purpose: Cement Production Casing						Ticket Amount:	
Well Type: Development Well			Job Type: Cement Production Casing				
Sales Person: AARON, WESLEY			Srvc Supervisor: LAVALLEY, LARRY			MBU ID Emp #: 419296	

Activity Description	Date/Time	Cht #	Rate bbl/ min	Volume bbl		Pressure psig		Comments
				Stage	Total	Tubing	Casing	
Start Job	09/24/2012 09:44							
Test Lines	09/24/2012 09:44						1470.0	RIG WATER WITH NO ADDITIVES
Pump Spacer 1	09/24/2012 09:48		4	20	20		549.0	RIG WATER WITH NO ADDITIVES
Pump Spacer 2	09/24/2012 09:51		4	24	44		600.0	RIG WATER WITH MUDFLUSH III ADDED
Pump Spacer 1	09/24/2012 09:56		4	10	54		665.0	RIG WATER WITH NO ADDITIVES
Pump Lead Cement	09/24/2012 09:59		6	19	193		512.0	50 SKS EXTENDACEM MIXED @ 11.8 PPG YIELD 2.11 ft3/sk and 11.51 gal/sk
Pump Tail Cement	09/24/2012 10:03		6	16	263		584.0	60 SKS EXPANDACEM MIXED @ 14.6PPG YIELD 1.46 ft3/sk and 6.08 gal/sk
Shutdown	09/24/2012 10:08						347.0	
Clean Lines	09/24/2012 10:09						159.0	
Drop Top Plug	09/24/2012 10:13						148.0	PRELOADED HWE TOP PLUG
Pump Displacement	09/24/2012 10:13		8	200	463		1086.0	RIG WATER WITH CLAY-WEBB III ADDED
Bump Plug	09/24/2012 10:49		3				1440.0	CALCULATED PRESSURE TO LAND WAS 570 PSI. CAUGHT CEMENT @ 110 BBLs AWAY
End Job	09/24/2012 10:50							

ECGS 6-16 WPD009-2 7 INCH PRODUCTION



Global Event Log

Intersection	TIP	TISR	TID	Intersection	TIP	TISR	TID
1 Starting Job	09:08:21	142.0	0.000	2 Start Job	09:44:04	144.0	0.000
3 Test Lines	09:44:55	1470	0.000	4 Pump Spacer 1	09:48:46	549.3	5.200
5 Pump Spacer 2	09:51:38	600.3	5.200	6 Pump Spacer 1	09:56:24	665.8	5.200
7 Pump Lead Cement	09:59:31	512.0	5.000	8 Pump Tail Cement	10:03:38	584.3	4.400
9 Shutdown	10:08:53	347.2	0.912	10 Clean Lines	10:09:29	159.5	1.427
11 Drop Top Plug	10:13:34	148.0	0.000	12 Pump Displacement	10:13:59	151.7	1.474
13 Bump Plug	10:49:18	1440	0.000	14 End Job	10:50:50	176.9	0.000
15 Ending Job	10:52:01-10.000	0.000	8.310				8.323

Customer: EAST CHEYENNE GAS STORAGE
Well Description: 7 INCH PRODUCTION

Job Date: 24-Sep-2012
THANKS LARRY LAVALLEY AND CREW

24-Sep-2012

Sales Order #: 9836696

OptiCem v6.4.10
24-Sep-12 10:52