

Well Name: LILLI UNIT 02-12

VERTICAL - ORIGINAL HOLE, 10/11/2012 9:10:49 AM

## Well Header

API 05-123-13866	Business Unit WATTENBERG	District 25	Well Config VERTICAL
Original KB Elevation (ft) 4,773.00	KB - GL / MSL (ftKB) 9.00	Spud Date 3/21/1988	P & A Date
Comment			

Directions To Well

## Surface Location (Congressional)

Quarter 1	Quarter 2	Quarter 3	Quarter 4	Section	Township	Twnshp...	Range	Rng E/W...
		NW	NE	12	8	N	59	W

## Bottom Hole Location

North-South Distance (ft)	From N or S Line	East-West Distance (ft)	From E or W Line
---------------------------	------------------	-------------------------	------------------

## Plug Back Total Depths

Date	Depth (ftKB)	Method	Com
3/27/1988	6,533.0	CASING TALLY	
5/25/1999	6,531.0	TAG	CIBP PUSHED TO 6531'

## Wellbore Sections

Section Des	Size (in)	Act Top (ftKB)	Act Btm (ftKB)
SURFACE	12 1/4	9.0	220.0
PRODUCTION	7 7/8	220.0	6,580.0

## Zone Statuses

Zone Name	Status Date	Status	Job
D SAND	4/8/1988	PR	DRILLING/COMPLETION - ORIGINAL, 3/21/1988 00:00
D SAND	4/13/2007	SI	OTHER, 4/9/2007 00:00

## Casing Strings

### Surface, 216.0ftKB

Casing Description	Run Date	OD (in)	Wt/Len (lb/ft)	Grade	Top (ftKB)	Set Depth...
Surface	3/22/1988	8 5/8	24.00	J-55	9.0	216.0

### Production, 3,140.0ftKB

Casing Description	Run Date	OD (in)	Wt/Len (lb/ft)	Grade	Top (ftKB)	Set Depth...
Production	5/15/1999	4 1/2	10.50	J-55	9.0	3,140.0

### Production, 6,570.0ftKB

Casing Description	Run Date	OD (in)	Wt/Len (lb/ft)	Grade	Top (ftKB)	Set Depth...
Production	3/27/1988	4 1/2	10.50	J-55	9.0	6,570.0

## Cement

Description	Top Depth (ftKB)	Bottom Depth (ftKB)
SURFACE CASING CEMENT	9.0	216.0
PRODUCTION CASING CEMENT	5,470.0	6,570.0
Cement Squeeze	2,890.0	3,190.0

## Tubing Components

Item Des	OD (in)	Wt (lb/ft)	Grade	Jts	Len (ft)	Btm (ftKB)	Btm (TVD) (ftKB)
Tubing	2 3/8	4.70	J-55	194	6,313.00	6,322.0	
Anchor/catcher	4			1	3.00	6,325.0	
Tubing	2 3/8	4.70	J-55	6	188.00	6,513.0	
Seal Nipple	2 3/8			1	1.00	6,514.0	
Perforated Joint	2 3/8			1	3.00	6,517.0	

## Rods & Pumps

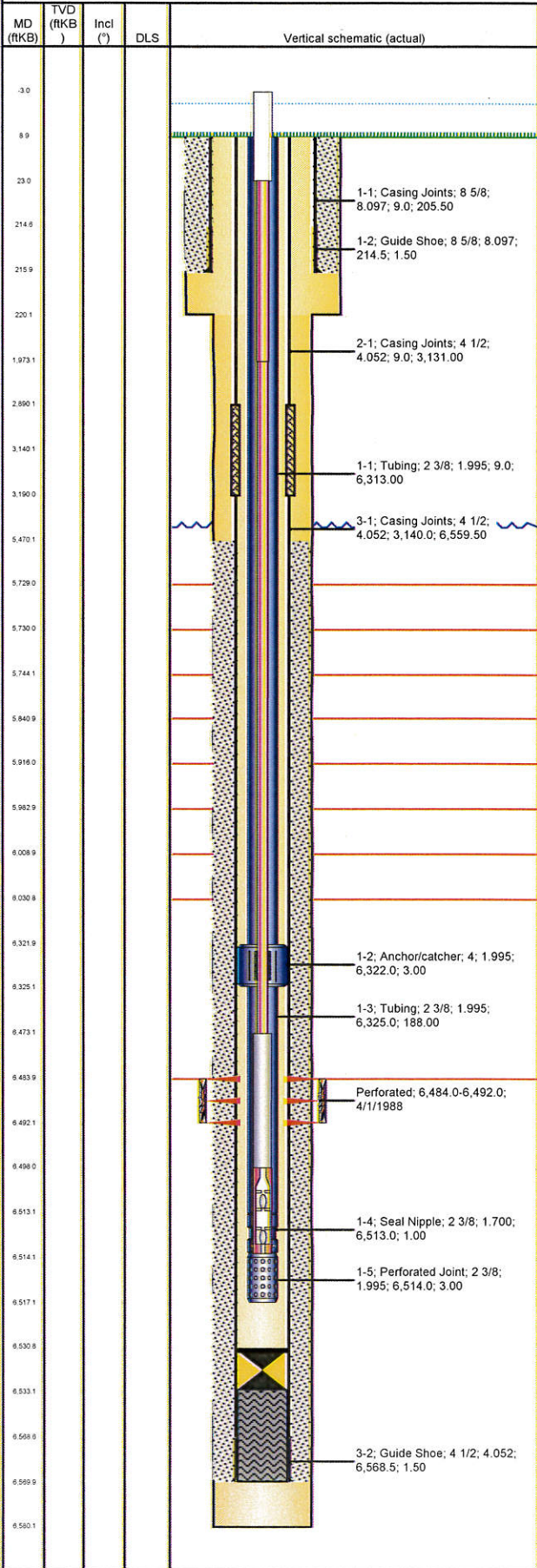
Rod Description	Run Date	Set Depth (ftKB)
Rod	4/13/2007	6,514.0

Comment

Item Description	OD Nominal (in)	Joints	Length (ft)
Polished Rod	1 1/2	1	26.00
Sucker Rod	7/8	78	1,950.00
Sucker Rod	3/4	180	4,500.00
Sinker Bar	1 1/2	1	25.00
RHBC Pump - BHD	1 1/2	1	16.00

## Perforation Data

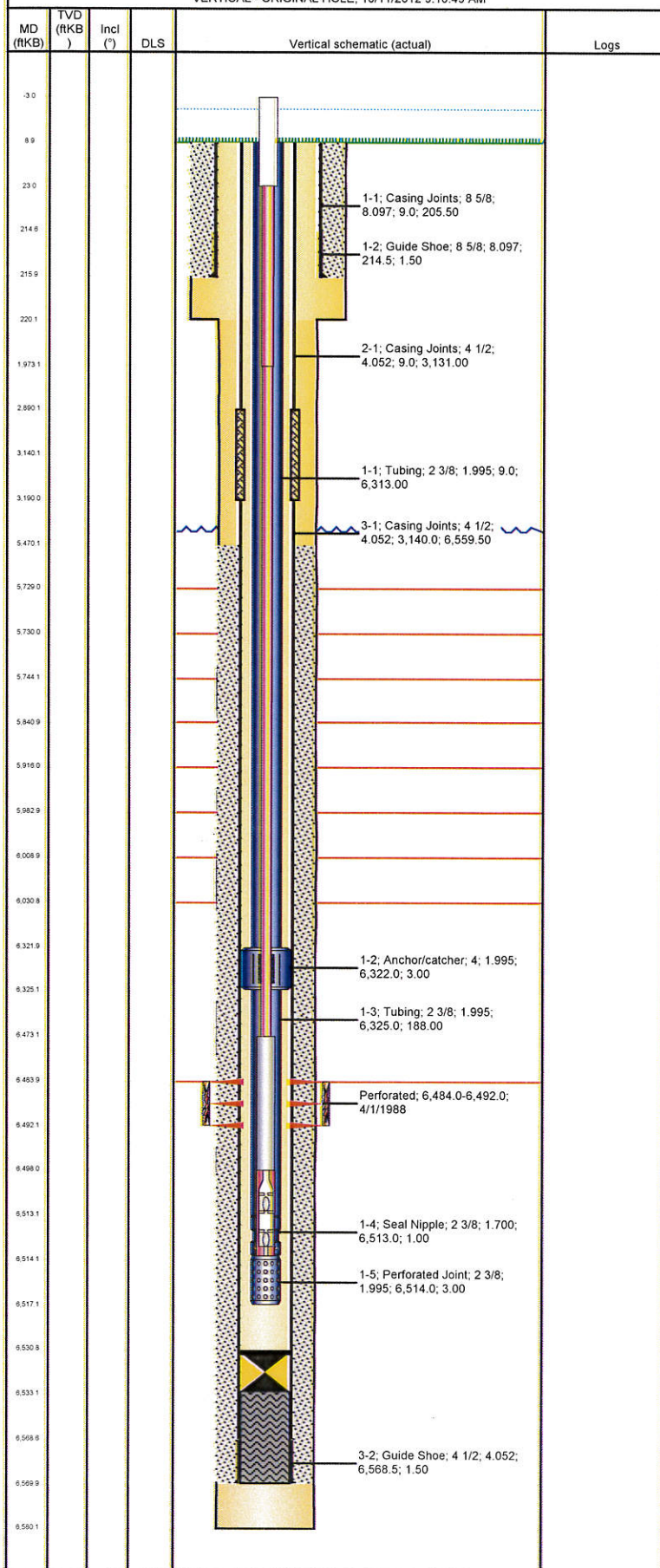
Zone	Bnch/St g	Entered Shot Total	Top (ftKB)	Btm (ftKB)	Date
D SAND, ORIGINAL HOLE		33	6,484.0	6,492.0	4/1/1988





Well Name: LILLI UNIT 02-12

VERTICAL - ORIGINAL HOLE, 10/11/2012 9:10:49 AM



## Stimulations & Treatments

Date	Zone	Primary Job Type
4/5/1988	D SAND, ORIGINAL HOLE	DRILLING/COMPLETION - ORIGINAL
Technical Result	Tech Result Details	Tech Result Note
Comment		

## Other In Hole

Run Date	Des	OD (in)	Top (ftKB)	Btm (ftKB)
5/25/1999	Bridge Plug - Permanent	4	6,531.0	6,533.0

## Logs

Date	Type	Top (ftKB)	Btm (ftKB)
3/27/1988	COMPENSATED DENSITY	5,596.0	6,555.0
3/27/1988	INDUCTION	216.0	6,572.0