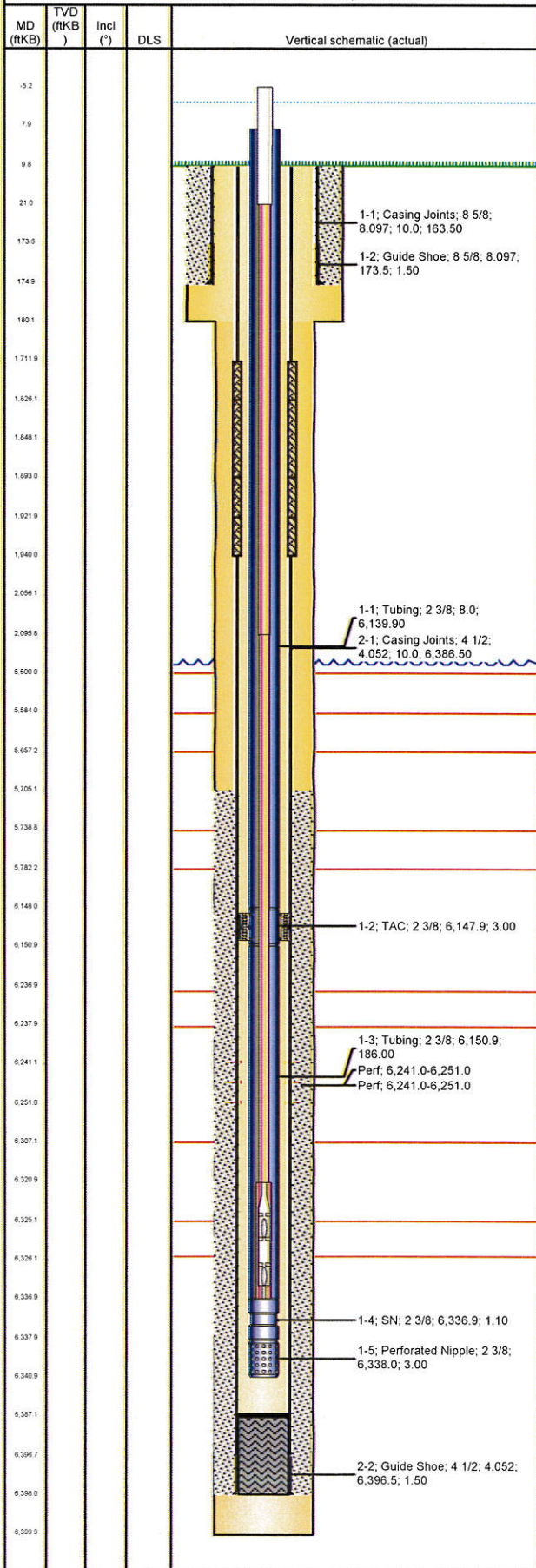


Well Name: LILLI UNIT 16-03

VERTICAL - ORIGINAL HOLE, 10/11/2012 9:10:23 AM



## Well Header

API 05-123-13605	Business Unit WATTENBERG	District 25	Well Config VERTICAL
Original KB Elevation (ft) 4,707.00	KB - GL / MSL (ftKB) 10.00	Spud Date 9/21/1987	P & A Date

Comment

Directions To Well

## Surface Location (Congressional)

Quarter 1	Quarter 2	Quarter 3	Quarter 4	Section	Township	Twship...	Range	Rng E/W...
	SW	SE	SE	3	8	N	58	W

## Bottom Hole Location

North-South Distance (ft)	From N or S Line	East-West Distance (ft)	From E or W Line
---------------------------	------------------	-------------------------	------------------

## Plug Back Total Depths

Date	Depth (ftKB)	Method	Com
9/26/1987	6,387.0	CASING TALLY	

## Wellbore Sections

Section Des	Size (in)	Act Top (ftKB)	Act Btm (ftKB)
SURFACE	12 1/4	10.0	180.0
PRODUCTION	7 7/8	180.0	6,400.0

## Zone Statuses

Zone Name	Status Date	Status	Job
-----------	-------------	--------	-----

## Casing Strings

### Surface, 175.0ftKB

Casing Description	Run Date	OD (in)	Wt/Len (lb/ft)	Grade	Top (ftKB)	Set Depth...
Surface	9/21/1987	8 5/8	24.00		10.0	175.0

### Production, 6,398.0ftKB

Casing Description	Run Date	OD (in)	Wt/Len (lb/ft)	Grade	Top (ftKB)	Set Depth...
Production	9/26/1987	4 1/2	10.50	J-55	10.0	6,398.0

## Cement

Description	Top Depth (ftKB)	Bottom Depth (ftKB)
SURFACE CASING CEMENT	10.0	175.0
Description	Top Depth (ftKB)	Bottom Depth (ftKB)
PRODUCTION CASING CEMENT	5,705.0	6,398.0
Description	Top Depth (ftKB)	Bottom Depth (ftKB)
Sqz Casing	1,712.0	1,940.0
Description	Top Depth (ftKB)	Bottom Depth (ftKB)
Sqz Casing	1,848.0	1,922.0
Description	Top Depth (ftKB)	Bottom Depth (ftKB)
Sqz Casing	1,826.0	1,893.0

## Tubing Components

Item Des	OD (in)	Wt (lb/ft)	Grade	Jts	Len (ft)	Btm (ftKB)	Btm (TVD) (ftKB)
Tubing	2 3/8			199	6,139.90	6,147.9	
TAC	2 3/8				3.00	6,150.9	
Tubing	2 3/8			6	186.00	6,336.9	
SN	2 3/8				1.10	6,338.0	
Perforated Nipple	2 3/8				3.00	6,341.0	

## Rods & Pumps

Rod Description	Run Date	Set Depth (ftKB)
Rods	6/17/2008	6,336.9

Comment

Item Description	OD Nominal (in)	Joints	Length (ft)
Polished Rod	1 1/4		26.00
Item Description	OD Nominal (in)	Joints	Length (ft)
Sucker Rods	7/8	83	2,075.00
Item Description	OD Nominal (in)	Joints	Length (ft)
Sucker Rod	3/4	169	4,225.00
Item Description	OD Nominal (in)	Joints	Length (ft)
2" x 1 1/4" x 16 Two-Stage	1 1/4		16.00

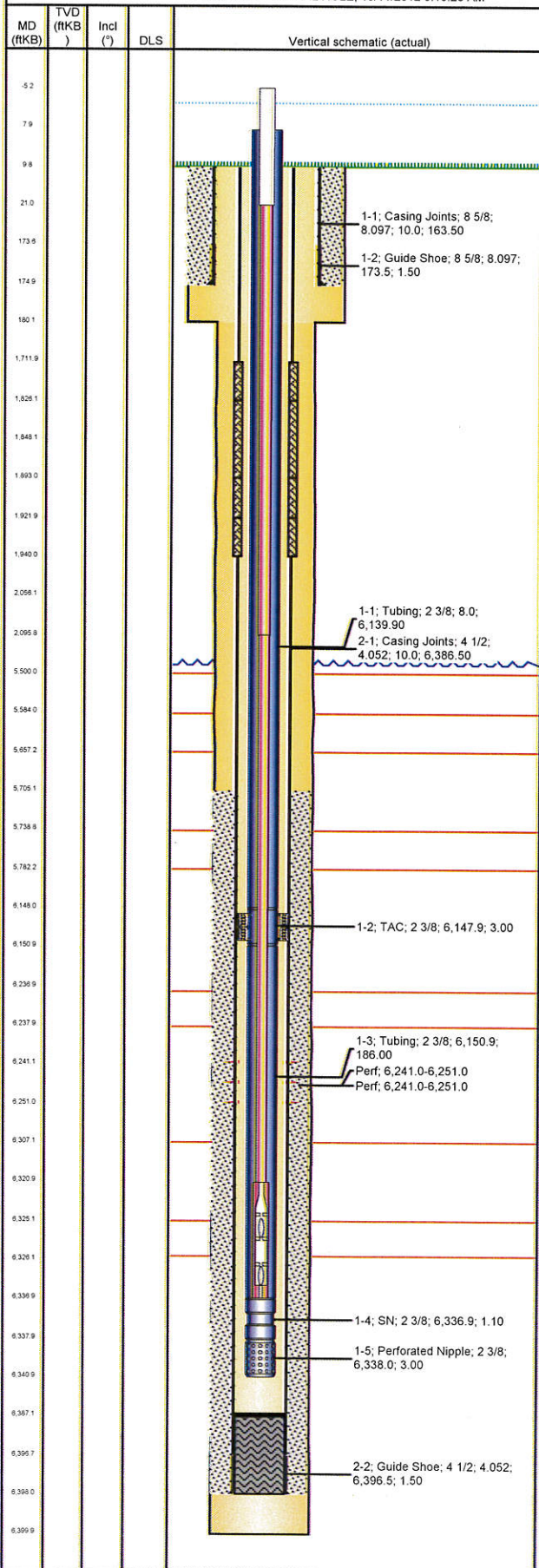
## Perforation Data

Zone	Bnch/St g	Entered Shot Total	Top (ftKB)	Btm (ftKB)	Date
			6,241.0	6,251.0	
			6,241.0	6,251.0	



Well Name: LILLI UNIT 16-03

VERTICAL - ORIGINAL HOLE, 10/11/2012 9:10:23 AM



## Stimulations & Treatments

Date	Zone	Primary Job Type
Technical Result	Tech Result Details	Tech Result Note
Comment		

## Other In Hole

Run Date	Des	OD (in)	Top (ftKB)	Btm (ftKB)

## Logs

Date	Type	Top (ftKB)	Btm (ftKB)
9/25/1987	COMPENSATED DENSITY	5,400.0	6,396.0
9/25/1987	INDUCTION	175.0	6,396.0
10/8/1987	CEMENT BOND	5,630.0	6,368.0
3/6/2007	CEMENT BOND	1,500.0	5,870.0
3/21/2007	CEMENT BOND	970.0	2,524.0