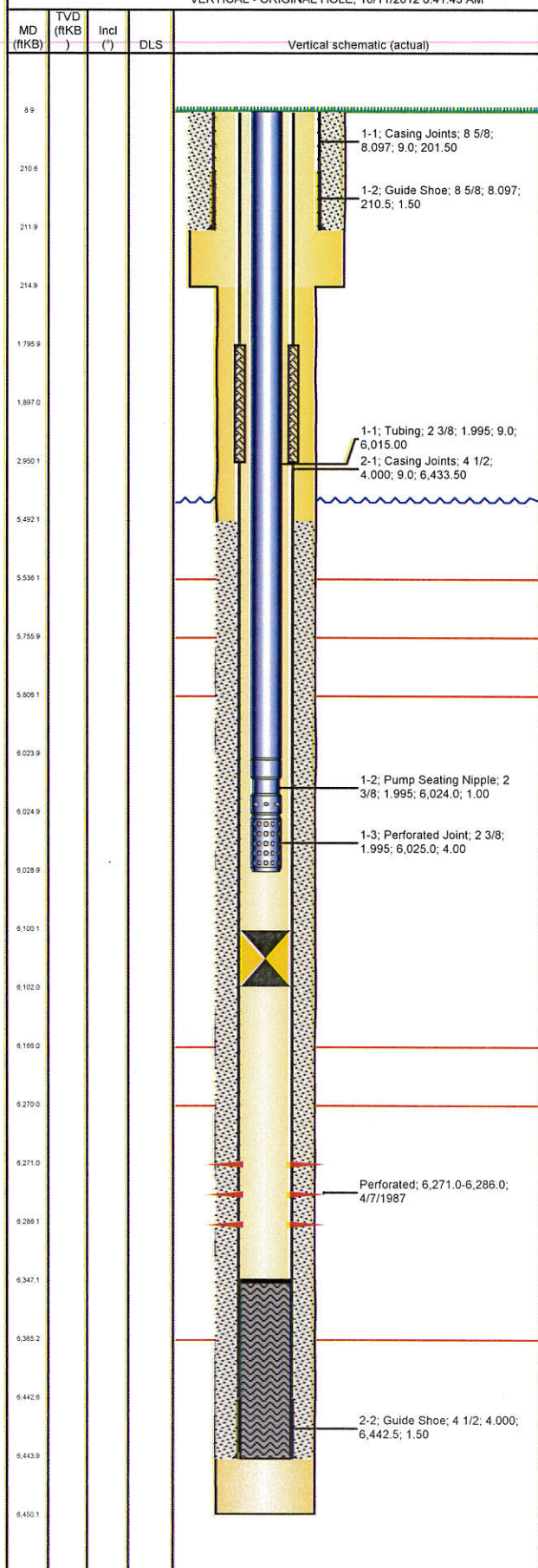


Well Name: LILLI UNIT 07-10

VERTICAL - ORIGINAL HOLE, 10/11/2012 8:41:43 AM



## Well Header

API	Business Unit	District	Well Config
05-123-13403	WATTENBERG	25	VERTICAL
Original KB Elevation (ft)	KB - GL / MSL (ftKB)	Spud Date	P & A Date
4,723.00	9.00	3/30/1987	

## Comment

CEMENT SQUEEZE HOLES IN CASING FROM 1796'-2950' (4/23/02). FOUND ANOTHER LEAK @ 2845'. SHUT WELL IN.

## Directions To Well

WCR 129 & WCR 94, N 1.1, E INTO

## Surface Location (Congressional)

Quarter 1	Quarter 2	Quarter 3	Quarter 4	Section	Township	Twnshp...	Range	Rng E/W...
		SW	NE	10	8	N	58	W

## Bottom Hole Location

North-South Distance (ft)	From N or S Line	East-West Distance (ft)	From E or W Line
---------------------------	------------------	-------------------------	------------------

## Plug Back Total Depths

Date	Depth (ftKB)	Method	Com
4/5/1987	6,347.0	CASING TALLY	

## Wellbore Sections

Section Des	Size (in)	Act Top (ftKB)	Act Btm (ftKB)
SURFACE	12 1/4	9.0	215.0
PRODUCTION	7 7/8	215.0	6,450.0

## Zone Statuses

Zone Name	Status Date	Status	Job
D SAND	9/5/1987	PR	DRILLING/COMPLETION - ORIGINAL, 3/30/1987 00:00
D SAND	5/1/2002	SI	CASING REPAIR, 4/12/2002 00:00

## Casing Strings

### Surface, 212.0ftKB

Casing Description	Run Date	OD (in)	Wt/Len (l...)	Grade	Top (ftKB)	Set Depth...
Surface	3/31/1987	8 5/8	24.00	J-55	9.0	212.0

### Production, 6,444.0ftKB

Casing Description	Run Date	OD (in)	Wt/Len (l...)	Grade	Top (ftKB)	Set Depth...
Production	4/4/1987	4 1/2	11.60	K-55	9.0	6,444.0

## Cement

Description	Top Depth (ftKB)	Bottom Depth (ftKB)
SURFACE CASING CEMENT	9.0	212.0
Description	Top Depth (ftKB)	Bottom Depth (ftKB)
PRODUCTION CASING CEMENT	5,492.0	6,444.0
Description	Top Depth (ftKB)	Bottom Depth (ftKB)
Cement Squeeze	1,796.0	1,897.0
Description	Top Depth (ftKB)	Bottom Depth (ftKB)
Cement Squeeze	1,796.0	2,950.0

## Tubing Components

Item Des	OD (in)	Wt (lb/ft)	Grade	Jts	Len (ft)	Btm (ftKB)	Btm (TVD) (ftKB)
Tubing	2 3/8	4.70	J-55	188	6,015.00	6,024.0	
Pump Seating Nipple	2 3/8			1	1.00	6,025.0	
Perforated Joint	2 3/8			1	4.00	6,029.0	

## Perforation Data

Zone	Bnch/St g	Entered Shot Total	Top (ftKB)	Btm (ftKB)	Date
D SAND, ORIGINAL HOLE		31	6,271.0	6,286.0	4/7/1987

## Other In Hole

Run Date	Des	OD (in)	Top (ftKB)	Btm (ftKB)
5/1/2002	Bridge Plug - Permanent	3.99	6,100.0	6,102.0

## Logs

Date	Type	Top (ftKB)	Btm (ftKB)
4/3/1987	COMPENSATED DENSITY	5,450.0	6,439.0
4/3/1987	INDUCTION	212.0	6,436.0
4/3/1987	MICROLOG	5,450.0	6,403.0
4/7/1987	CEMENT BOND	5,580.0	6,408.0
7/22/1988	CEMENT BOND	5,430.0	6,395.0