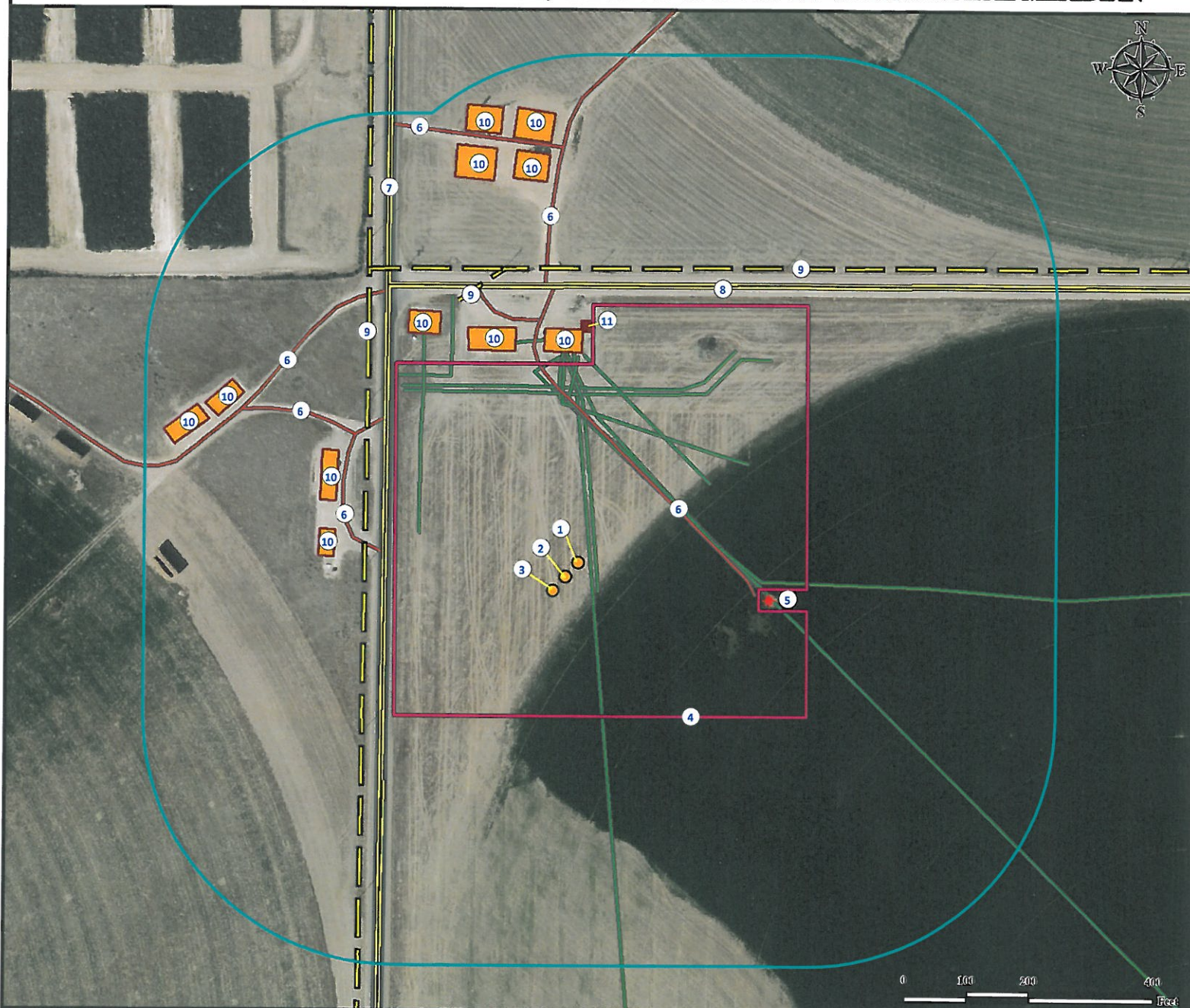


Location Drawing

REIGLE 29C-9HZ

Horizontal Multi Well Pad

NW¼ NW¼ SECTION 4, TOWNSHIP 2 NORTH, RANGE 65 WEST OF THE 6TH PRINCIPAL MERIDIAN



1. Proposed well REIGLE 29N-9HZ.
2. Proposed well REIGLE 29C-9HZ.
3. Proposed well REIGLE 4N-9HZ.
4. Operational Disturbance Area.
5. Existing Well MOSER 4-4 is ±327' SE.

6. Private Roads are ±205' NE, ±293' NW, ±408' NW, ±541' NW, ±469' N, and ±689' N.
7. County Road 41 is ±292' W.
8. County Road 26 is ±468' N.
9. Powerlines are ±476' NW, ±322' W, and ±494' N.

10. Existing Facilities are ±367' N, ±371' NW, ±438' NW, ±373' NW, ±387' NW, ±625' NW, ±594' NW, ±634' N, ±696' NW, ±646' NW, and ±718' NW.
11. Emission Control Device is ±403' NE.

Legend

- | | | |
|---|---|--|
| ● Proposed Well | — Powerline | Existing Facility |
| ■ ECD | ★ Existing Well | Disturbance Area |
| — Flowline | — Private Road | 400' Radius |
| | — Public Road | |

Reference Location

** All Measurements are Made from Reference Well REIGLE 29C-9HZ **

Lat: 40.173360° Long: -104.677032° (NAD83)
Elevation: 4869 Feet

Surface Use: Irrigated Crop



Use our resources to find yours!

www.petro-fs.com
(303) 928-7128

Field Date: 06/28/2012
Drafting Date: 10/04/2012
Drafter: PAH
Revision: 1

Data Sources:

- Aerial courtesy of Anadarko Petroleum Corporation (2010)

Prepared for:



KERR-MCGEE OIL & GAS ONSHORE LP