

Project: Wattenberg Field
Site: LD (Sec.11-T09N-R58W) Weld County, CO
Well: Castor LD11-75HN
Wellbore: Original Drilling
Design: APD - Rev 0

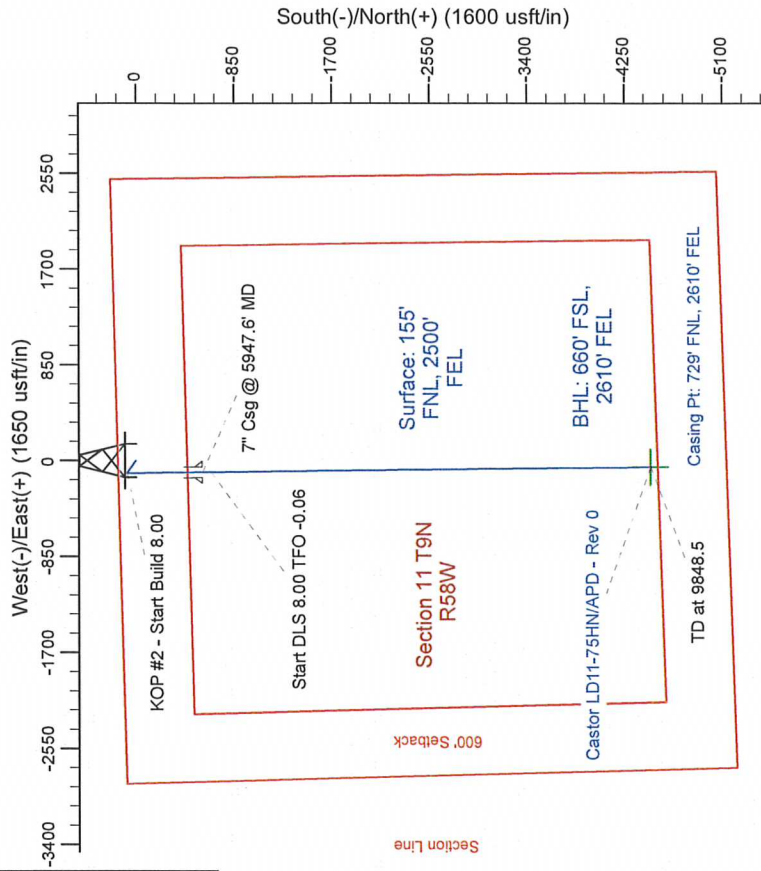
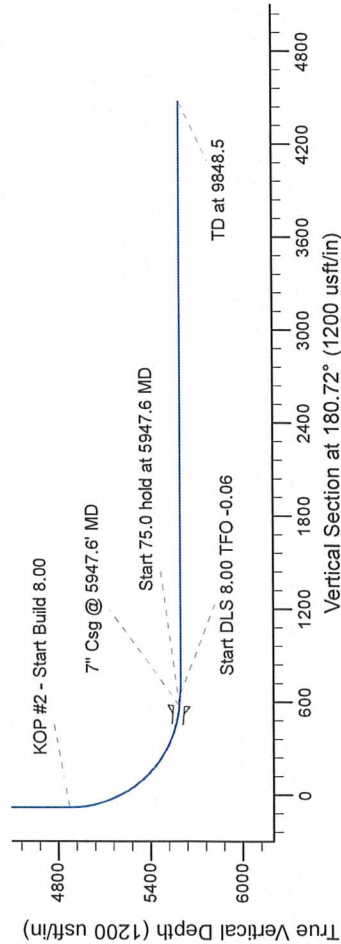
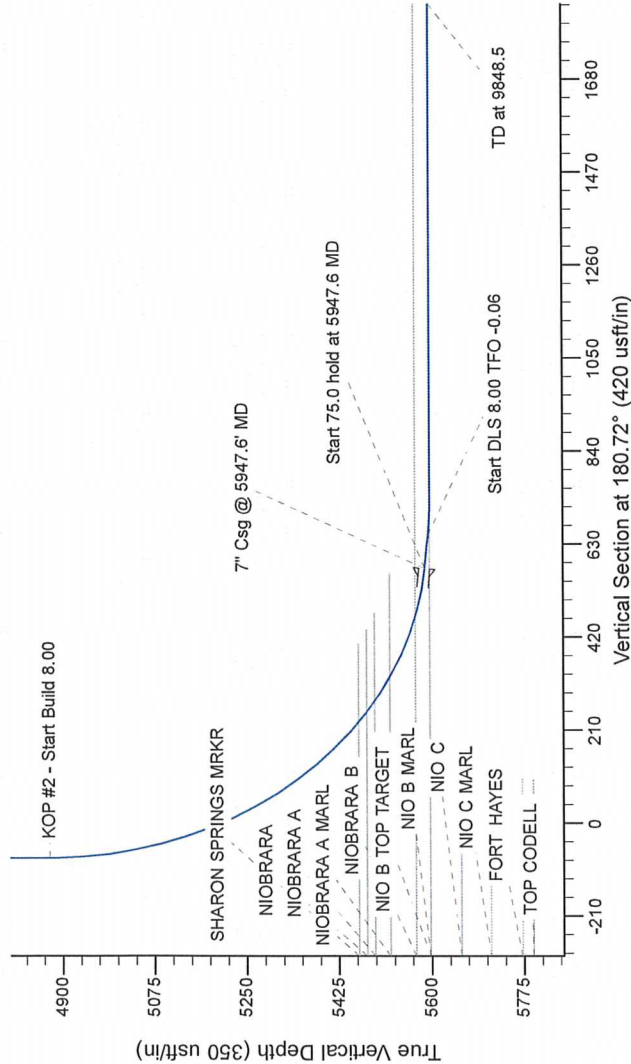
Northern Region Drilling

Geodetic System: US State Plane 1983
Datum: North American Datum 1983
Ellipsoid: GRS 1980
Zone: Colorado Northern Zone
System Datum: Mean Sea Level

SECTION DETAILS

Sec	MD	Inc	Azi	TVD	+N/S	+E/W	Dleg	TFace	V/Sect	Target
1	0.0	0.00	0.00	0.0	0.0	0.0	0.00	0.00	0.0	0.0
2	2500.0	0.00	0.00	2500.0	0.0	0.0	0.00	0.00	0.0	0.0
3	2981.9	12.05	306.03	2978.3	29.7	-40.8	2.50	306.03	-29.2	-49.4
4	3149.9	12.05	306.03	3142.7	50.3	-69.2	0.00	0.00	-49.4	-78.6
5	3631.8	0.00	0.00	3621.0	80.0	-110.0	2.50	180.00	0.00	-78.6
6	4885.1	0.00	0.00	4874.3	80.0	-110.0	0.00	0.00	0.00	575.0
7	5947.6	85.00	179.32	5587.8	-573.7	-102.2	8.00	179.32	0.00	649.7
8	6022.6	85.00	179.32	5594.3	-648.4	-101.4	8.00	0.00	0.00	712.1
9	6085.1	90.00	179.32	5597.0	-710.9	-100.6	8.00	0.00	0.00	4474.4
10	9948.5	90.00	179.32	5597.0	-4474.0	-56.0	0.00	0.00	0.00	4474.4

Castor LD11-75HN BHL 660'FSL, 2610'FEL



T G M

Azimuths to Grid North
True North: -1.08°
Magnetic North: 7.08°

Magnetic Field
Strength: 53307.4snT
Dip Angle: 67.46°
Date: 9/28/2012
Model: IGRF200510

WELL DETAILS: Castor LD11-75HN

Ground Level:	4698.0	Longitude
North	1528761.28	Latitude
East	3462346.53	-103.830650

Plan: APD - Rev 0 (Castor LD11-75HN/Original Drilling)

Created By:	Carrie Willers	Date:	10/59, October 01 2012
Checked:		Date:	
Reviewed:		Date:	
Approved:		Date:	