

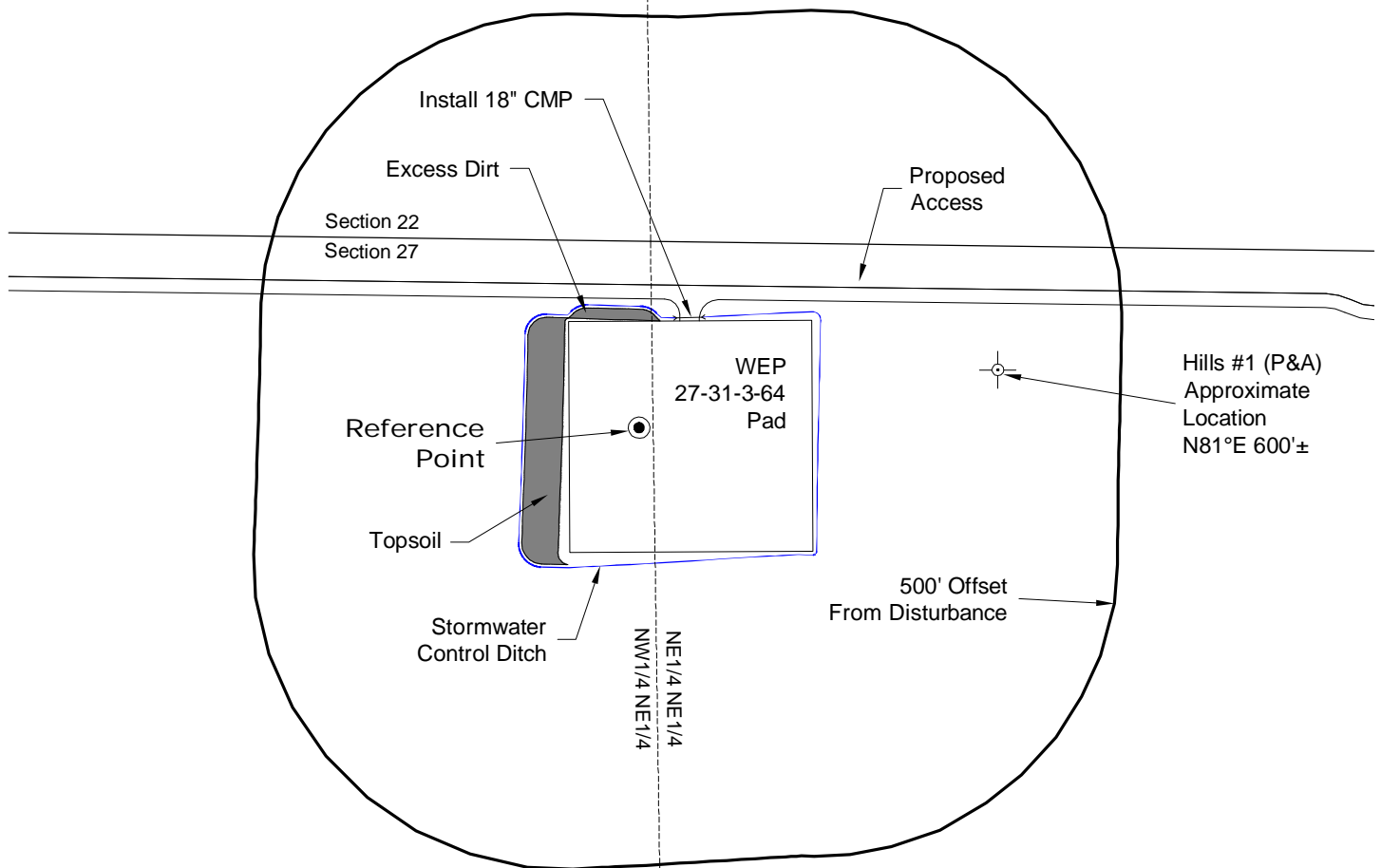
LOCATION DRAWING

VEGETATION:
STUBBLE

SURFACE USE:
AGRICULTURAL

REFERENCE POINT

LATITUDE: 39.76682
LONGITUDE: -104.53181
FOOTAGE: 307 FNL 1342 FEL
GROUND ELEVATION: 5509.0
PDOP: 2.7 DATE: 5/11/2012
INSTRUMENT OPERATOR: MARC WOODARD



NOTE:
ALL PRODUCTION FACILITIES WILL BE ON PAD.

DISTURBANCE ACREAGE:
4.9± DRILLING OPERATIONS
1.0± INTERIM RECLAIM

10/1/12



North

0 300 600

Graphic Scale in Feet
1" = 300'



LAND SURVEYING AND MAPPING
LAFAYETTE - WINTER PARK
Ph 303 666 0379 Fx 303 665 6320

CARRIZO OIL & GAS, INC
WEP 27-31-3-64 PAD

NW1/4 NE1/4 SECTION 27 T3S R64W
6th PM ADAMS COUNTY COLORADO