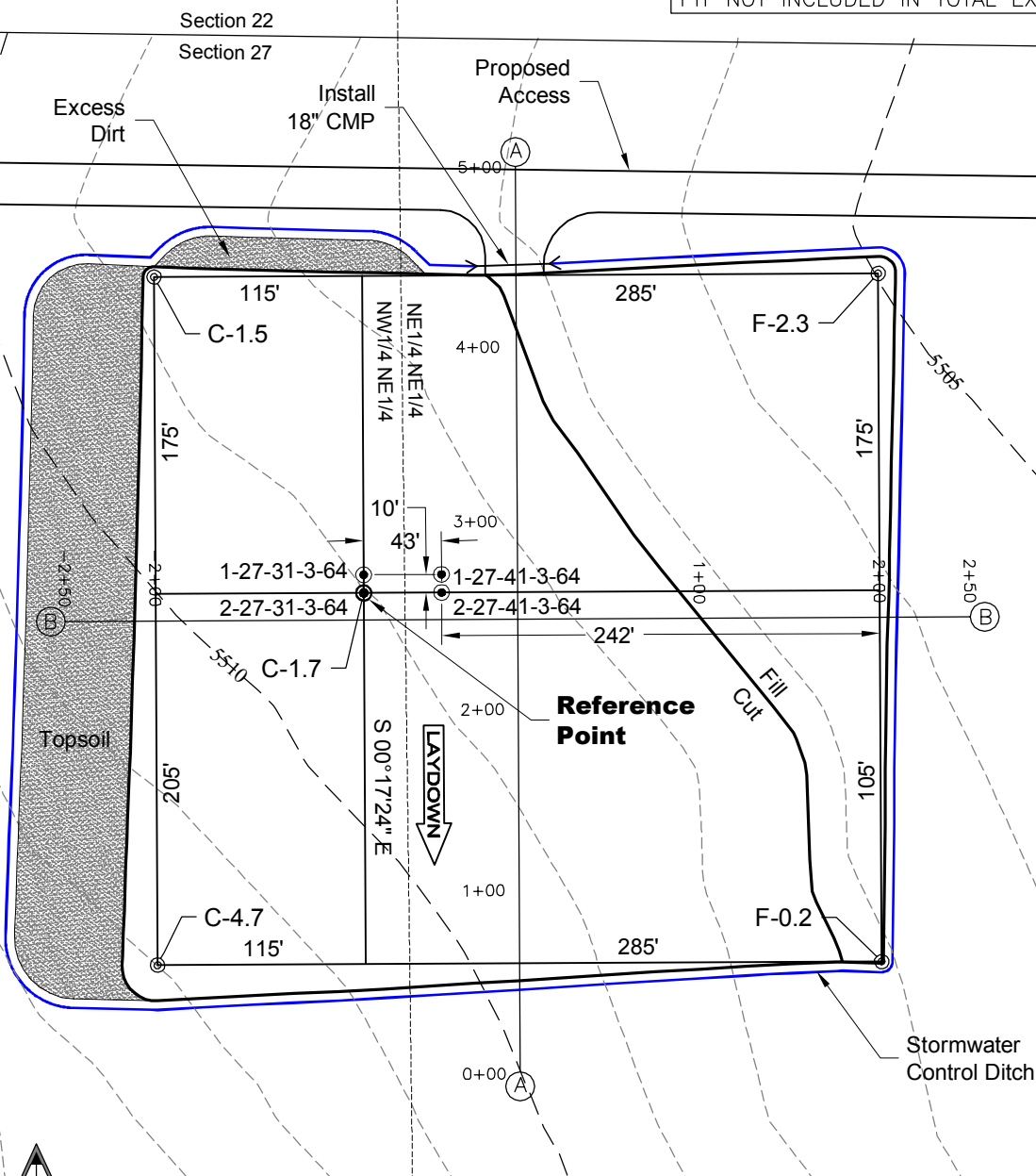


1 of 2

SURFACE USE:
AGRICULTURAL

PAD 380'X400' ELEV=5507.3'			
DISTURBED AREA=4.9± ACRES			
ESTIMATED DIRT QUANTITIES			
CUTx10%	FILL	TOPSOIL	EXCESS
7,840	1,260	6,100	480

NOTE: VOLUMES IN CUBIC YARDS. TOPSOIL INCLUDED IN VOLUMES AT A DEPTH OF 12". PIT NOT INCLUDED IN TOTAL EXCESS.



NOTE:
10% ALLOWANCE IS MADE FOR SOIL EXPANSION.



North



Graphic Scale in Feet
1" = 100'

10/1/12



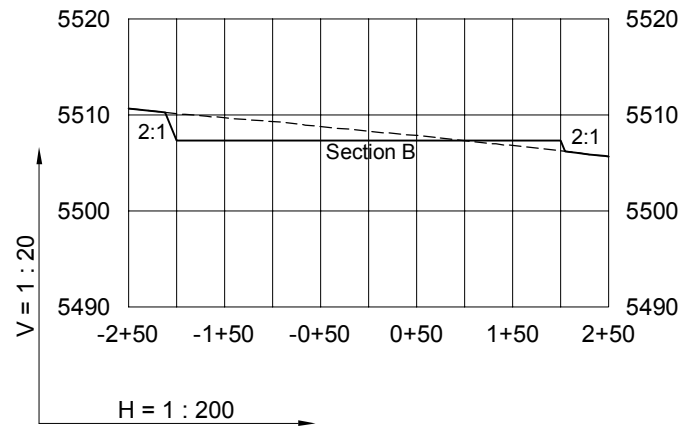
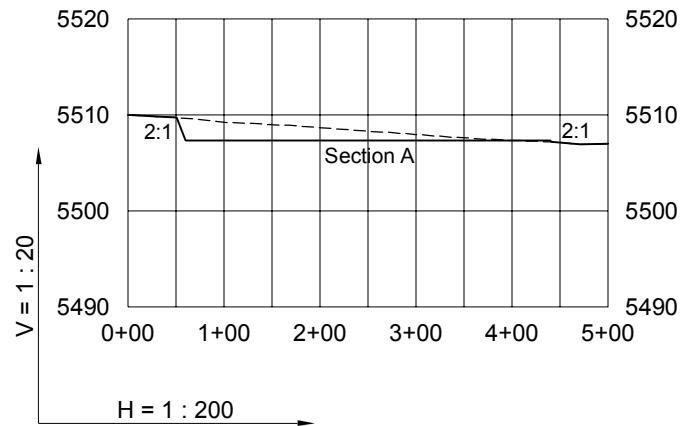
LAND SURVEYING AND MAPPING
LAFAYETTE - WINTER PARK
Ph 303 666 0379 Fx 303 665 6320

CARRIZO OIL & GAS, INC
WEP 27-31-3-64 PAD

NW1/4 NE1/4 SECTION 27 T3S R64W
6th PM ADAMS COUNTY COLORADO

CONSTRUCTION LAYOUT DRAWING

2 of 2



10/1/12

----- Existing Ground
 _____ Proposed Grade

GEO SURV

LAND SURVEYING AND MAPPING
 LAFAYETTE - WINTER PARK
 Ph 303 666 0379 Fx 303 665 6320

CARRIZO OIL & GAS, INC
 WEP 27-31-3-64 PAD

NW1/4 NE1/4 SECTION 27 T3S R64W
6th PM ADAMS COUNTY COLORADO