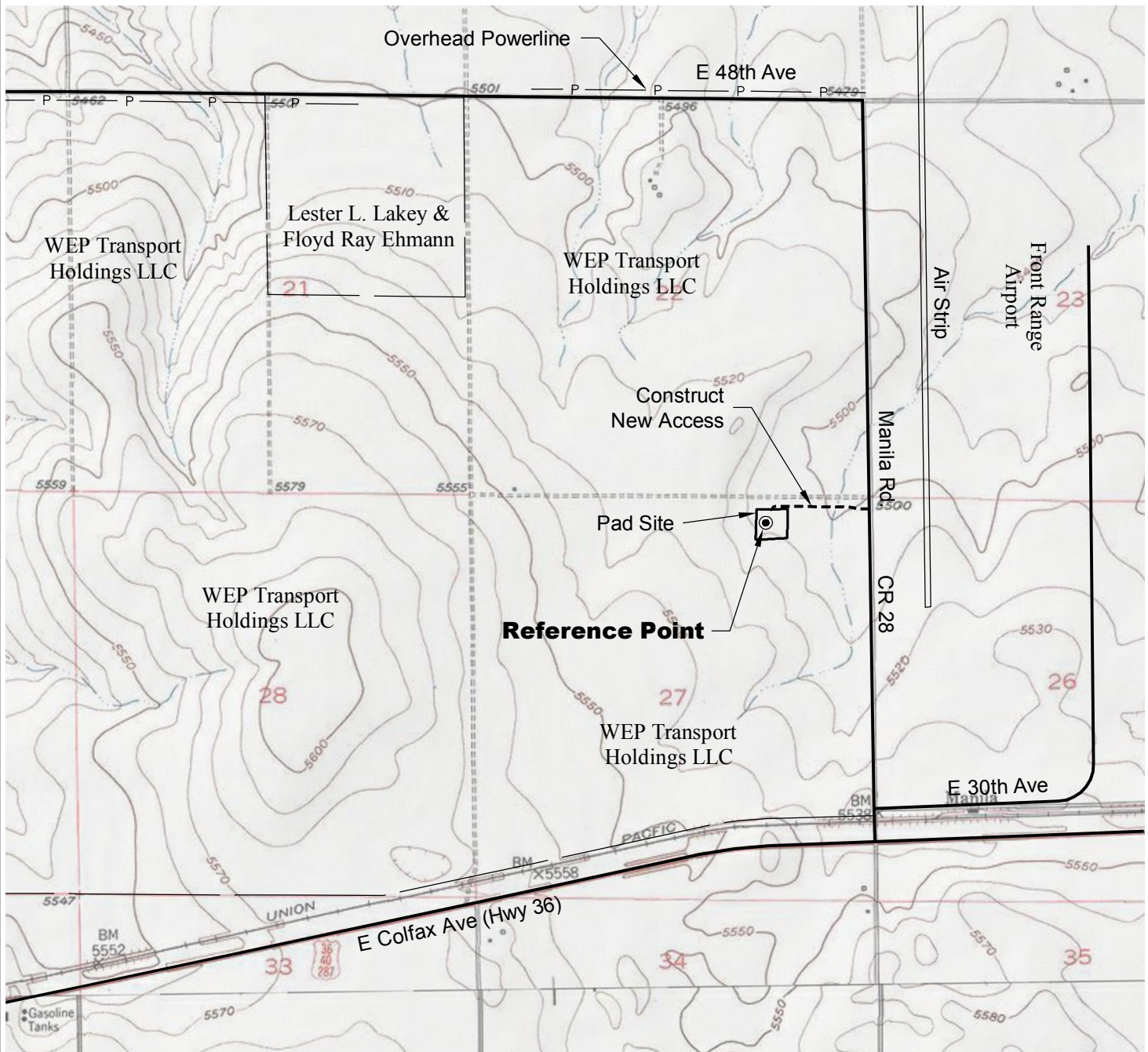


ACCESS ROAD MAP



DRIVING DIRECTIONS:

MP 0.0 - Exit 295 off I-70; North along N. Watkins Rd (Lessig St.)
 MP 0.3 - Right (East) on E. Colfax Ave (Hwy36);
 MP 4.4 - Left (North) on CR 28;
 MP 5.3 - Left (West) on access to pad;
 MP 5.5 - WEP 27-31-3-64 Pad



North

0 2000 4000

Graphic Scale in Feet
 1" = 2000'



LAND SURVEYING AND MAPPING
 LAFAYETTE - WINTER PARK
 Ph 303 666 0379 Fx 303 665 6320

CARRIZO OIL & GAS, INC
 WEP 27-31-3-64 PAD

NW1/4 NE1/4 SECTION 27 T3S R64W
6th PM ADAMS COUNTY COLORADO

10/1/12