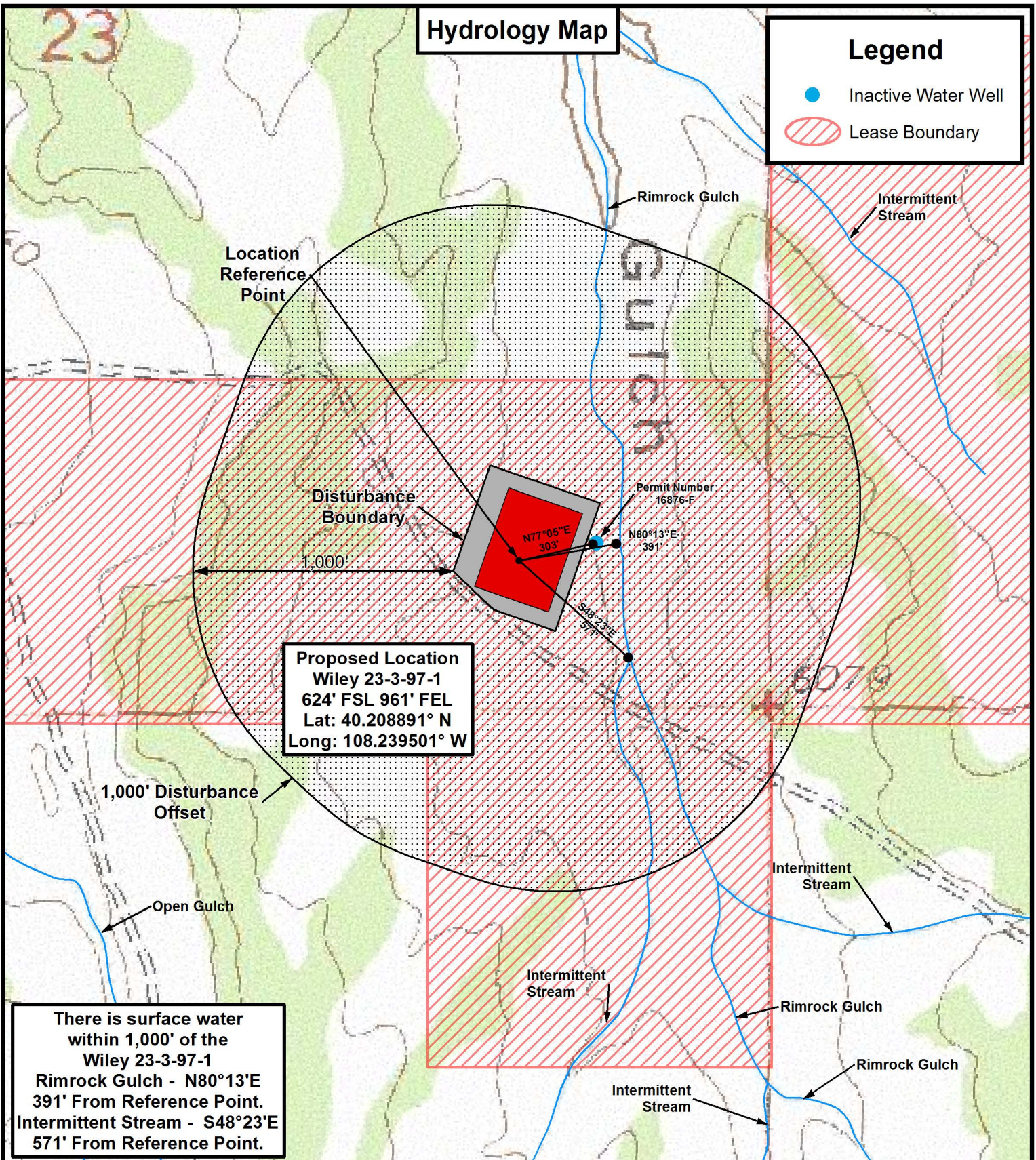


Hydrology Map

Legend

- Inactive Water Well
- Lease Boundary



Proposed Location
 Wiley 23-3-97-1
 624' FSL 961' FEL
 Lat: 40.208891° N
 Long: 108.239501° W

There is surface water within 1,000' of the Wiley 23-3-97-1
 Rimrock Gulch - N80°13'E 391' From Reference Point.
 Intermittent Stream - S48°23'E 571' From Reference Point.

Tri State Land Surveying, Inc.
 180 NORTH VERNAL AVE. VERNAL, UTAH 84078

P: (435) 781-2501
 F: (435) 781-2518



ENDEAVOUR OPERATING CORPORATION

Wiley 23-3-97-1
 SEC. 23, T3N, R97W, 6th P.M.
 Rio Blanco County, CO.

DRAWN BY:	D.C.R.	REVISED:	10-10-12 D.C.R.
DATE:	09-05-2012		
SCALE:	1" = 500'		

TOPOGRAPHIC MAP

SHEET
H