

ENDEAVOUR OPERATING CORPORATION

LOCATION DRAWING

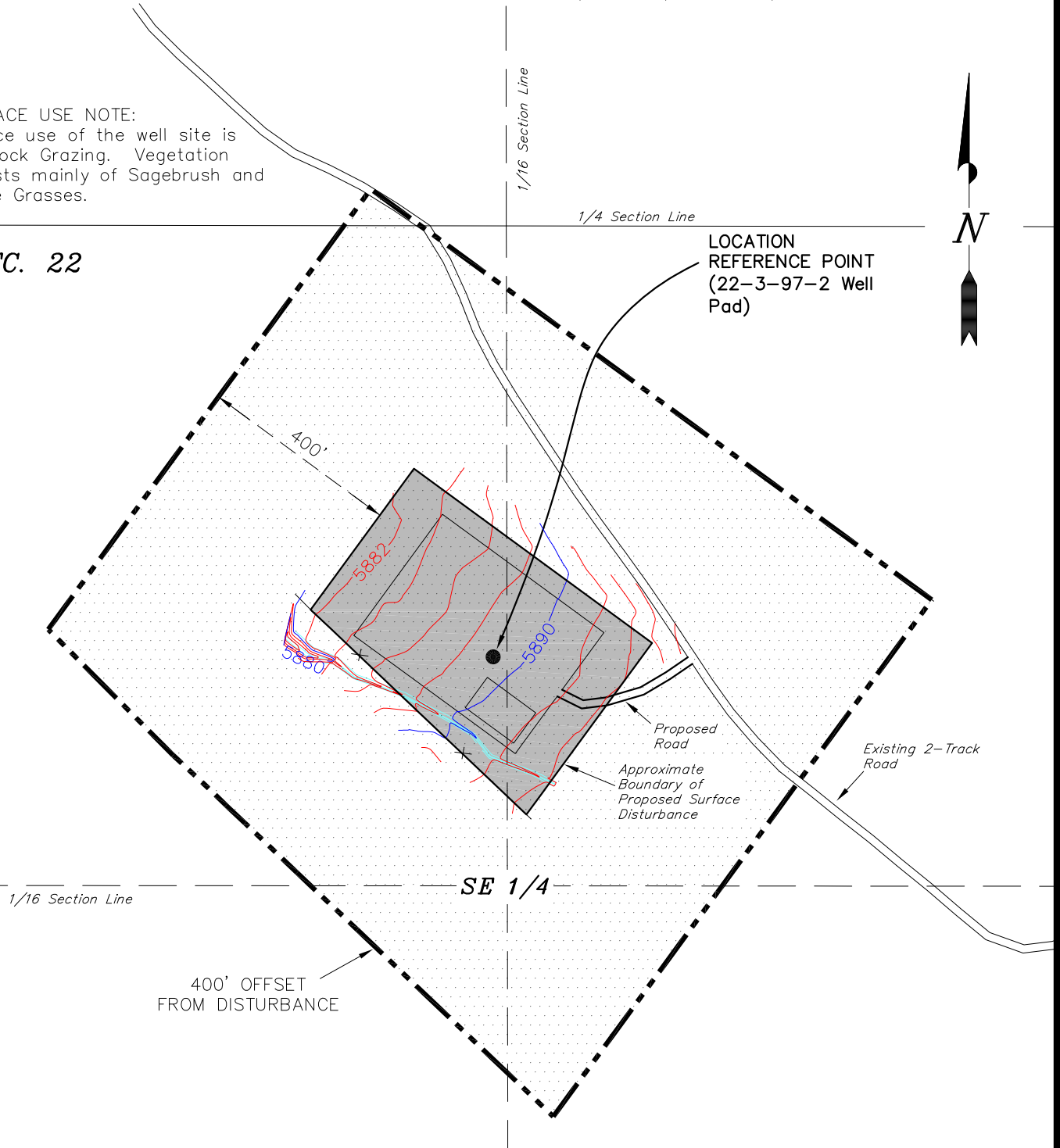
WILEY 22-3-97-2

Pad Location: NWSE SECTION 22, T3N, R97W, 6th P.M.

SURFACE USE NOTE:

Surface use of the well site is Livestock Grazing. Vegetation consists mainly of Sagebrush and Native Grasses.

SEC. 22



Distances from Well Head

WELL	BUILDING	ABOVE GROUND UTILITY	PUBLIC ROAD	RAILROAD
22-3	S88°W 4625'	S52°W 29388'	S25°E 12197'	S16°E 51 MILES



SURVEYED BY: K.S. DATE SURVEYED: 08-27-12
 DRAWN BY: M.W. DATE DRAWN: 10-02-12
 SCALE: 1" = 300' REVISED:

Tri State
 Land Surveying, Inc.
 180 NORTH VERNAL AVE. VERNAL, UTAH 84078
 (435) 781-2501

SHEET
2