

---

**WPX ENERGY ROCKY MOUNTAIN LLC-EBUS**

---

**KP 14-18  
KOKOPELLI  
Garfield County , Colorado**

**Cement Surface Casing**  
15-Jun-2012

**Post Job Summary**

*The Road to Excellence Starts with Safety*

<b>Sold To #:</b> 300721	<b>Ship To #:</b> 2931528	<b>Quote #:</b>	<b>Sales Order #:</b> 9574237
<b>Customer:</b> WPX ENERGY ROCKY MOUNTAIN LLC-EBUS		<b>Customer Rep:</b> Valad, Gary	
<b>Well Name:</b> KP		<b>Well #:</b> 14-18	<b>API/UWI #:</b> 05-045-20625
<b>Field:</b> KOKOPELLI	<b>City (SAP):</b> SILT	<b>County/Parish:</b> Garfield	<b>State:</b> Colorado
<b>Lat:</b> N 39.522 deg. OR N 39 deg. 31 min. 20.204 secs.		<b>Long:</b> W 107.595 deg. OR W -108 deg. 24 min. 18.929 secs.	
<b>Contractor:</b> NABORS 574		<b>Rig/Platform Name/Num:</b> NABORS 574	
<b>Job Purpose:</b> Cement Surface Casing			
<b>Well Type:</b> Development Well		<b>Job Type:</b> Cement Surface Casing	
<b>Sales Person:</b> MAYO, MARK		<b>Srvc Supervisor:</b> SLAUGHTER, JESSE <b>MBU ID Emp #:</b> 454315	

**Job Personnel**

HES Emp Name	Exp Hrs	Emp #	HES Emp Name	Exp Hrs	Emp #	HES Emp Name	Exp Hrs	Emp #
BURKE, BRENDAN Patrick	9.5	487782	ENGBERG, KEVIN W	9.5	454218	KUKUS, CARLTON Dean	9.5	458577
SLAUGHTER, JESSE Dean	9.5	454315						

**Equipment**

HES Unit #	Distance-1 way	HES Unit #	Distance-1 way	HES Unit #	Distance-1 way	HES Unit #	Distance-1 way
10011429	60 mile	10565341	60 mile	10616651C	60 mile	10973571	60 mile
11259881	60 mile	11808827	60 mile				

**Job Hours**

Date	On Location Hours	Operating Hours	Date	On Location Hours	Operating Hours	Date	On Location Hours	Operating Hours
6-14-2012	6	0	6-15-2012	3.5	3.5			

**TOTAL** Total is the sum of each column separately

**Job**

**Job Times**

Formation Name	Top	Bottom	Called Out	Date	Time	Time Zone
			On Location	14 - Jun - 2012	14:00	MST
<b>Form Type</b>	<b>BHST</b>		<b>Job Started</b>	14 - Jun - 2012	18:00	MST
<b>Job depth MD</b>	1374. ft	<b>Job Depth TVD</b>	1374. ft	<b>Job Started</b>	15 - Jun - 2012	00:40
<b>Water Depth</b>		<b>Wk Ht Above Floor</b>	6. ft	<b>Job Completed</b>	15 - Jun - 2012	01:52
<b>Perforation Depth (MD)</b>	<i>From</i>	<i>To</i>	<b>Departed Loc</b>	15 - Jun - 2012	03:30	MST

**Well Data**

Description	New / Used	Max pressure psig	Size in	ID in	Weight lbm/ft	Thread	Grade	Top MD ft	Bottom MD ft	Top TVD ft	Bottom TVD ft
<b>Sales/Rental/3<sup>rd</sup> Party (HES)</b>											

Description	Qty	Qty uom	Depth	Supplier
PLUG,CMTG, TOP, 9 5/8, HWE, 8.16 MIN/9.06 MA	1	EA		

**Tools and Accessories**

Type	Size	Qty	Make	Depth	Type	Size	Qty	Make	Depth	Type	Size	Qty	Make
Guide Shoe					Packer					Top Plug	9.625	1	HES
Float Shoe					Bridge Plug					Bottom Plug			
Float Collar					Retainer					SSR plug set			
Insert Float										Plug Container	9.625	1	HES
Stage Tool										Centralizers			

**Miscellaneous Materials**

Gelling Agt	Conc	Surfactant	Conc	Acid Type	Qty	Conc %
Treatment Fld	Conc	Inhibitor	Conc	Sand Type	Size	Qty

**Fluid Data**

Stage/Plug #: 1									
Fluid #	Stage Type	Fluid Name	Qty	Qty uom	Mixing Density lbm/gal	Yield ft <sup>3</sup> /sk	Mix Fluid Gal/sk	Rate bbl/min	Total Mix Fluid Gal/sk

Stage/Plug #: 1									
Fluid #	Stage Type	Fluid Name	Qty	Qty uom	Mixing Density lbm/gal	Yield ft <sup>3</sup> /sk	Mix Fluid Gal/sk	Rate bbl/min	Total Mix Fluid Gal/sk
1	Fresh Water	FRESH WATER	20.00	bbl	8.33	.0	.0	4	
2	Lead Cement	VERSACEM (TM) SYSTEM (452010)	205.0	sacks	12.3	2.38	13.75	6	13.75
3	Tail Cement	VERSACEM (TM) SYSTEM (452010)	160.0	sacks	12.8	2.11	11.75	6	11.75
4	Displacement Fluid	FRESH WATER	104.6	bbl	8.34	.0	.0	8	
Calculated Values		Pressures			Volumes				
Displacement	104.6	Shut In: Instant		Lost Returns	NO	Cement Slurry	147	Pad	
Top Of Cement	SURFACE	5 Min		Cement Returns	30	Actual Displacement	104.6	Treatment	
Frac Gradient		15 Min		Spacers	20	Load and Breakdown		Total Job	272
Rates									
Circulating		Mixing	6	Displacement	8	Avg. Job	7		
Cement Left In Pipe	Amount	0 ft	Reason	Shoe Joint					
Frac Ring # 1 @	ID	Frac ring # 2 @	ID	Frac Ring # 3 @	ID	Frac Ring # 4 @	ID		
The Information Stated Herein Is Correct				Customer Representative Signature					

*The Road to Excellence Starts with Safety*

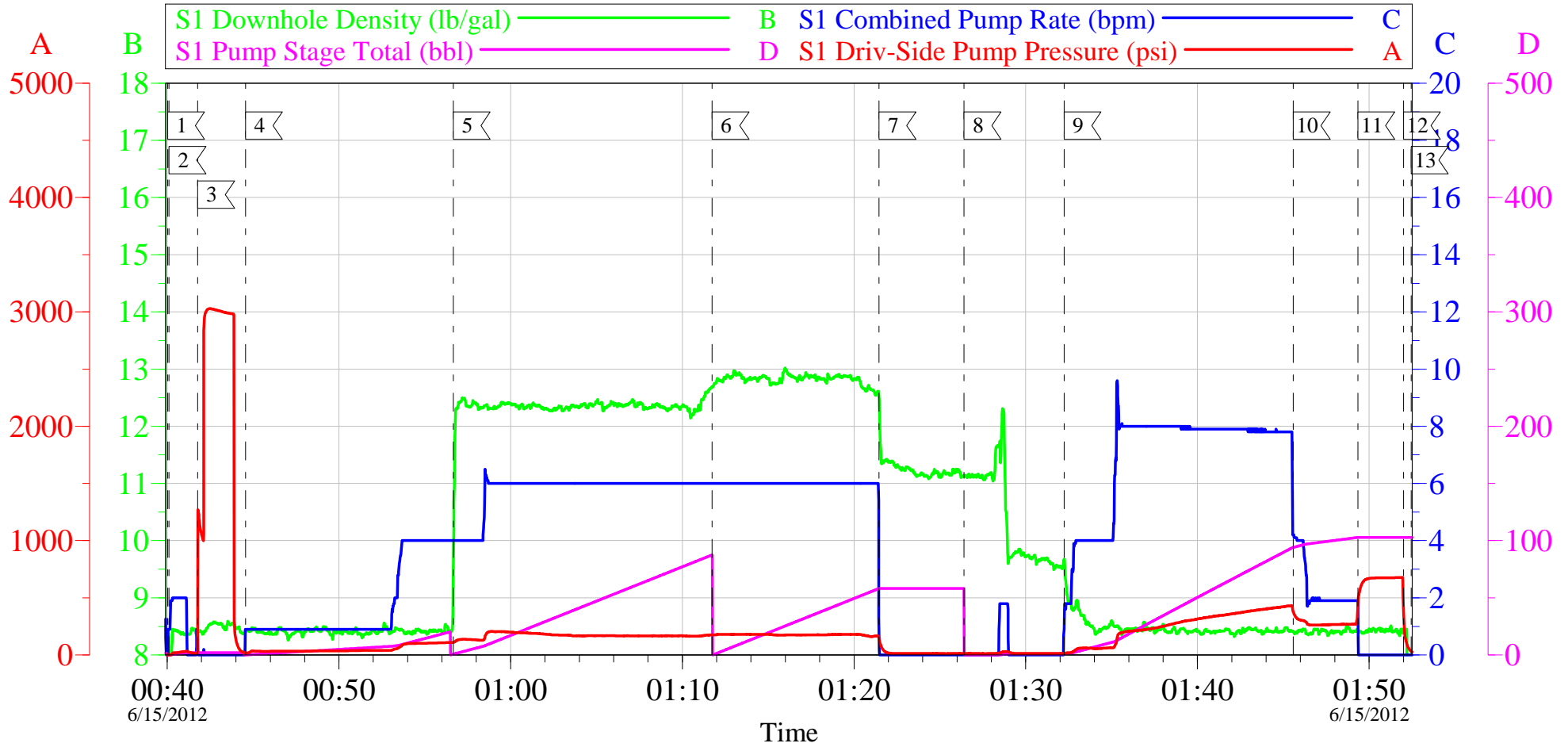
<b>Sold To #:</b> 300721	<b>Ship To #:</b> 2931528	<b>Quote #:</b>	<b>Sales Order #:</b> 9574237
<b>Customer:</b> WPX ENERGY ROCKY MOUNTAIN LLC-EBUS		<b>Customer Rep:</b> Valad, Gary	
<b>Well Name:</b> KP		<b>Well #:</b> 14-18	<b>API/UWI #:</b> 05-045-20625
<b>Field:</b> KOKOPELLI	<b>City (SAP):</b> SILT	<b>County/Parish:</b> Garfield	<b>State:</b> Colorado
<b>Legal Description:</b>			
<b>Lat:</b> N 39.522 deg. OR N 39 deg. 31 min. 20.204 secs.		<b>Long:</b> W 107.595 deg. OR W -108 deg. 24 min. 18.929 secs.	
<b>Contractor:</b> NABORS 574		<b>Rig/Platform Name/Num:</b> NABORS 574	
<b>Job Purpose:</b> Cement Surface Casing			<b>Ticket Amount:</b>
<b>Well Type:</b> Development Well		<b>Job Type:</b> Cement Surface Casing	
<b>Sales Person:</b> MAYO, MARK		<b>Srvc Supervisor:</b> SLAUGHTER, JESSE	<b>MBU ID Emp #:</b> 454315

Activity Description	Date/Time	Cht #	Rate bbl/min	Volume bbl		Pressure psig		Comments
				Stage	Total	Tubing	Casing	
Call Out	06/14/2012 14:00							TD 1380 FT, TP 1374 FT, SHOE 44.47 FT, CSG 9 5/8 IN 32.3 LB/FT, HOLE 13 1/2 IN, MUD WT 10.2 PPG
Pre-Convoy Safety Meeting	06/14/2012 15:50							WITH ALL HES PERSONNEL
Crew Leave Yard	06/14/2012 16:00							
Arrive At Loc	06/14/2012 18:00							RIG WAS DRILLING UPON HES ARRIVAL
Assessment Of Location Safety Meeting	06/14/2012 23:30							WITH ALL HES PERSONNEL
Other	06/14/2012 23:40							SPOT EQUIPMENT
Pre-Rig Up Safety Meeting	06/14/2012 23:50							WITH ALL HES PERSONNEL
Rig-Up Equipment	06/15/2012 00:00							
Pre-Job Safety Meeting	06/15/2012 00:30							WITH ALL PERSONNEL ON LOCATION
Start Job	06/15/2012 00:40							
Other	06/15/2012 00:40		2	2			29.0	FILL LINES WITH FRESH WATER
Test Lines	06/15/2012 00:41							TESTED LINES TO 2834 PSI PRESSURE HOLDING
Pump Spacer 1	06/15/2012 00:44		4	20			110.0	FRESH WATER
Pump Lead Cement	06/15/2012 00:56		5	86.9			177.0	205 SKS AT 12.3 PPG, 2.38 FT3/SK, 13.75 GAL/SK
Pump Tail Cement	06/15/2012 01:11		6	60.1			167.0	160 SKS AT 12.8 PPG, 2.11 FT3/SK, 11.75 GAL/SK

Activity Description	Date/Time	Cht #	Rate bbl/min	Volume bbl		Pressure psig		Comments
				Stage	Total	Tubing	Casing	
Shutdown	06/15/2012 01:21							
Drop Top Plug	06/15/2012 01:26							PLUG LAUNCHED
Pump Displacement	06/15/2012 01:32		8	94.6			400.0	FRESH WATER
Slow Rate	06/15/2012 01:45		2	10			260.0	SLOW RATE 10 BBLs PRIOR TO CALCULATED DISPLACEMENT
Bump Plug	06/15/2012 01:49		2		104.6		690.0	PLUG BUMPED
Check Floats	06/15/2012 01:52							FLOATS HOLDING. HES RETURNED 1 BBL H2O TO PUMP
End Job	06/15/2012 01:52							PIPE WAS STATIC DURING JOB, GOOD CIRCULATION THROUGHOUT JOB. HES RETURNED 30 BBL CEMENT TO SURFACE
Pre-Rig Down Safety Meeting	06/15/2012 02:00							WITH ALL HES PERSONNEL
Rig-Down Equipment	06/15/2012 02:10							
Pre-Convoy Safety Meeting	06/15/2012 03:20							WITH ALL HES PERSONNEL
Crew Leave Location	06/15/2012 03:30							
Comment	06/15/2012 03:31							THANK YOU FOR USING HALLIBURTON CEMENT DEPARTMENT. JESSE SLAUGHTER AND CREW.

# WPX KP 14-18

## 9 5/8 SURFACE

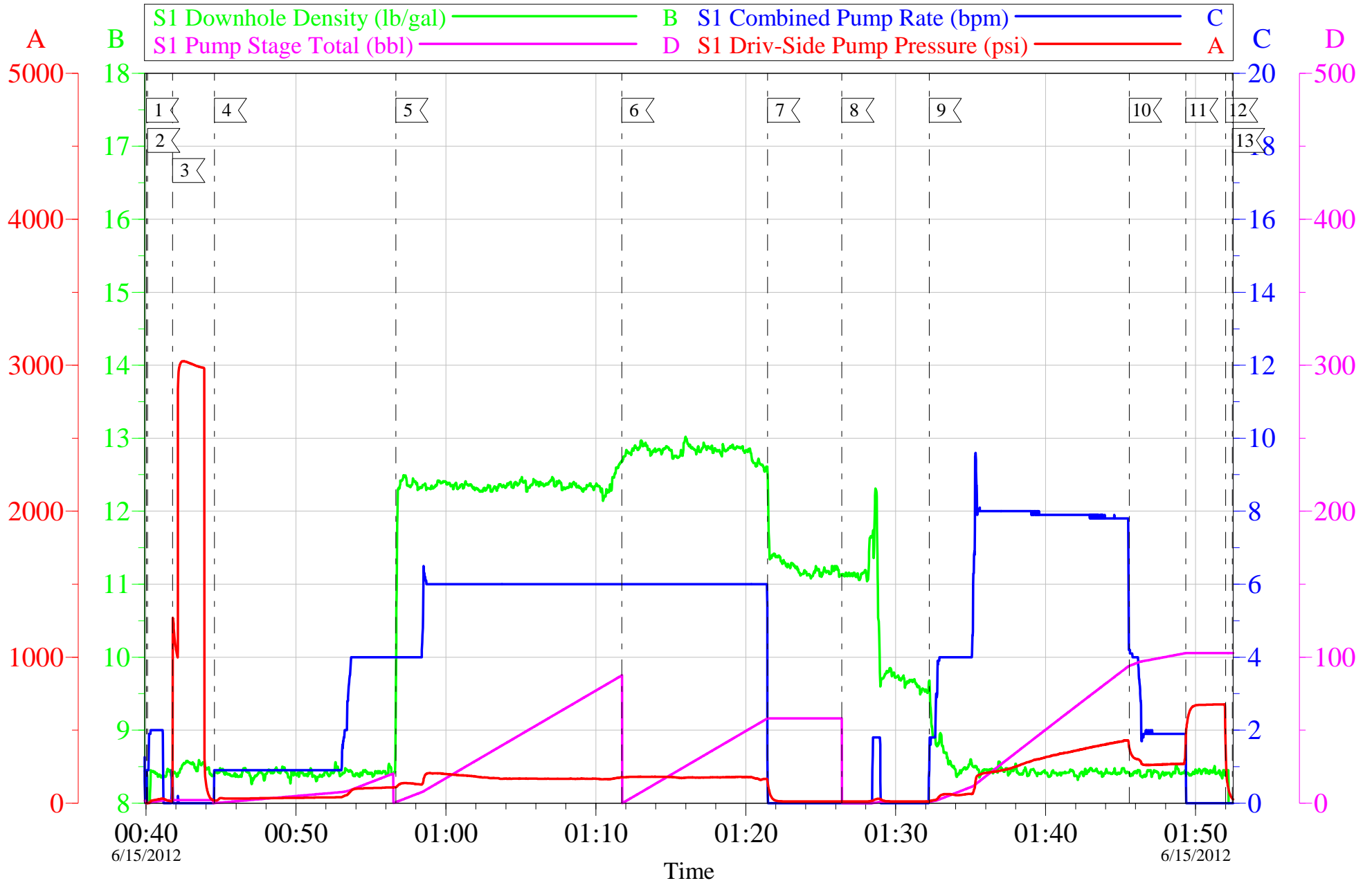


1	START JOB	00:40:01	2	PRIME LINES	00:40:06	3	TEST LINES	00:41:46
4	PUMP H2O SPACER	00:44:33	5	PUMP LEAD CEMENT	00:56:39	6	PUMP TAIL CEMENT	01:11:44
7	SHUTDOWN	01:21:27	8	DROP TOP PLUG	01:26:24	9	PUMP DISPLACEMENT	01:32:14
10	SLOW RATE	01:45:35	11	BUMP PLUG	01:49:21	12	CHECK FLOATS	01:52:00
13	END JOB	01:52:27						

Customer: WPX	Job Date: 14-Jun-2012	Sales Order #: 9574237
Well Description: KP 14-18	Job Type: SURFACE	ADC Used: YES
Customer Rep: GARY VALAD	Cement Supervisor: JESSE SLAUGHTER	Elite #: CARL KUKUS

# WPX KP 14-18

## 9 5/8 SURFACE



Customer: WPX	Job Date: 14-Jun-2012	Sales Order #: 9574237
Well Description: KP 14-18	Job Type: SURFACE	ADC Used: YES
Customer Rep: GARY VALAD	Cement Supervisor: JESSE SLAUGHTER	Elite #4: CARL KUKUS

# HALLIBURTON

## Water Analysis Report

Company: WILLIAMS PRODUCTION

Date: 6/14/2012

Submitted by: JESSE SLAUGHTER

Date Rec.: \_\_\_\_\_

Attention: LAB

S.O.# 9574237

Lease KP

Job Type: SURFACE

Well # 14-18

Specific Gravity	<i>MAX</i>	<b>1</b>
pH	<i>8</i>	<b>6</b>
Potassium (K)	<i>5000</i>	<b>250 Mg / L</b>
Calcium (Ca)	<i>500</i>	<b>120 Mg / L</b>
Iron (FE2)	<i>300</i>	<b>0 Mg / L</b>
Chlorides (Cl)	<i>3000</i>	<b>0 Mg / L</b>
Sulfates (SO <sub>4</sub> )	<i>1500</i>	<b>UNDER 200 Mg / L</b>
Chlorine (Cl <sub>2</sub> )		<b>0 Mg / L</b>
Temp	<i>40-80</i>	<b>75 Deg</b>
Total Dissolved Solids		<b>200 Mg / L</b>

Respectfully: JESSE SLAUGHTER

Title: CEMENTING SUPERVISOR

Location: Grand Junction, CO

**NOTICE:**

This report is limited to the described sample tested. Any person using or relying on this report agrees that Halliburton shall not be liable for any loss or damage whether due to act or omission resulting from such report or its

<b>Sales Order #:</b> 9574237	<b>Line Item:</b> 10	<b>Survey Conducted Date:</b> 6/15/2012
<b>Customer:</b> WPX ENERGY ROCKY MOUNTAIN LLC-EBUS		<b>Job Type (BOM):</b> CMT SURFACE CASING BOM
<b>Customer Representative:</b> GARY VALAD		<b>API / UWI: (leave blank if unknown)</b> 05-045-20625
<b>Well Name:</b> KP		<b>Well Number:</b> 14-18
<b>Well Type:</b> Development Well	<b>Well Country:</b> United States of America	
<b>H2S Present:</b> No	<b>Well State:</b> Colorado	<b>Well County:</b> Garfield

Dear Customer,

We hope that you were satisfied with the service quality of this job performed by Halliburton. It is the aim of our management and service personnel to deliver equipment and service of a standard unmatched in the service sector of the energy industry.

Please take the time to let us know if our performance met with your satisfaction. Please be as critical as possible to ensure we constantly improve our service. Your comments are of great value to us and are intended for the exclusive use of Halliburton.

### CUSTOMER SATISFACTION SURVEY

CATEGORY	CUSTOMER SATISFACTION RESPONSE	
Survey Conducted Date	The date the survey was conducted	6/15/2012
Survey Interviewer	The survey interviewer is the person who initiated the survey.	JESSE SLAUGHTER (HB21762)
Customer Participation	Did the customer participate in this survey? (Y/N)	Yes
Customer Representative	Enter the Customer representative name	GARY VALAD
HSE	Was our HSE performance satisfactory? Circle Y or N	Yes
Equipment	Were you satisfied with our Equipment? Circle Y or N	Yes
Personnel	Were you satisfied with our people? Circle Y or N	Yes
Customer Comment	Customer's Comment	GOOD JOB

<b>CUSTOMER SIGNATURE</b>
---------------------------

<b>Sales Order #:</b> 9574237	<b>Line Item:</b> 10	<b>Survey Conducted Date:</b> 6/15/2012
<b>Customer:</b> WPX ENERGY ROCKY MOUNTAIN LLC-EBUS		<b>Job Type (BOM):</b> CMT SURFACE CASING BOM
<b>Customer Representative:</b> GARY VALAD		<b>API / UWI: (leave blank if unknown)</b> 05-045-20625
<b>Well Name:</b> KP		<b>Well Number:</b> 14-18
<b>Well Type:</b> Development Well	<b>Well Country:</b> United States of America	
<b>H2S Present:</b> No	<b>Well State:</b> Colorado	<b>Well County:</b> Garfield

### KEY PERFORMANCE INDICATORS

General	
<b>Survey Conducted Date</b>	6/15/2012
The date the survey was conducted	

Cementing KPI Survey	
<b>Type of Job</b>	0
Select the type of job. (Cementing or Non-Cementing)	
<b>Select the Maximum Deviation range for this Job</b>	Vertical
What is the highest deviation for the job you just completed? This may not be the maximum well deviation.	
<b>Total Operating Time (hours)</b>	3.5
Total Operating Hours Including Rig-up, Pumping, Rig-down. Enter in decimal format.	
<b>HSE Incident, Accident, Injury</b>	No
HSE Incident, Accident, Injury. This should be recordable incidents only.	
<b>Was the job purpose achieved?</b>	Yes
Was the job delivered correctly as per customer agreed design?	
<b>Operating Hours (Pumping Hours)</b>	1.5
Total number of hours pumping fluid on this job. Enter in decimal format.	
<b>Customer Non-Productive Rig Time (hrs)</b>	0
Lost time due to Halliburton in the start, execution, or completion of an ordered service or product, or delays in a follow-on service. Enter in decimal format. 0 if none.	
<b>Type of Rig Classification Job Was Performed</b>	Drilling Rig (Portable)
Type Of Rig (classification) Job Was Performed On	
<b>Number Of JSAs Performed</b>	6
Number Of Jsas Performed	
<b>Number of Unplanned Shutdowns</b>	0
Unplanned shutdown is when injection stops for any period of time.	
<b>Was this a Primary Cement Job (Yes / No)</b>	Yes

<b>Sales Order #:</b> 9574237	<b>Line Item:</b> 10	<b>Survey Conducted Date:</b> 6/15/2012
<b>Customer:</b> WPX ENERGY ROCKY MOUNTAIN LLC-EBUS		<b>Job Type (BOM):</b> CMT SURFACE CASING BOM
<b>Customer Representative:</b> GARY VALAD		<b>API / UWI: (leave blank if unknown)</b> 05-045-20625
<b>Well Name:</b> KP		<b>Well Number:</b> 14-18
<b>Well Type:</b> Development Well	<b>Well Country:</b> United States of America	
<b>H2S Present:</b> No	<b>Well State:</b> Colorado	<b>Well County:</b> Garfield

Primary Cement Job= Casing job, Liner job, or Tie-back job.	
<b>Did We Run Wiper Plugs?</b> Did We Run Top And Bottom Casing Wiper Plugs?	Top
<b>Mixing Density of Job Stayed in Designed Density Range (0-100%)</b> Density Range defined as +/- .20 ppg. Calculation: Total BBLs cement mixed at designed density divided by total BBLs of cement multiplied by 100	98
<b>Was Automated Density Control Used?</b> Was Automated Density Control (ADC) Used ?	Yes
<b>Pump Rate (percent) of Job Stayed At Designed Pump Rate</b> Pump Rate range defined as +/- 1bbl/min. Calculation: Total BBLs of fluid pumped at the designed rate divided by Total BBLs of fluid pumped, multiplied by 100	98
<b>Nbr of Remedial Sqz Jobs Rqd - Competition</b> Number Of Remedial Squeeze Jobs Required After Primary Job Performed By Competition	0
<b>Nbr of Remedial Plug Jobs Rqd - HES</b> Number Of Remedial Plug Jobs Needed After Primary Plug Pumped By HES	0
<b>Nbr of Remedial Sqz Jobs Rqd - HES</b> Number Of Remedial Squeeze Jobs Required After Primary Job Performed By HES	0