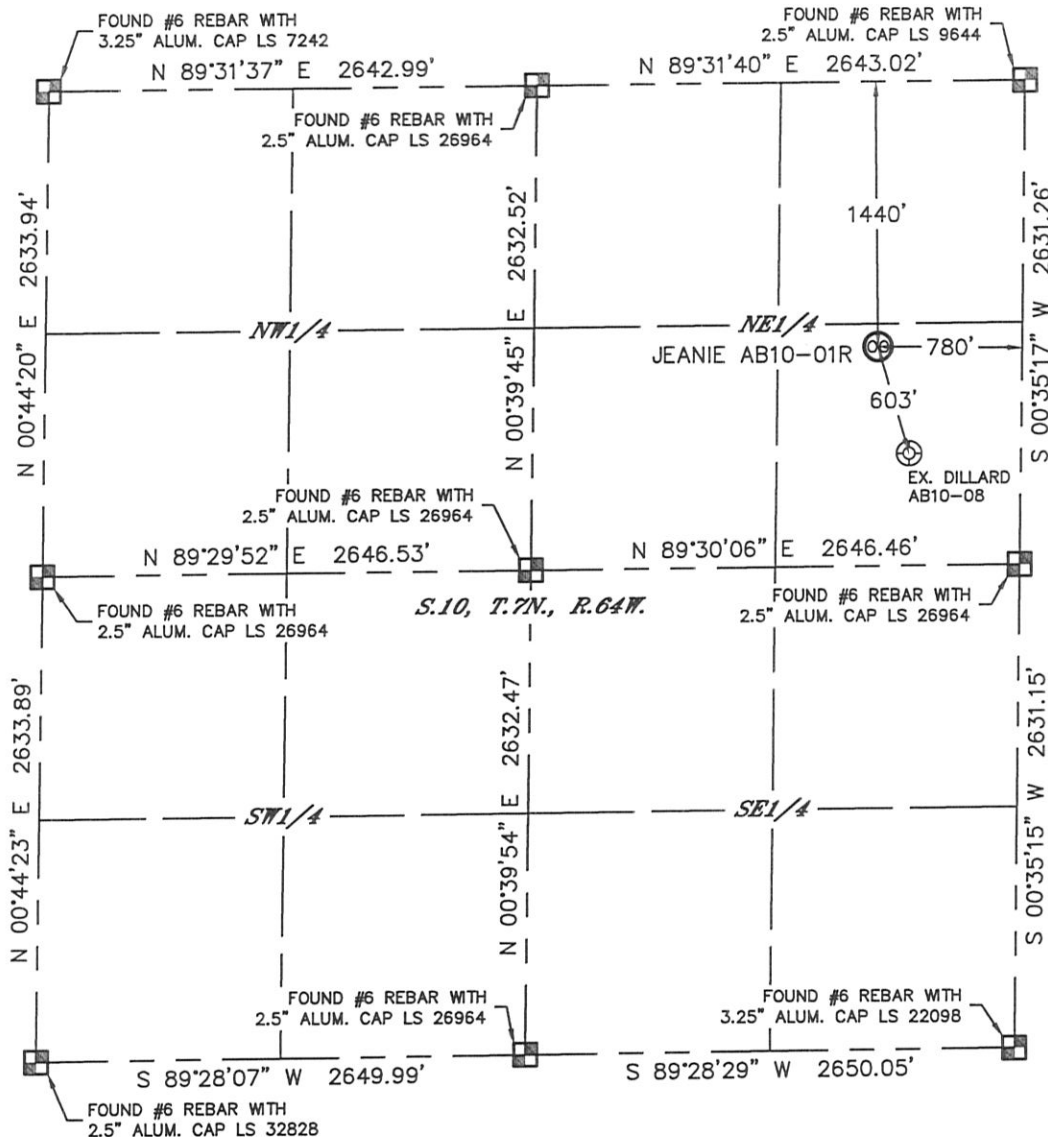


Lat40°, Inc. 1635 Foxtrail Drive, Suite 325 Loveland, CO 970-776-3321

WELL LOCATION CERTIFICATE

SECTION: 10
TOWNSHIP: 7N
RANGE: 64W

THIS MAP DOES NOT REPRESENT A BOUNDARY SURVEY



In accordance with a request from Jim Curry with Noble Energy Inc., Lat40°, Inc. has determined the surface location of the JEANIE AB10-01R to be 1440' from the NORTH line and 780' from the EAST line as measured at right angles from the section lines of Section 10, Township 7 North, Range 64 West of the Sixth Principal Meridian, County of Weld, State of Colorado.

I hereby state that this Well Location Certificate was prepared by me, or under my direct supervision, that the fieldwork was completed on 9/6/2012, for and on behalf of Noble Energy Inc. That this is not a Land Survey Plat or an Improvement Survey Plat, and that it is not to be relied upon for establishment of fence, building, or other future improvement lines.

NOTE:

- 1) Bearings shown are Grid Bearings of the Colorado State Plane Coordinate System, North Zone, North American Datum 1983/2007. The lineal dimensions as contained herein are based upon the "U.S. Survey Foot."
- 2) Ground elevations are based on an observed GPS elevation (NAVD 1988 DATUM).
- 3) NEAREST EXISTING WELL: DILLARD AB10-08, 603'
- 4) IMPROVEMENTS: See LOCATION DRAWING for all visible improvements within 400' of disturbed area.
- 5) SURFACE USE: RANGELAND
- 6) INSTRUMENT OPERATOR: WYATT HALL

SURFACE LOCATION

LAT: 40.59093°N
LONG: 104.52866°W
PDOP: 1.4
ELEV: 4832'
1/4, 1/4: SE1/4NE1/4
NEAREST PROPERTY LINE: 780' EAST

NOTE

According to Colorado law, you must commence any legal action based upon any defect in this W.L.C. within three years after you discover such defect. In no event, may any action based upon any defect in this survey be commenced more than ten years after the date of the certificate shown hereon. (13-80-105 C.R.S.)

LEGEND

- = ALIQUOT MONUMENT AS DESCRIBED
○ = CALCULATED POSITION

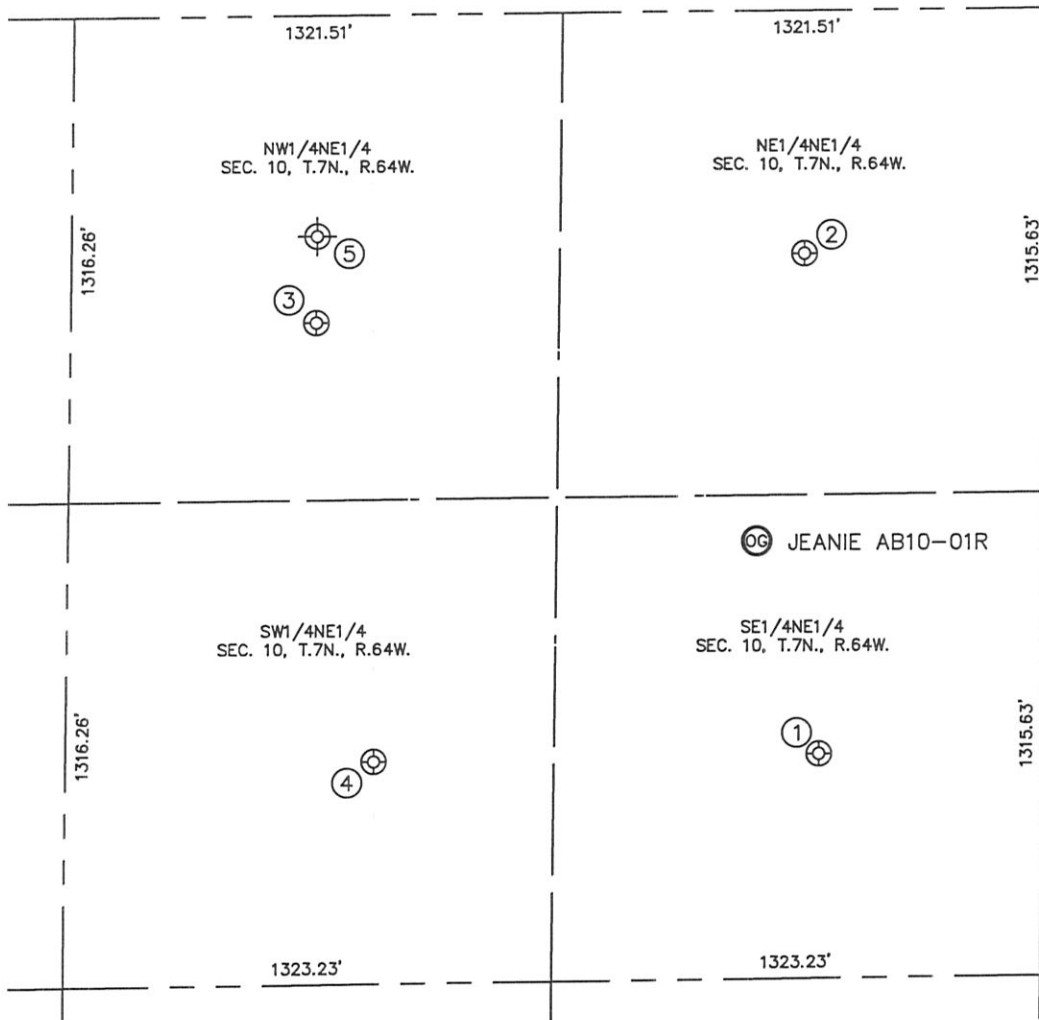


Brian T. Brinkman—On behalf of Lat40°, Inc.
Colorado Licensed Professional Land Surveyor No. 38175
DATE: 9/24/2012
PROJECT#: 2012123

SITE SKETCH

JEANIE AB10-01R

SECTION: 10
TOWNSHIP: 7N
RANGE: 64W



①
DILLARD AB10-08
SE1/4NE1/4
2021' FNL
606' FEL
LAT-40.58933°N
LONG-104.52808°W
PDOP: 1.8
ELEV: 4831'

②
DILLARD AB10-01
NE1/4NE1/4
660' FNL
660' FEL
LAT-40.59307°N
LONG-104.52817°W
PDOP: 2.1
ELEV: 4835'

③
DILLARD AB10-02
NW1/4NE1/4
835' FNL
1980' FEL
LAT-40.59260°N
LONG-104.53293°W
PDOP: 1.8
ELEV: 4836'

④
DILLARD AB10-07
SW1/4NE1/4
2027' FNL
1811' FEL
LAT-40.58932°N
LONG-104.53242°W
PDOP: 2.0
ELEV: 4832'

⑤
GROVES-FA 31-10
Plugged & Abandoned
NW1/4NE1/4 (COGCC)
660' FNL (COGCC)
1980' FEL (COGCC)
LAT-40.593043°N (COGCC)
LONG-104.532976°W (COGCC)
PDOP: N/A
ELEV: 4847' (COGCC)

