

Northern Region Drilling

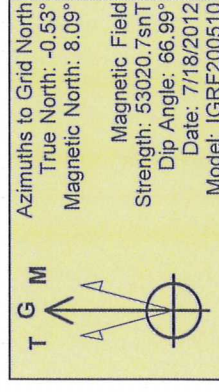
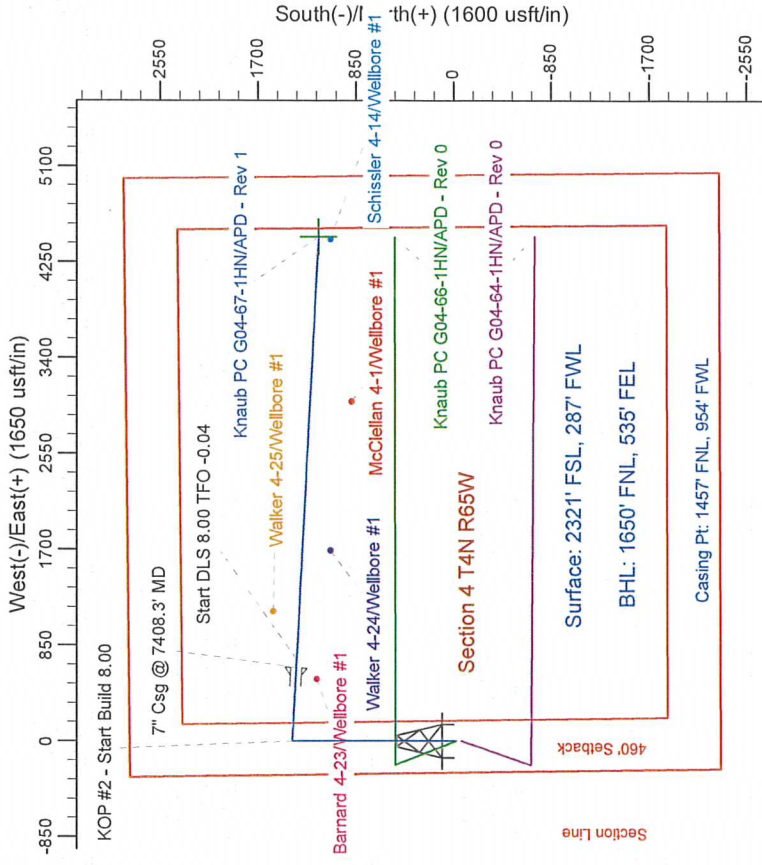
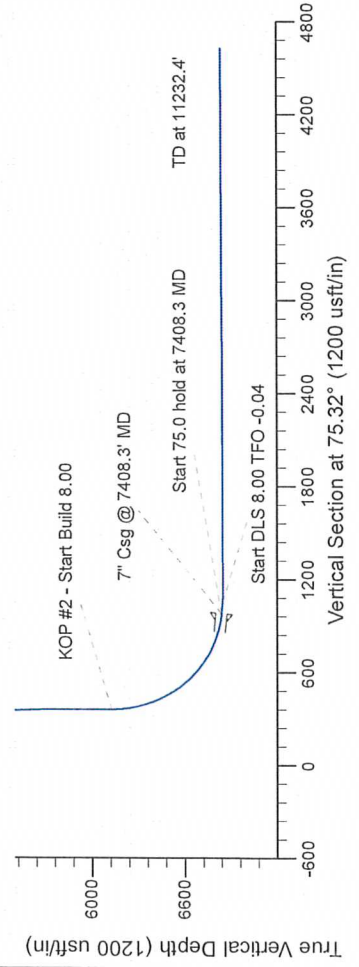
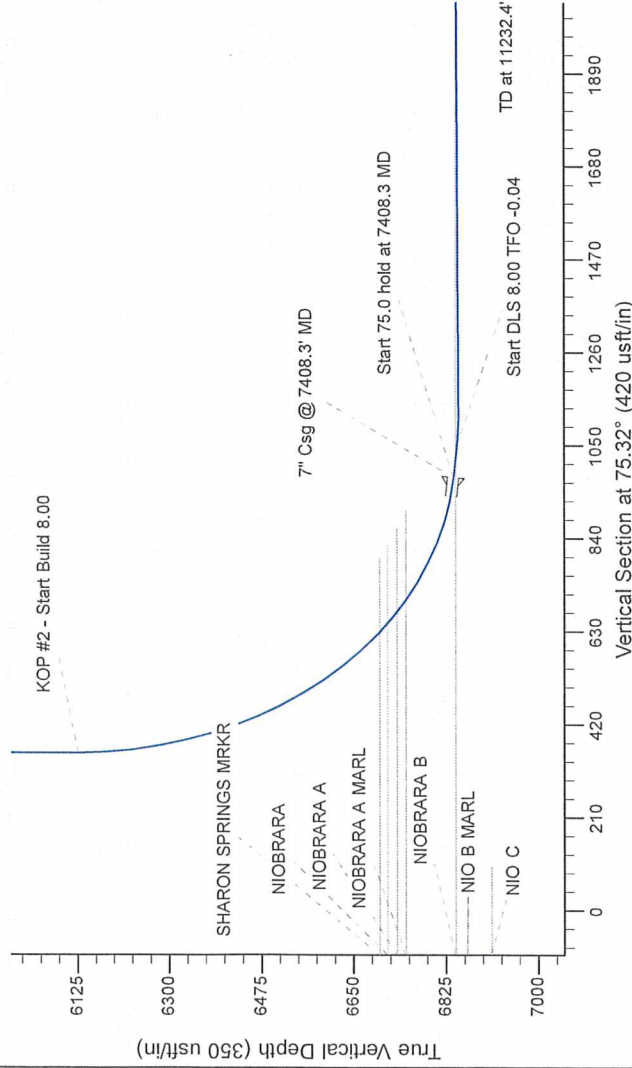
Project: Wattenberg Field
 Site: G (Sec 4-T4N-R65W) Weld County, CO
 Well: Knaub PC G04-67-1HN
 Wellbore: Original Drilling
 Design: APD - Rev 1

Geodetic System: US State Plane 1983
 Datum: North American Datum 1983
 Ellipsoid: GRS 1980
 Zone: Colorado Northern Zone
 System Datum: Mean Sea Level

SECTION DETAILS

Sec	MD	Inc	Azi	TVD	+N/-S	+E/-W	Dleg	TFace	VFace	Target
1	0.0	0.00	0.00	0.0	0.0	0.0	0.00	0.00	0.0	
2	1000.0	0.00	0.00	1000.0	0.0	0.0	0.00	0.00	0.0	
3	1759.6	18.99	0.00	1745.7	124.7	0.0	0.00	0.00	31.6	
4	5295.5	18.99	0.00	5089.3	1275.3	0.0	2.50	0.00	323.2	
5	6055.1	0.00	0.00	5895.0	1400.0	0.0	0.00	0.00	354.8	
6	5345.8	0.00	0.00	5125.7	1400.0	0.0	0.00	0.00	354.8	
7	7408.3	85.00	82.93	6894.2	1366.6	652.9	0.00	0.00	92.93	
8	7538.2	90.00	82.93	6848.4	1352.8	722.3	8.00	0.00	117.0	
9	7538.2	90.00	82.93	6848.4	1352.8	722.3	8.00	0.00	117.0	
10	11232.4	90.20	82.93	6895.9	1171.3	4471.7	0.00	0.00	4622.5	

Knaub PC G04-67-1HN BHL 1650'FNL, 535'FEL



WELL DETAILS: Knaub PC G04-67-1HN			
North	Ground Level	Latitude	Longitude
1368037.72	4618.0	3229500.29	-104.676680
Plan: APD - Rev 1 (Knaub PC G04-67-1HN/Original Drilling)			
Created By: Carrie Willers		Date: 11.09. July 24 2012	
Checked:		Date:	
Reviewed:		Date:	
Approved:		Date:	