

T5N, R90W, 5th. P.M.

SWEPI LP

1914 Brass Cap,
2.0' High, Pile of
Stones, S/E/W
Lat: 40.349025°
Long: 107.509222°

1914 Brass Cap,
2.3' High, Pile of
Stones
Lat: 40.349286°
Long: 107.489947°

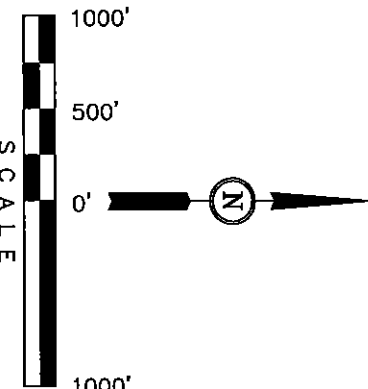
Well location, HERRING DRAW #3-33 (SURFACE LOCATION), located as shown in the NW 1/4 NW 1/4 of Section 33, T5N, R90W, 6th. P.M., Moffat County, Colorado.

BASIS OF ELEVATION

SPOT ELEVATION AT THE NORTHEAST CORNER OF SECTION 31, T5N, R90W, 6th P.M. TAKEN FROM THE HAMILTON QUADRANGLE, COLORADO, MOFFAT COUNTY, 7.5 MINUTE QUAD (TOPOGRAPHIC MAP) PUBLISHED BY THE UNITED STATES DEPARTMENT OF THE INTERIOR, GEOLOGICAL SURVEY. SAID ELEVATION IS MARKED AS BEING 6664 FEET.

BASIS OF BEARINGS

BASIS OF BEARINGS IS A G.P.S. OBSERVATION.



CERTIFICATE

THIS IS TO CERTIFY THAT THE ABOVE PLATS, RECORDS, FIELD NOTES OF ACTUAL SURVEYS MADE BY ME OR UNDER MY SUPERVISION AND THAT THE SAME ARE TRUE AND CORRECT TO THE BEST OF MY KNOWLEDGE AND BELIEF.

REGISTERED LAND SURVEYOR
STATE OF COLORADO
No. 10000
Exp. 08-17-12

UNTAR ENGINEERING & LAND SURVEYING

86 SOUTH 200 EAST - VERNAL, UTAH 84078

(435) 789-1017

SCALE 1" = 1000' DATE SURVEYED: 08-17-12 DATE DRAWN: 08-17-12

PARTY D.N., Z.L. REFERENCES G.L.O. PLAT

WEATHER HOT FILE SWEPI LP

LEGEND:

- = 90° SYMBOL
- = PROPOSED WELL HEAD.
- ▲ = SECTION CORNERS LOCATED.

N00°08'29"E - 5339.80' (Meas.)

N88°56'20"E - 2695.12' (Meas.)

N88°59'05"E - 2680.31' (Meas.)

S01°22'W - 5372.40' (G.L.O.)

N89°40'08"E - 2642.62' (Meas.)

S89°30'W - 2628.78' (G.L.O.)

Set Marked Stone
Lat: 40.34372°
Long: 107.509275°

1908 Brass Cap,
1.0' High
Lat: 40.34411°
Long: 107.499797°

1914 Brass Cap,
1.0' High, N/S
Fence, Cornerline
Post
Lat: 40.349158°
Long: 107.499558°

HERRING DRAW #3-33
Elev. Ungraded Ground = 6804'

547°29'02"W - 4349.74'
(To Bottom Hole)

NOTE:
THE PROPOSED BOTTOM HOLE FOR THIS WELL IS LOCATED IN THE SW 1/4 SE 1/4 OF SECTION 32, T5N, R90W, 5th. P.M. AT A DISTANCE OF 1257' FNL 2183° FEL IT BEARS 547°29'02"W 4349.74' FROM THE PROPOSED WELL HEAD.

NOTE:
SEE ADDENDUM TO LEGAL PLAT FOR EXISTING IMPROVEMENTS WITHIN 400' OF THE PROPOSED WELL DISTURBANCE.

T5N, R90W, 5th. P.M.

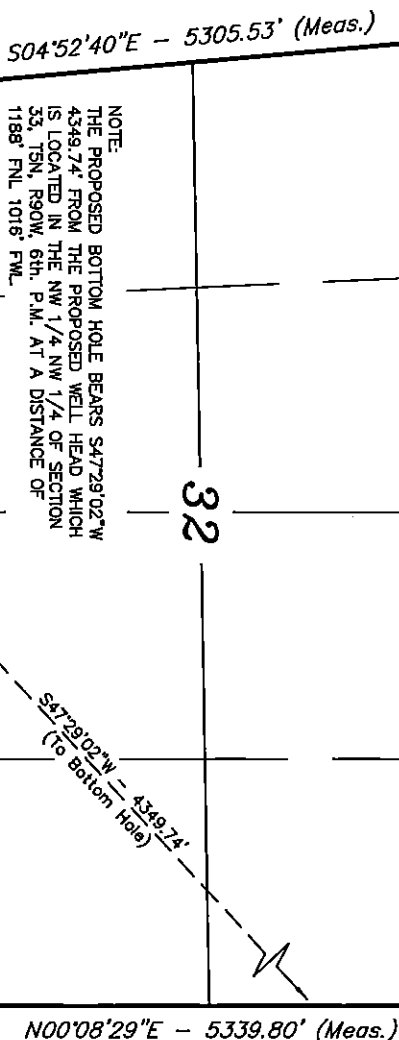
SWEP1 LP

Well location, HERRING DRAW #3-33 (TARGET BOTTOM HOLE), located as shown in the SW 1/4 SE 1/4 of Section 32, T5N, R90W, 6th. P.M., Moffat County, Colorado.
BASIS OF ELEVATION

SPOT ELEVATION AT THE NORTHEAST CORNER OF SECTION 31, T5N, R90W, 6th P.M. TAKEN FROM THE HAMILTON QUADRANGLE, COLORADO, MOFFAT COUNTY, 7.5 MINUTE QUAD (TOPOGRAPHIC MAP) PUBLISHED BY THE UNITED STATES DEPARTMENT OF THE INTERIOR, GEOLOGICAL SURVEY. SAID ELEVATION IS MARKED AS BEING 6664 FEET.

BASIS OF BEARINGS

BASIS OF BEARINGS IS A G.P.S. OBSERVATION.



NOTE:
THE PROPOSED BOTTOM HOLE BEARS S47°29'02"W 4349.74' FROM THE PROPOSED WELL HEAD WHICH IS LOCATED IN THE NW 1/4 NW 1/4 OF SECTION 33, T5N, R90W, 6th. P.M. AT A DISTANCE OF 1188' FNL 1016' FWL.

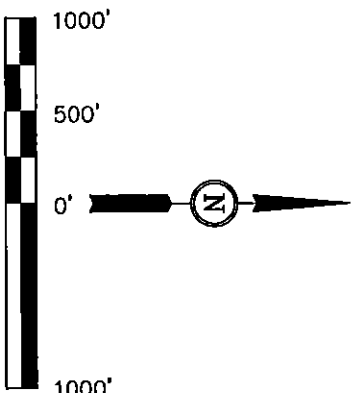
1914 Brass Cap, 0.2' High, Pile of Stones, Steel Post
Lat: 40.346753
Long: 107.528425

1914 Brass Cap, 0.4' High, E/W Fence
Lat: 40.346811
Long: 107.518828

1914 Brass Cap, 0.7' Below Ground
Lat: 40.334247
Long: 107.528808

1914 Brass Cap, 2.5' High, Steel Post
Lat: 40.334286
Long: 107.518881

Set Marked Stone
Lat: 40.334372
Long: 107.509225



CERTIFICATE

THIS IS TO CERTIFY THAT THE ABOVE PLAT WAS PREPARED FROM FIELD NOTES OF ACTUAL SURVEYS MADE BY ME OR UNDER MY SUPERVISION AND THAT THE SAME ARE TRUE AND CORRECT TO THE BEST OF MY KNOWLEDGE AND BELIEF.

REGISTERED LAND SURVEYOR
REGISTRATION NO. 10722
STATE OF COLORADO
08-17-12

UTAH ENGINEERING & LAND SURVEYING
85 SOUTH 200 EAST - VERNAL, UTAH 84078
(435) 789-1017

SCALE 1" = 1000'

DATE SURVEYED: 08-17-12 DATE DRAWN: 08-17-12

PARTY D.N. Z.L.

REFERENCES G.L.O. PLAT

WEATHER HOT

FILE SWEP1 LP

LEGEND:

— = 90° SYMBOL

● = PROPOSED WELL HEAD.

▲ = SECTION CORNERS LOCATED.

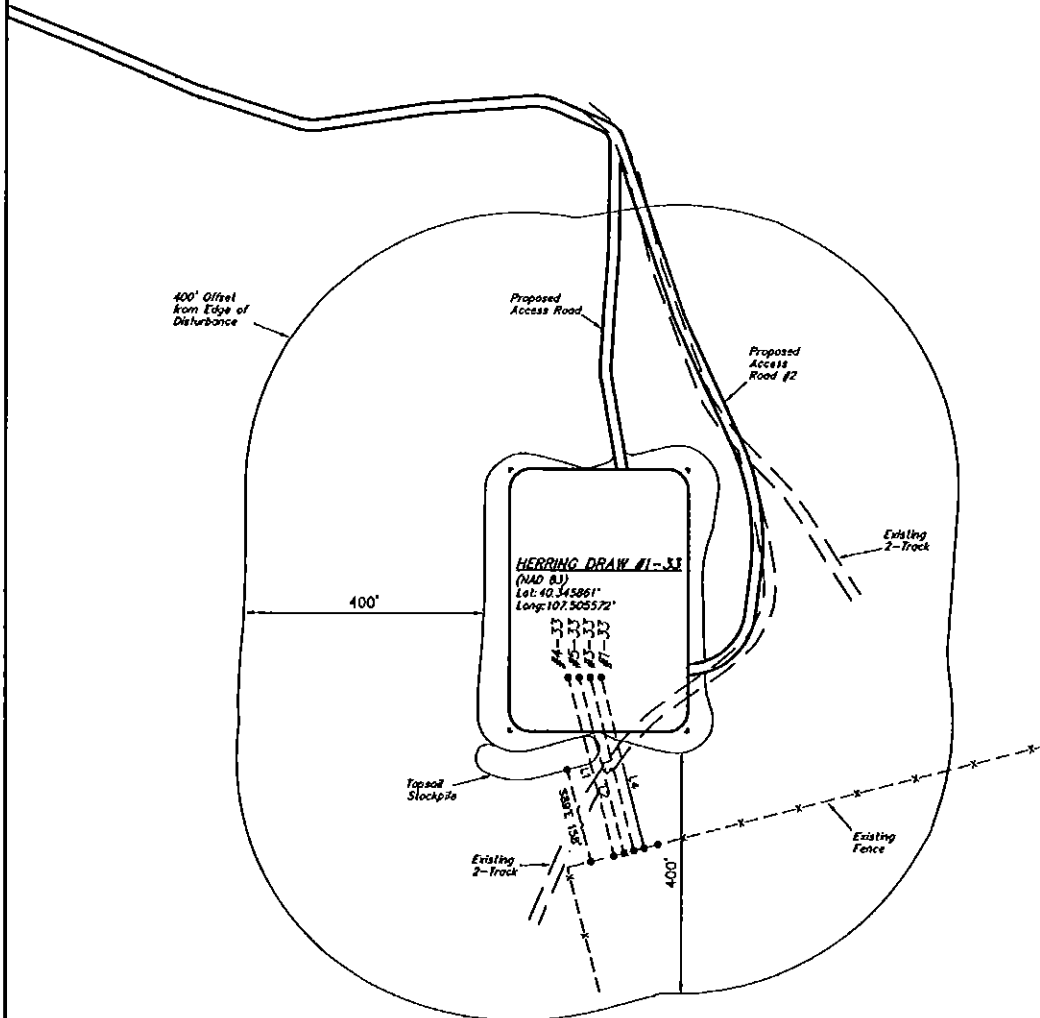
NAD 83 (TARGET BOTTOM HOLE)
LATITUDE = 40°20'15.90" (40.337750)
LONGITUDE = 107°31'01.52" (107.517089)
NAD 27 (TARGET BOTTOM HOLE)
LATITUDE = 40°20'15.99" (40.337775)
LONGITUDE = 107°30'59.29" (107.516469)

SWEPI LP

ADDENDUM TO LEGAL PLAT FOR

HERRING DRAW #1-33, #3-33, #4-33 & #5-33
SECTION 33, T5N, R90W, 6th P.M.
NW 1/4 NW 1/4

SCALE: 1" = 200'
DATE: 07-11-11
DRAWN BY: J.L.
REV: 11-02-11
REV: 05-18-12 Z.L.
REVISED: 07-25-12
REVISED: 08-10-12



LINE TABLE		
LINE	DIRECTION	LENGTH
L1	S89°01'18"E	308.04'
L2	S89°01'18"E	301.56'
L3	S89°01'18"E	297.08'
L4	S89°01'18"E	292.60'