

Project: Wattenberg Field
Site: G (Sec 4-T04N-R65W) Weld County, CO
Well: Knaub PC G04-66-1HN
Wellbore: Original Drilling
Design: APD - Rev 0

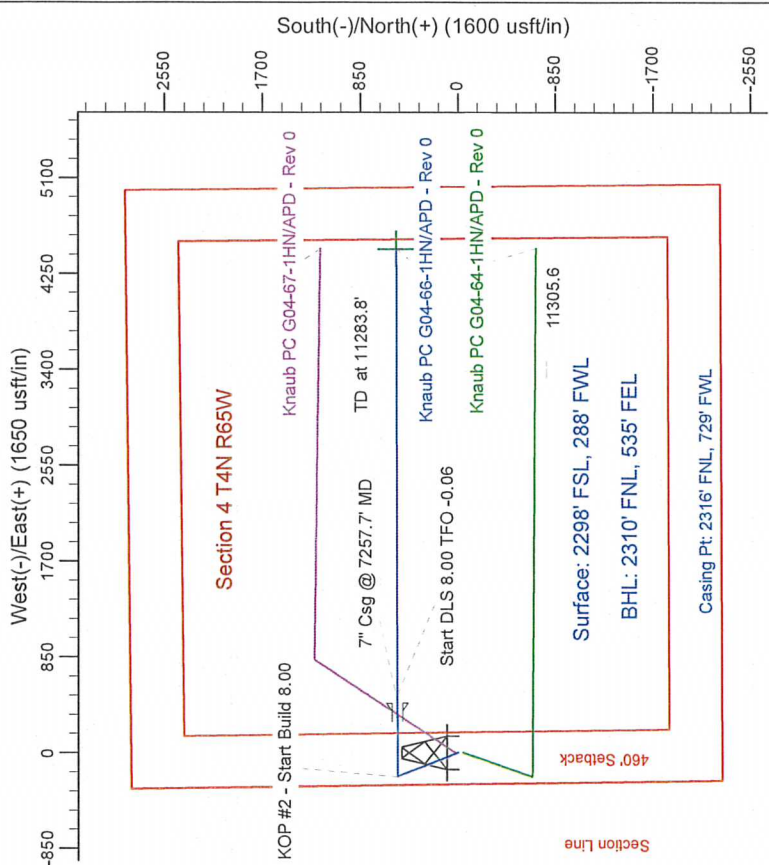
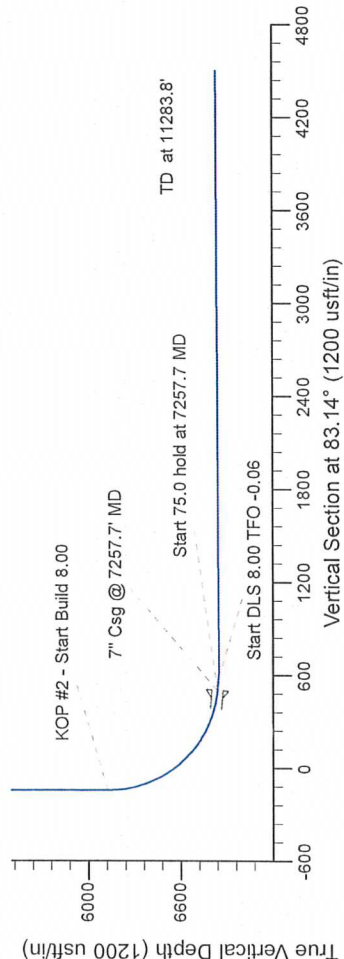
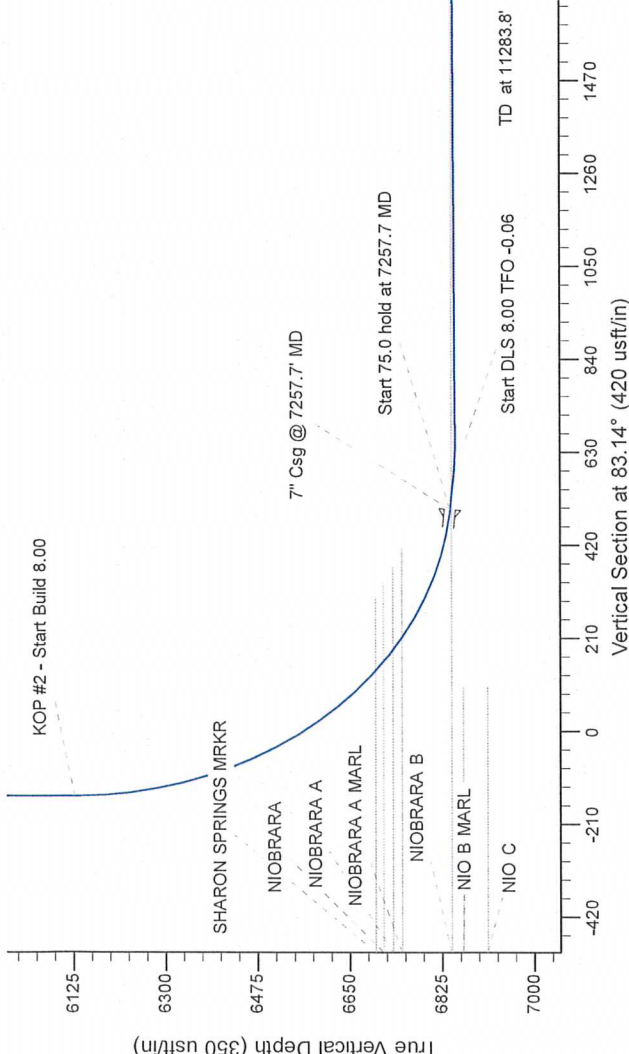
Northern Region Drilling

Geodetic System: US State Plane 1983
Datum: North American Datum 1983
Ellipsoid: GRS 1980
Zone: Colorado Northern Zone
System Datum: Mean Sea Level

SECTION DETAILS

Sec	MD	Inc	Azi	TVD	+N/-S	+E/-W	Dleg	TFace	VSecl	Target
1	1800.0	0.00	0.00	0.0	0.0	0.0	0.00	0.00	0.0	0.0
2	2000.0	0.00	338.03	1800.3	72.7	-29.3	0.00	338.03	-20.4	0.0
3	2200.0	15.03	338.03	3330.7	455.3	-183.7	2.50	338.03	-128.0	0.0
4	2400.0	0.00	0.00	4525.0	528.0	-213.0	2.50	180.00	-148.4	0.0
5	2600.0	0.00	0.00	6127.0	528.0	-213.0	0.00	0.00	0.00	0.00
6	2800.0	89.89	89.89	6840.5	528.3	440.8	8.00	89.89	500.8	0.00
7	3000.0	85.00	89.89	6847.0	529.5	515.5	8.00	0.00	575.0	0.00
8	3200.0	85.00	89.89	6849.8	529.5	580.4	8.00	-0.06	639.5	0.00
9	3400.0	90.20	89.88	6836.3	537.4	4466.5	0.00	0.00	0.00	0.00
10	3600.0	11283.8	89.88	6836.3	537.4	4466.5	0.00	0.00	0.00	0.00

Knaub PC G04-66-1HN BHL 2310'FNL, 535'FEL



T G M

Azimuths to Grid North
True North: -0.53°
Magnetic North: 8.09°

Magnetic Field
Strength: 53020.7 nT
Dip Angle: 66.99°
Date: 7/18/2012
Model: IGRF200510

WELL DETAILS: Knaub PC G04-66-1HN			
North	East	Ground Level	Longitude
1368012.21	3229500.53	4618.0	-104.676680
Latitude	Latitude	Altitude	
40.340670	40.340670		
Plan: APD - Rev 0 (Knaub PC G04-66-1HN/Original Drilling)			
Created By: Carrie Willers		Date: 13/38, July 20 2012	
Checked:		Date:	
Reviewed:		Date:	
Approved:		Date:	