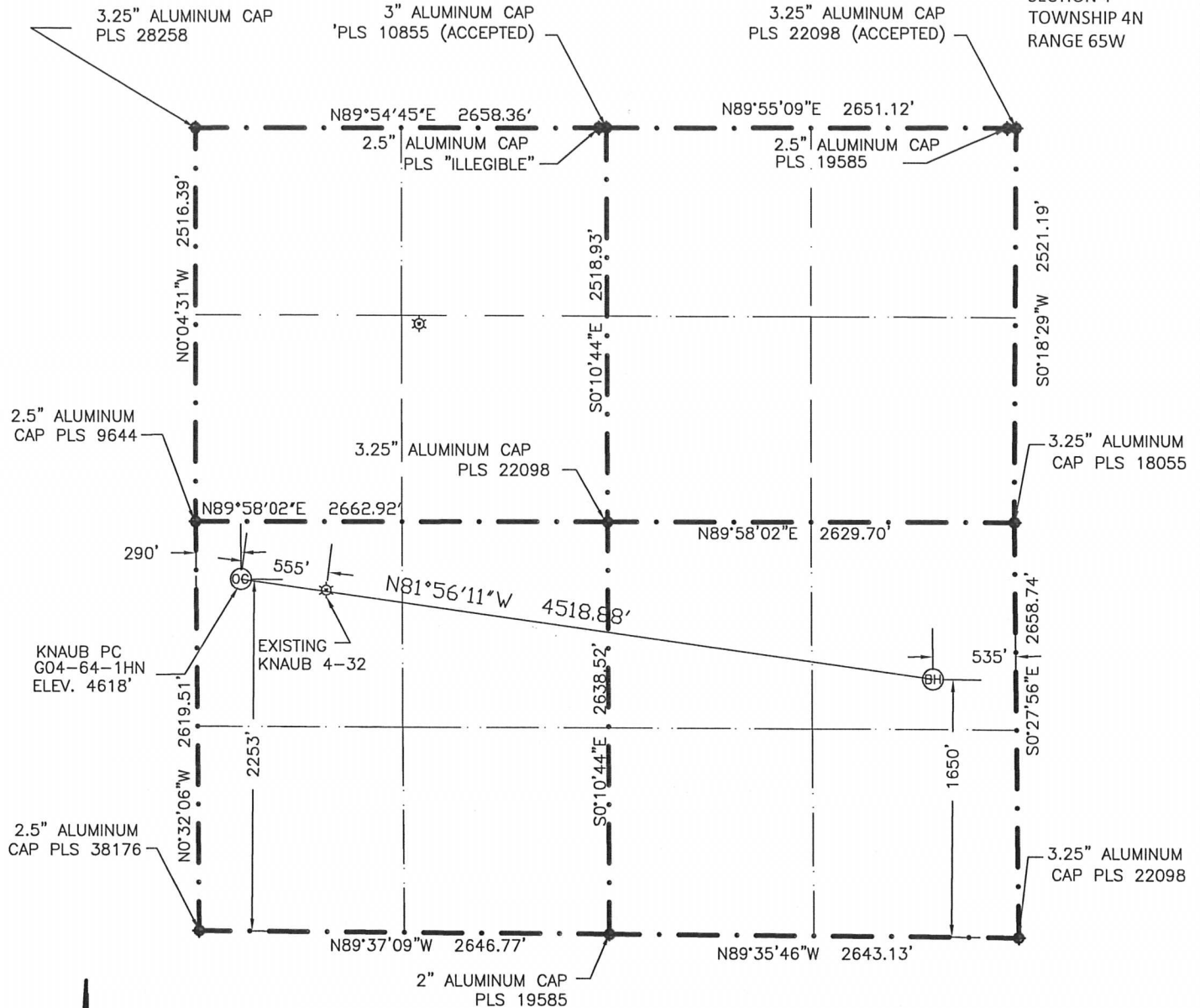


WELL LOCATION CERTIFICATE

THIS MAP DOES NOT REPRESENT A BOUNDARY SURVEY

SECTION 4
TOWNSHIP 4N
RANGE 65W

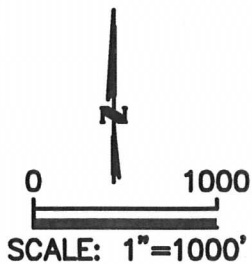


IN ACCORDANCE WITH A REQUEST BY ERIK VAN DECAR-NOBLE ENERGY INC., BOUNDARY BOYS, LLC. HAS DETERMINED THE LOCATION OF THE KNAUB-PC G04-64-1HN WELL TO BE 2253' FSL, 290' FWL, AS MEASURED AT NINETY (90) DEGREES FROM THE SECTION LINES, AND THE BOTTOM HOLE TO BE 1650' FSL, 535' FEL, SECTION 4, TOWNSHIP 4 NORTH, RANGE 65 WEST, 6TH PRINCIPLE MERIDIAN, WELD COUNTY, COLORADO

I HEREBY CERTIFY THAT THIS WELL LOCATION CERTIFICATE WAS PREPARED BY ME, OR UNDER MY DIRECT SUPERVISION, THAT THE FIELD WORK WAS COMPLETED ON DECEMBER 19, 2011 FOR AND ON BEHALF OF NOBLE ENERGY INC., THAT IT IS NOT A LAND SURVEY PLAT OR AN IMPROVEMENT SURVEY PLAT, AND THAT IT IS NOT TO BE RELIED UPON FOR ESTABLISHMENT OF FENCE, BUILDING, OR OTHER FUTURE IMPROVEMENT LINES.

LATITUDE & LONGITUDE (NAD83 SURFACE HOLE)
LATITUDE: N 40.34055
LONGITUDE: W 104.67668
PDOP: 2.2
QUARTER-QUARTER: NW1/4SW1/4
NEAREST PROPERTY LINE: 290' WEST

LATITUDE & LONGITUDE (NAD83 BOTTOM HOLE)
LATITUDE: N 40.33869
LONGITUDE: W 104.66065
QUARTER-QUARTER: NE1/4SW1/4



- 1) BASIS OF BEARINGS FOR THIS MAP ARE BASED UPON GPS OBSERVATIONS MADE ON DECEMBER 19, 2011 BETWEEN MONUMENTS LOCATED AT THE NORTHWEST CORNER AND THE NE CORNER OF SAID SECTION 4 AND WITH ALL OTHER BEARINGS SHOWN HEREON RELATIVE THERETO.
- 2) ELEVATIONS ARE BASED UPON NGS OPUS SOLUTION, NAVD 88 DATUM
- 3) THE NEAREST EXISTING WELL IS KNAUB 4-32, 555' EAST-SOUTH-EAST
- 4) SEE VISIBLE IMPROVEMENTS EXHIBIT FOR ALL IMPROVEMENTS WITH 400' IMPROVEMENT BUFFER
- 5) THE LOCATION FALLS IN PASTURE LAND

NOTICE: According to Colorado law you MUST commence any legal action based upon any defect in this W.L.C. within three years after you first discover such defect. In no event may any action based upon any defect in this W.L.C. be commenced more than ten years from this said date of the certification shown hereon.

LEGEND



FOUND SURVEY MONUMENT PER
MONUMENT RECORD-EXCEPTIONS NOTED



CALCULATED



EXISTING WELL HEAD
(UNLESS OTHERWISE NOTED)

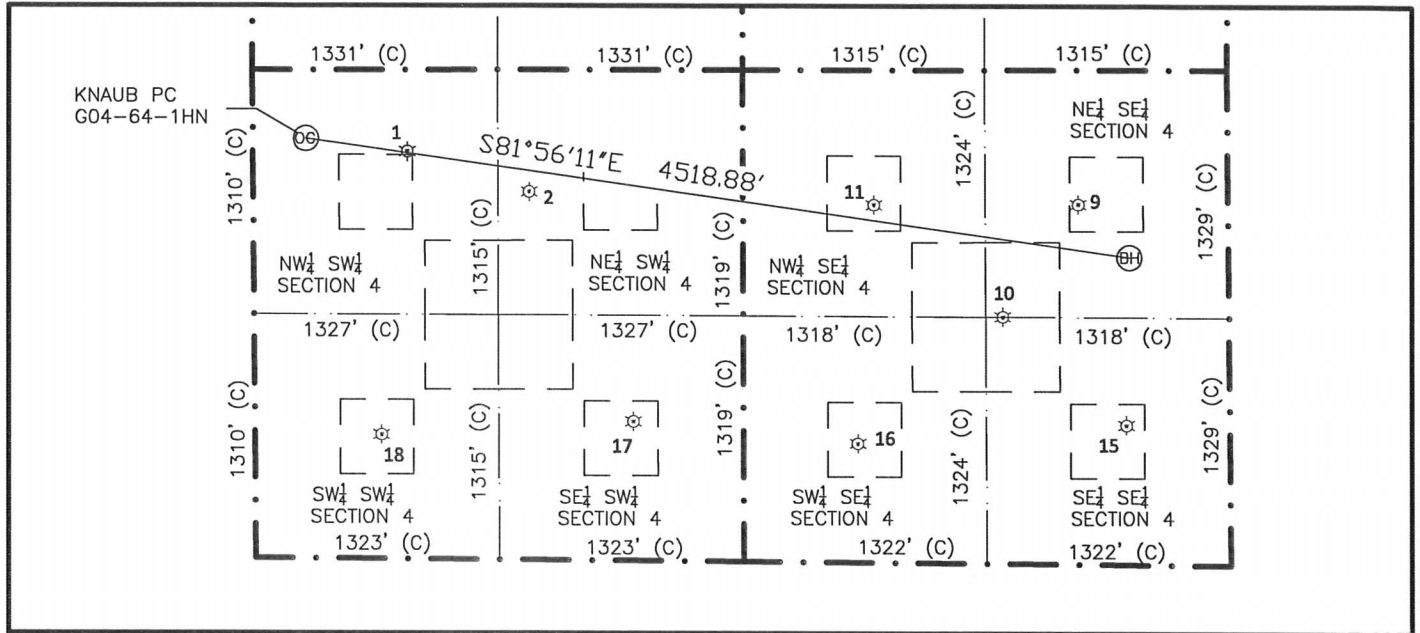


Gregory A. Clark
Professional Land Surveyor Registration No. 32430
State of Colorado

Job No. 1N0B0116

SITE SKETCH

KNAUB PC G04-64-1HN

SECTION 4
TOWNSHIP 4N
RANGE 65W

1

KNAUB 4-32
NW $\frac{1}{4}$ SW $\frac{1}{4}$
2187' FSL
838' FWL
LAT- 40.34037N
LONG- 104.67469W
PDOP 2.3
ELEV. 4679

2

KNAUB 4-1
NE $\frac{1}{4}$ SW $\frac{1}{4}$
1976' FSL
1498' FWL
LAT- 40.33978N
LONG- 104.67232W
PDOP 2.1
ELEV. 4681

9

KALLAS 4-41
NE $\frac{1}{4}$ SE $\frac{1}{4}$
1932' FSL
811' FEL
LAT- 40.33960N
LONG- 104.66162W
PDOP 2.0
ELEV. 4672

10

KALLAS 4-45
NE $\frac{1}{4}$ SE $\frac{1}{4}$
1326' FSL
1225' FEL
LAT- 40.33794N
LONG- 104.66309W
PDOP 1.8
ELEV. 4676

11

KALLAS 4-42
NW $\frac{1}{4}$ SE $\frac{1}{4}$
1921' FSL
1921' FEL
LAT- 40.33959N
LONG- 104.66560W
PDOP 1.9
ELEV. 4679

15

BACKUS 4-16
SE $\frac{1}{4}$ SE $\frac{1}{4}$
749' FSL
559' FEL
LAT- 40.33622N
LONG- 104.66074W
PDOP 2.6
ELEV. 4615

16

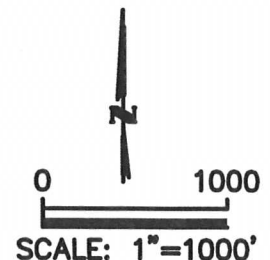
REXFORD 1
SW $\frac{1}{4}$ SE $\frac{1}{4}$
639' FSL
2018' FEL
LAT- 40.33599N
LONG- 104.66598
PDOP 2.6
ELEV. 4618

17

BETZ 2
SE $\frac{1}{4}$ SW $\frac{1}{4}$
748' FSL
2054' FWL
LAT- 40.33634N
LONG- 104.67035W
PDOP 1.9
ELEV. 4619

18

BETZ 1
SW $\frac{1}{4}$ SW $\frac{1}{4}$
668' FSL
687' FWL
LAT- 40.33618N
LONG- 104.67525W
PDOP 1.8
ELEV. 4624



1) THIS SKETCH DOES NOT REPRESENT A BOUNDARY SURVEY

2) THE DATUM FOR THE LATITUDES AND LONGITUDES ON THIS SKETCH IS NAD83