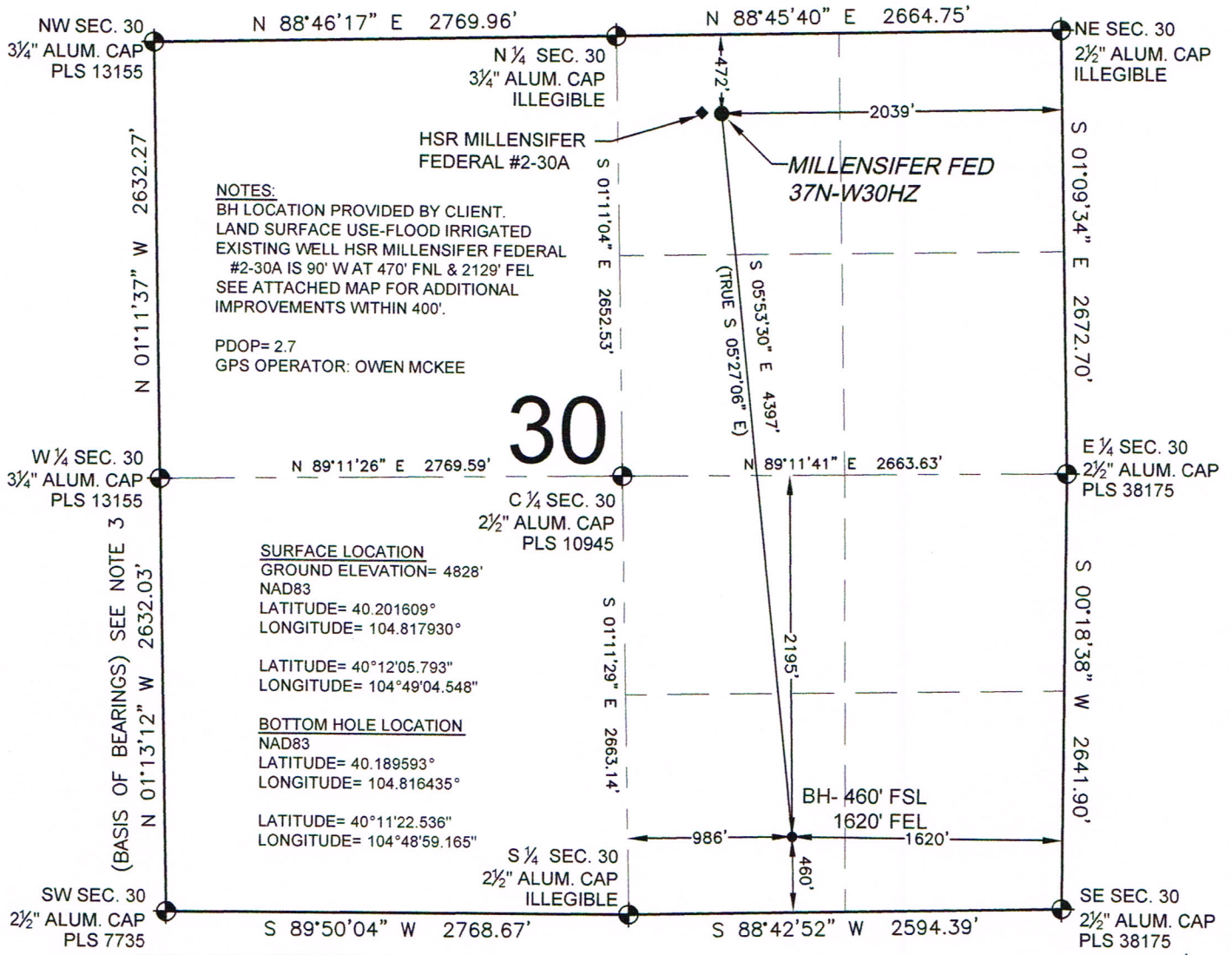


WELL LOCATION CERTIFICATE: MILLENSIFER FED 37N-W30HZ

SECTION 30, TOWNSHIP 3 NORTH, RANGE 66 WEST, 6TH P.M.



NOTES:
 BH LOCATION PROVIDED BY CLIENT.
 LAND SURFACE USE-FLOOD IRRIGATED
 EXISTING WELL HSR MILLENSIFER FEDERAL
 #2-30A IS 90° W AT 470' FNL & 2129' FEL
 SEE ATTACHED MAP FOR ADDITIONAL
 IMPROVEMENTS WITHIN 400'.

PDOP= 2.7
 GPS OPERATOR: OWEN MCKEE

SURFACE LOCATION
 GROUND ELEVATION= 4828'
 NAD83
 LATITUDE= 40.201609°
 LONGITUDE= 104.817930°

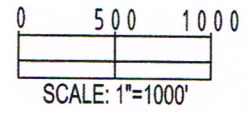
LATITUDE= 40°12'05.793"
 LONGITUDE= 104°49'04.548"

BOTTOM HOLE LOCATION
 NAD83
 LATITUDE= 40.189593°
 LONGITUDE= 104.816435°

LATITUDE= 40°11'22.536"
 LONGITUDE= 104°48'59.165"

LEGEND

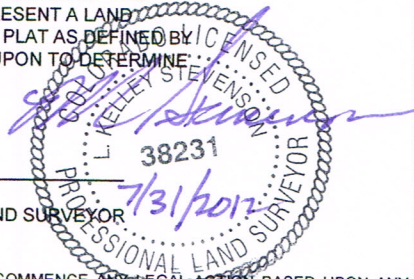
- ⊕ = EXISTING MONUMENT
- ⬤ = PROPOSED WELL
- ⬥ = BOTTOM HOLE
- ◆ = EXISTING WELL
- BH = BOTTOM HOLE



NOTES:

1. THIS FIELD SURVEY CONFORMS TO THE MINIMUM STANDARDS SET BY THE C.O.G.C.C., RULE NO. 215
2. HORIZONTAL POSITIONS AND ORTHOMETRIC ELEVATIONS SHOWN AT THE WELL HEAD, ARE BASED ON GPS-RTK POSITIONS DERIVED FROM MINIMUM 2-HOUR STATIC OBSERVATIONS CORRECTED BY THE NATIONAL GEODETIC SURVEY ONLINE POSITIONING USER SERVICE, O.P.U.S. DATUM: HORIZONTAL = NAD83/2007, VERTICAL = NAVD88
3. THE BASIS OF BEARINGS ARE STATE PLANE COORDINATE SYSTEM GRID BEARINGS SHOWN HEREON BETWEEN THE DESCRIBED MONUMENTS SHOWN HEREON.
4. GRID DISTANCES ARE SHOWN, AS MEASURED IN THE FIELD, WITH TIES TO WELLS MEASURED PERPENDICULAR TO SECTION LINES.

I, L. KELLEY STEVENSON, A LICENSED PROFESSIONAL LAND SURVEYOR IN THE STATE OF COLORADO DO HEREBY CERTIFY TO **KERR-MCGEE OIL & GAS ONSHORE LP**, THAT THE SURVEY AND WELL LOCATION CERTIFICATE SHOWN HEREON WERE DONE BY ME OR UNDER MY DIRECT SUPERVISION AND THAT THE DRAWING SHOWN HEREON ACCURATELY DEPICTS THE PROPOSED LOCATION OF THE WELL. THIS CERTIFICATE DOES NOT REPRESENT A LAND SURVEY PLAT OR IMPROVEMENT SURVEY PLAT AS DEFINED BY C.R.S. 38-51-102 AND CANNOT BE RELIED UPON TO DETERMINE OWNERSHIP.



L. KELLEY STEVENSON, PLS 38231
 COLORADO LICENSED PROFESSIONAL LAND SURVEYOR
 FOR AND ON BEHALF OF P.F.S., LLC

PREPARED BY: Petroleum Field Services, LLC 1801 W. 13th Ave. Denver, CO 80204	FIELD DATE: 02-17-12 DRAWING DATE: 07-30-12 REV: SMF CHECKED: SVT	SURFACE LOCATION: NW 1/4 NE 1/4, SEC. 30, T3N, R66W, 6TH P.M. WELD COUNTY, COLORADO
--	--	--

NOTICE: ACCORDING TO COLORADO LAW YOU MUST COMMENCE ANY LEGAL ACTION BASED UPON ANY DEFECT IN THIS SURVEY WITHIN THREE YEARS AFTER YOU FIRST DISCOVER SUCH DEFECT. IN NO EVENT MAY ANY ACTION BASED UPON ANY DEFECT IN THIS SURVEY BE COMMENCED MORE THAN TEN YEARS FROM THIS SAID DATE OF THIS CERTIFICATION SHOWN HEREON.