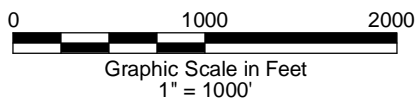
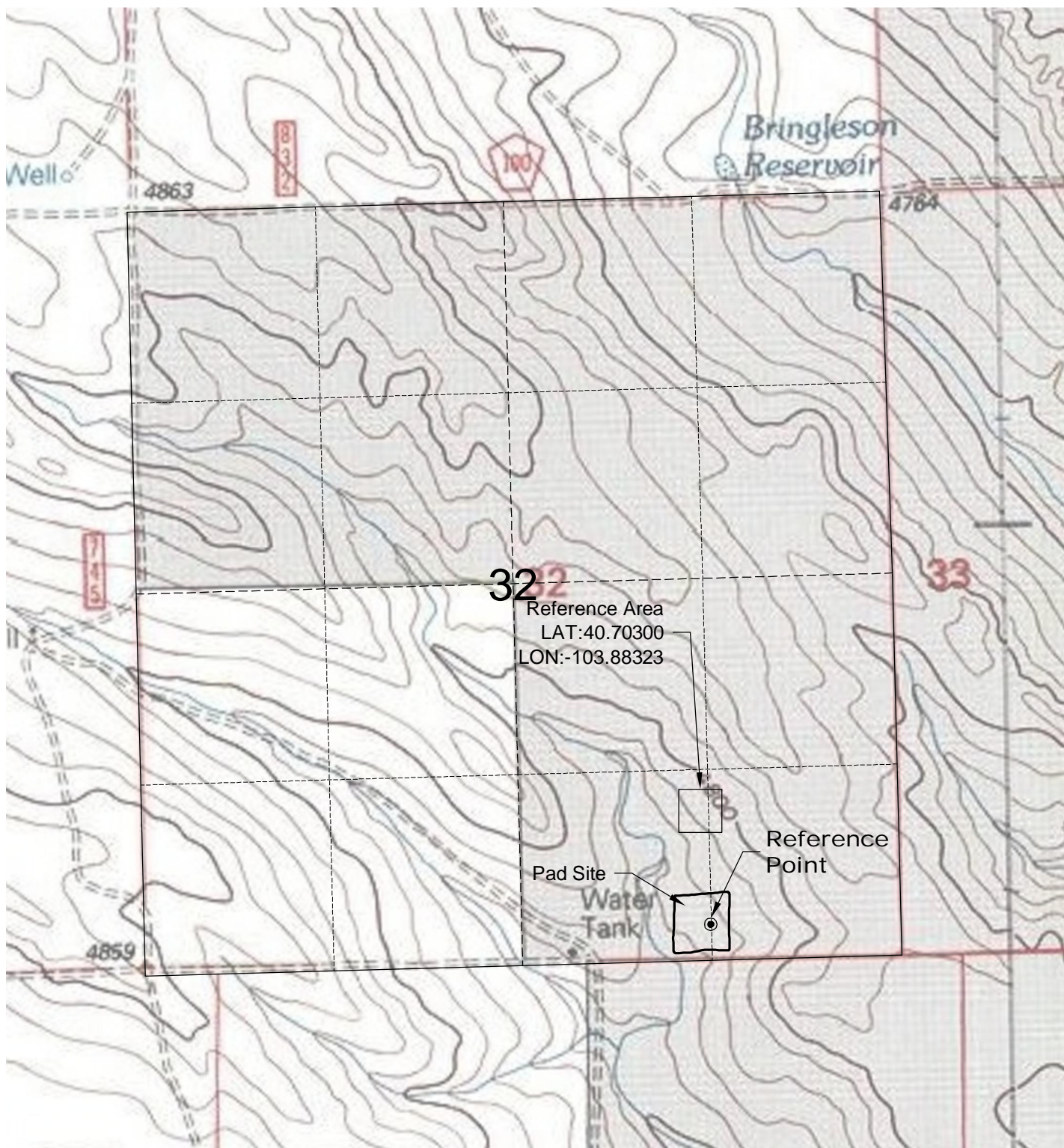


REFERENCE AREA MAP



GEO SURV

LAND SURVEYING AND MAPPING
LAFAYETTE - WINTER PARK
Ph 303 666 0379 Fx 303 665 6320

CARRIZO OIL & GAS, INC
BRINGELSON 1-32-9-58 PAD

SW1/4 SE1/4 SECTION 32 T9N R58W
6th PM WELD COUNTY COLORADO

9/18/12