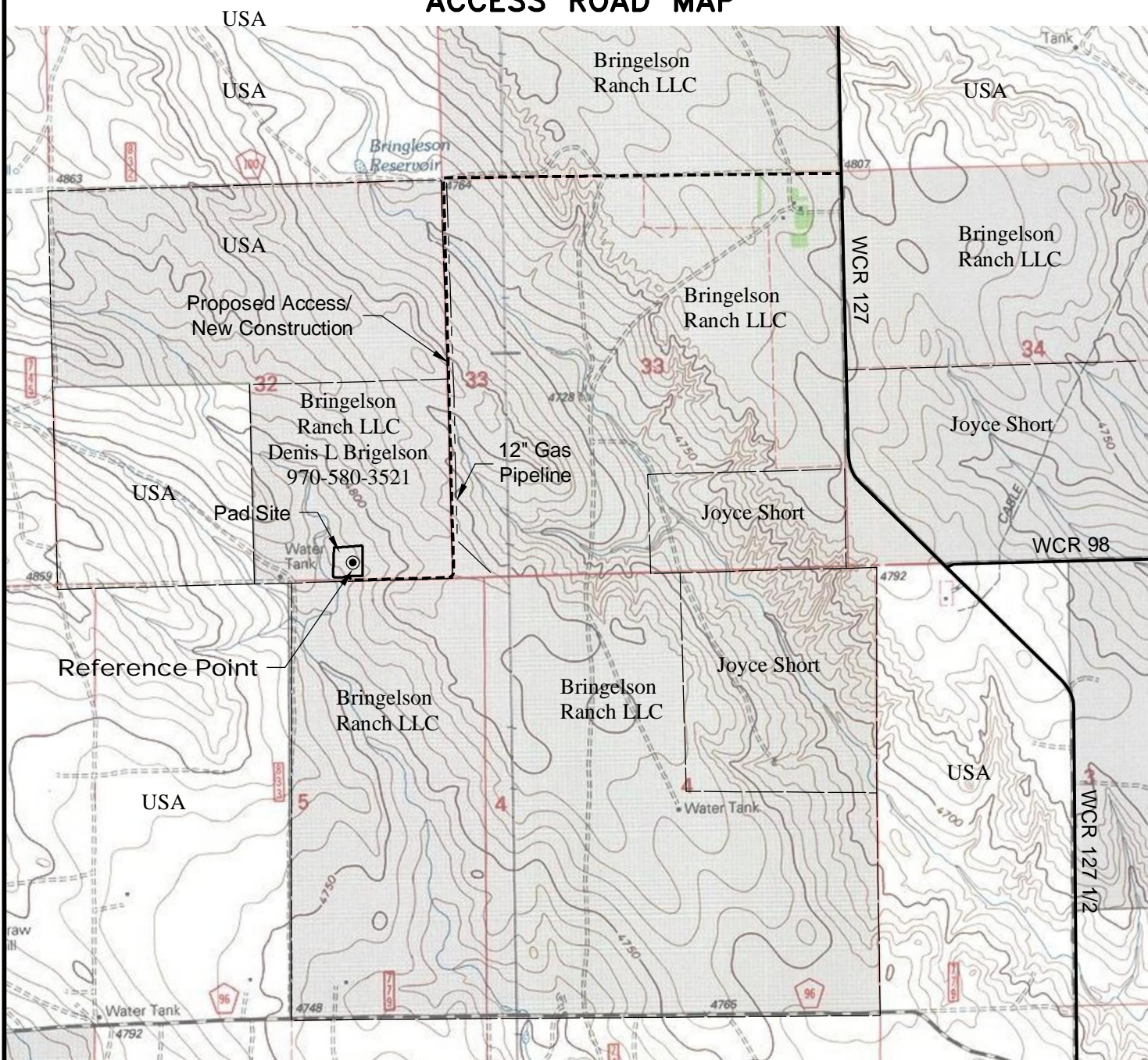


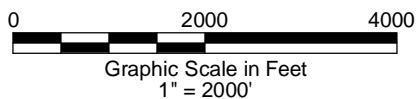
# ACCESS ROAD MAP



## DRIVING DIRECTIONS:

- MP 0.0 - Intersection of Highway 14 & WCR 129 in Raymer;  
North on WCR 129
- MP 3.8 - Road veers left, continue northwest
- MP 4.6 - Road veers right, continue north on WCR 127 1/2
- MP 6.3 - Road veers left, continue northwest
- MP 7.1 - Road veers right, continue north on WCR 127
- MP 7.8 - Left on access to Bringelson Ranch 1-32-9-58 Pad
- MP 10.1 - Bringelson Ranch 1-32-9-58 Pad

9/18/12



LAND SURVEYING AND MAPPING  
LAFAYETTE - WINTER PARK  
Ph 303 666 0379 Fx 303 665 6320

**CARRIZO OIL & GAS, INC**  
**BRINGELSON 1-32-9-58 PAD**

**SW1/4 SE1/4 SECTION 32 T9N R58W**  
**6th PM WELD COUNTY COLORADO**