

CEMENT BOND
LOG



Company	ENCANA OIL & GAS (USA) INC.		
Well	MAIER 31-28		
Field	WATTENBERG		
County	WELD		
State	COLORADO		
Company	ENCANA OIL & GAS (USA) INC.		
Well	MAIER 31-28		
Field	WATTENBERG		
County	WELD		
State	COLORADO		
Location:	API # : 05-123-35604-0000		Other Services
	SHL: 1759' FNL & 2190' FEL BHL: 510' FNL & 2130' FEL SEC: 28 TWP: 2N RGE: 66W		NONE
Permanent Datum	GROUND LEVEL		Elevation 4931'
Log Measured From	KELLY BUSHING = 12'		K.B. 4943' D.F. 4942' G.L. 4931'
Drilling Measured From	KELLY BUSHING		

Date	JULY 13 2012									
Run Number	ONE									
Depth Driller	8180'									
Depth Logger	8154'									
Bottom Logged Interval	8154'									
Top Log Interval	4420' / 800'									
Open Hole Size	7.875"									
Type Fluid	WATER									
Density / Viscosity	~ 8.3#									
Max. Recorded Temp.	256 DEG F									
Estimated Cement Top	4620'									
Time Well Ready	N/A									
Time Logger on Bottom	N/A									
Equipment Number	W112/PRD02									
Location	AULT									
Recorded By	C.PACE									
Witnessed By	T.MAJORS									
Borehole Record										
Run Number	Bit	From	To	Size	Weight	From	To			
ONE	12.25"	0'	900'							
TWO	7.875"	900'	8180'							
Tubing Record										
Casing Record	Size	Wd/Ft	Top	Bottom						
Surface String	8.625"	24#	0'	900'						
Prot. String										
Production String	4.5"	11.6#	0'	8156'						
Liner										

<<< Fold Here >>>

All interpretations are opinions based on inferences from electrical or other measurements and we cannot and do not guarantee the accuracy or correctness of any interpretation, and we shall not, except in the case of gross or willful negligence on our part, be liable or responsible for any loss, costs, damages, or expenses incurred or sustained by anyone resulting from any interpretation made by any of our officers, agents or employees. These interpretations are also subject to our general terms and conditions set out in our current Price Schedule.

Comments

LOG NOT CORRELATED TO ANY OTHER LOGS

SHORT JOINT @ 7188' - 7209'

WE APPRECIATE YOUR BUSINESS, MESA WIRELINE LLC, GRAND JUNCTION CO. (970) 257-0458



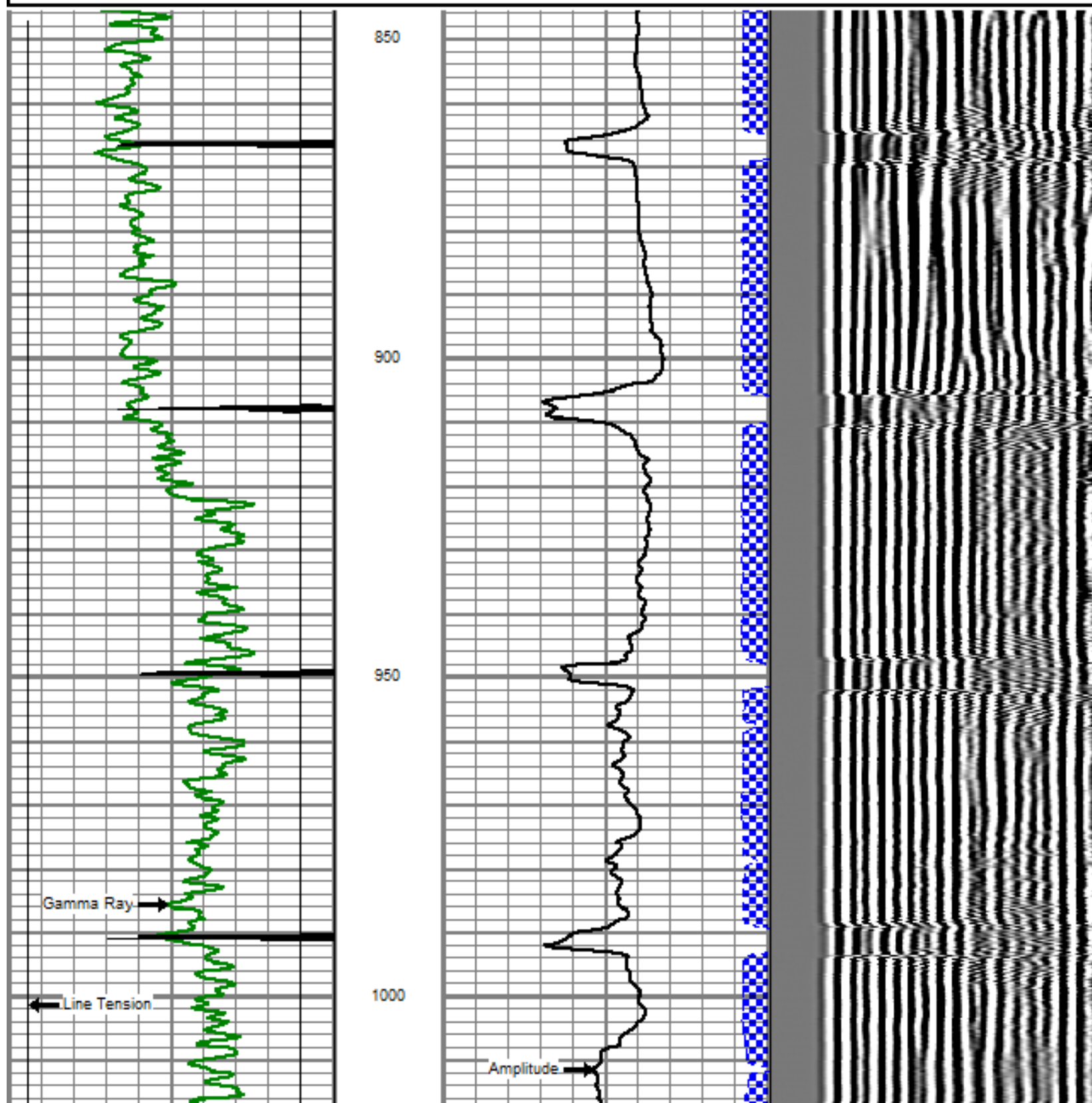
UPPER PASS

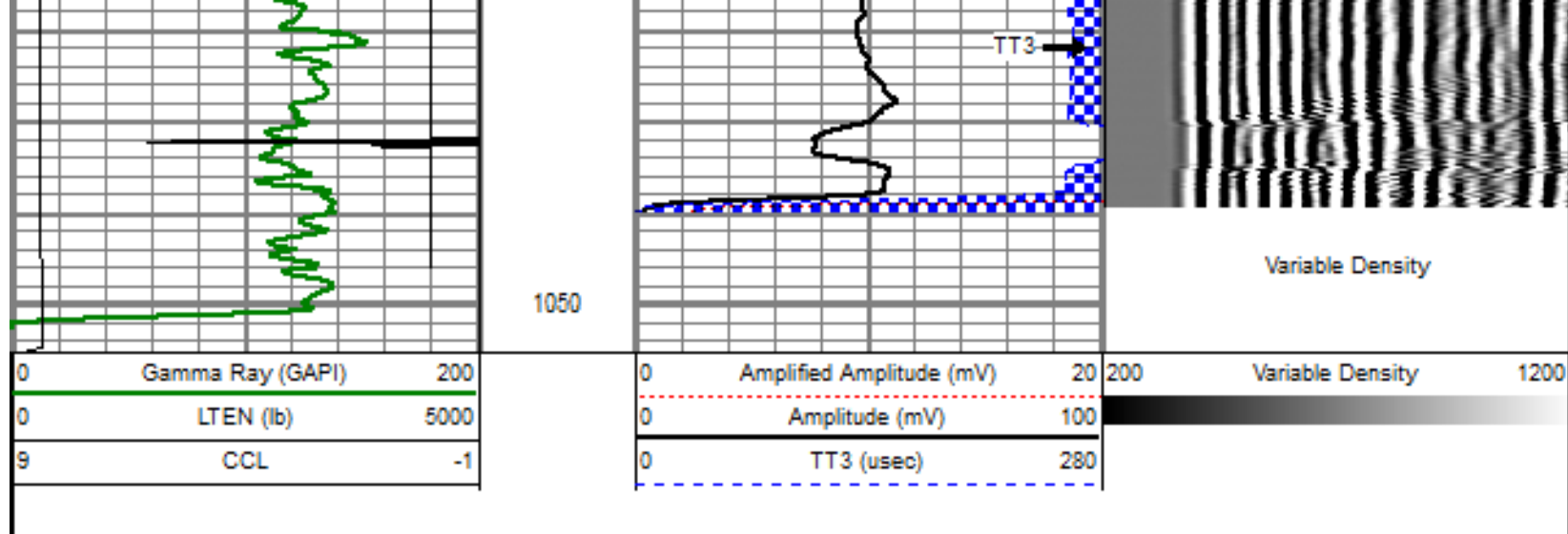
Database File: maier 31-28.db
Dataset Pathname: pass7
Presentation Format: dobl_prb
Dataset Creation: Sat Jul 14 12:08:38 2012 by Log SCH 110930
Charted by: Depth in Feet scaled 1:240

0	Gamma Ray (GAPI)	200
0	LTEN (lb)	5000
9	CCL	-1

0	Amplified Amplitude (mV)	20
0	Amplitude (mV)	100
0	TT3 (usec)	280

200 Variable Density 1200

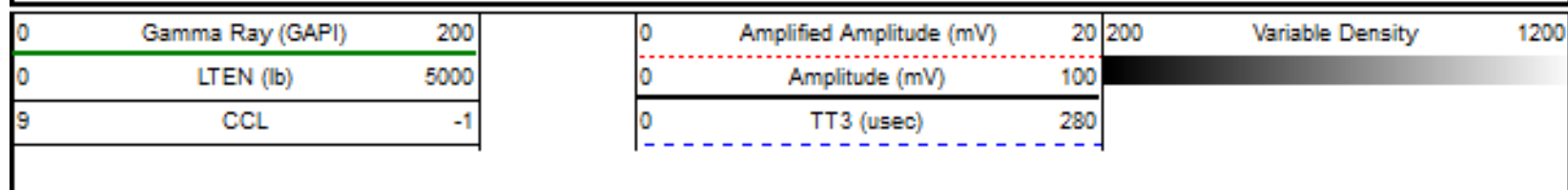


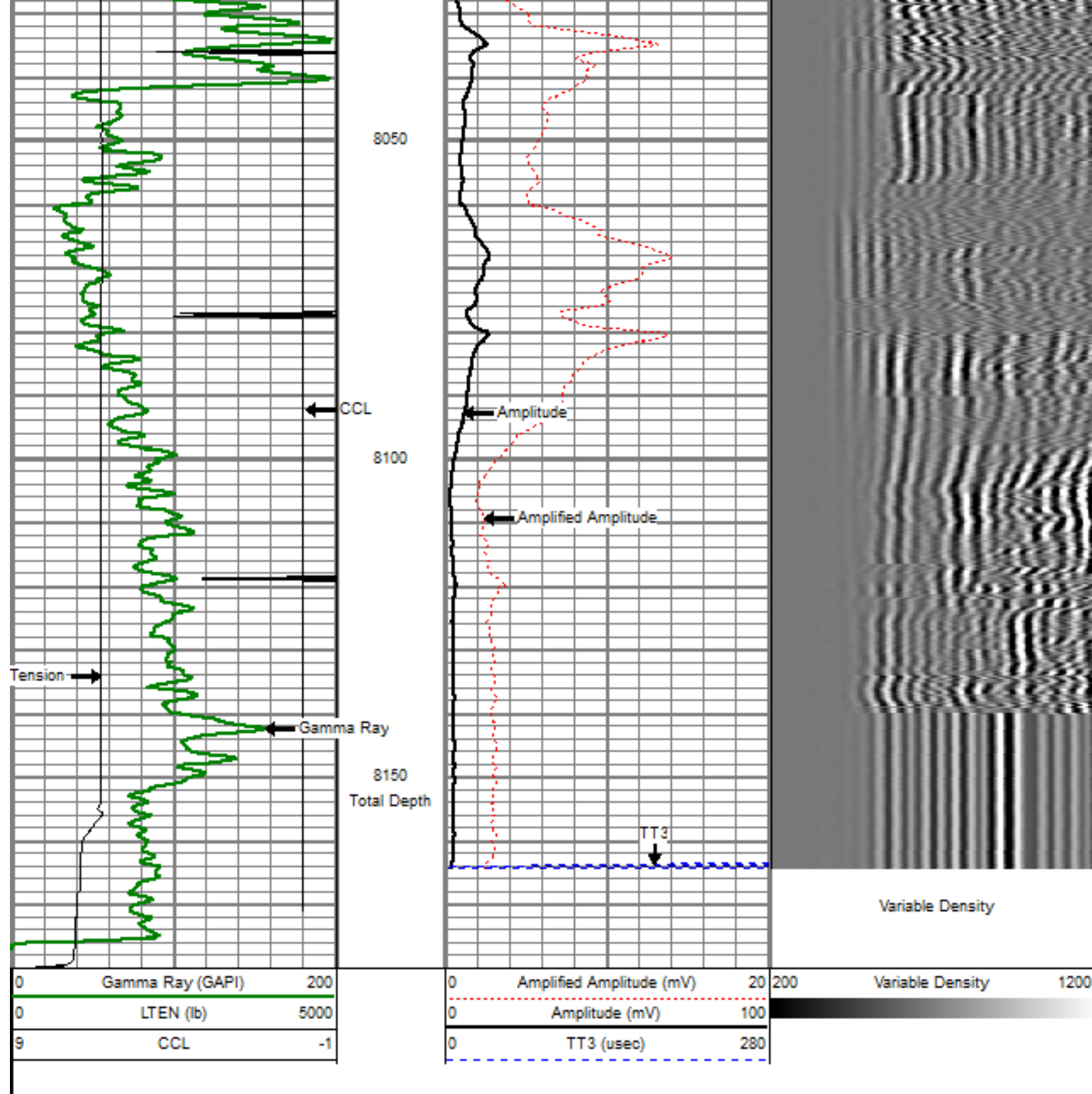


REPEAT PASS

5" = 100'

Database File: maier 31-28.db
 Dataset Pathname: pass4
 Presentation Format: dobl_prb
 Dataset Creation: Sat Jul 14 10:47:04 2012 by Log SCH 110930
 Charted by: Depth in Feet scaled 1:240





MAIN PASS

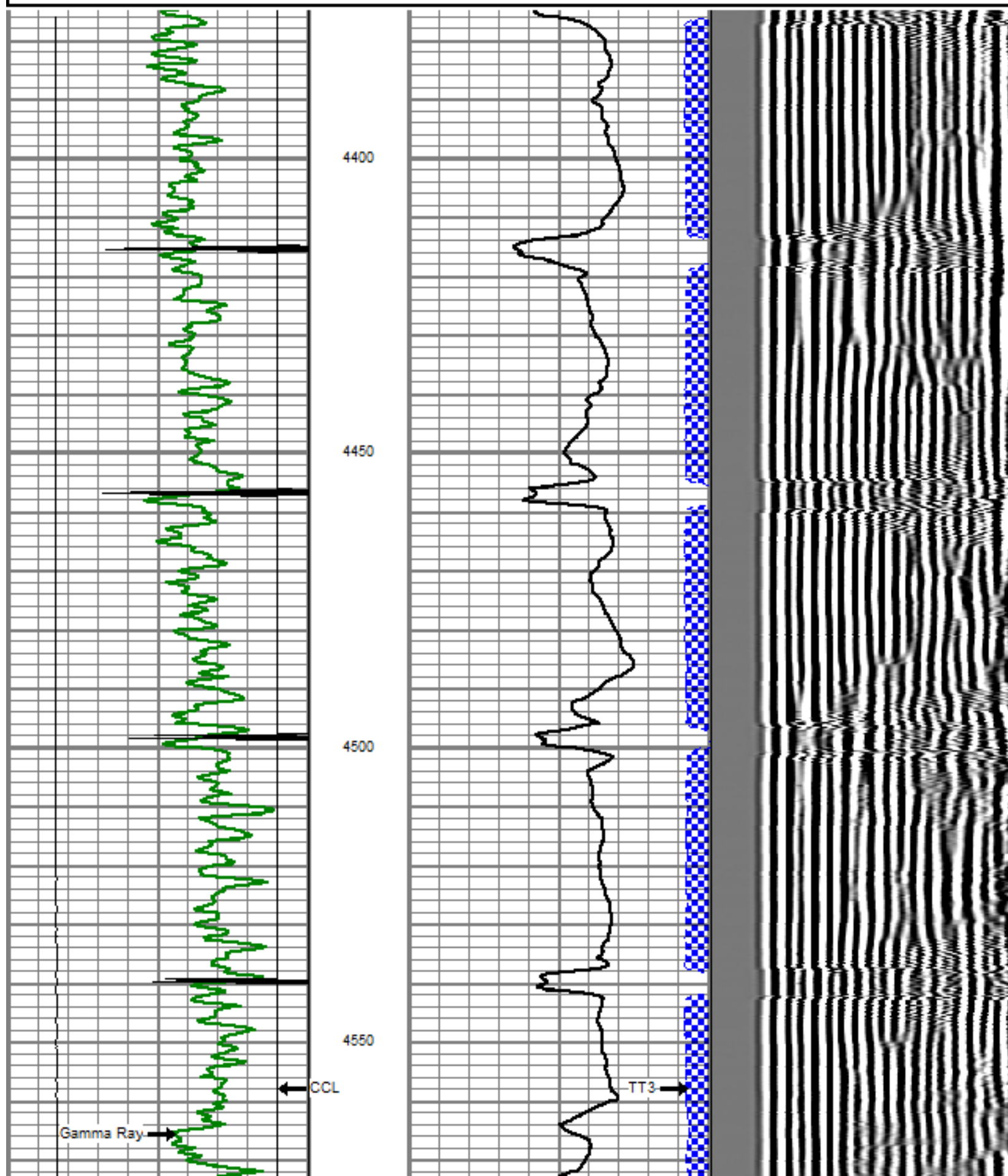
5" = 100'

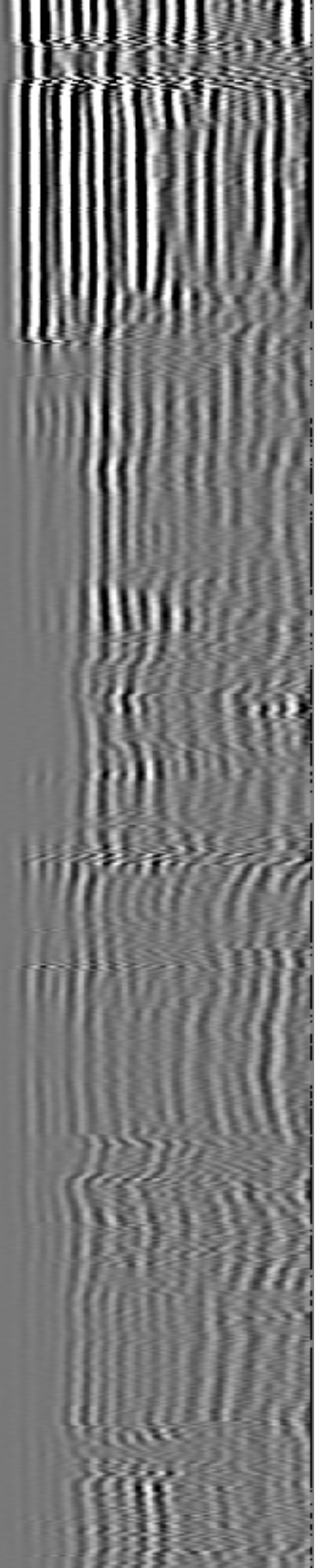
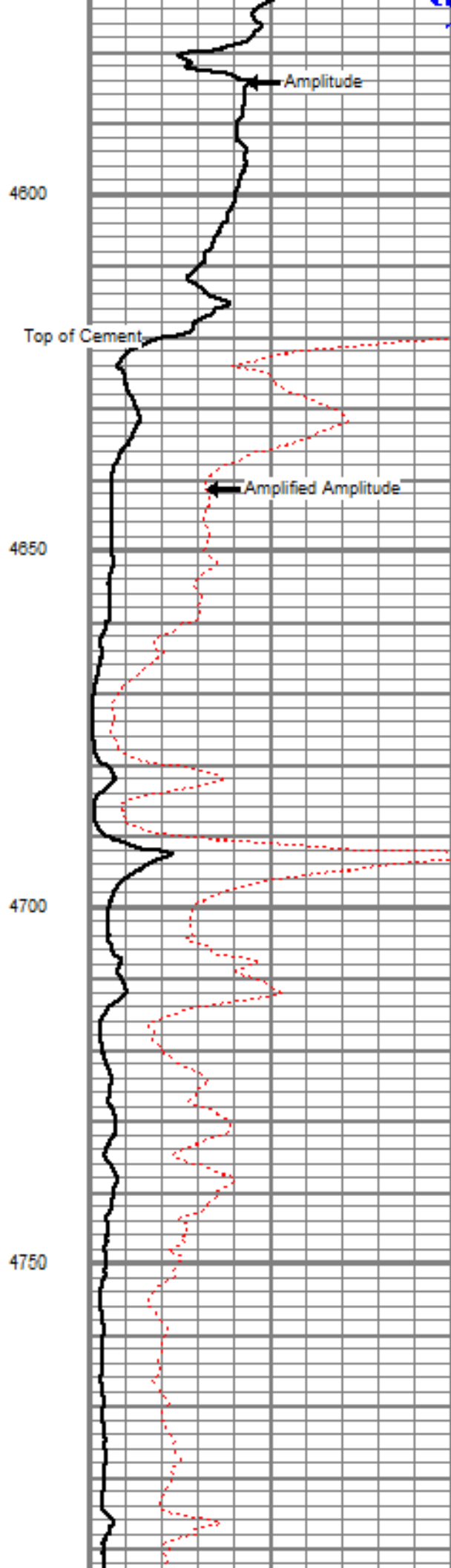
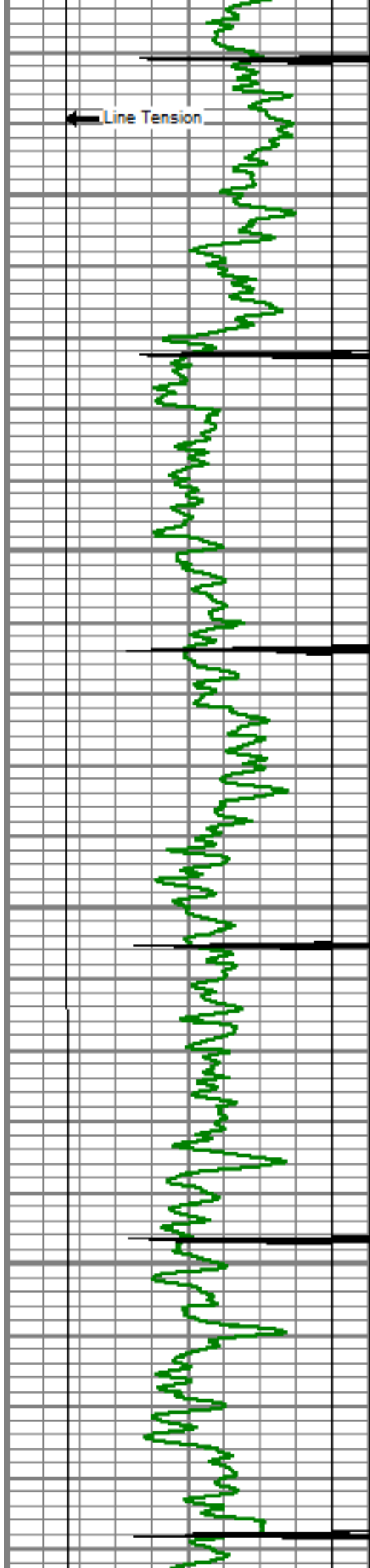
Database File: maier 31-28.db
 Dataset Pathname: pass5
 Presentation Format: dobl_prb
 Dataset Creation: Sat Jul 14 10:55:53 2012 by Log SCH 110930
 Charted by: Depth in Feet scaled 1:240

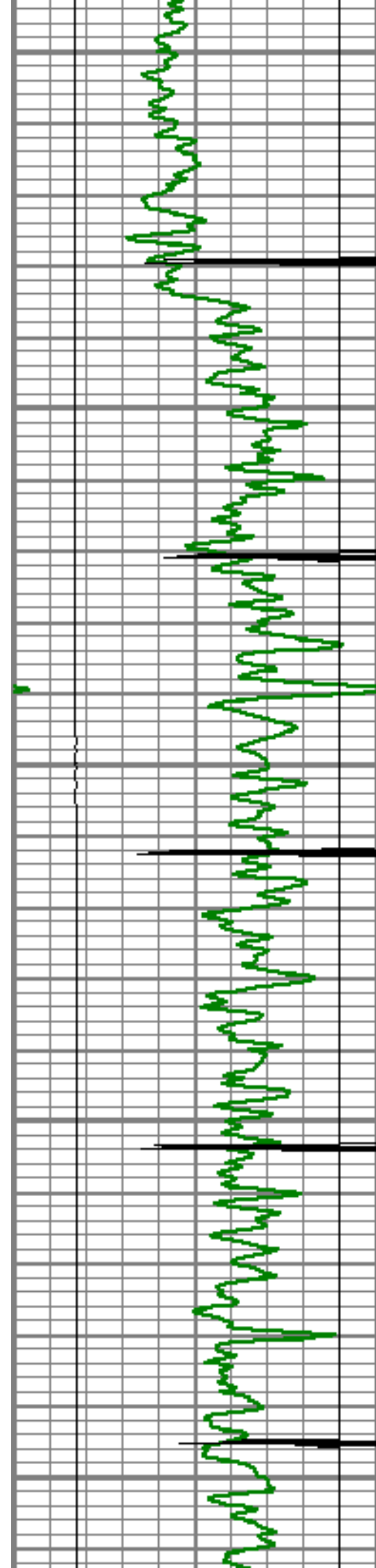
0	Gamma Ray (GAPI)	200
0	LTEN (lb)	5000
9	CCL	-1

0	Amplified Amplitude (mV)	20
0	Amplitude (mV)	100
0	TT3 (usec)	280

200 Variable Density 1200







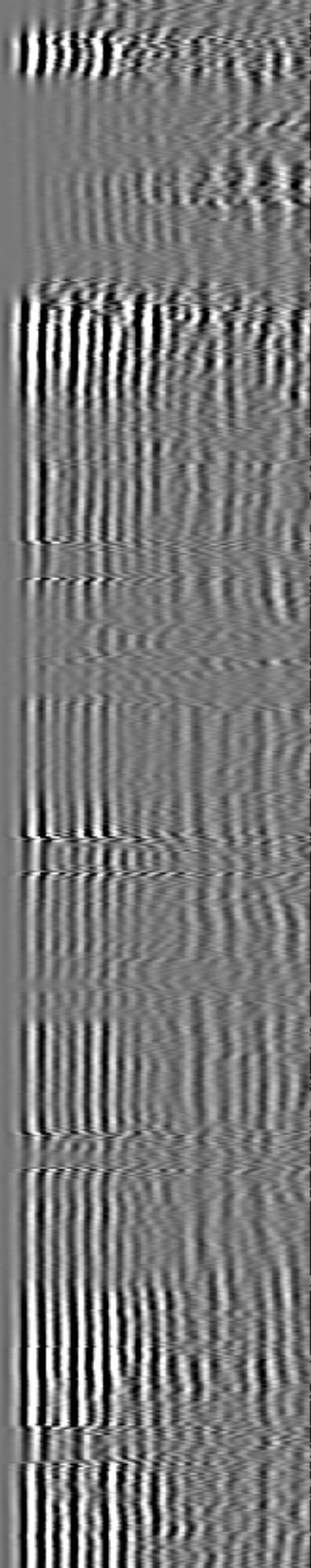
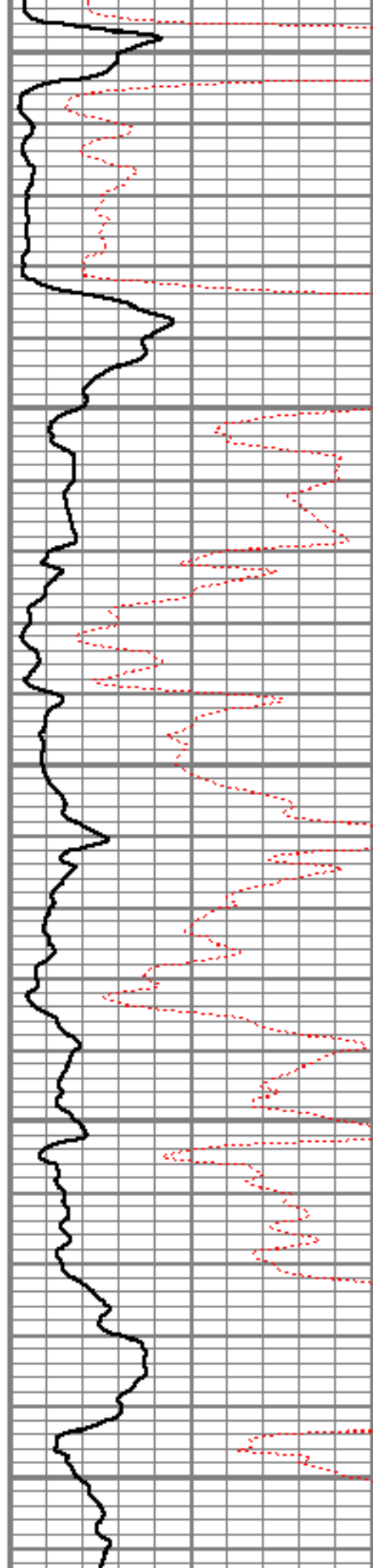
4800

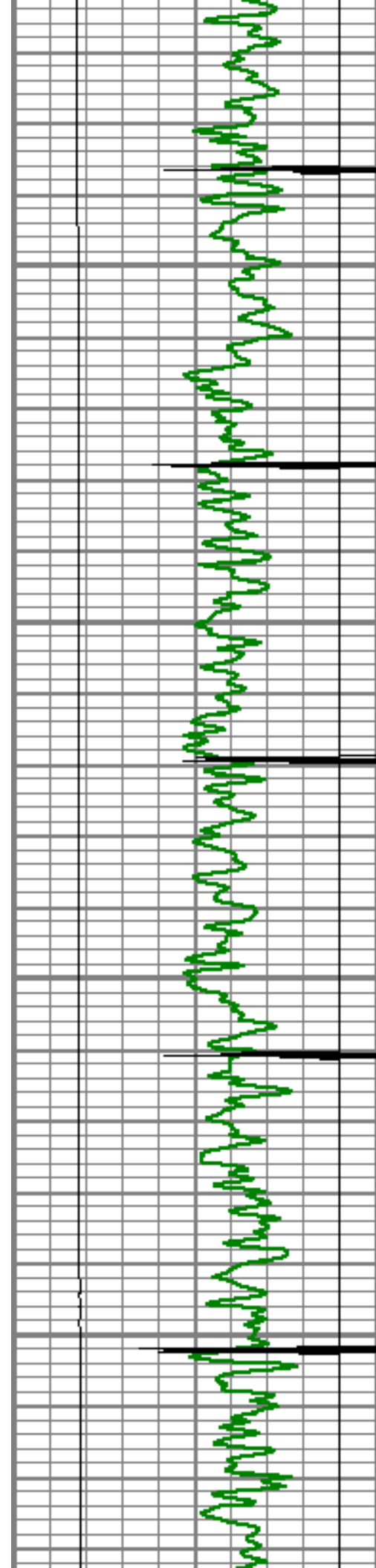
4850

4900

4950

5000



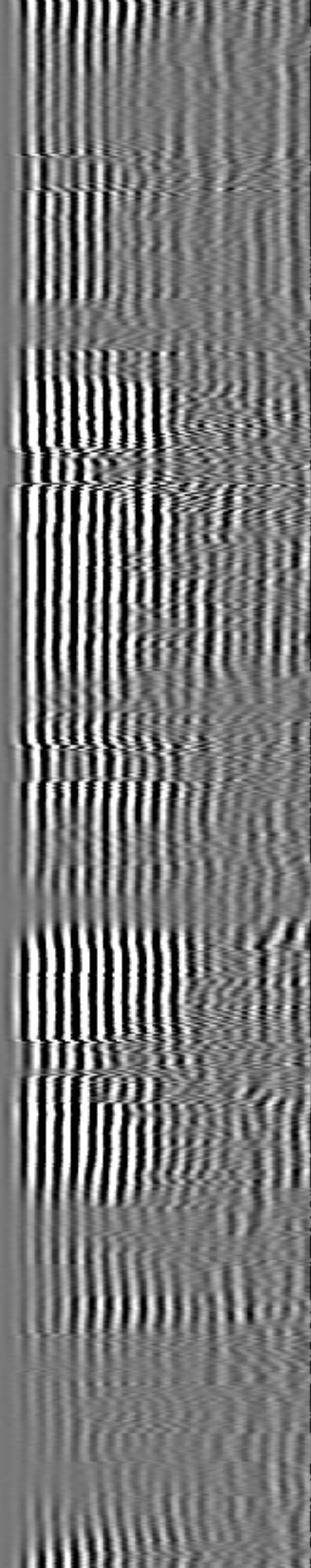
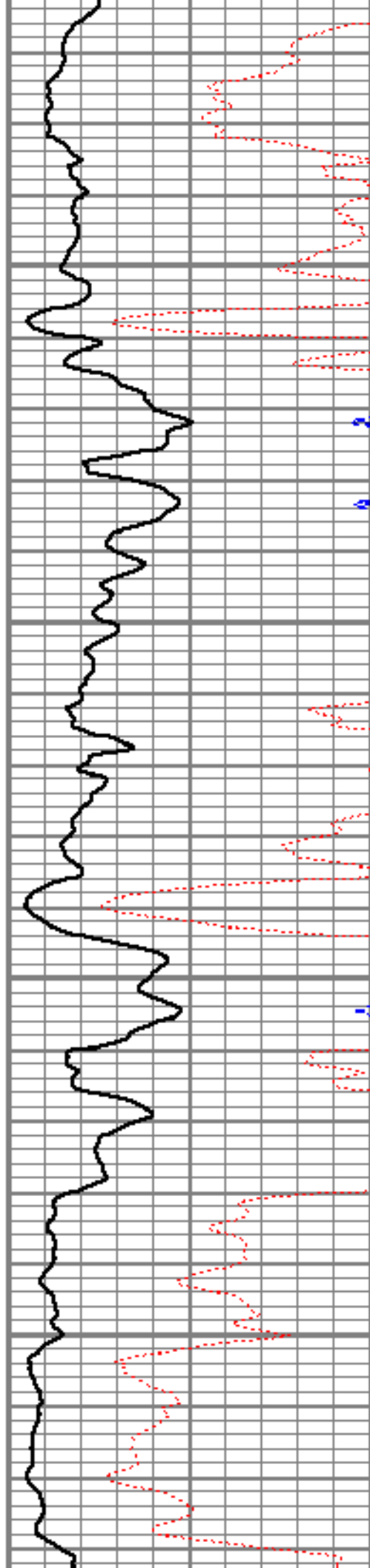


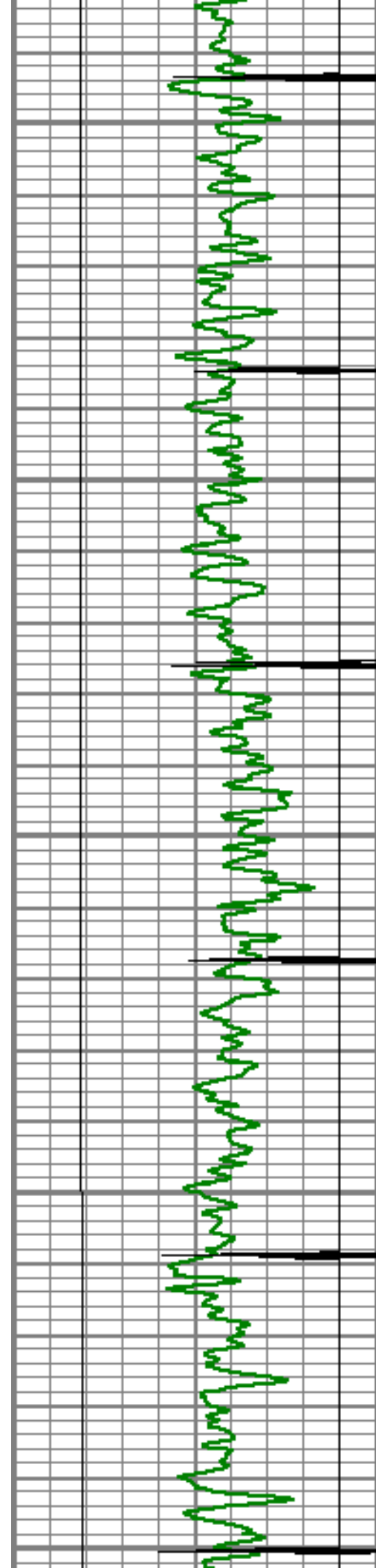
5050

5100

5150

5200





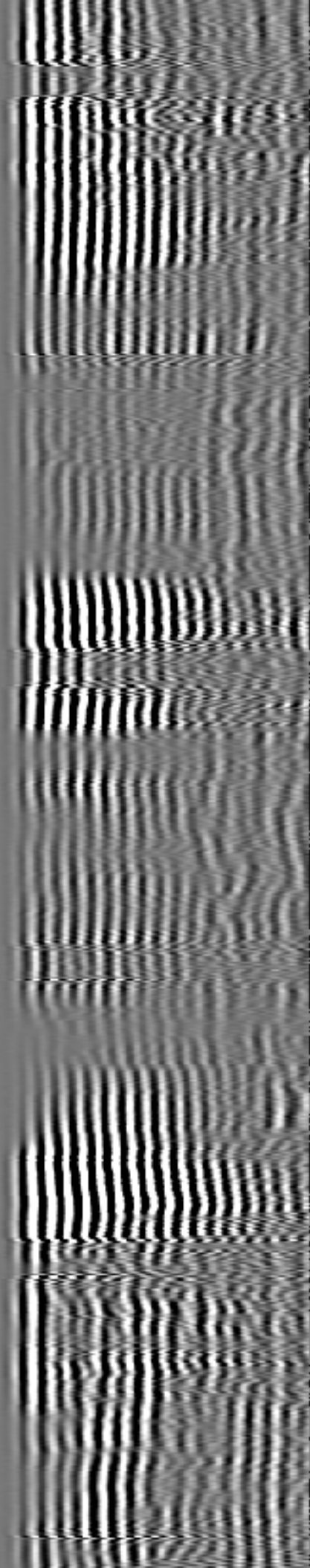
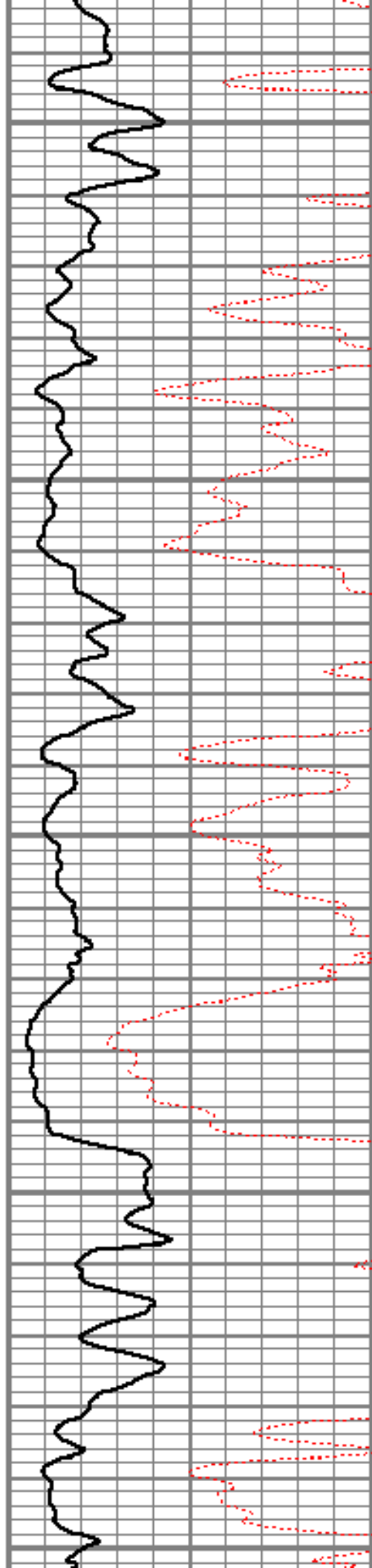
5250

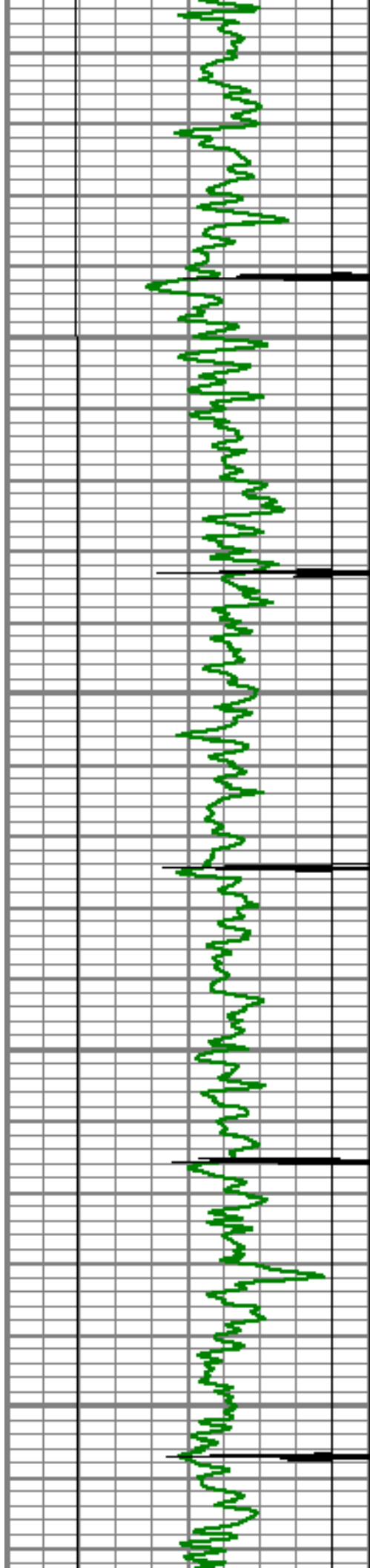
5300

5350

5400

5450



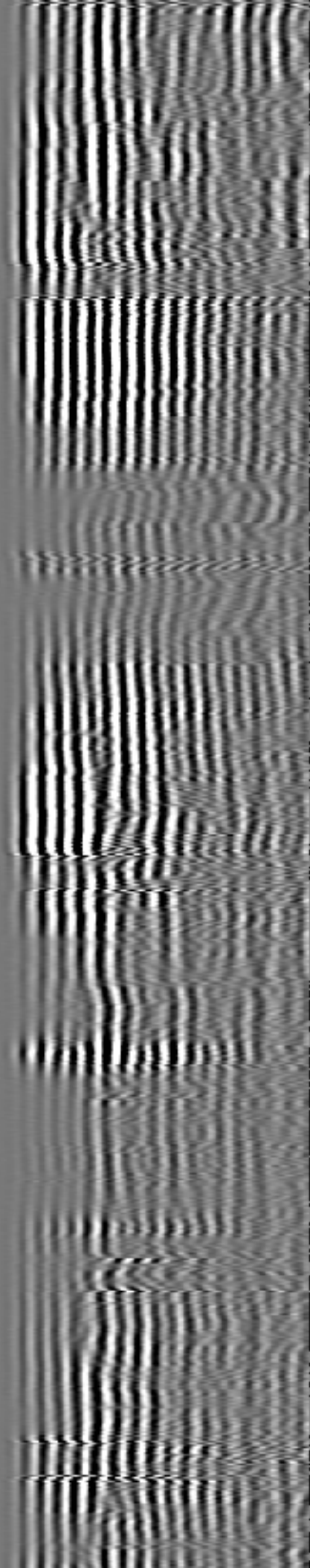
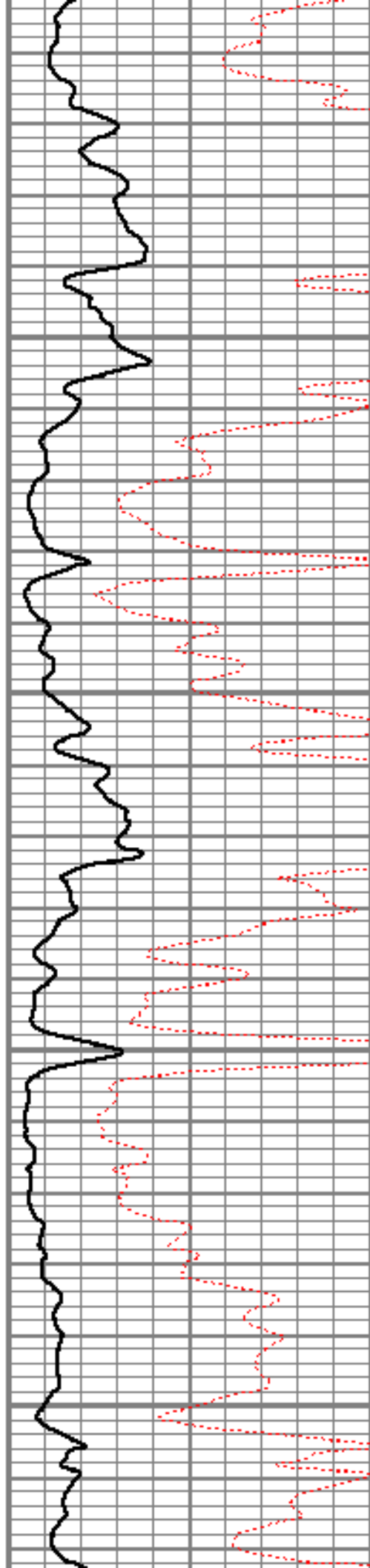


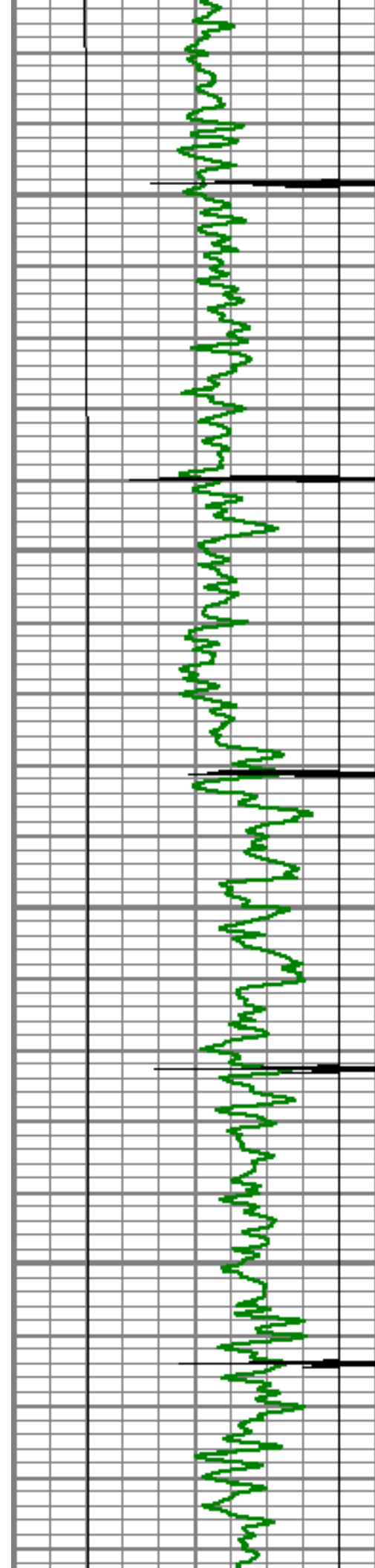
5500

5550

5600

5650



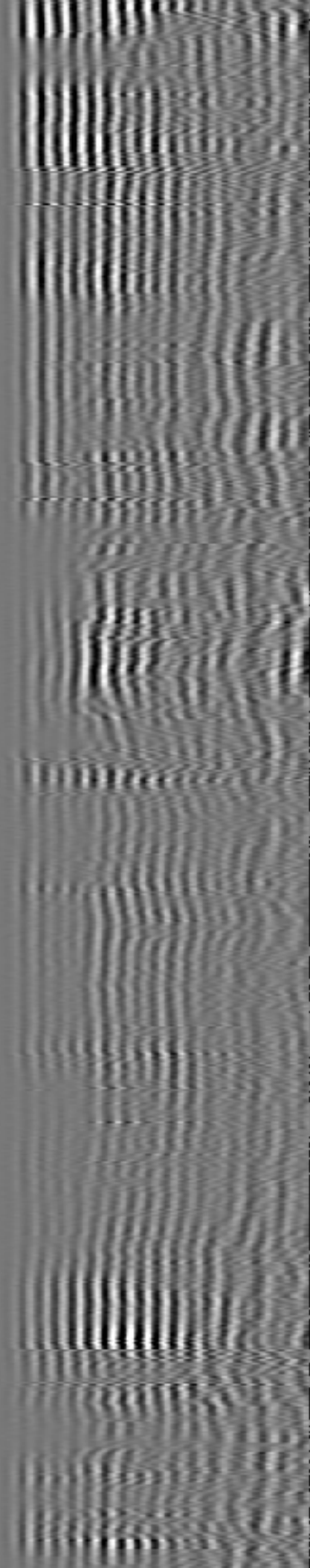
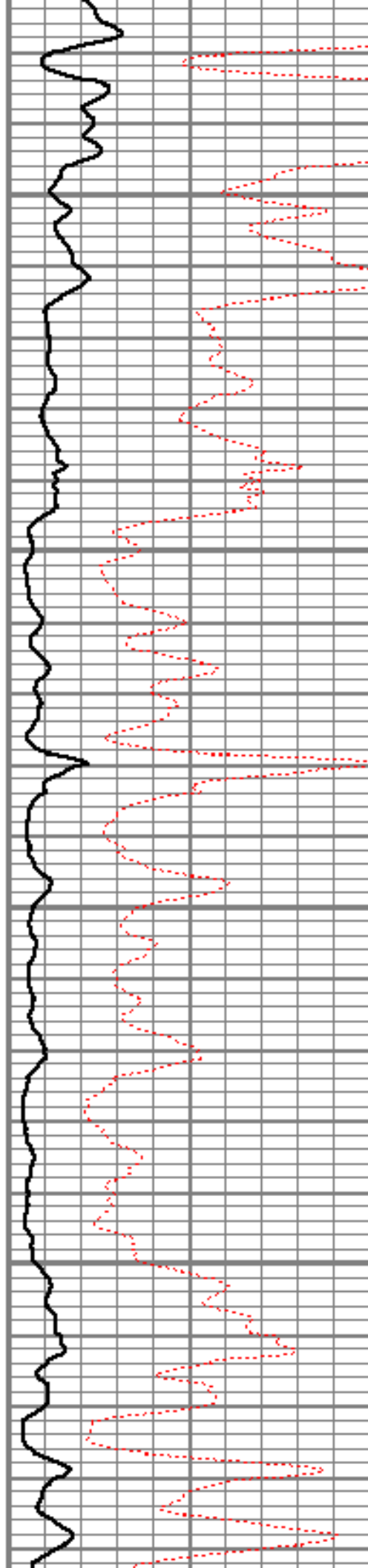


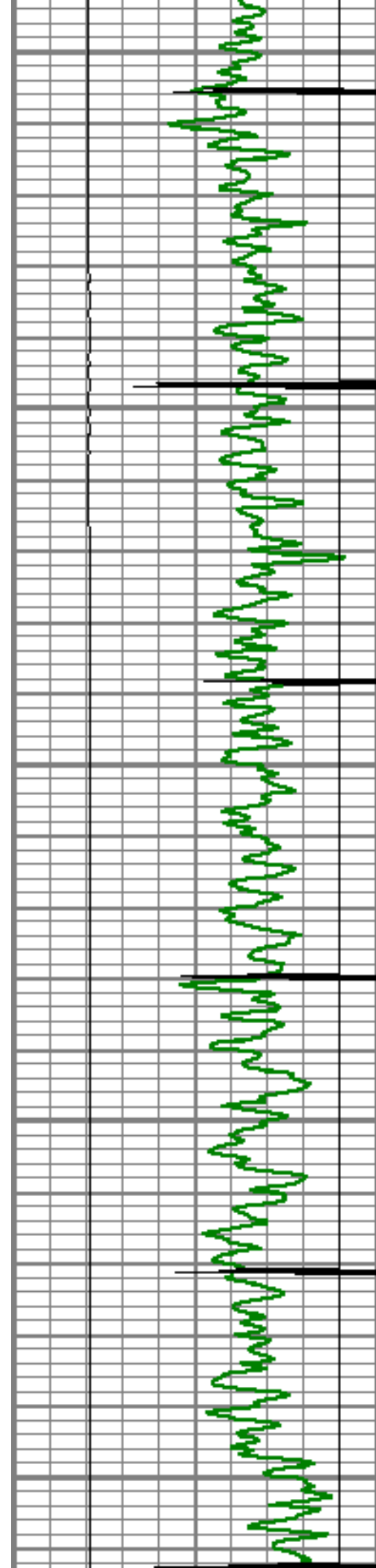
5700

5750

5800

5850





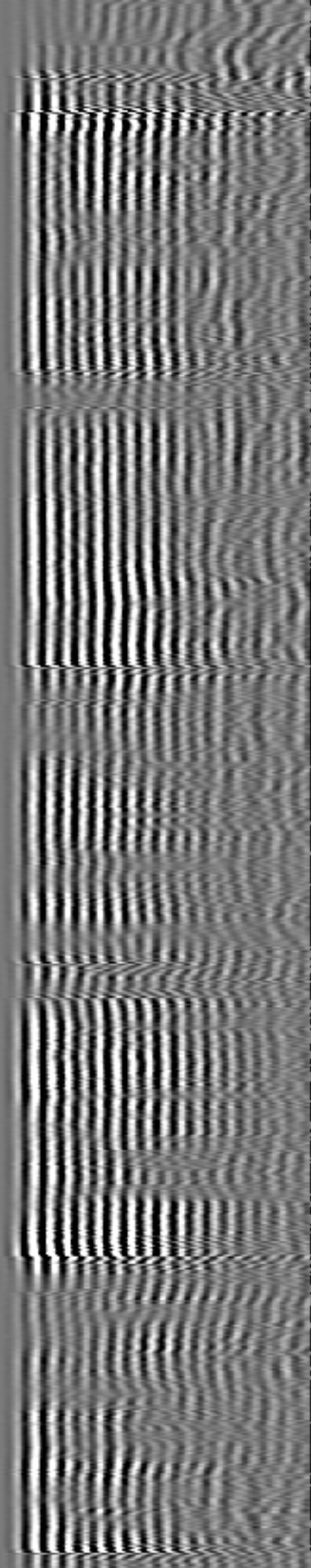
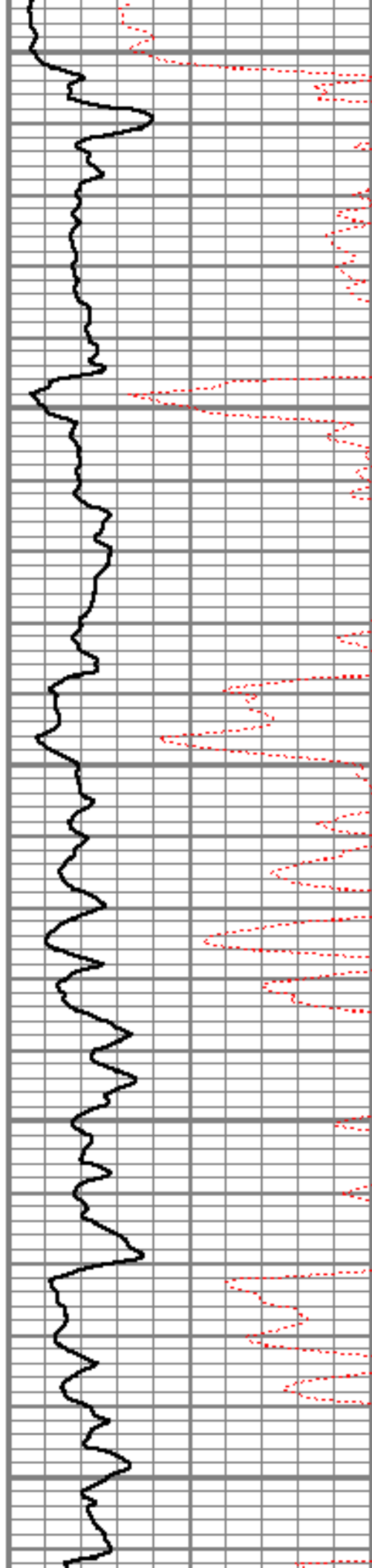
5900

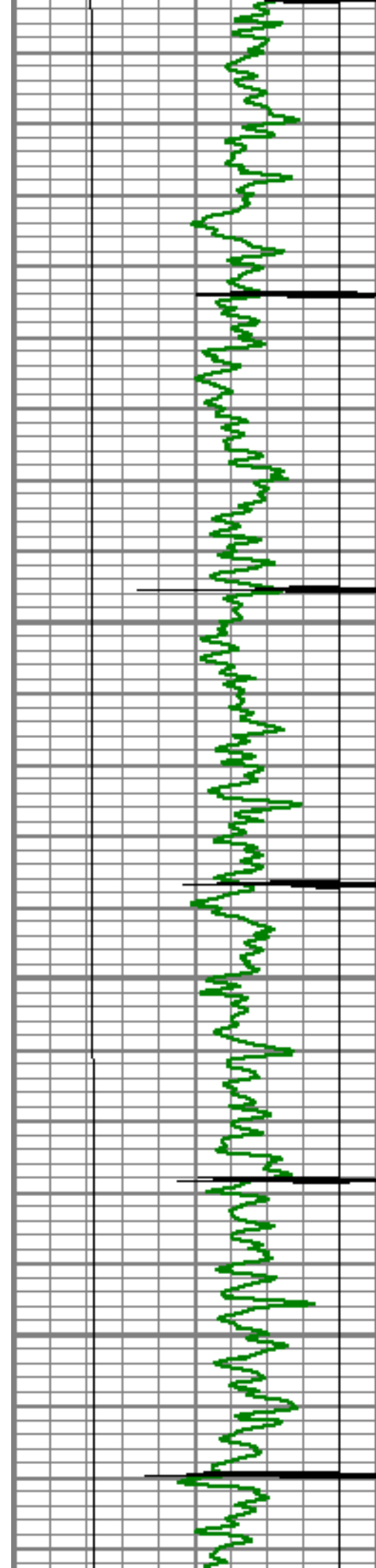
5950

6000

6050

6100



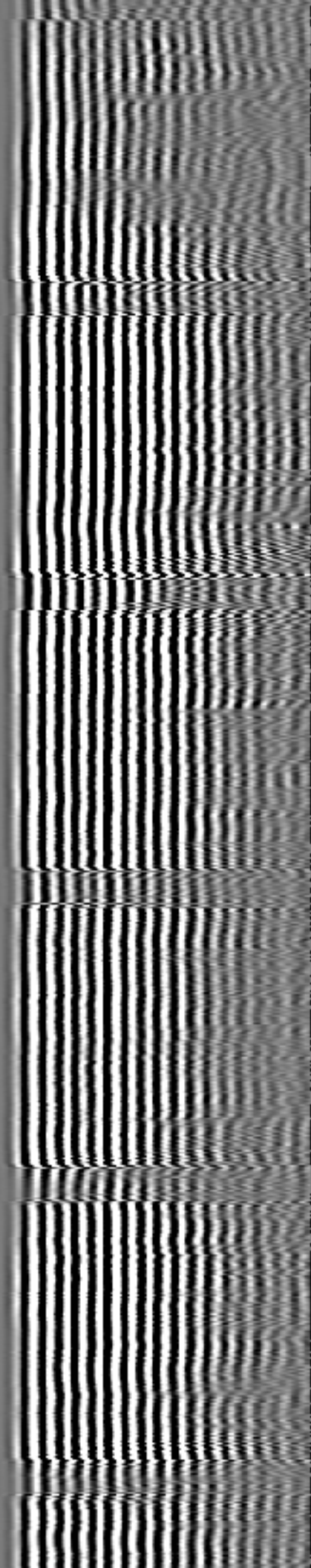
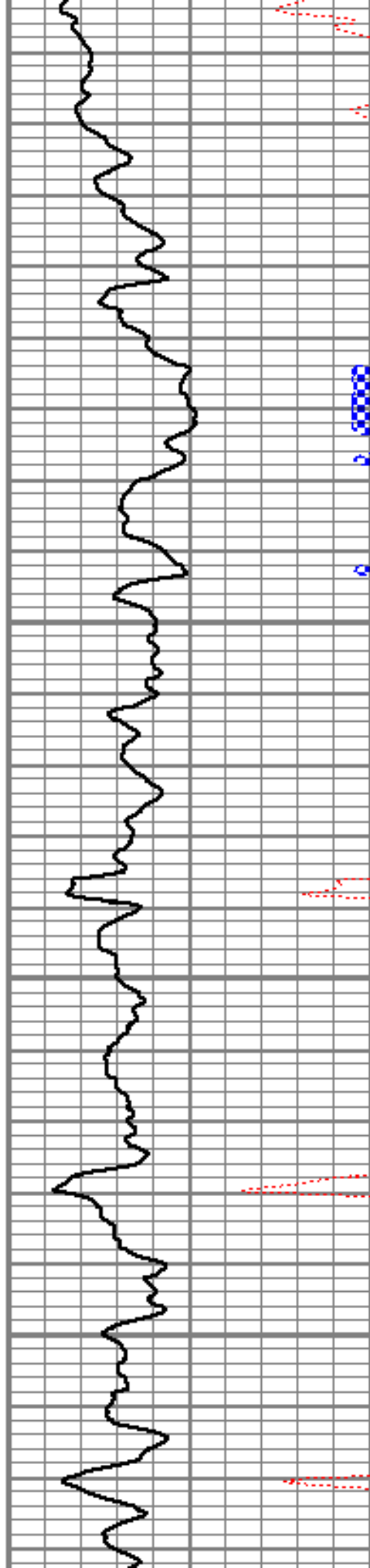


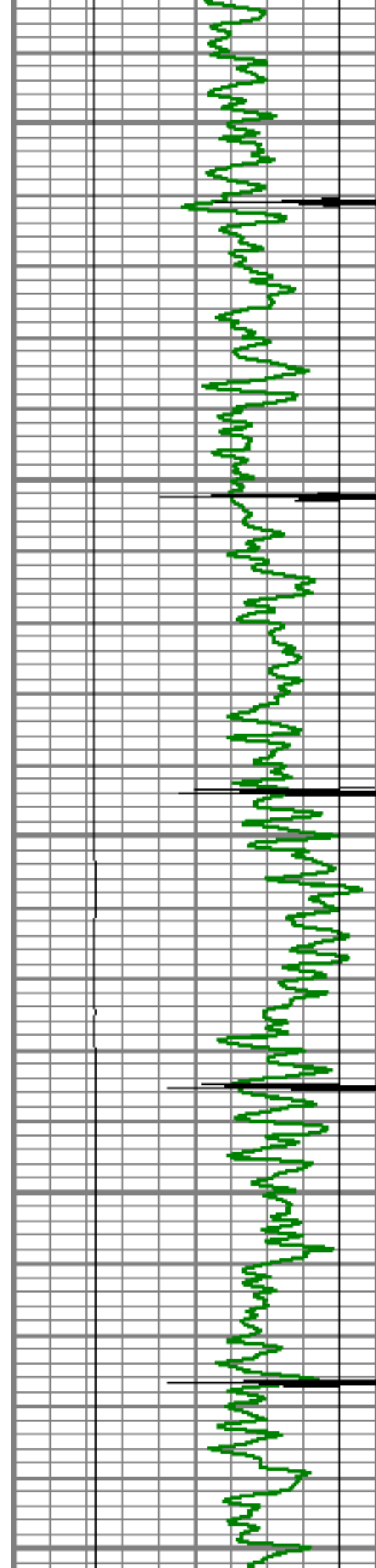
6150

6200

6250

6300





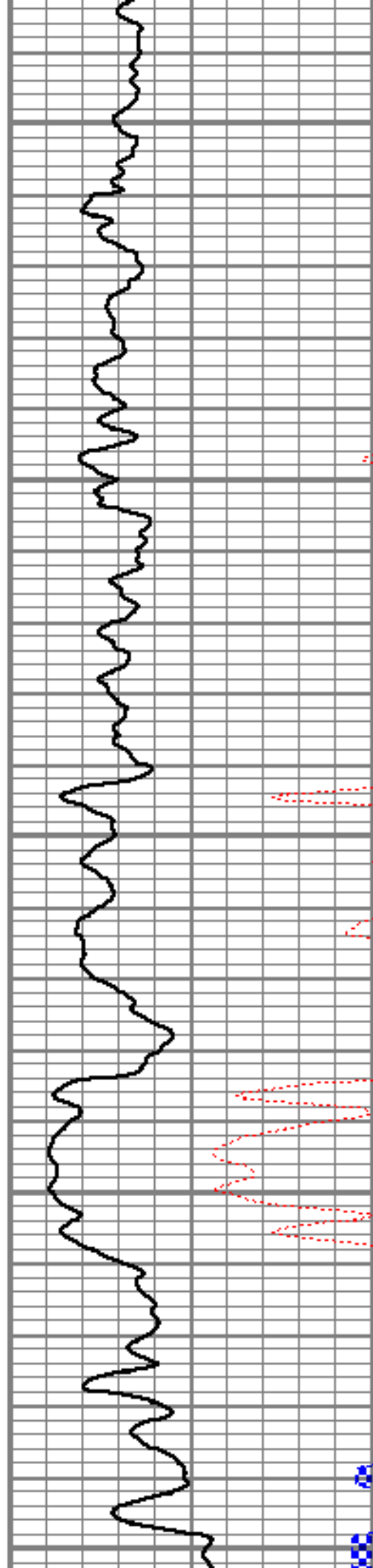
6350

6400

6450

6500

6550

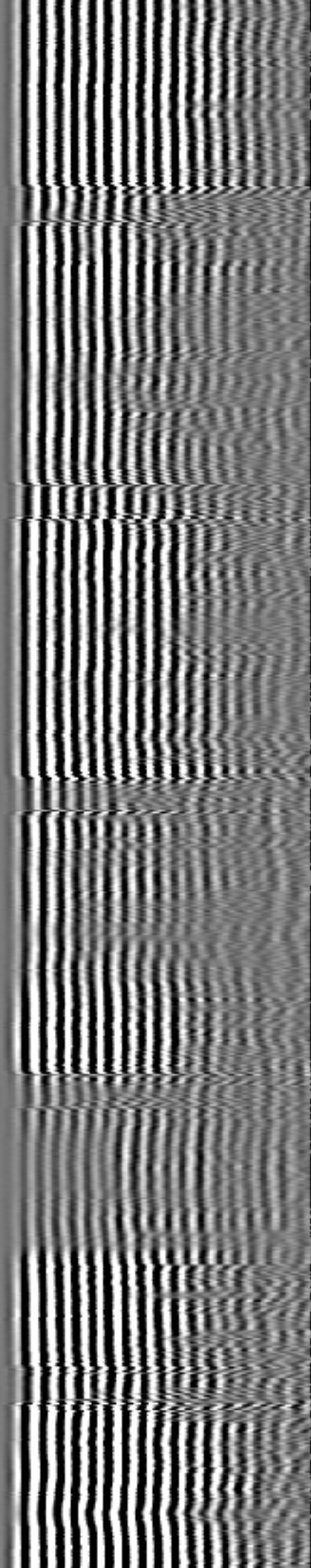


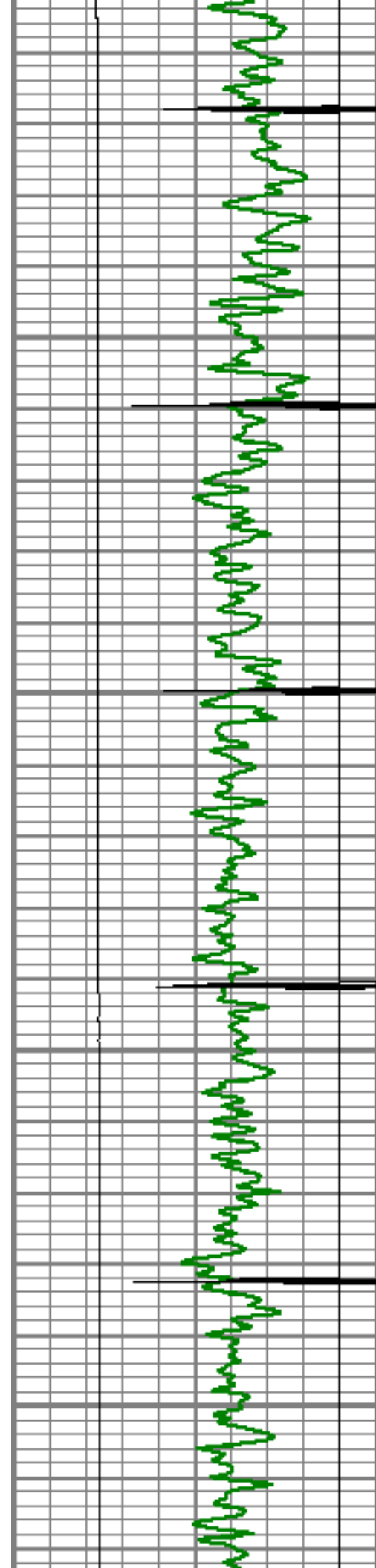
6400

6450

6500

6550



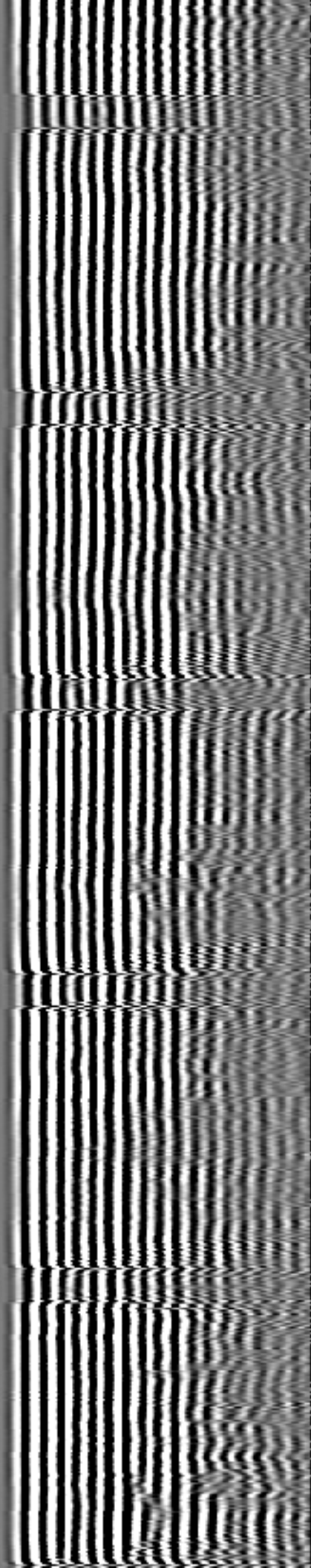
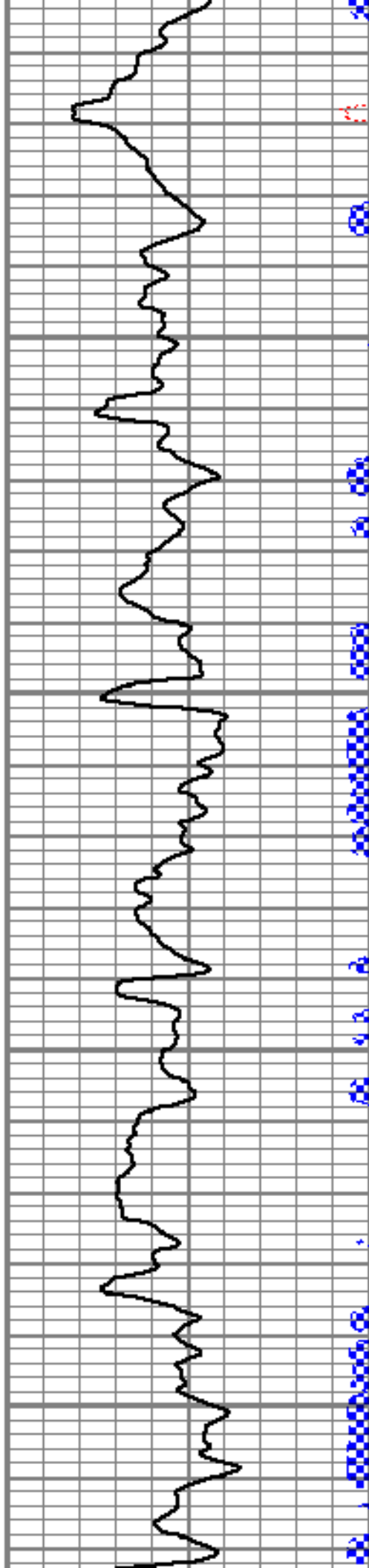


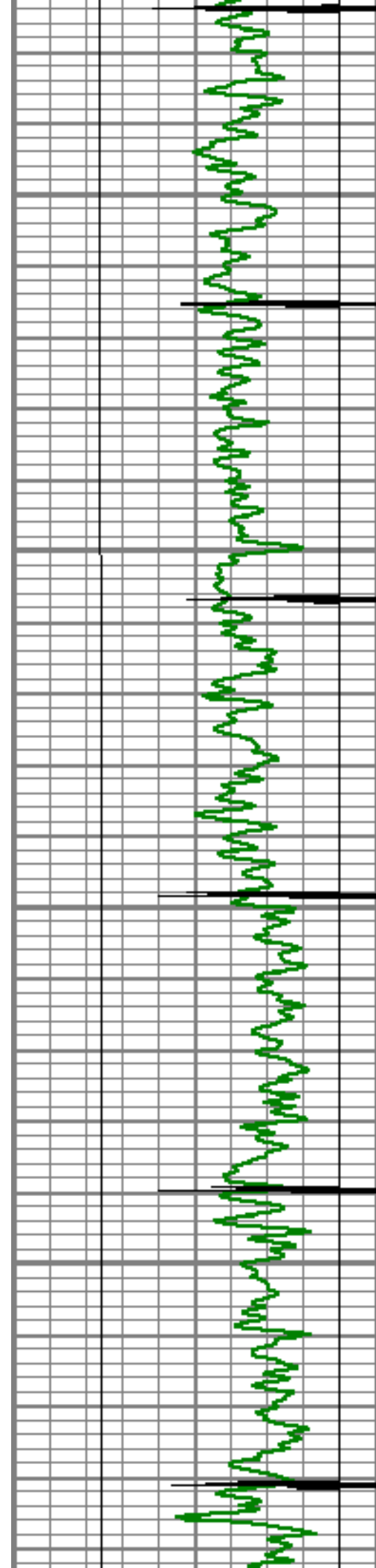
6600

6650

6700

6750



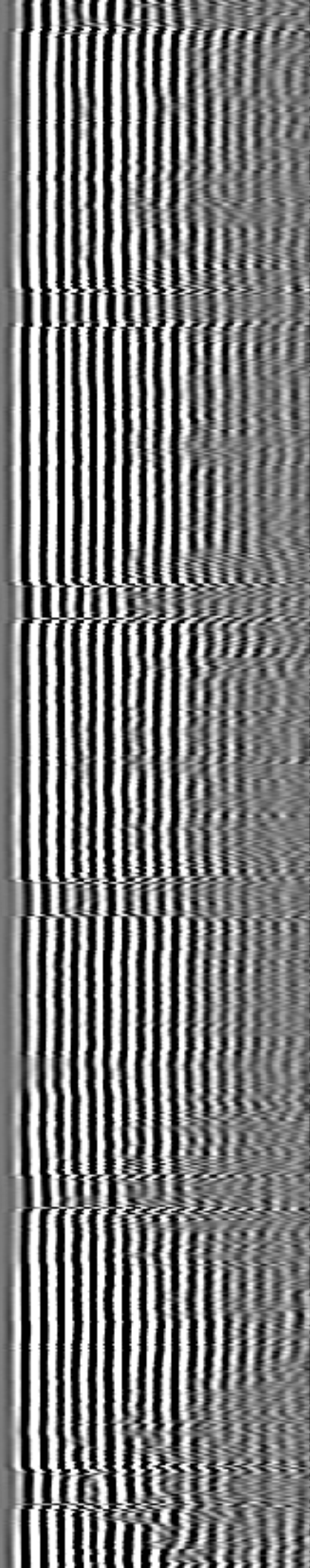
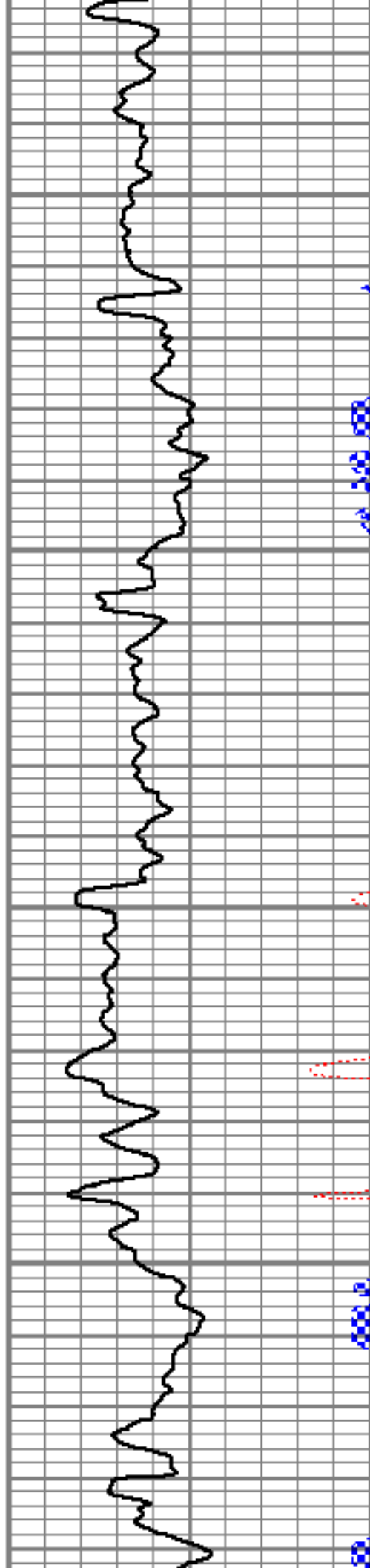


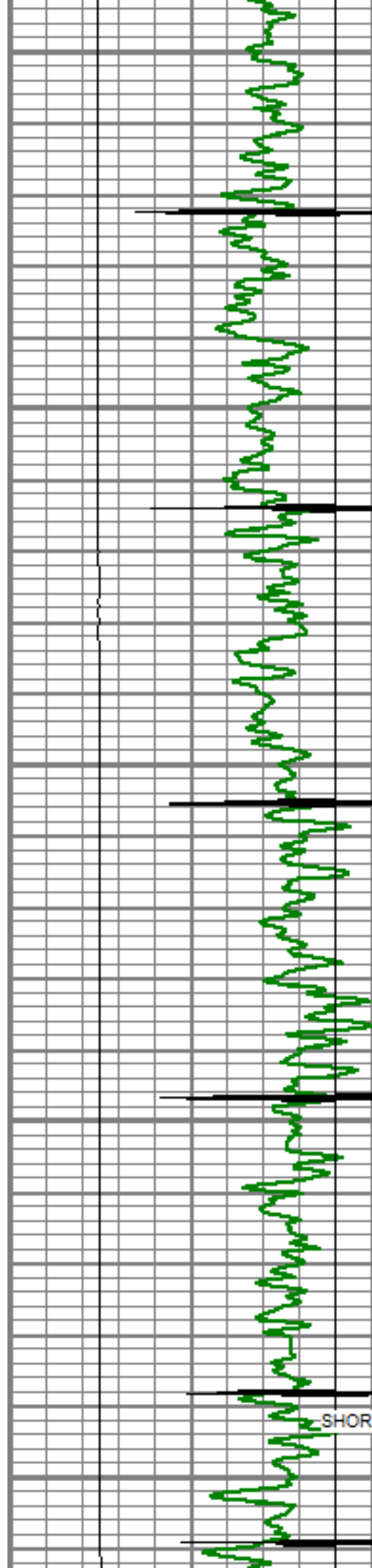
6800

6850

6900

6950





7000

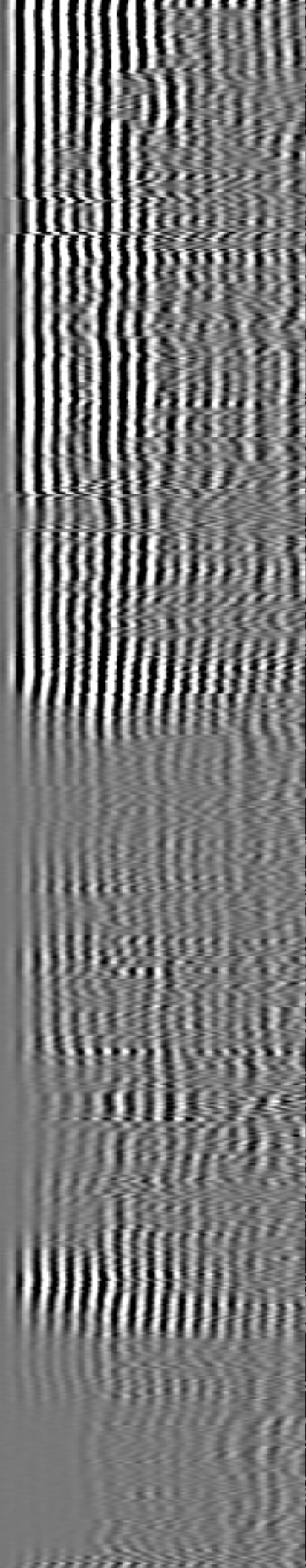
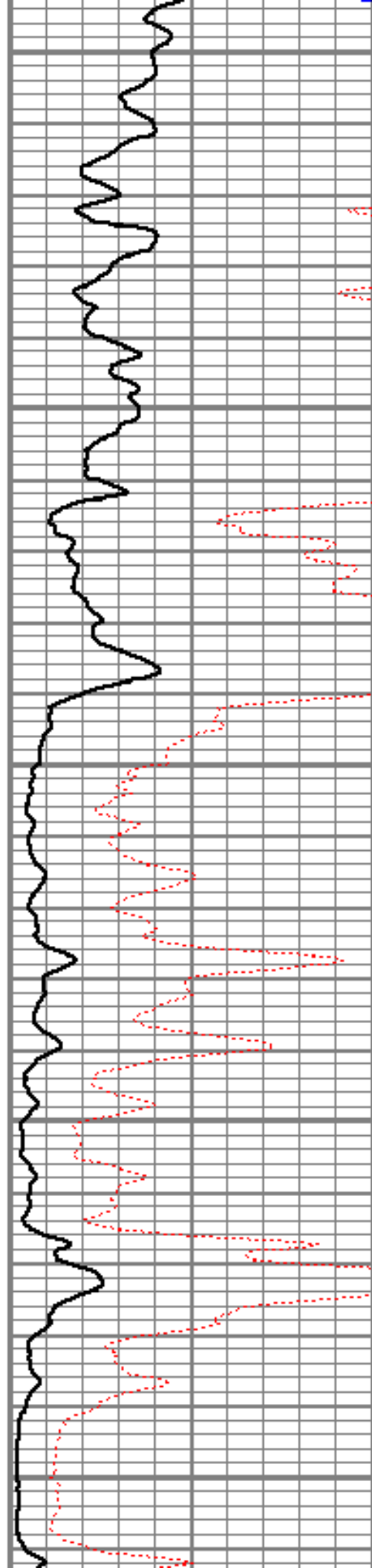
7050

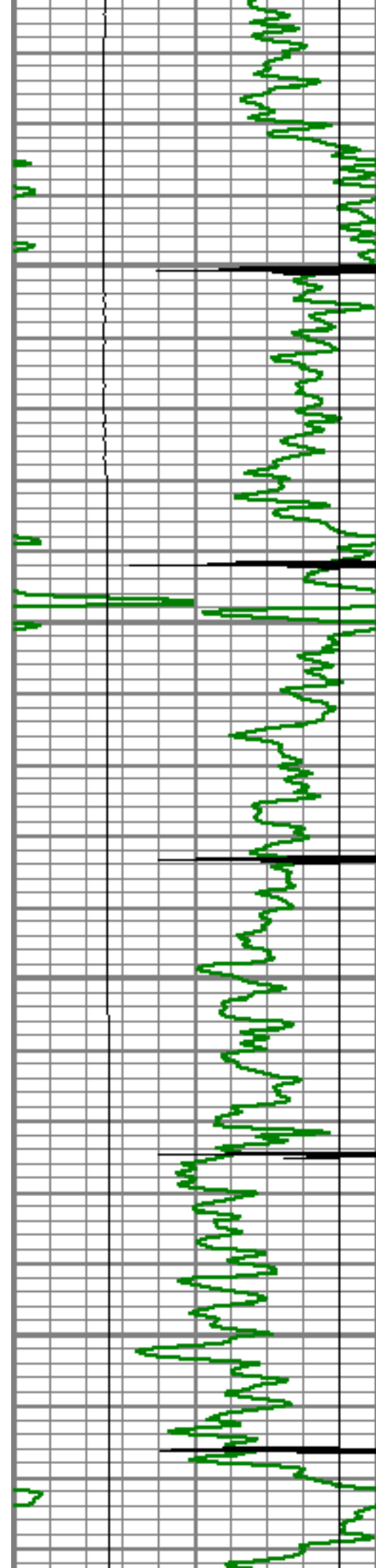
7100

7150

SHORT JOINT

7200



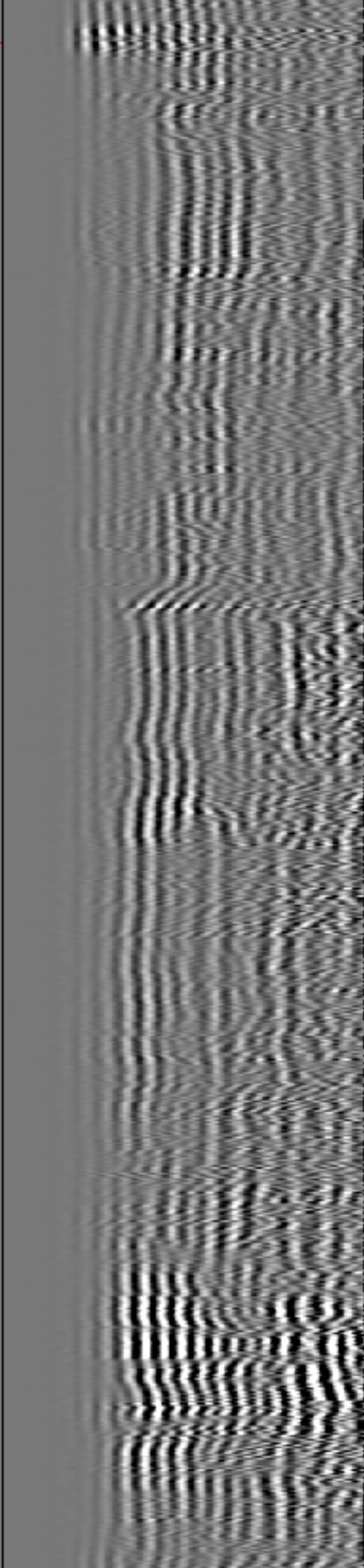
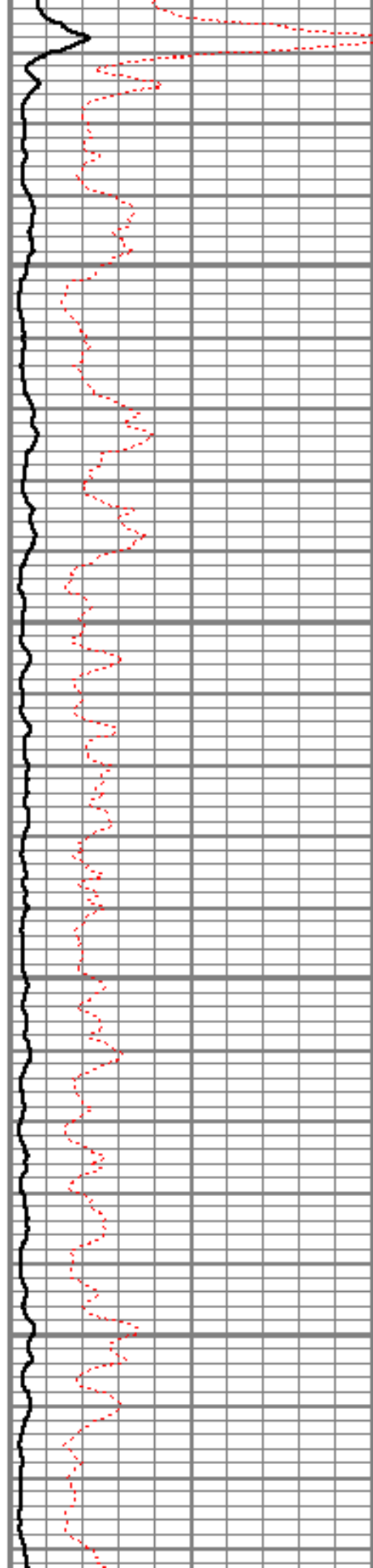


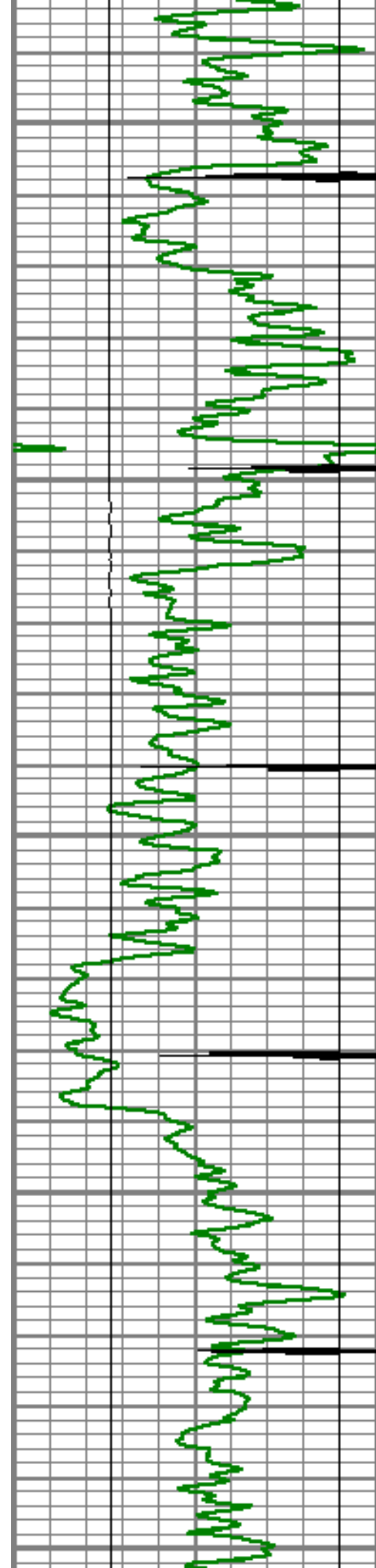
7250

7300

7350

7400





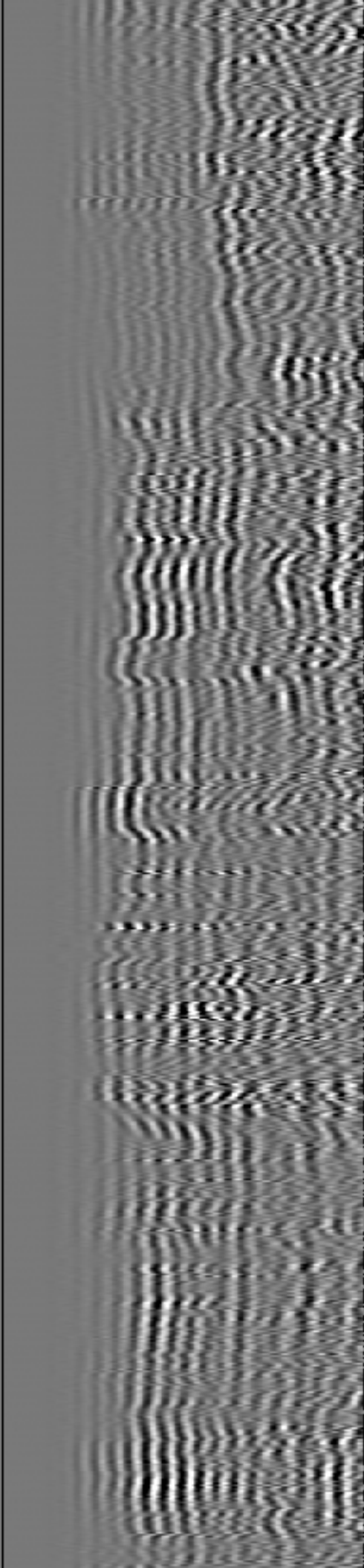
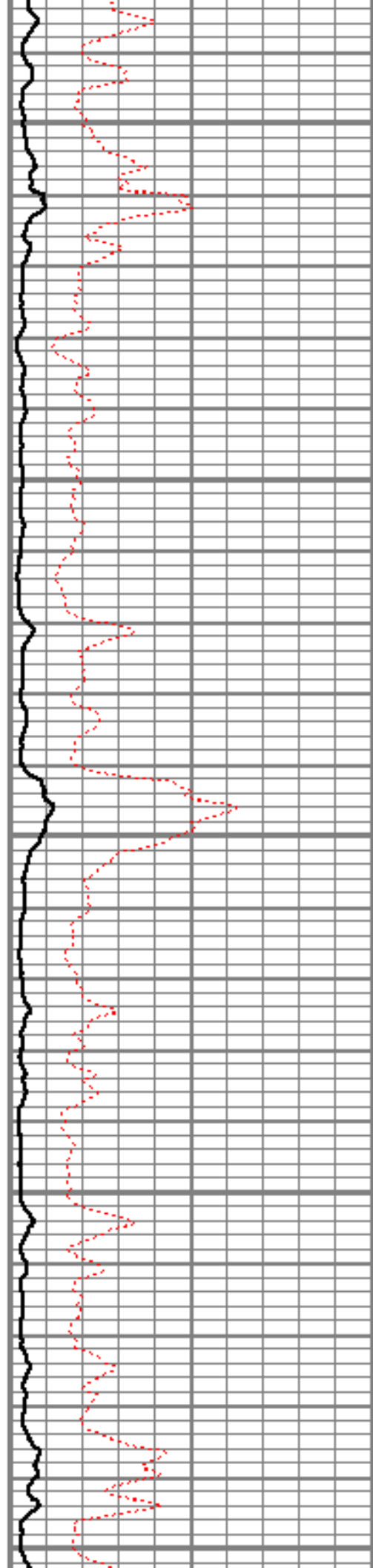
7450

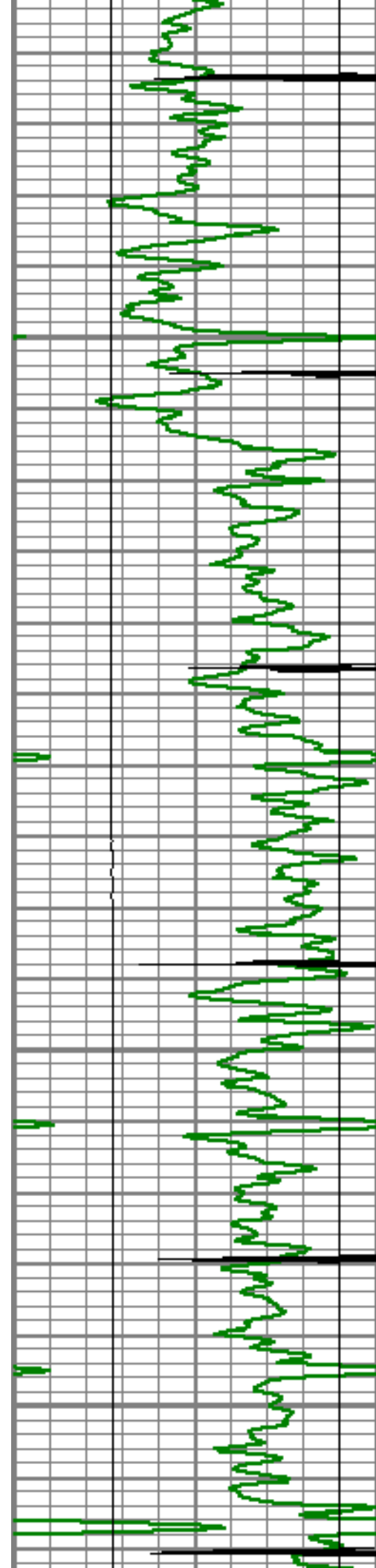
7500

7550

7600

7650



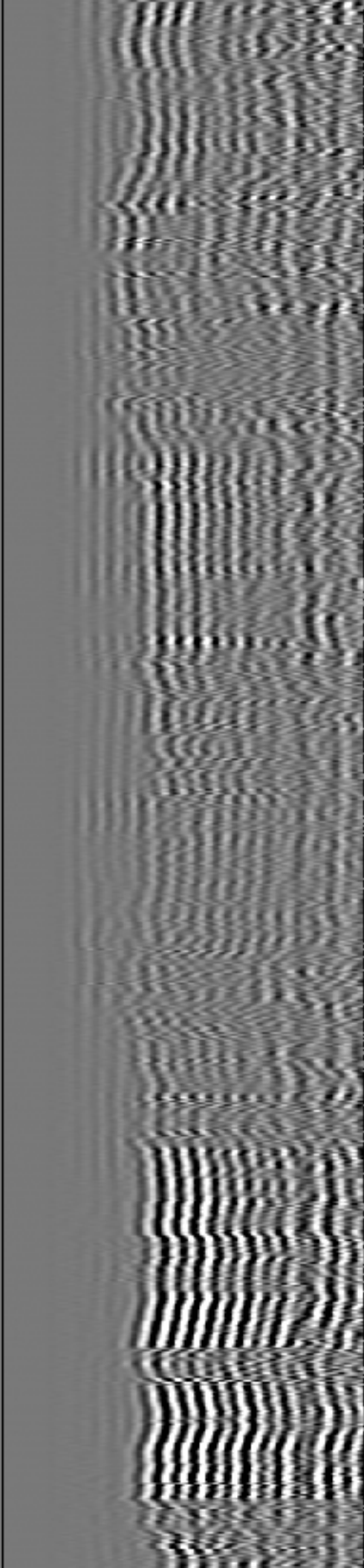
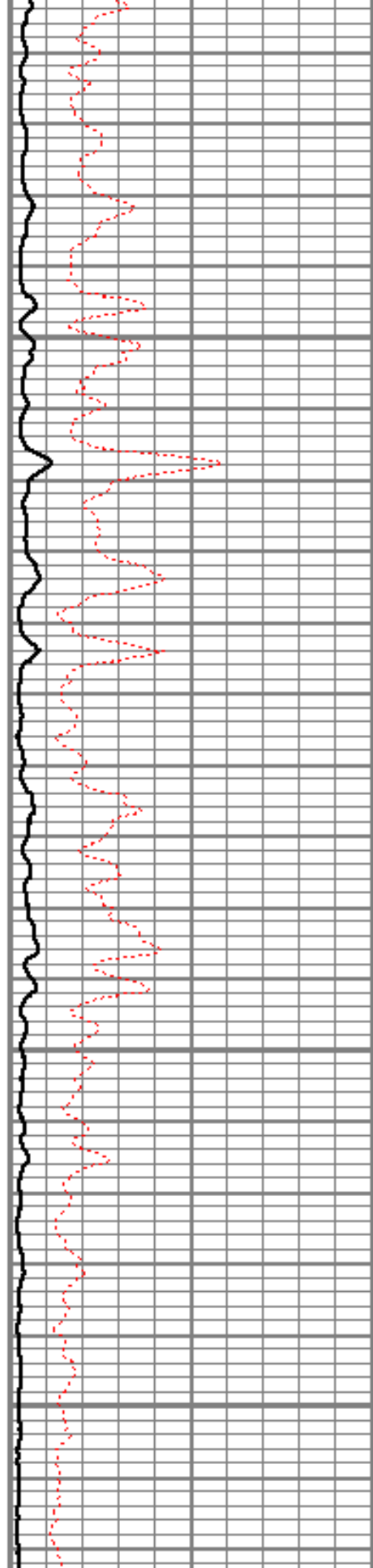


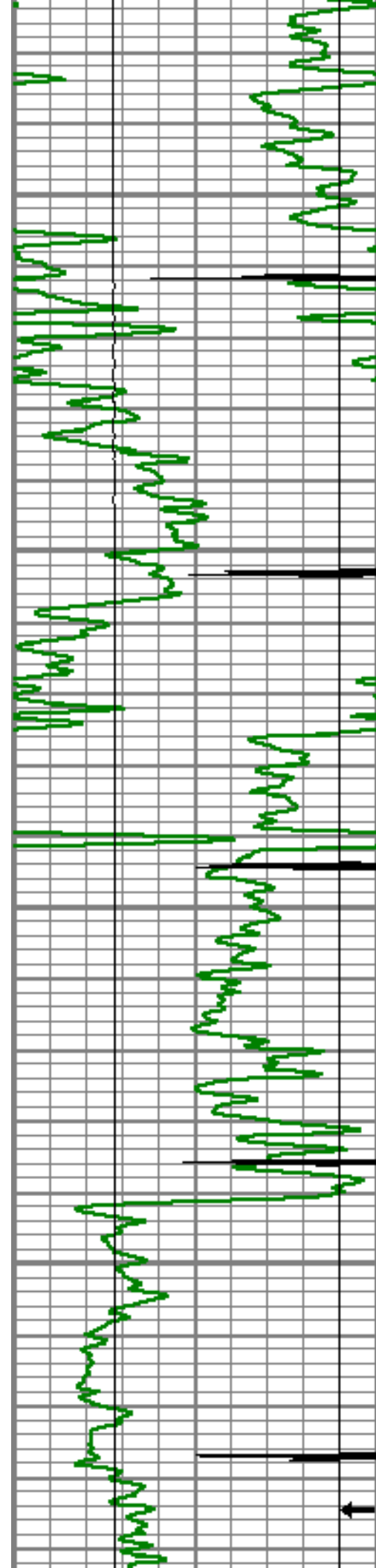
7700

7750

7800

7850





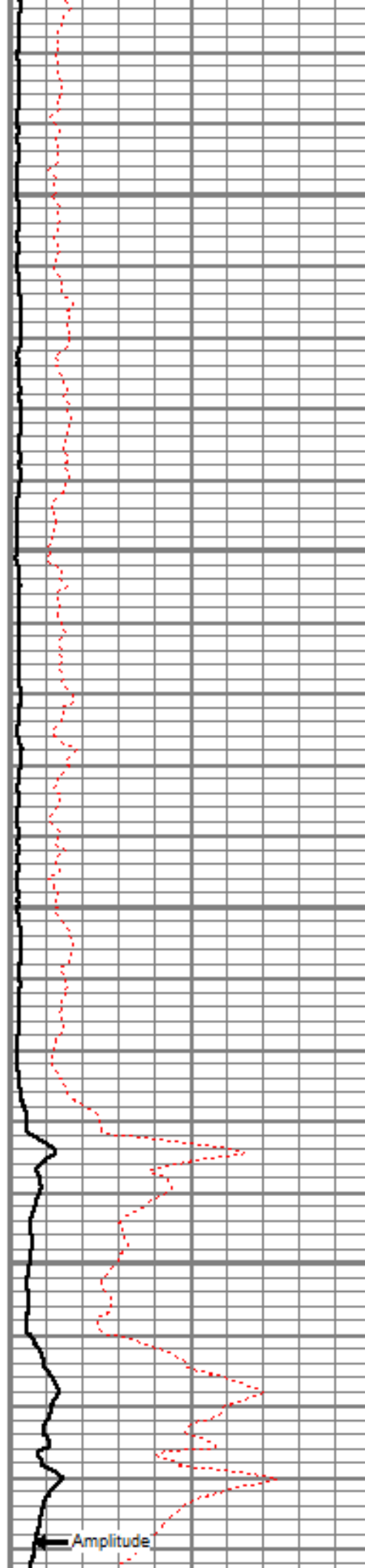
7900

7950

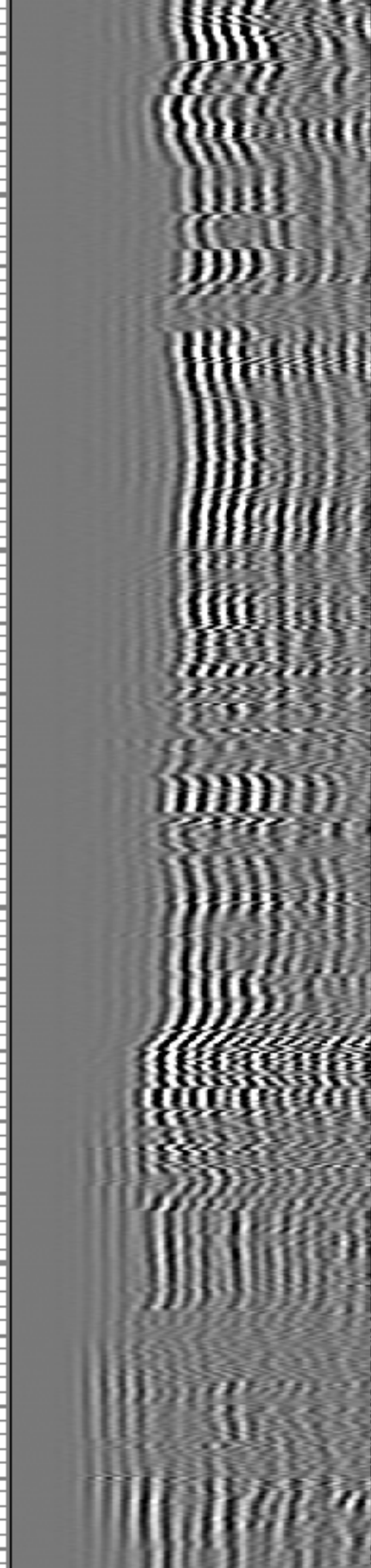
8000

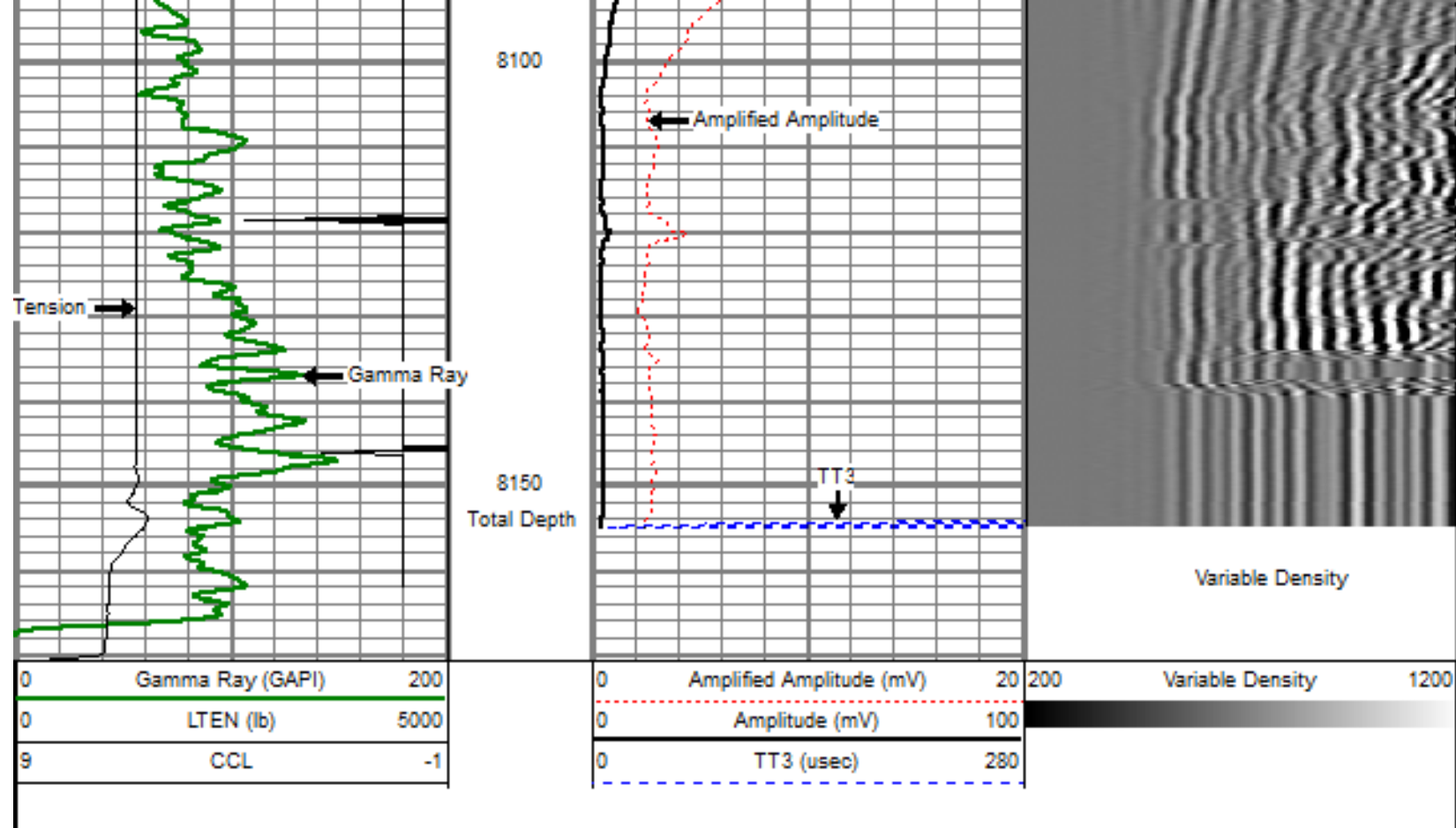
8050

← CCL



← Amplitude





Sensor	Offset (ft)	Schematic	Description	Len (ft)	OD (in)	Wt (lb)
			titan Titan Cable Head Go Pin.	1.02	1.44	1.50
			Centralizer-Probe (CENT-PROBE-1) Probe Bowspring Centralizer	2.88	2.75	10.00
WVF3	16.56		CBL-PRB_CBL_DIGITAL (PRB_CBL_DIG_28.77 1) Probe 2.75" Dual Receiver Bond		2.75	60.00
WVF5	15.56		Centralizer-Probe (CENT-PROBE-2)	2.88	2.75	10.00

			CENTRALIZER (CENT PROBE 2) Probe Bowspring Centralizer	2.00	2.75	10.00
CCL	8.21		CCL-PRB_CCL_2MAG (PRB_CCL_2MAG_02.02) Probe 2 Magnet CCL		2.75	
GR	3.63		GR-PROBE_GR (PRB_GR_275_01) Probe stand alone Gamma Ray Tool	4.54	2.75	30.00
TEMP	0.17		TEMP-Comprobe (TEMP_CMPRB_1375_0) Positive pulse Temp tool	2.88	1.38	15.00
Dataset: maier 31-28.db: field/well/run1/pass7 Total Length: 24.98 ft Total Weight: 126.50 lb O.D. 2.75 in						



Company ENCANA OIL & GAS (USA) INC.
 Well MAIER 31-28
 Field WATTENBERG
 County WELD
 State COLORADO