

CEMENT BOND LOG



Mesa Wireline

| | | | |
|----------------------------|--|-----------------------------|--|
| Company | | ENCANA OIL & GAS (USA) INC. | |
| Well | | MAIER 4-2-28 | |
| Field | | WATTENBERG | |
| County | | WELD | |
| State | | COLORADO | |
| Company | | ENCANA OIL & GAS (USA) INC. | |
| Well | | MAIER 4-2-28 | |
| Field | | WATTENBERG | |
| County | | WELD | |
| State | | COLORADO | |
| Location: | | API #: 05-123-35604-0000 | |
| SHL: 1769' FNL & 2190' FEL | | Other Services | |
| BHL: 1150' FNL & 2587' FEL | | NONE | |
| SEC: 28 TWP: 2N RGE: 66W | | Elevation | |
| Permanent Datum | | GROUND LEVEL | |
| Log Measured From | | KELLY BUSHING = 12' | |
| Drilling Measured From | | KELLY BUSHING | |
| K.B. 4943' | | D.F. 4942' | |
| G.L. 4931' | | | |

| | | | | | | | |
|------------------------|--------------|------|---------------|------|--------|------|--------|
| Date | JULY 13 2012 | | | | | | |
| Run Number | ONE | | | | | | |
| Depth Driller | 8100' | | | | | | |
| Depth Logger | 8082' | | | | | | |
| Bottom Logged Interval | 8082' | | | | | | |
| Top Log Interval | 4000' / 800' | | | | | | |
| Open Hole Size | 7.875" | | | | | | |
| Type Fluid | WATER | | | | | | |
| Density / Viscosity | ~ 8.3# | | | | | | |
| Max. Recorded Temp. | 261 DEG F | | | | | | |
| Estimated Cement Top | 4204' | | | | | | |
| Time Well Ready | N/A | | | | | | |
| Time Logger on Bottom | N/A | | | | | | |
| Equipment Number | W112/PRD02 | | | | | | |
| Location | AULT | | | | | | |
| Recorded By | C.PACE | | | | | | |
| Witnessed By | T.MAJORS | | | | | | |
| Borehole Record | | | Tubing Record | | | | |
| Run Number | Bit | From | To | Size | Weight | From | To |
| ONE | 12.25" | 0' | 900' | | | | |
| TWO | 7.875" | 900' | 8100' | | | | |
| | | | | | | | |
| | | | | | | | |
| Casing Record | Size | | Wgt/Ft | | Top | | Bottom |
| Surface String | 8.625" | | 24# | | 0' | | 900' |
| Prot. String | | | | | | | |
| Production String | 4.5" | | 11.6# | | 0' | | 8087' |
| Liner | | | | | | | |

<<< Fold Here >>>

All interpretations are opinions based on inferences from electrical or other measurements and we cannot and do not guarantee the accuracy or correctness of any interpretation, and we shall not, except in the case of gross or willful negligence on our part, be liable or responsible for any loss, costs, damages, or expenses incurred or sustained by anyone resulting from any interpretation made by any of our officers, agents or employees. These interpretations are also subject to our general terms and conditions set out in our current Price Schedule.

Comments

LOG NOT CORRELATED TO ANY OTHER LOGS

SHORT JOINT @ 7156' - 7175'

WE APPRECIATE YOUR BUSINESS, MESA WIRELINE LLC, GRAND JUNCTION CO. (970) 257-0458



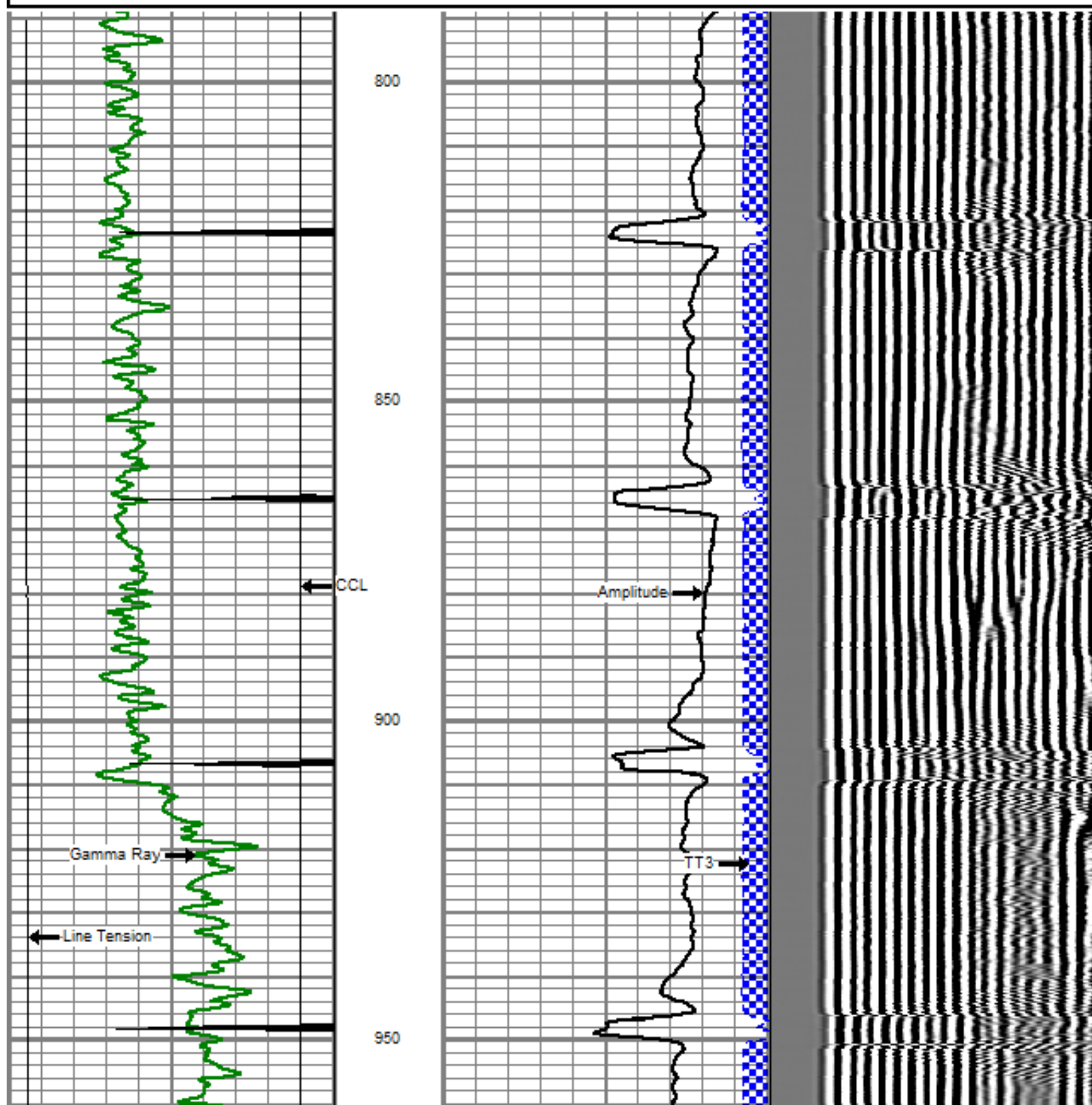
UPPER PASS

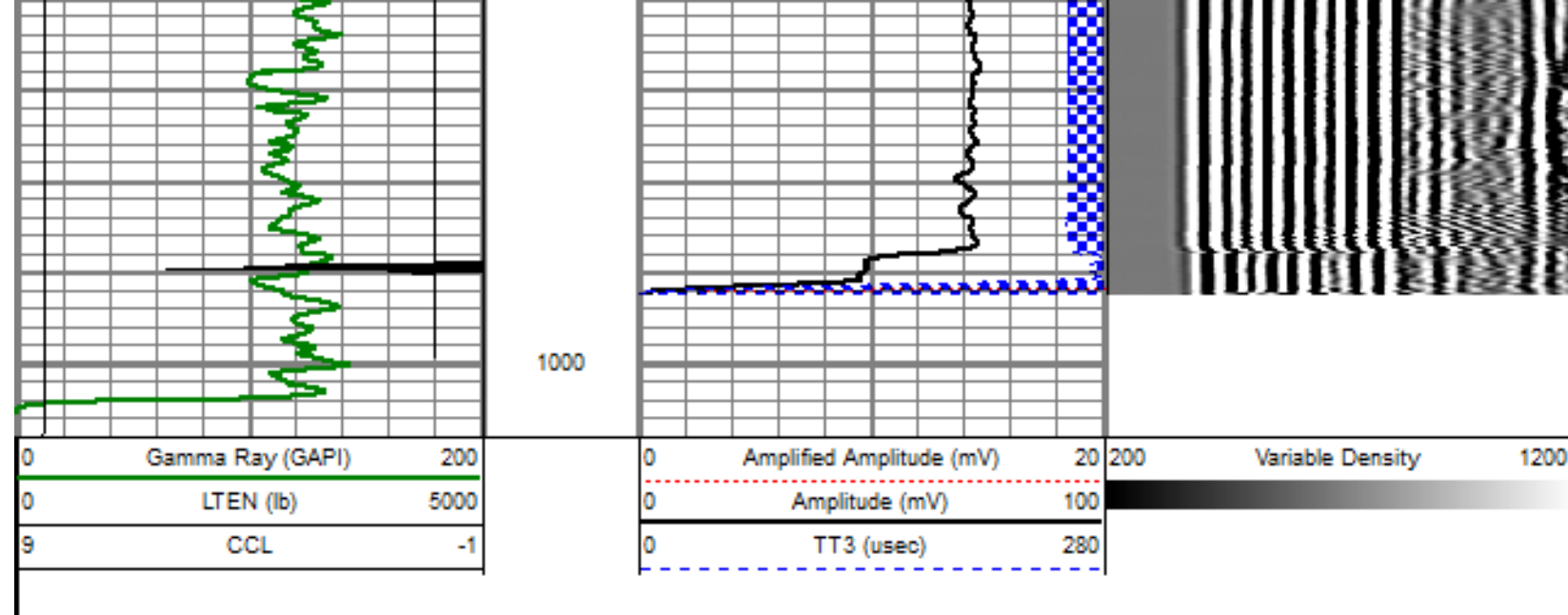
Database File: maier 4-2-28.db
Dataset Pathname: pass6
Presentation Format: dobl_prb
Dataset Creation: Sat Jul 14 09:47:05 2012 by Log SCH 110930
Charted by: Depth in Feet scaled 1:240

| | | |
|---|------------------|------|
| 0 | Gamma Ray (GAPI) | 200 |
| 0 | LTEN (lb) | 5000 |
| 9 | CCL | -1 |

| | | |
|---|--------------------------|-----|
| 0 | Amplified Amplitude (mV) | 20 |
| 0 | Amplitude (mV) | 100 |
| 0 | TT3 (usec) | 280 |

200 Variable Density 1200

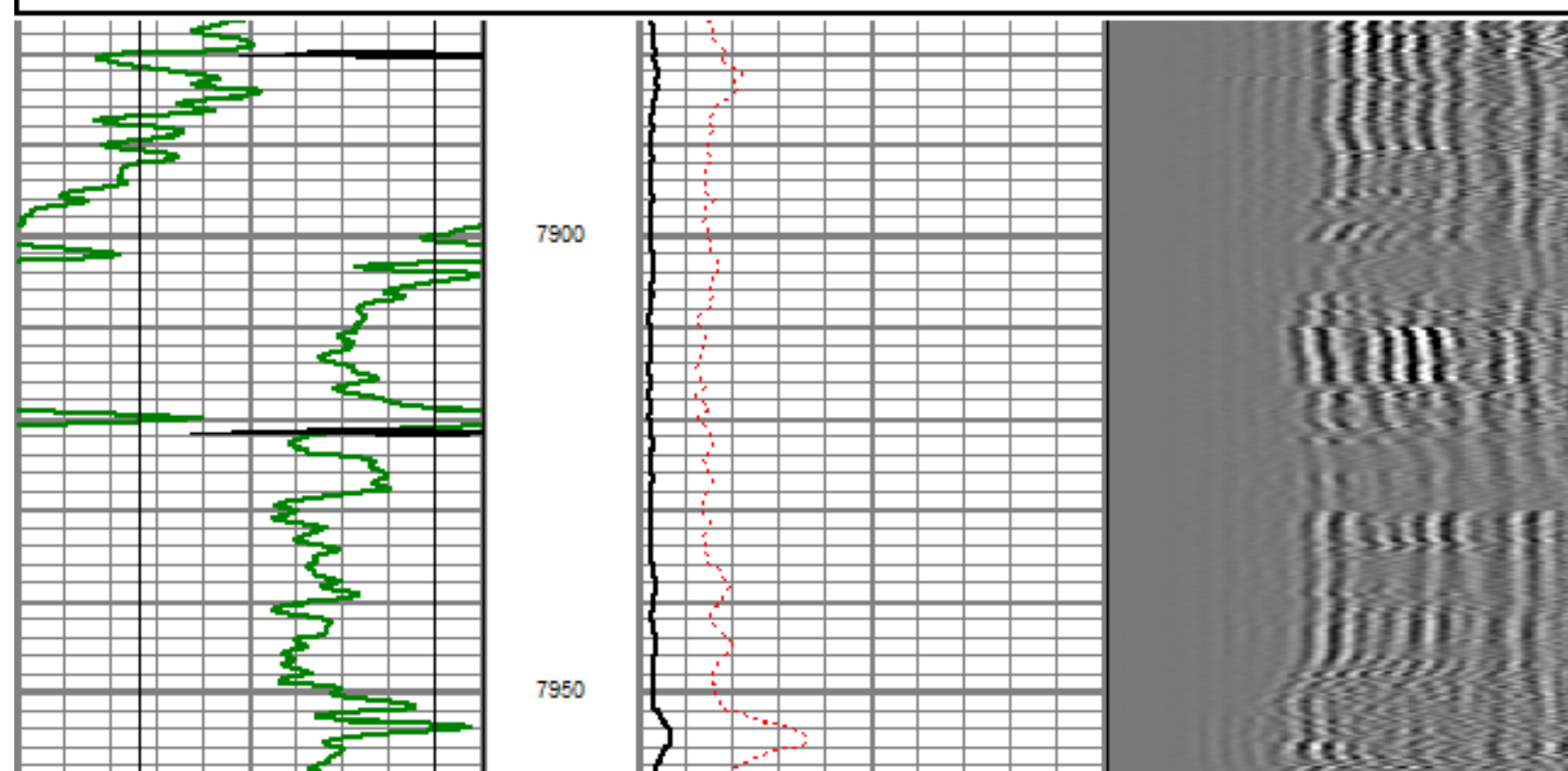
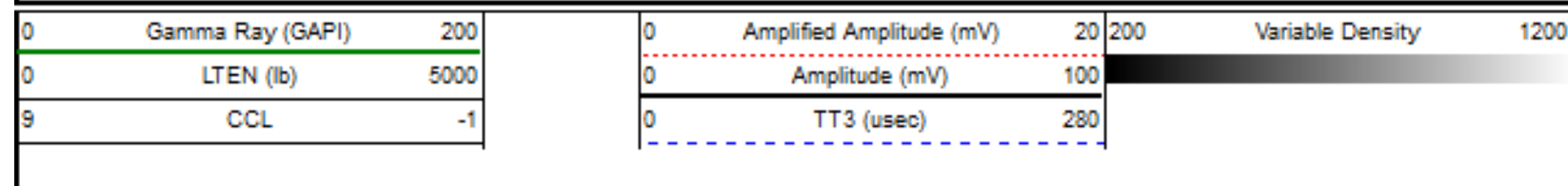


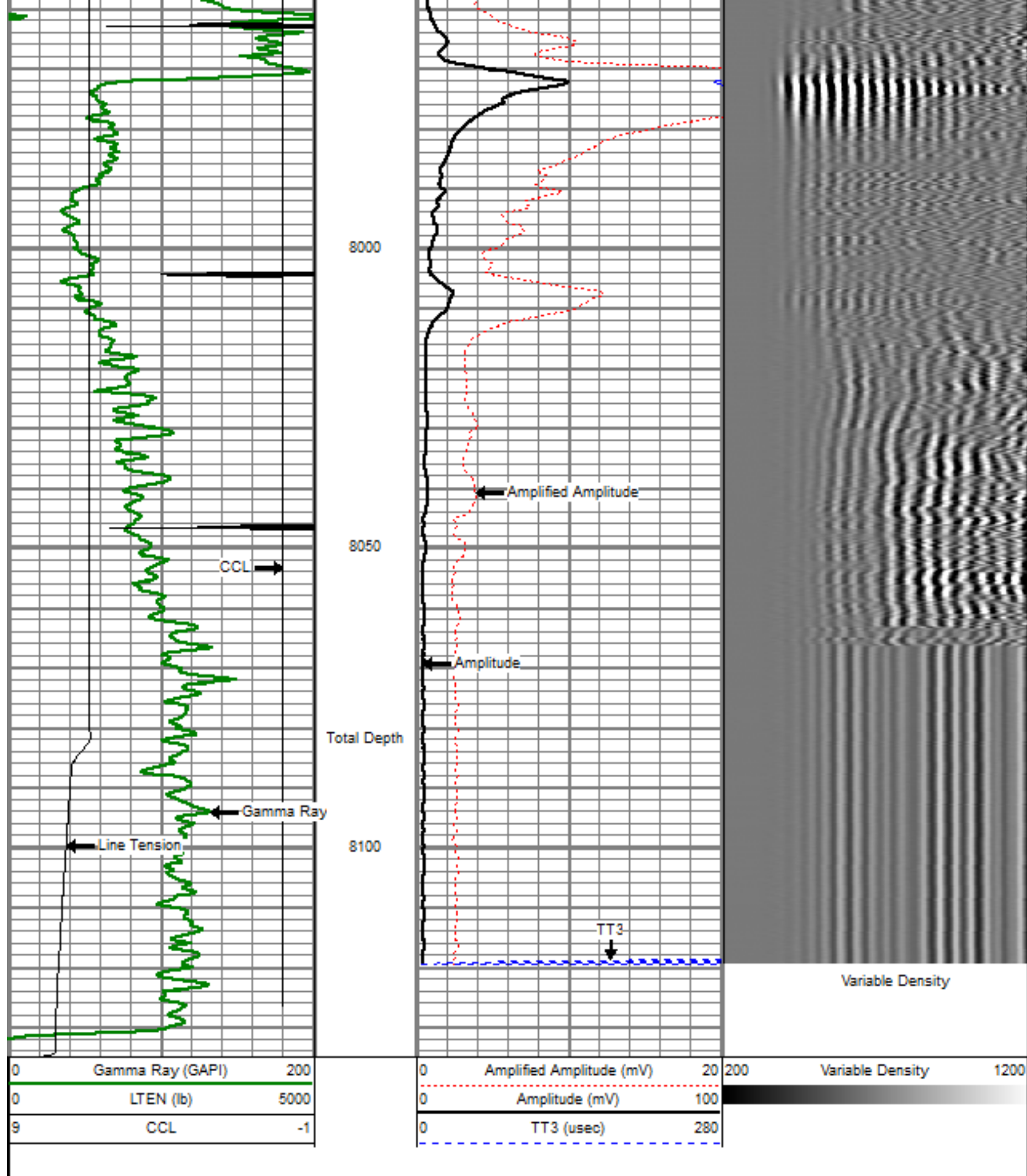


REPEAT PASS

5" = 100'

Database File: maier 4-2-28.db
 Dataset Pathname: pass4
 Presentation Format: dcbl_prb
 Dataset Creation: Sat Jul 14 08:26:14 2012 by Log SCH 110930
 Charted by: Depth in Feet scaled 1:240





MAIN PASS

5" = 100'

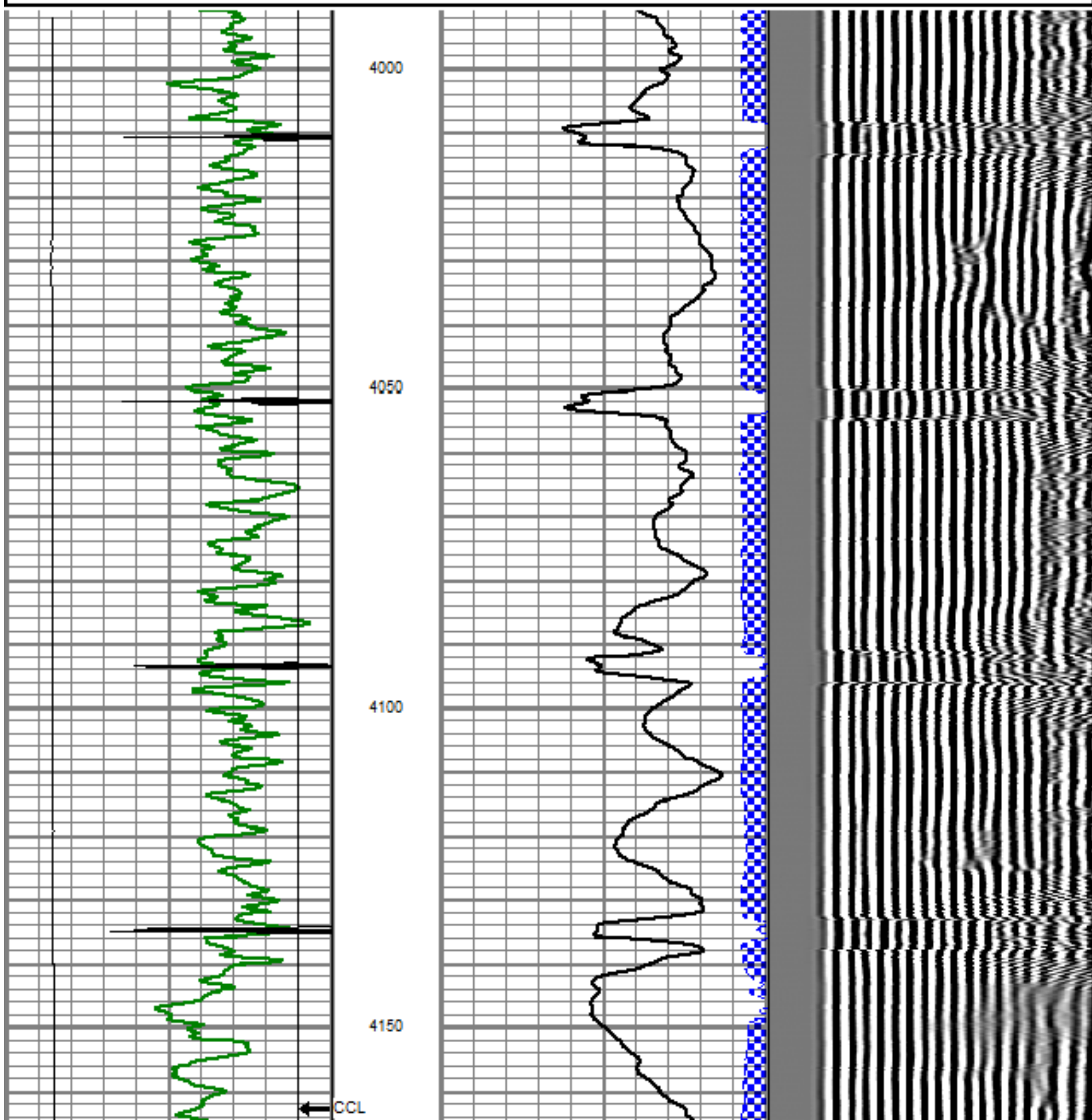
Mesa Wireline

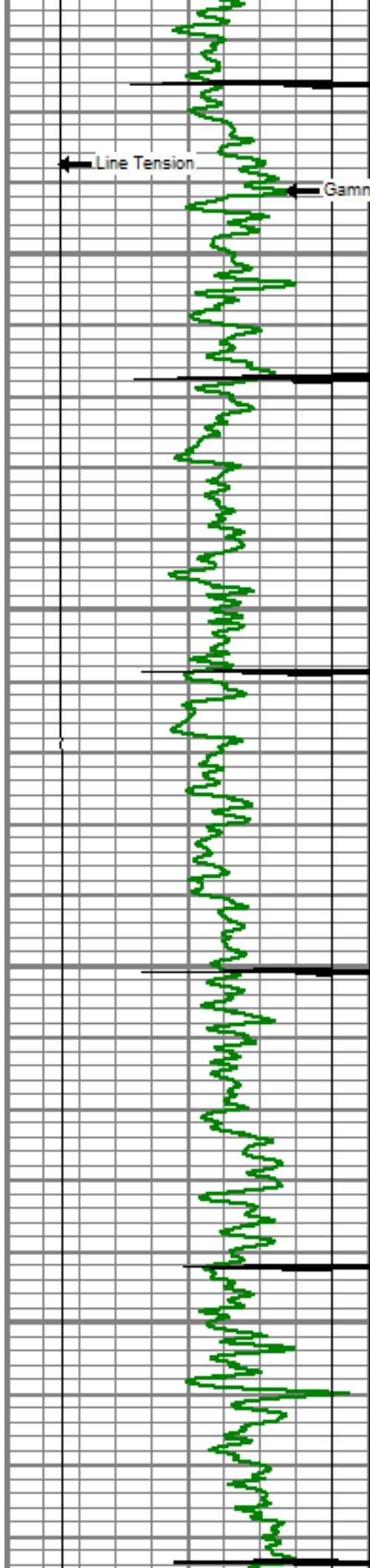
Database File: maier 4-2-28.db
 Dataset Pathname: pass5
 Presentation Format: dobl_prb
 Dataset Creation: Sat Jul 14 08:32:40 2012 by Log SCH 110930
 Charted by: Depth in Feet scaled 1:240

| | | |
|---|------------------|------|
| 0 | Gamma Ray (GAPI) | 200 |
| 0 | LTEN (lb) | 5000 |
| 9 | CCL | -1 |

| | | |
|---|--------------------------|-----|
| 0 | Amplified Amplitude (mV) | 20 |
| 0 | Amplitude (mV) | 100 |
| 0 | TT3 (usec) | 280 |

| | | |
|-----|------------------|------|
| 200 | Variable Density | 1200 |
|-----|------------------|------|



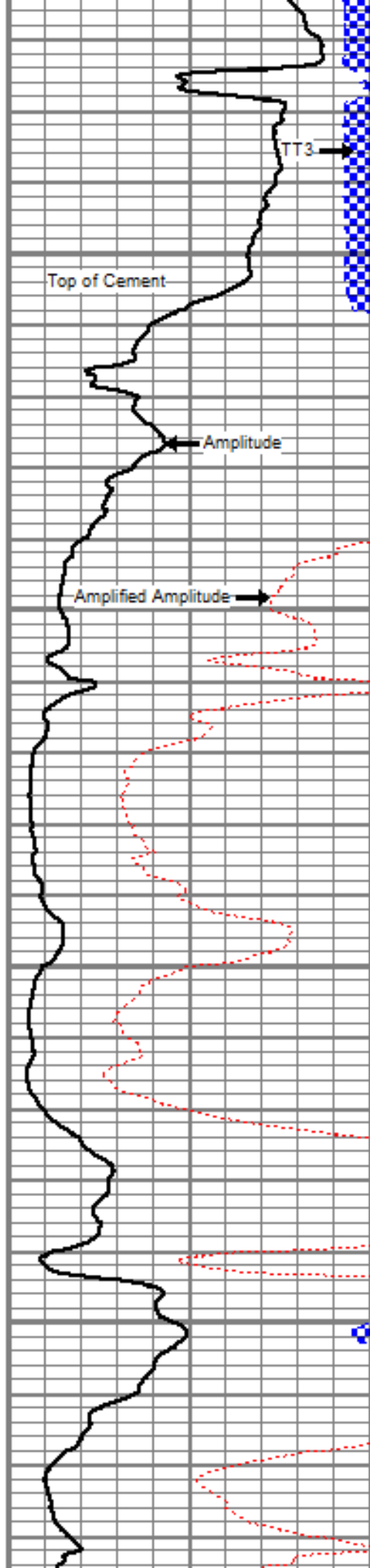


4200

4250

4300

4350

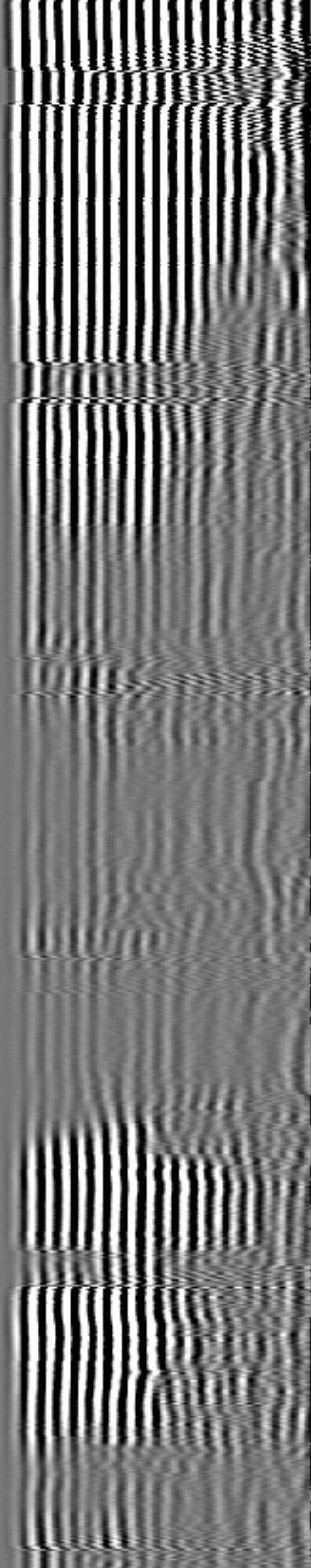


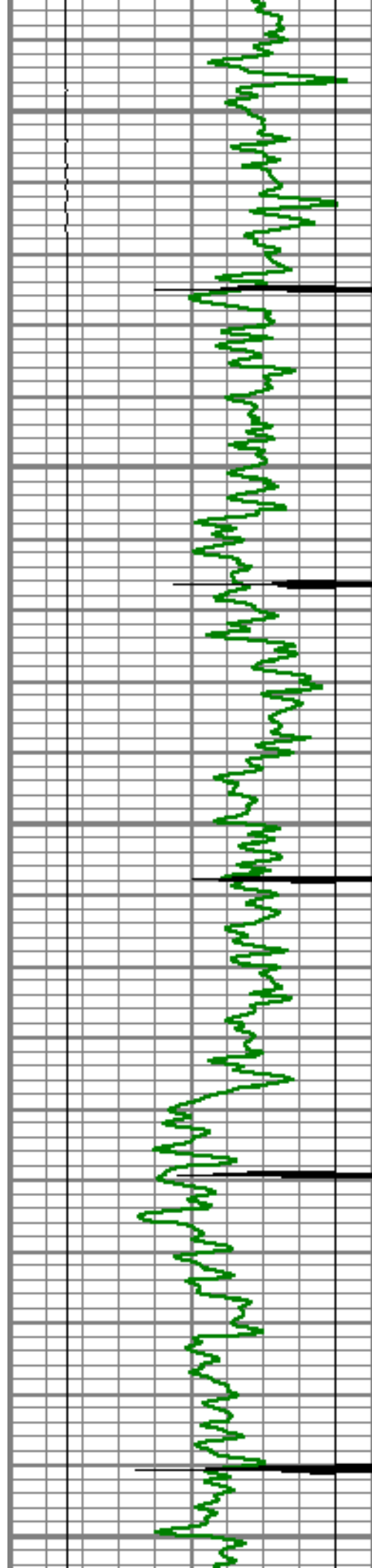
Top of Cement

TT3

Amplitude

Amplified Amplitude





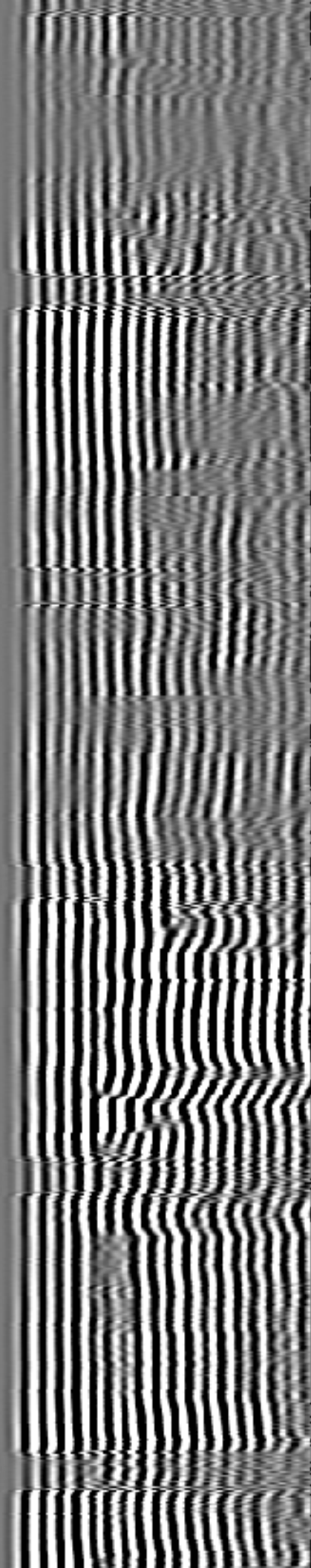
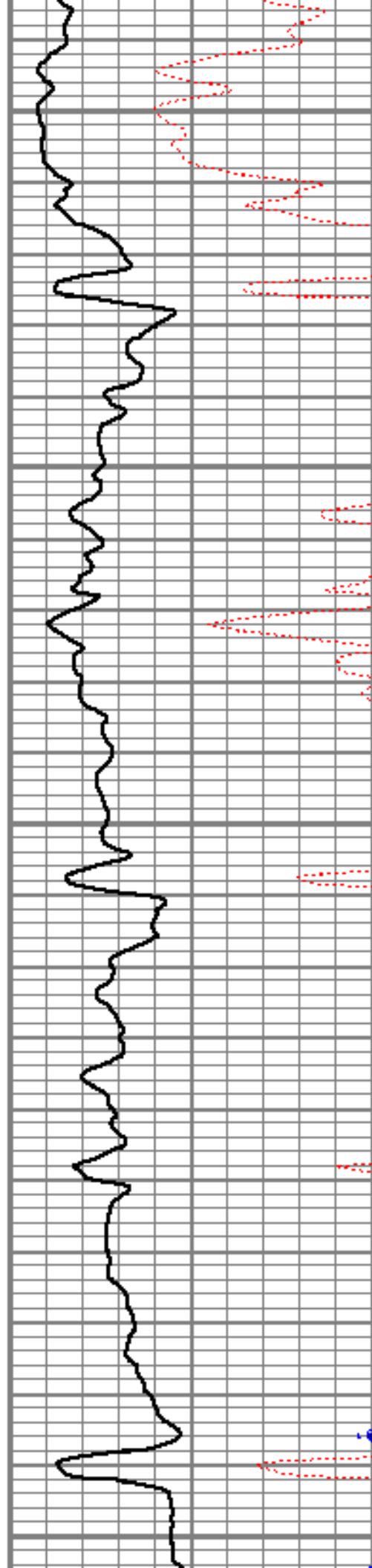
4400

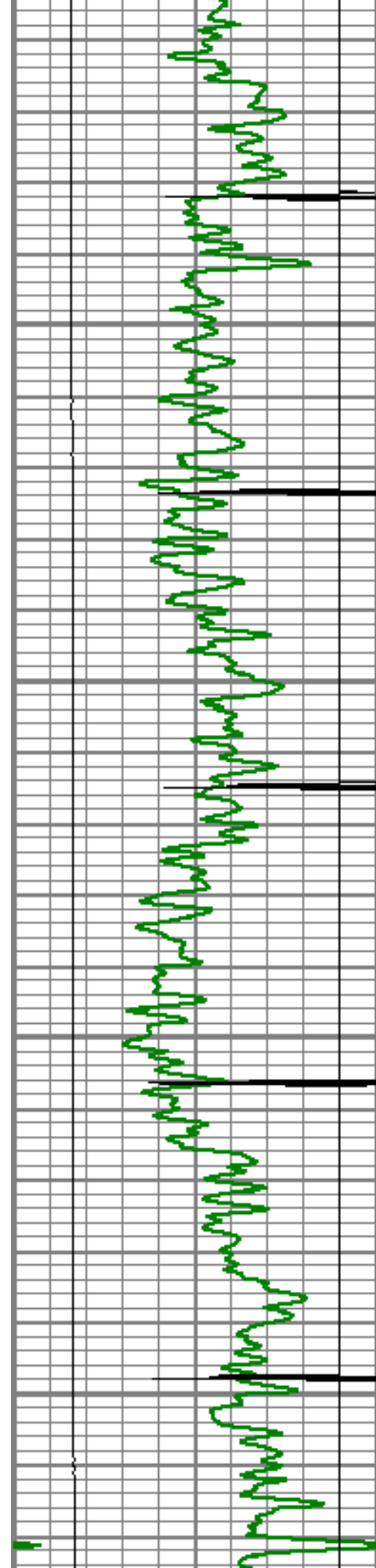
4450

4500

4550

4600



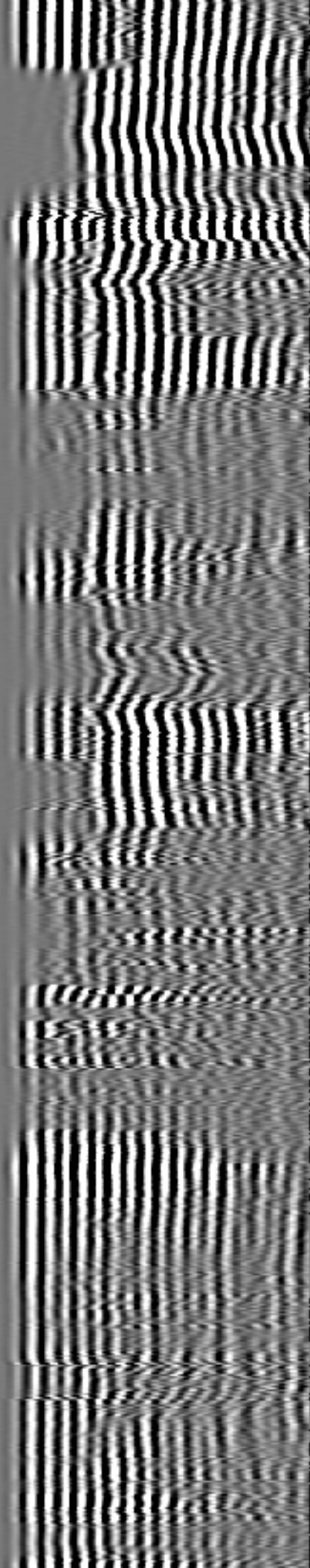
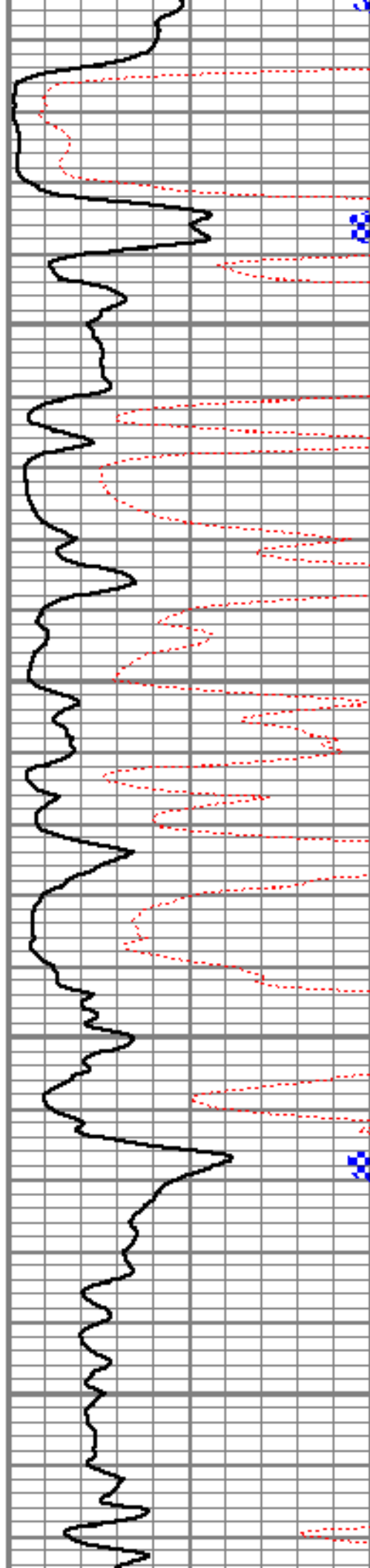


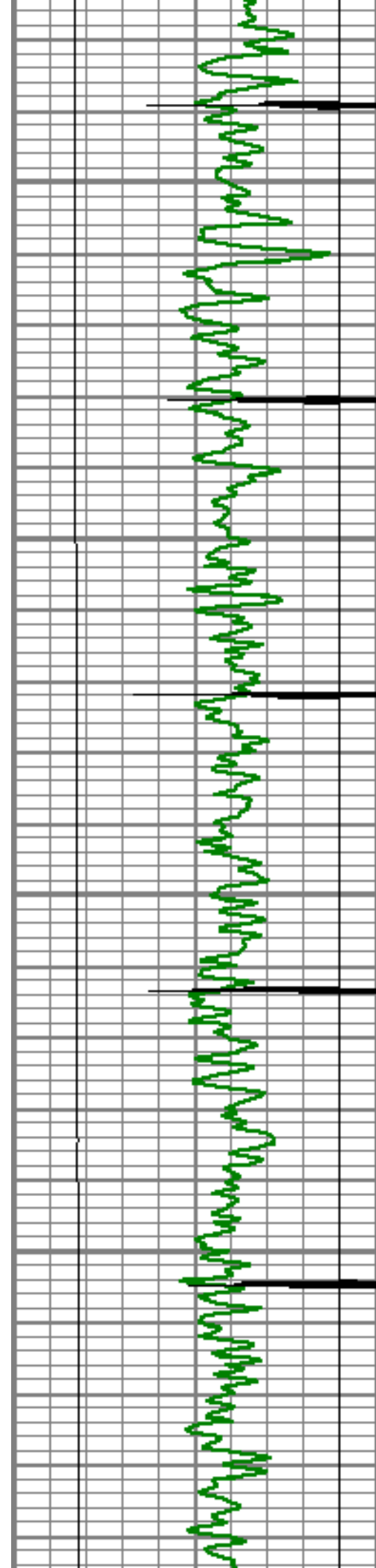
4650

4700

4750

4800



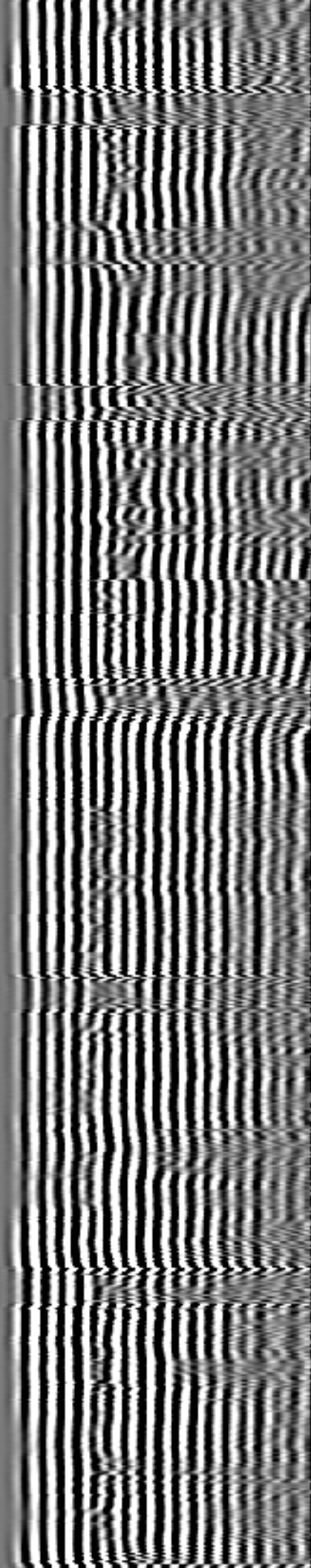
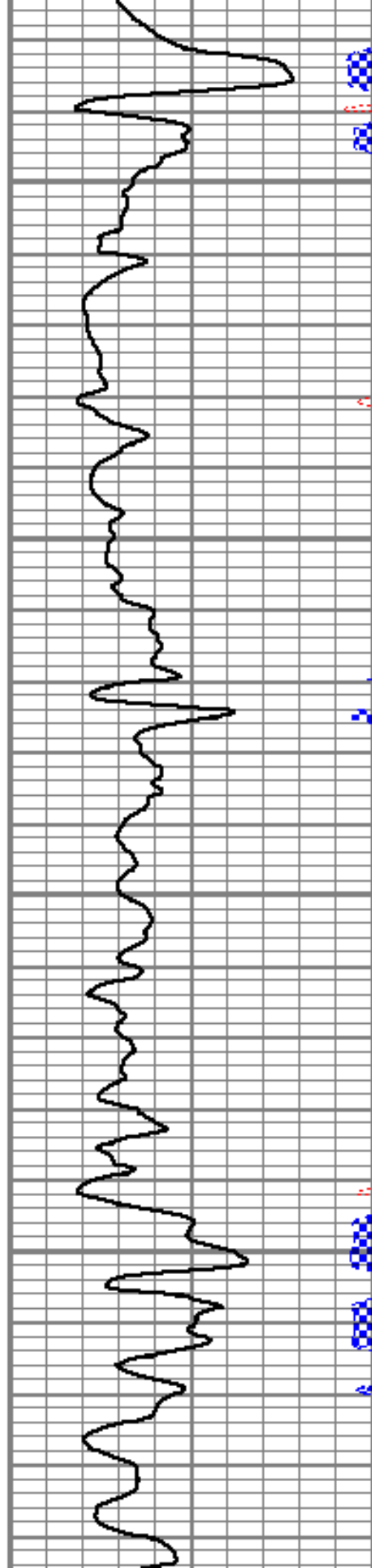


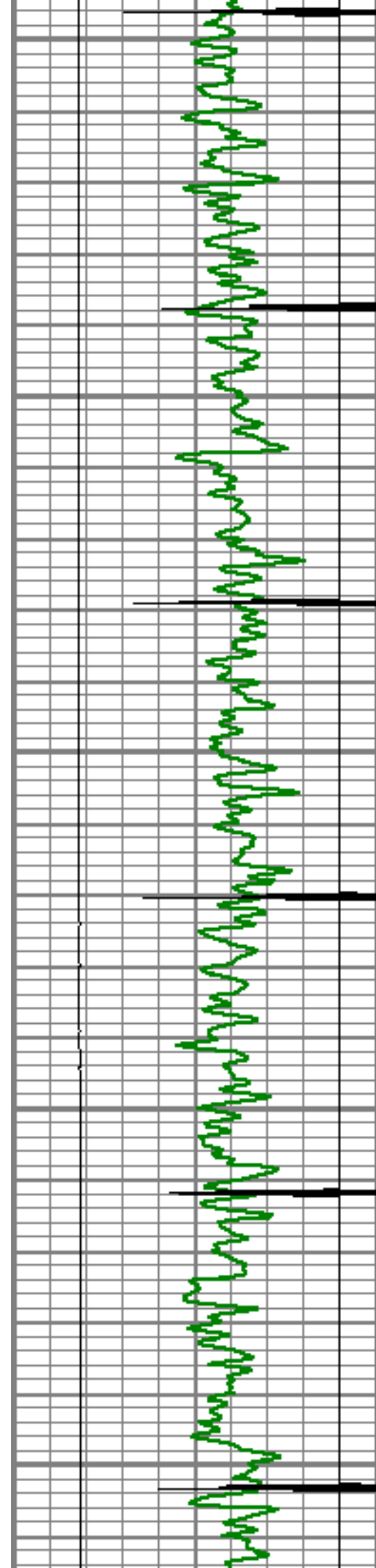
4850

4900

4950

5000





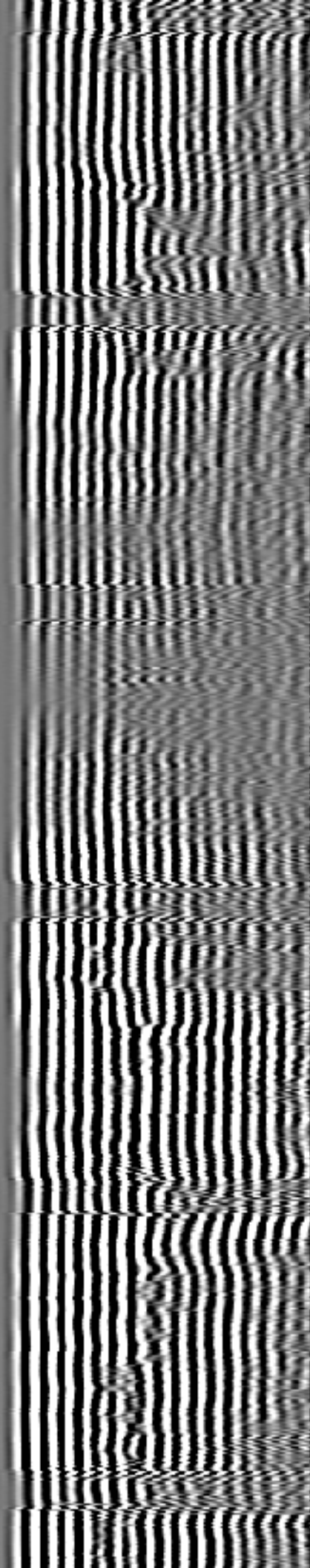
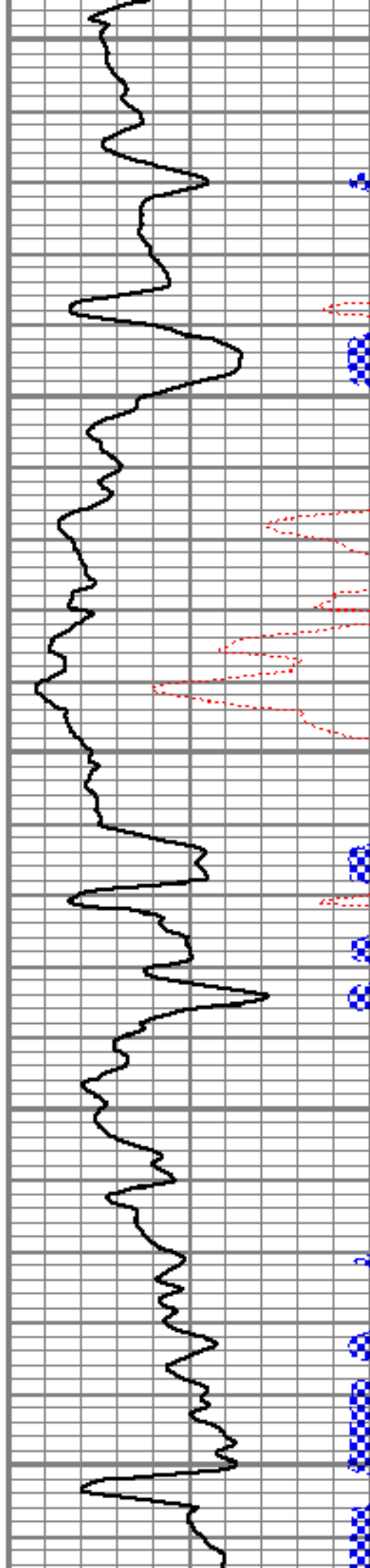
5050

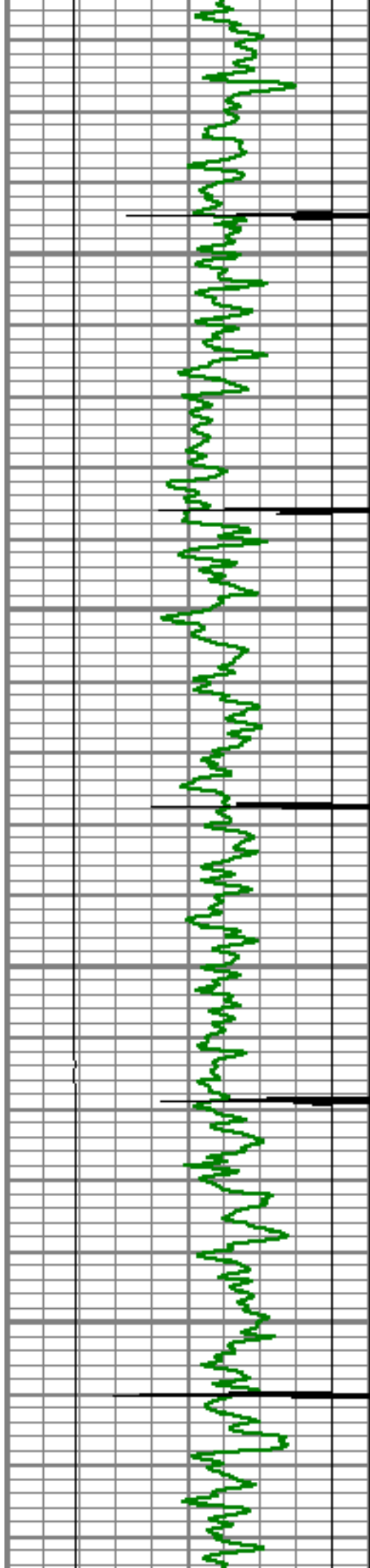
5100

5150

5200

5250



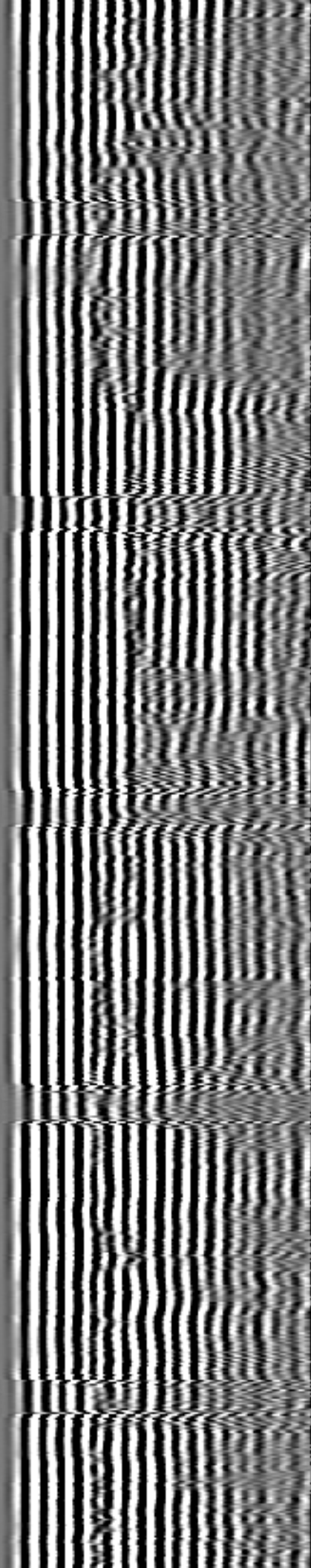
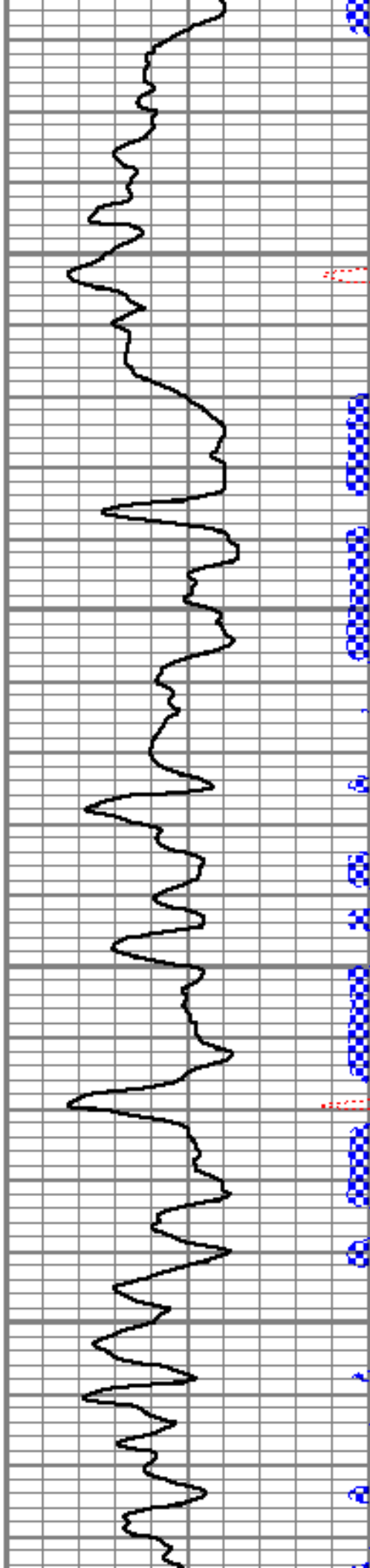


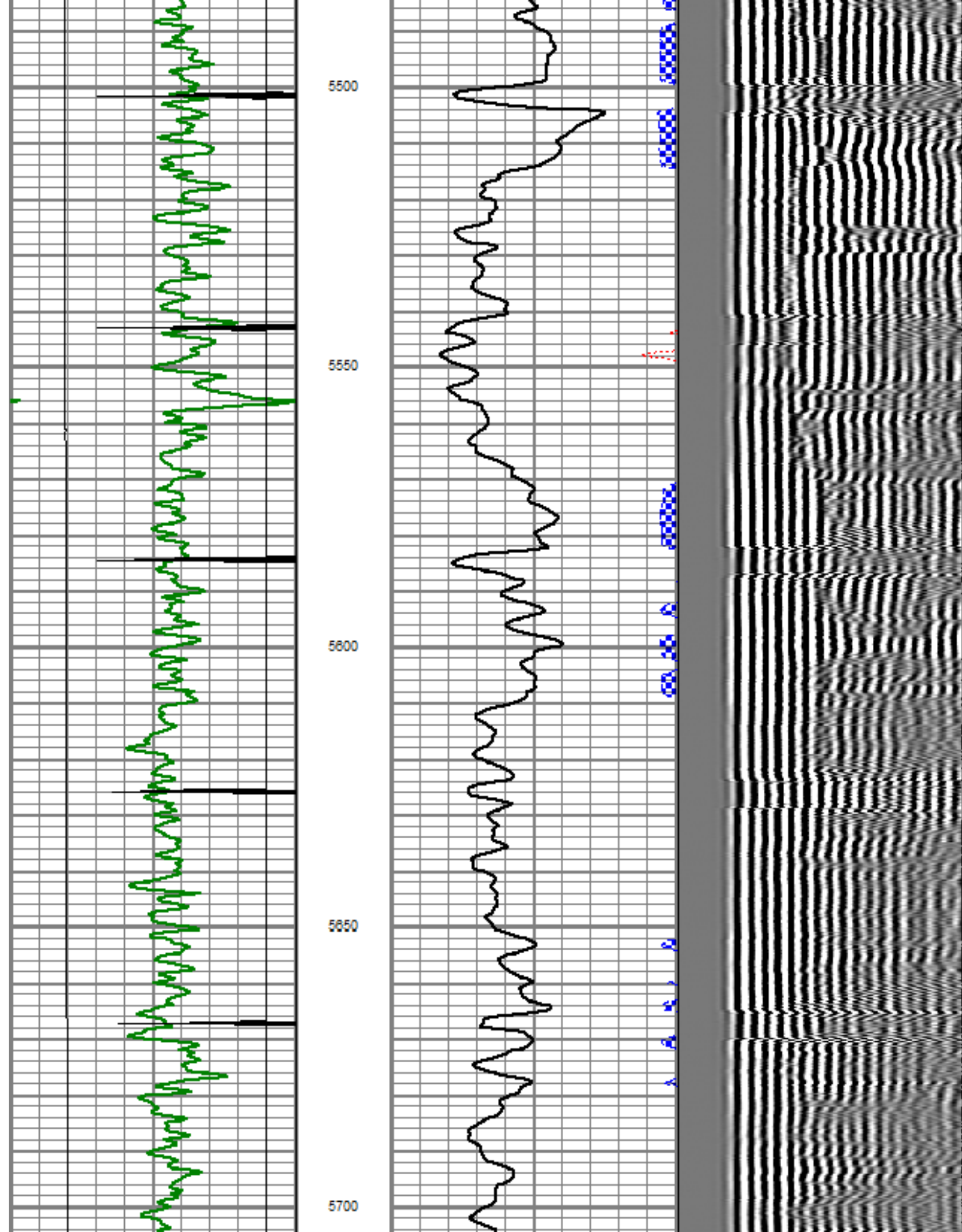
5300

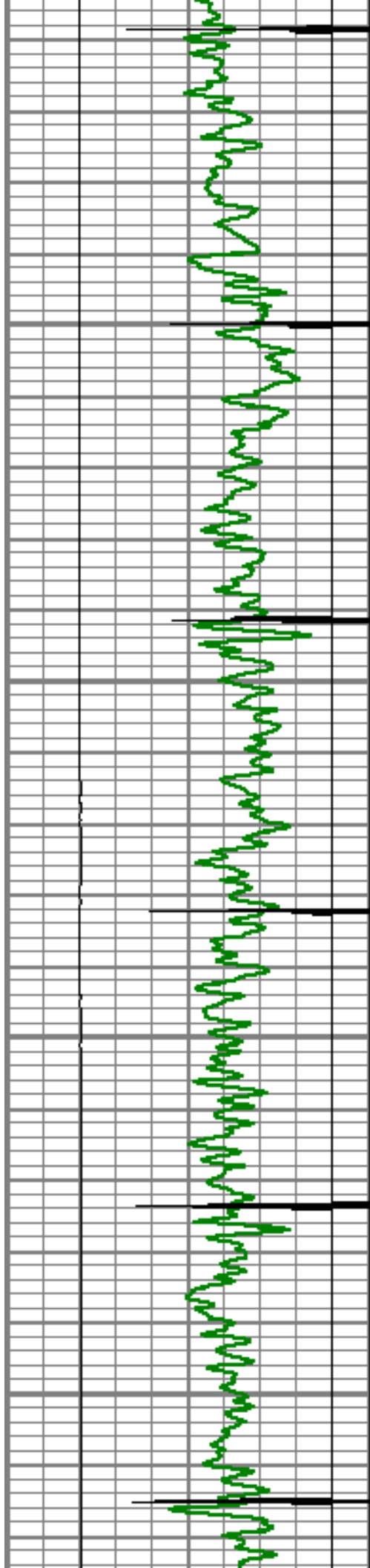
5350

5400

5450





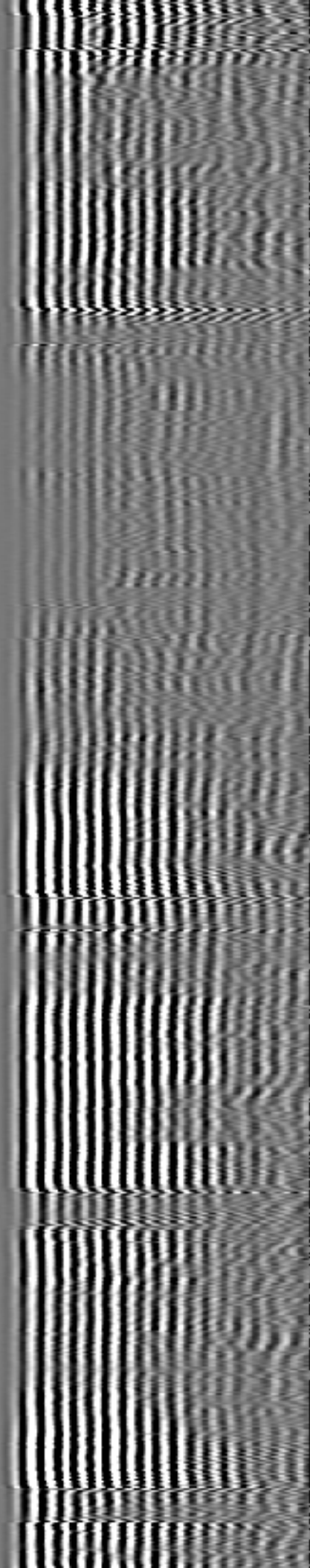
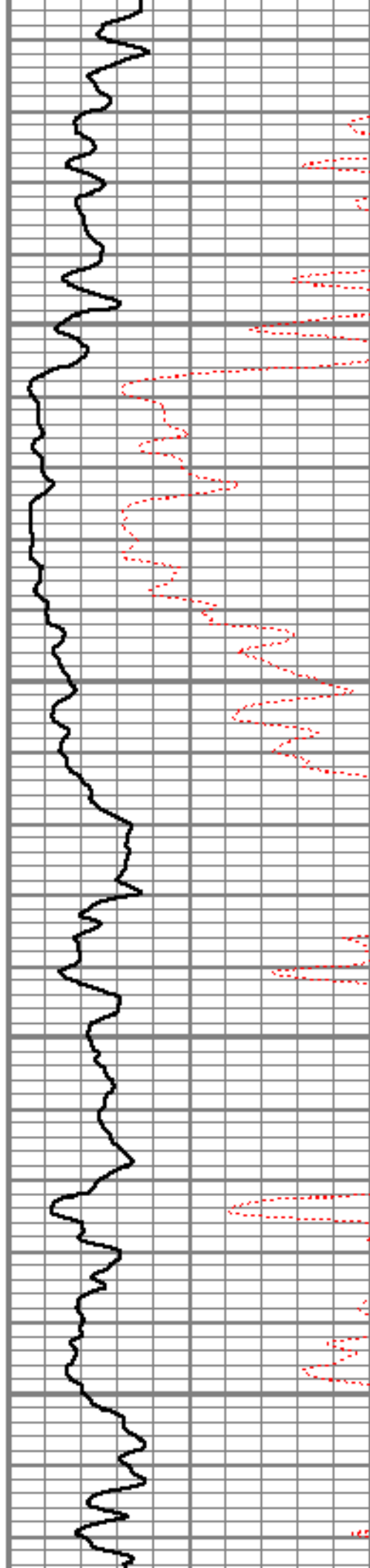


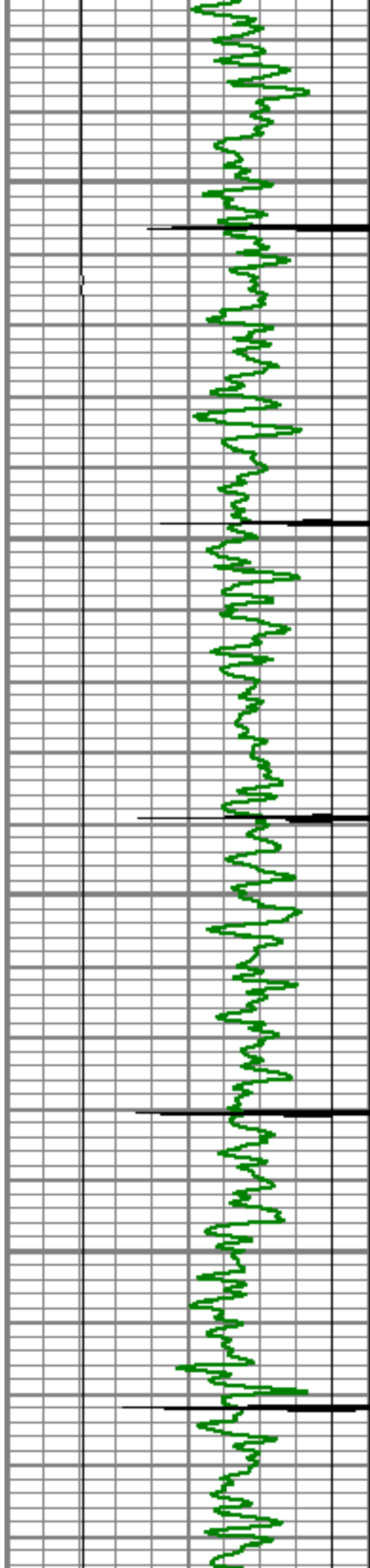
5750

5800

5850

5900



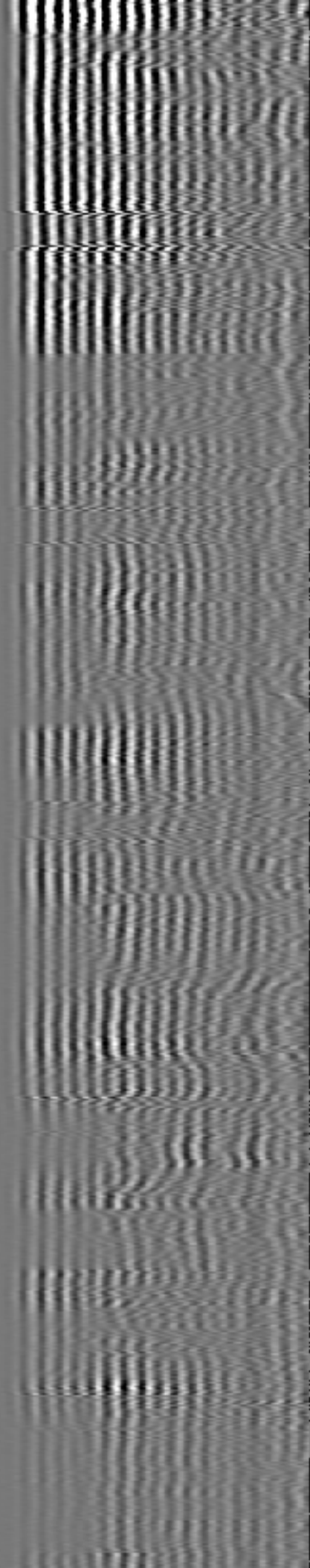
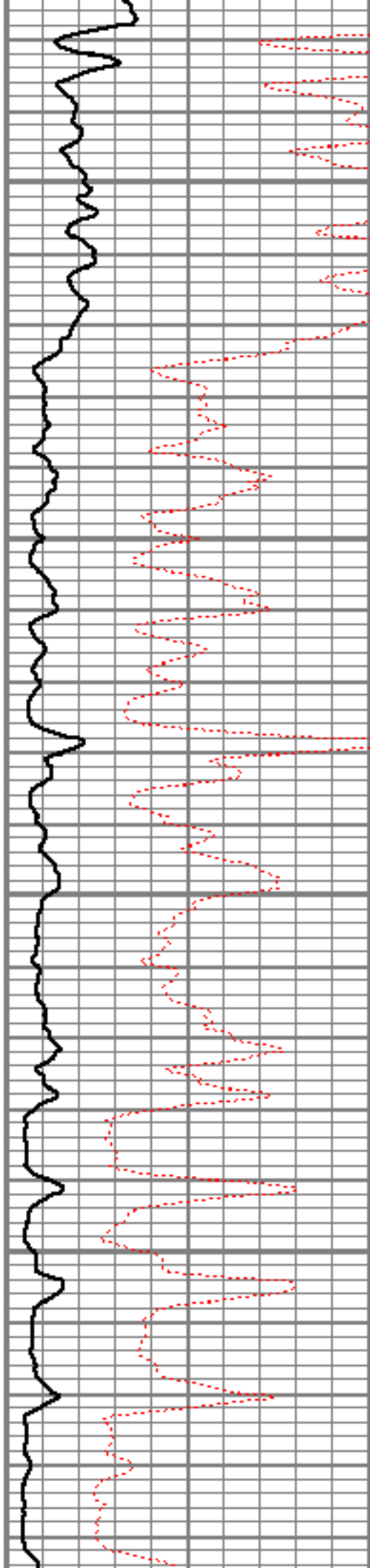


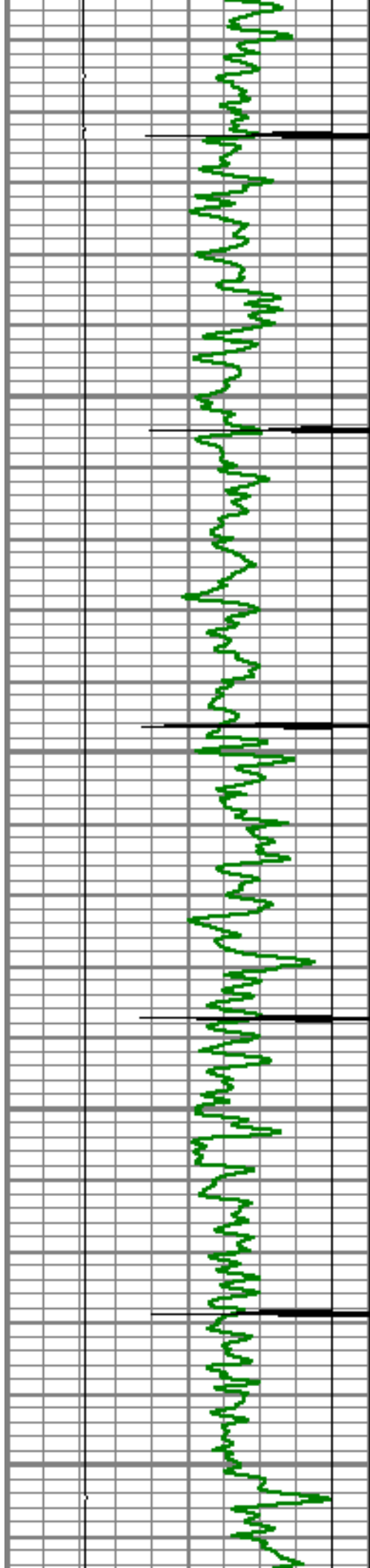
5950

6000

6050

6100





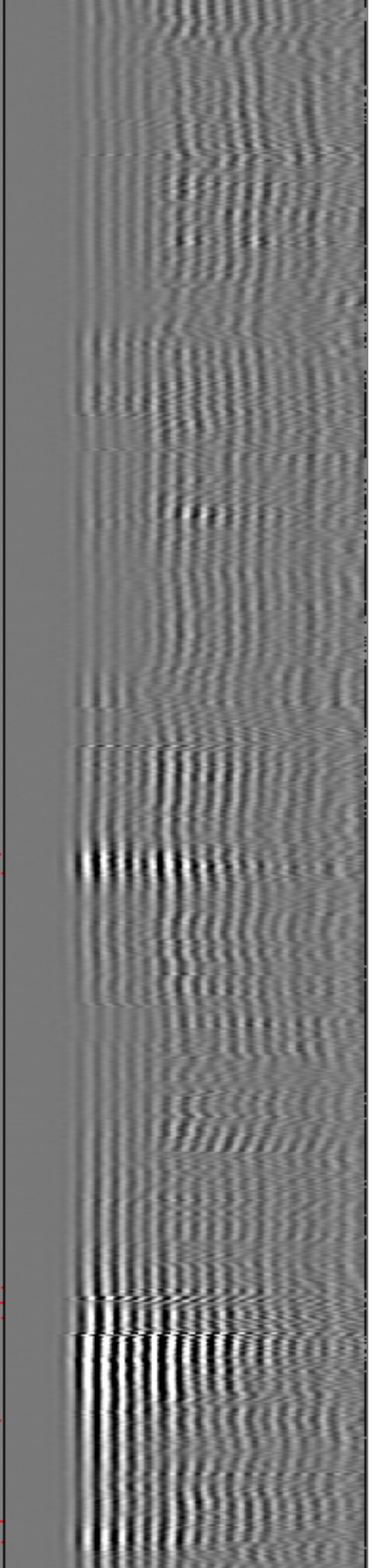
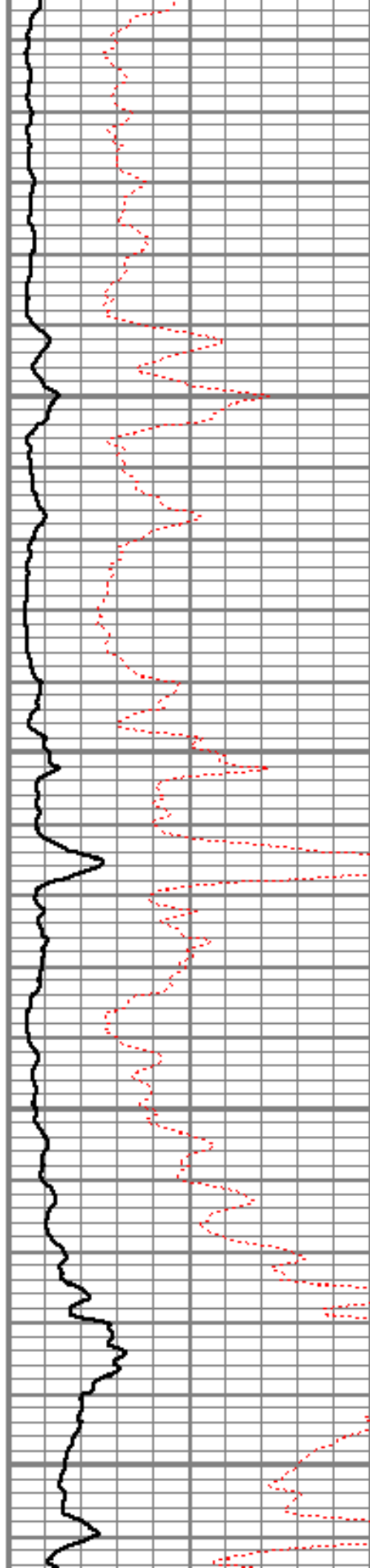
6150

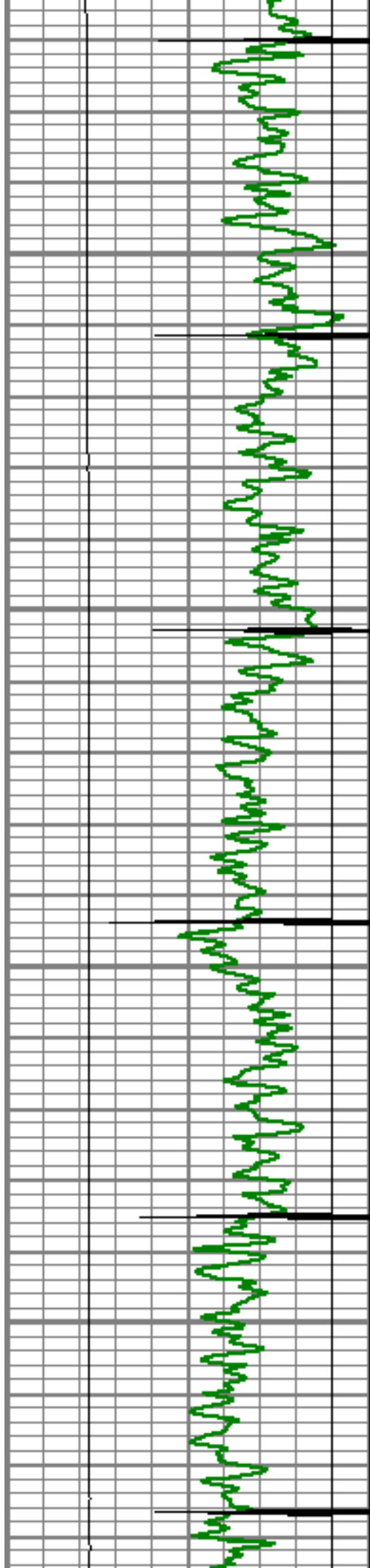
6200

6250

6300

6350



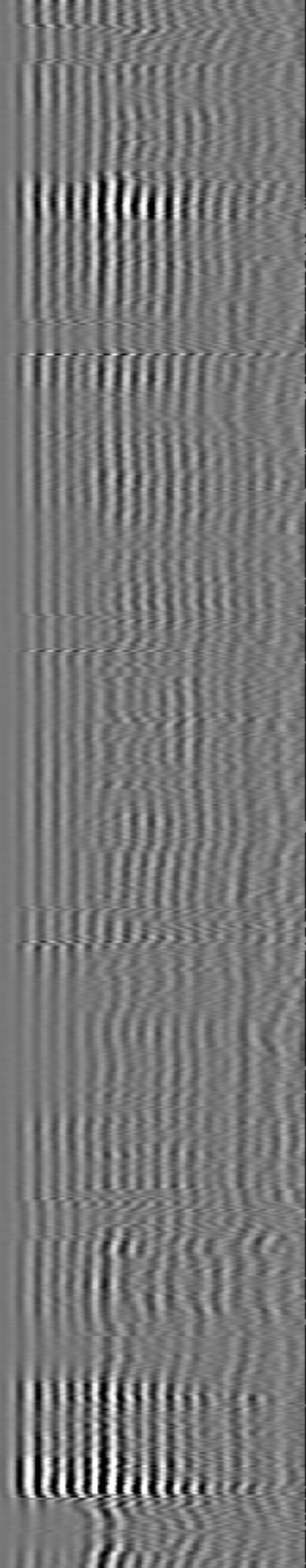
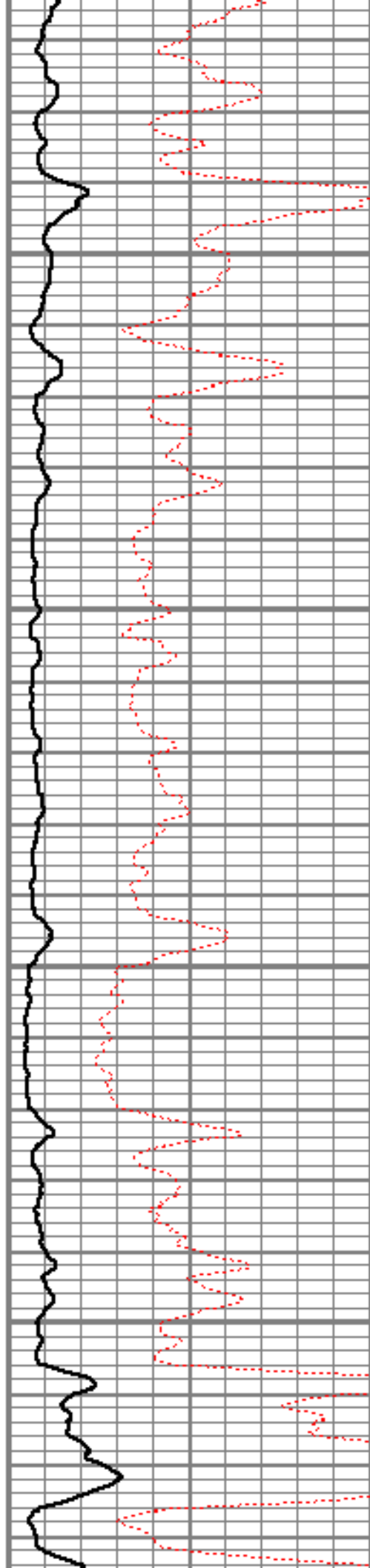


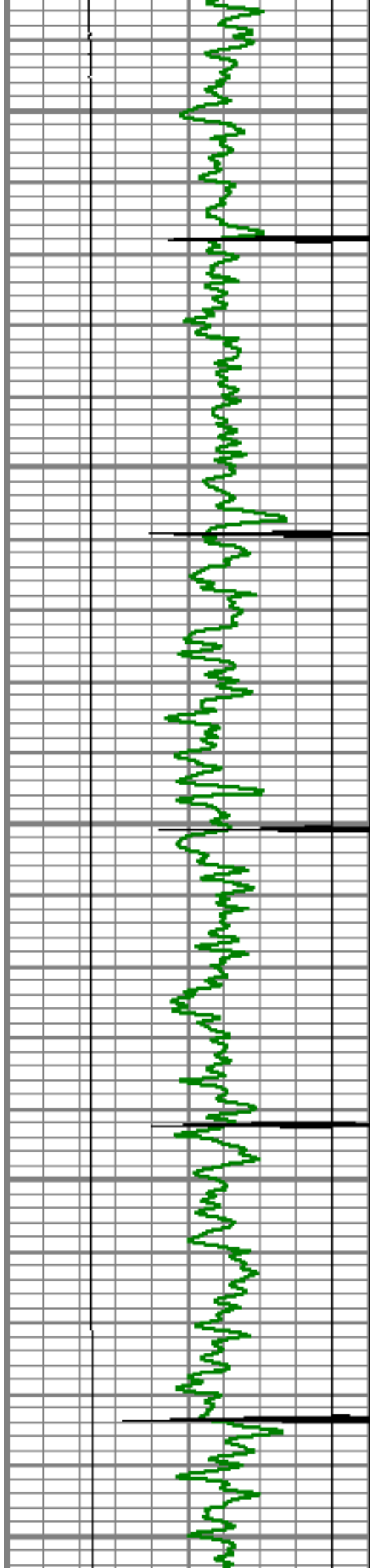
6400

6450

6500

6550





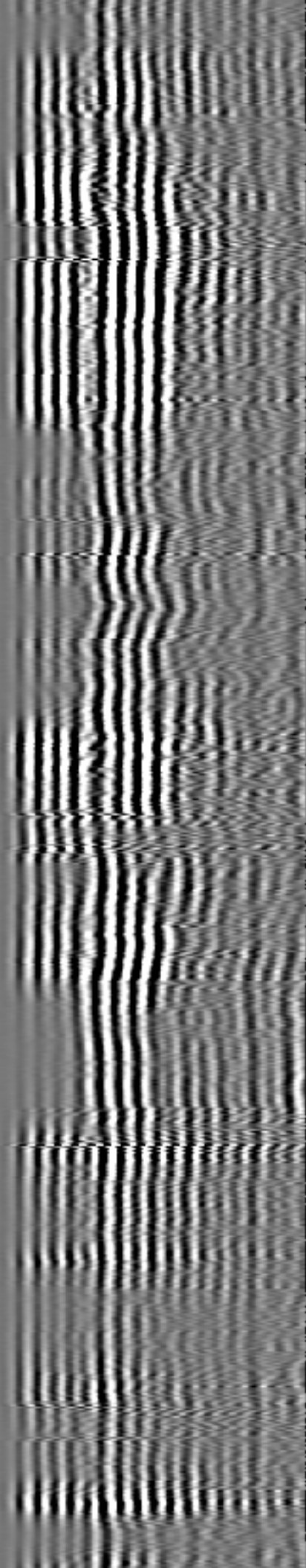
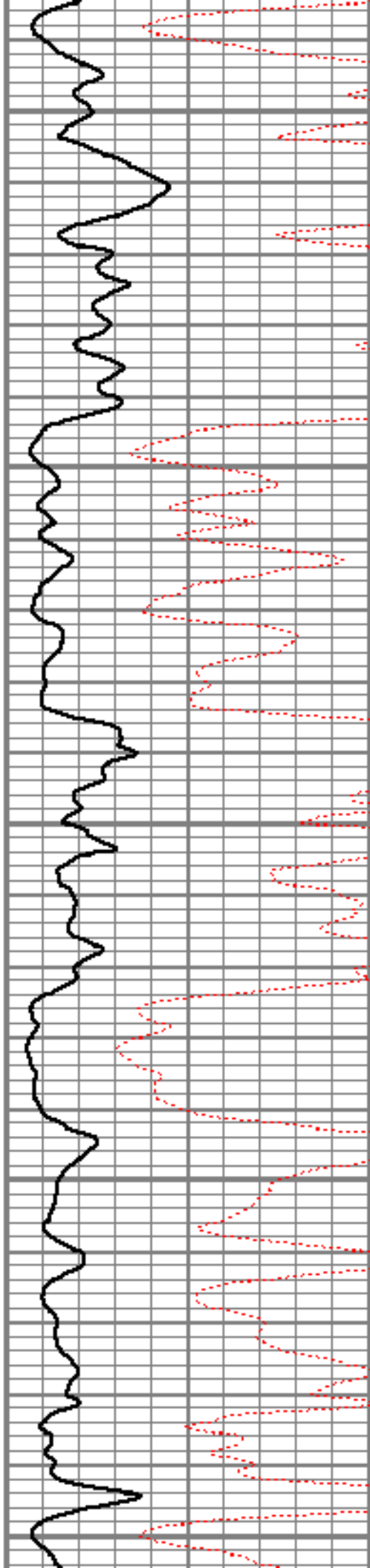
6600

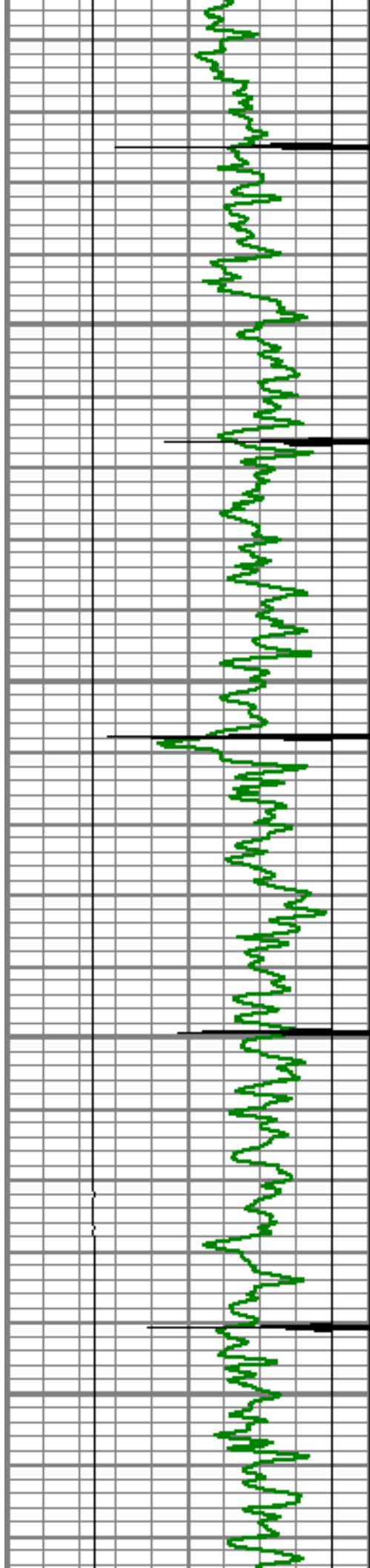
6650

6700

6750

6800



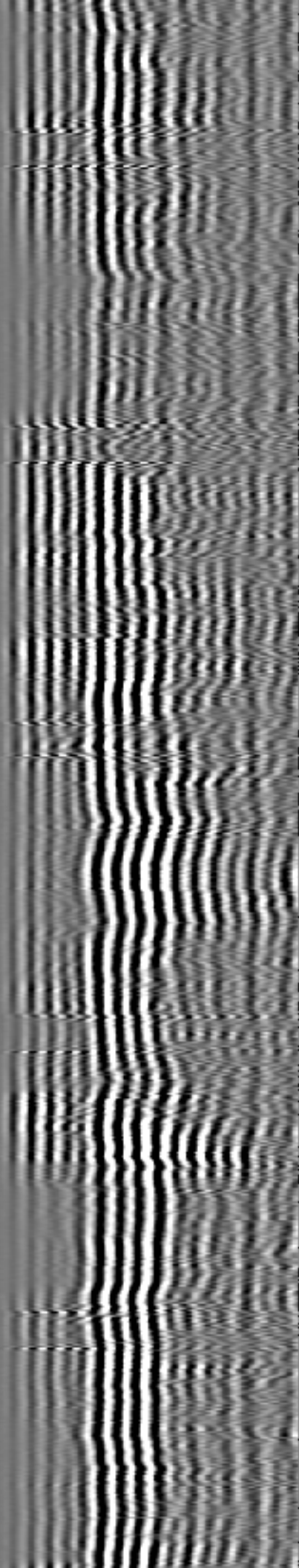
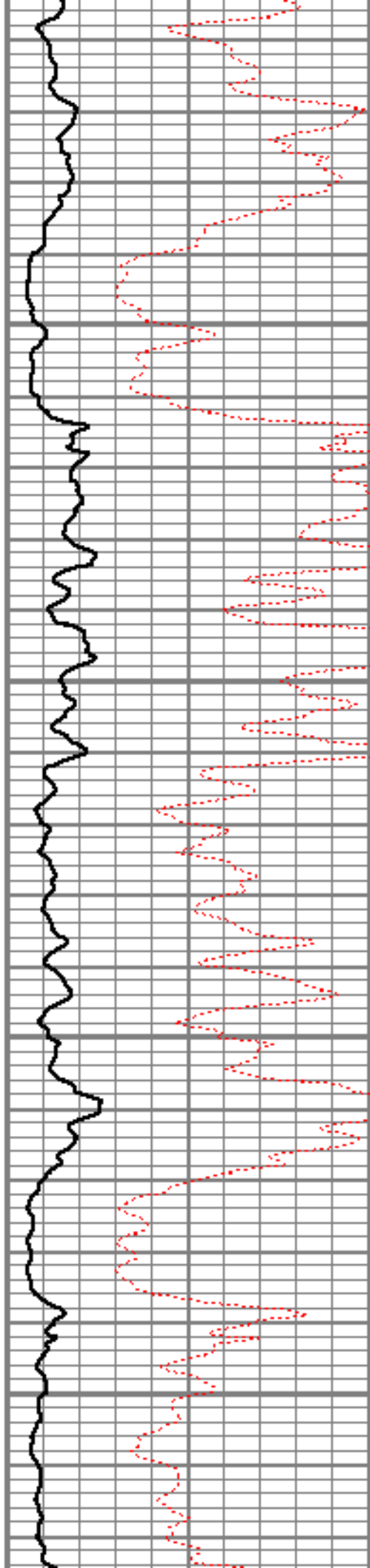


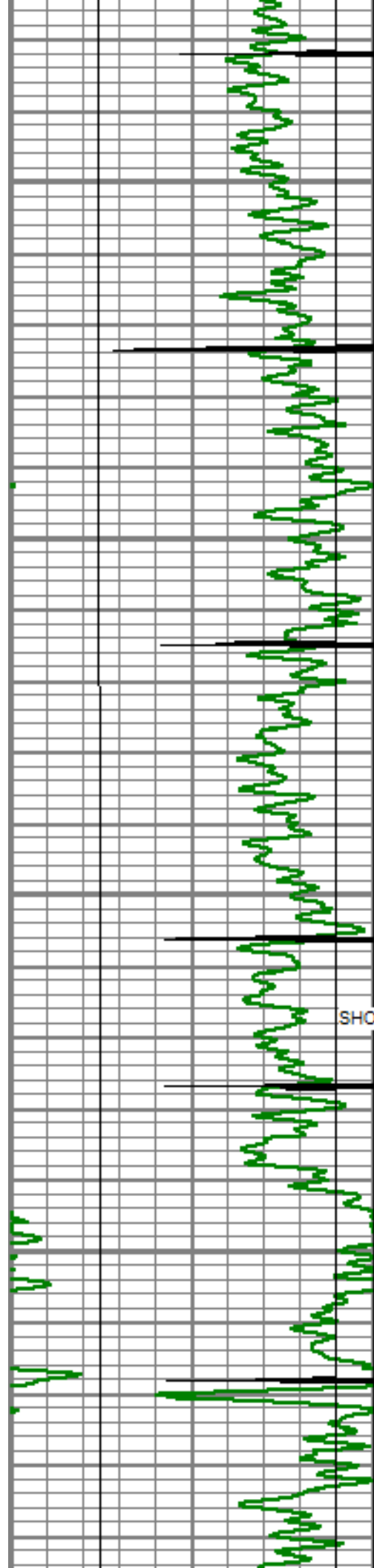
6850

6900

6950

7000





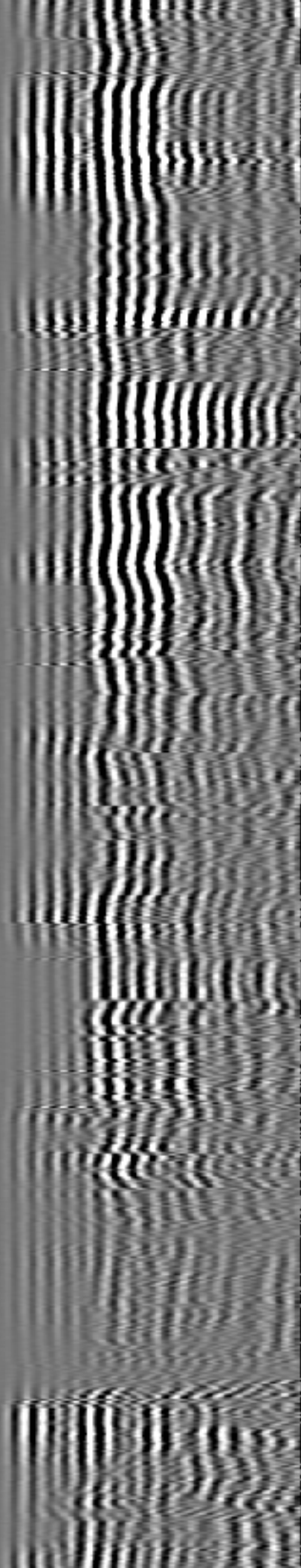
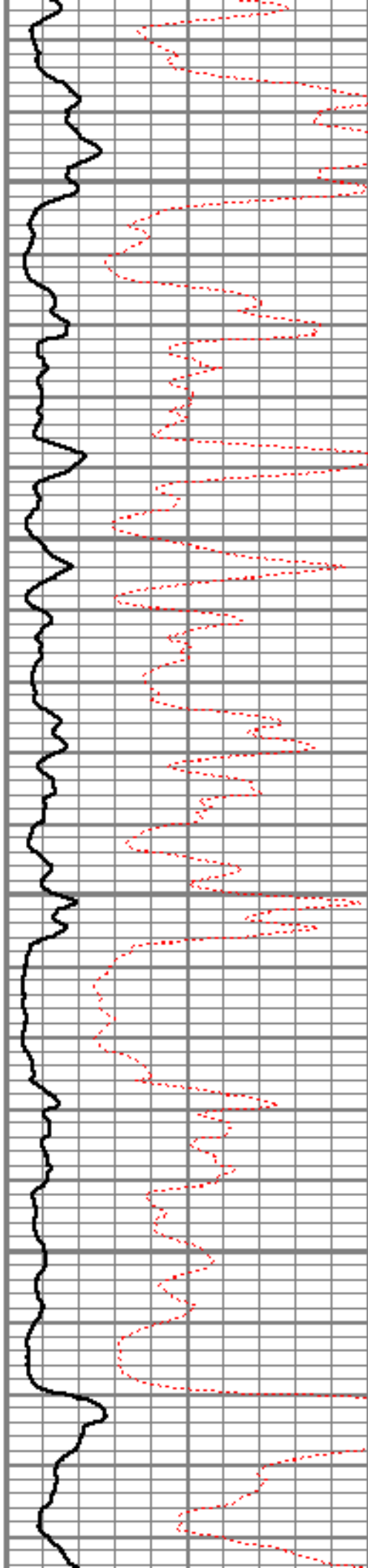
7050

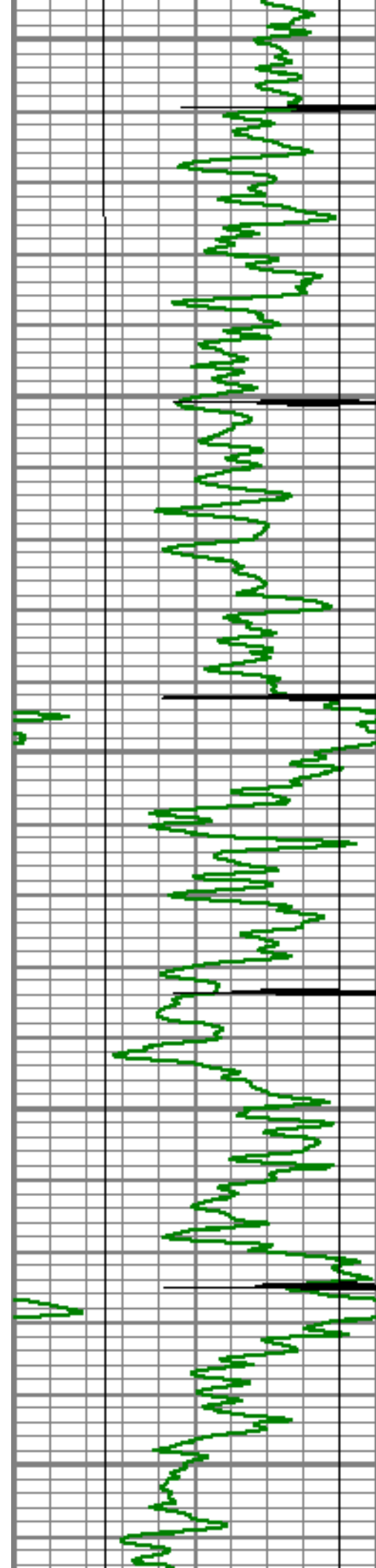
7100

7150

SHORT JOINT

7200





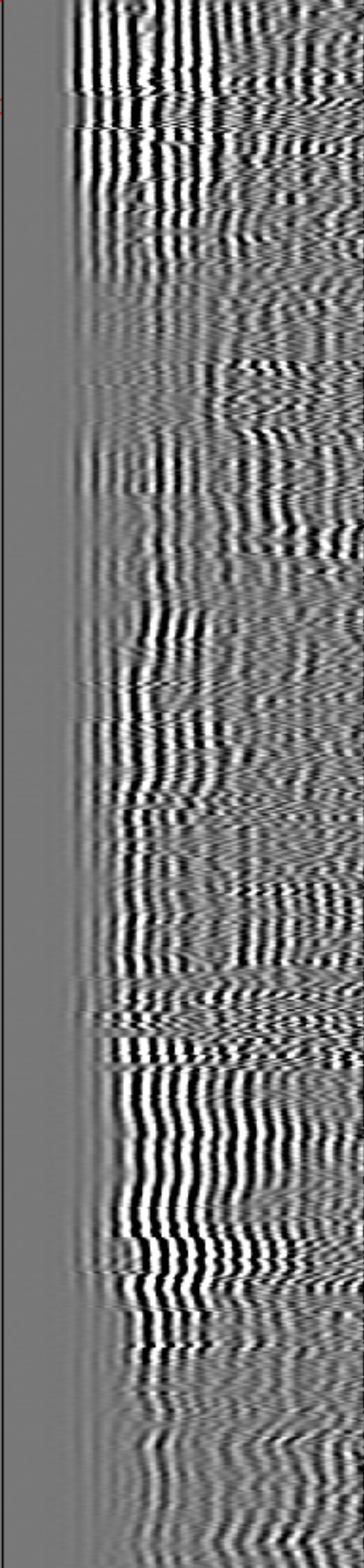
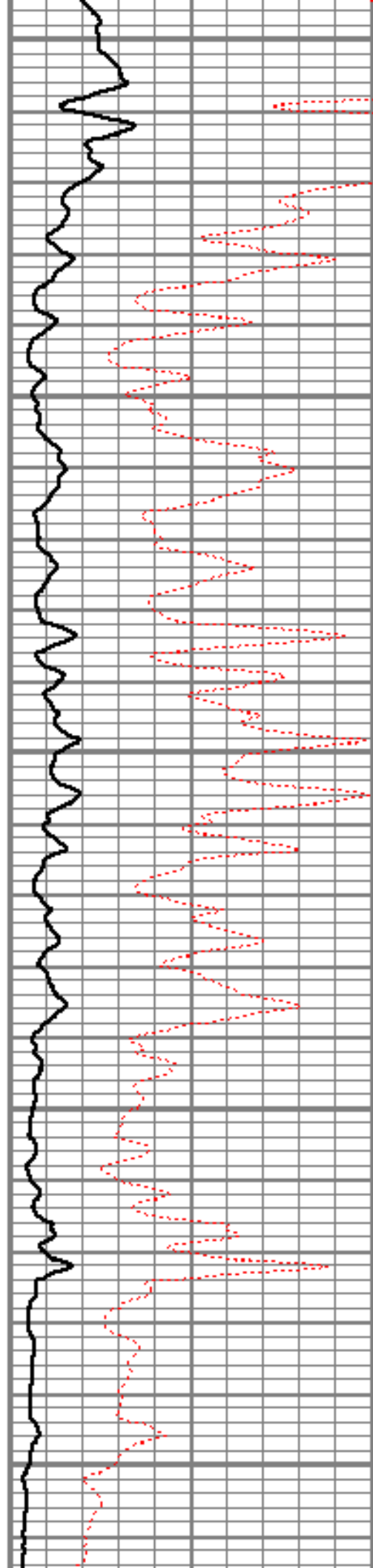
7250

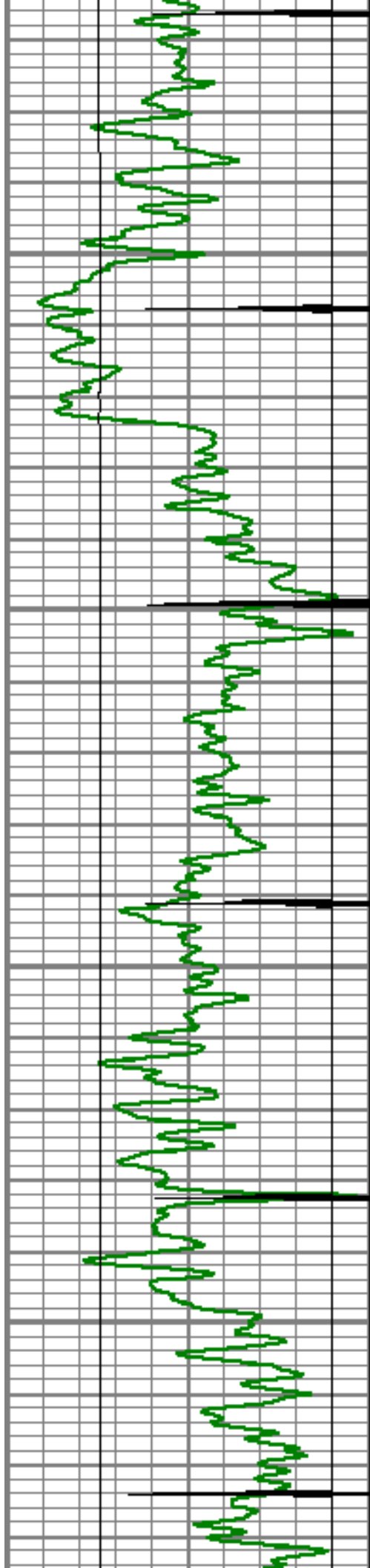
7300

7350

7400

7450



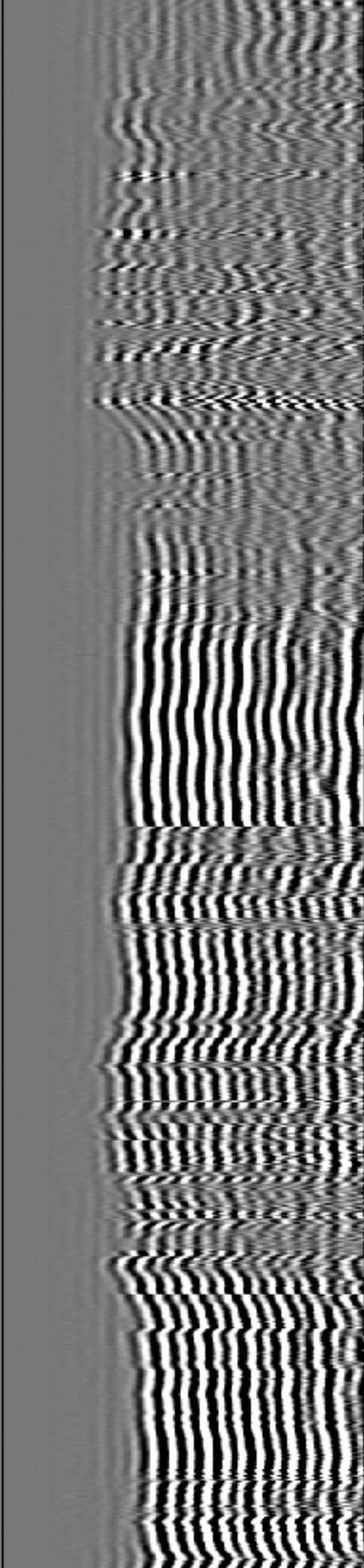
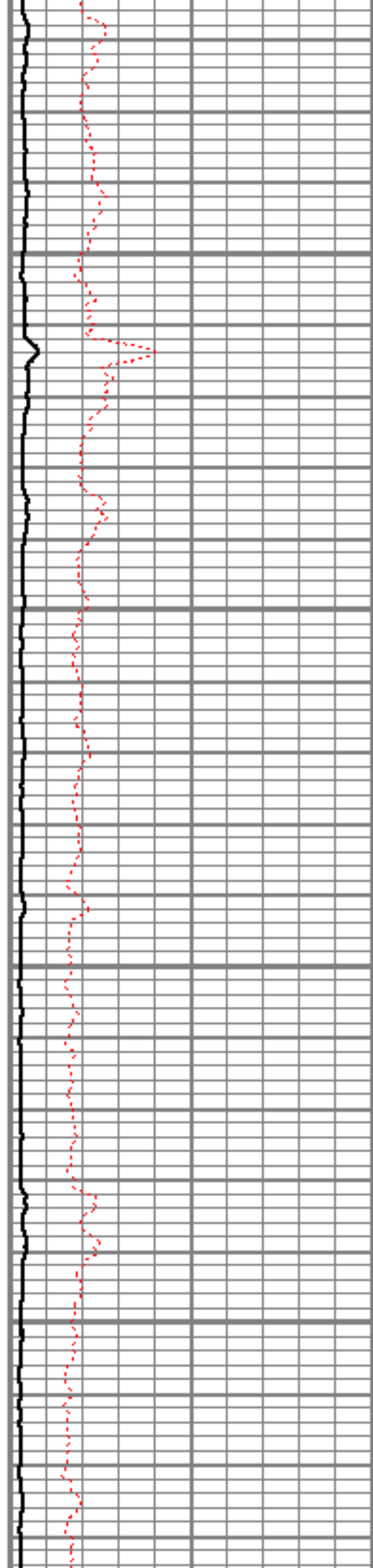


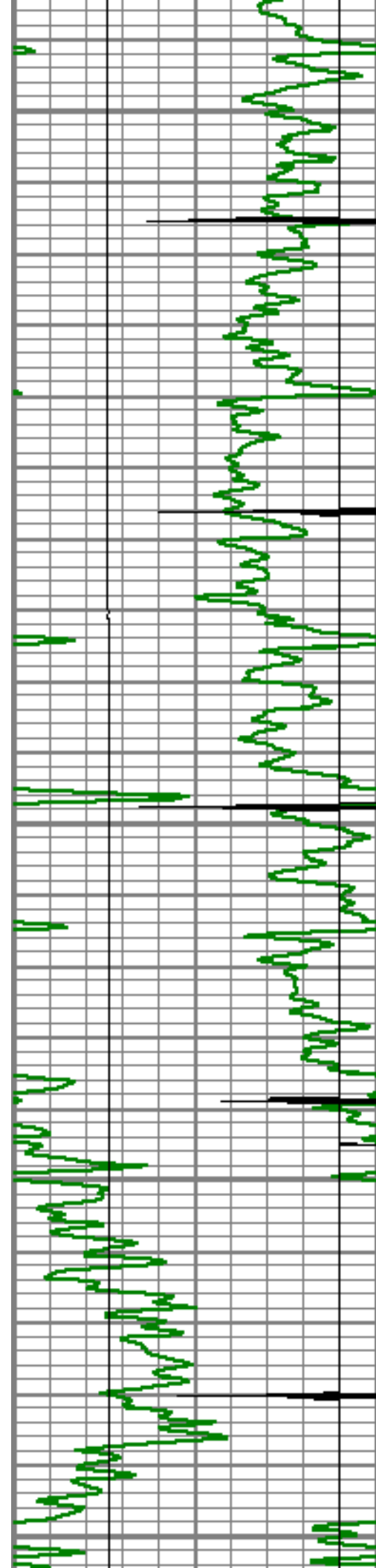
7500

7550

7600

7650





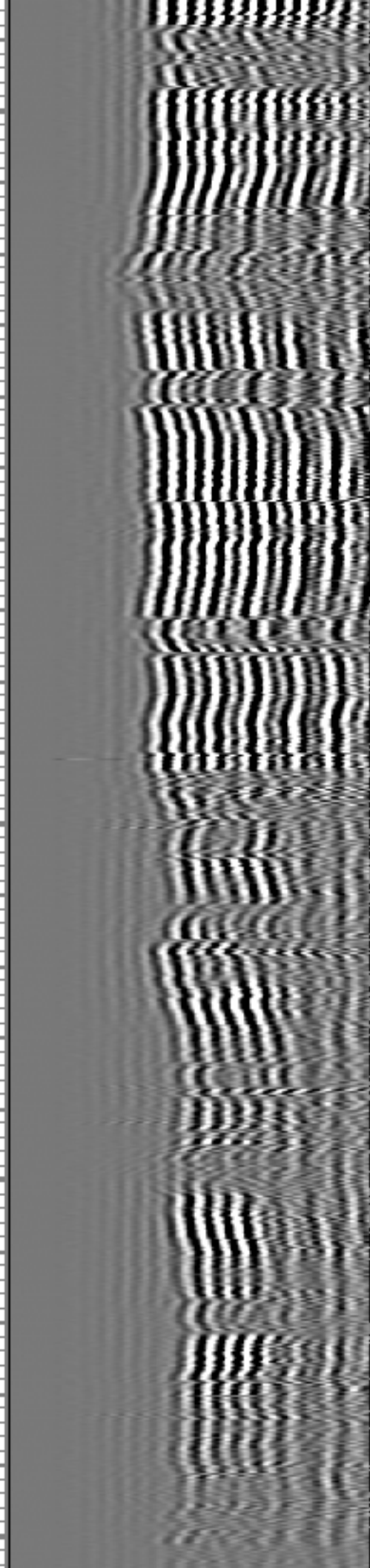
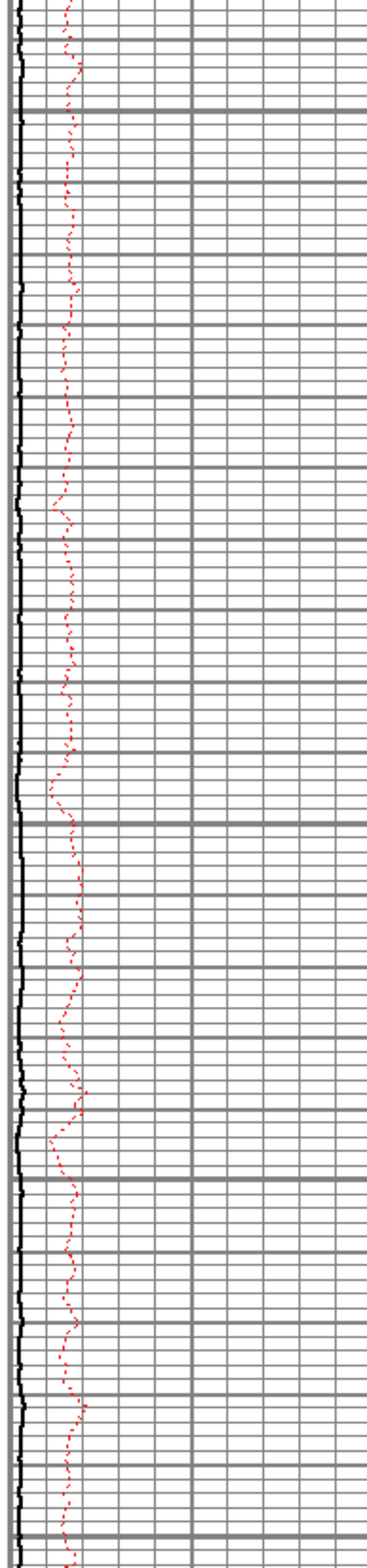
7700

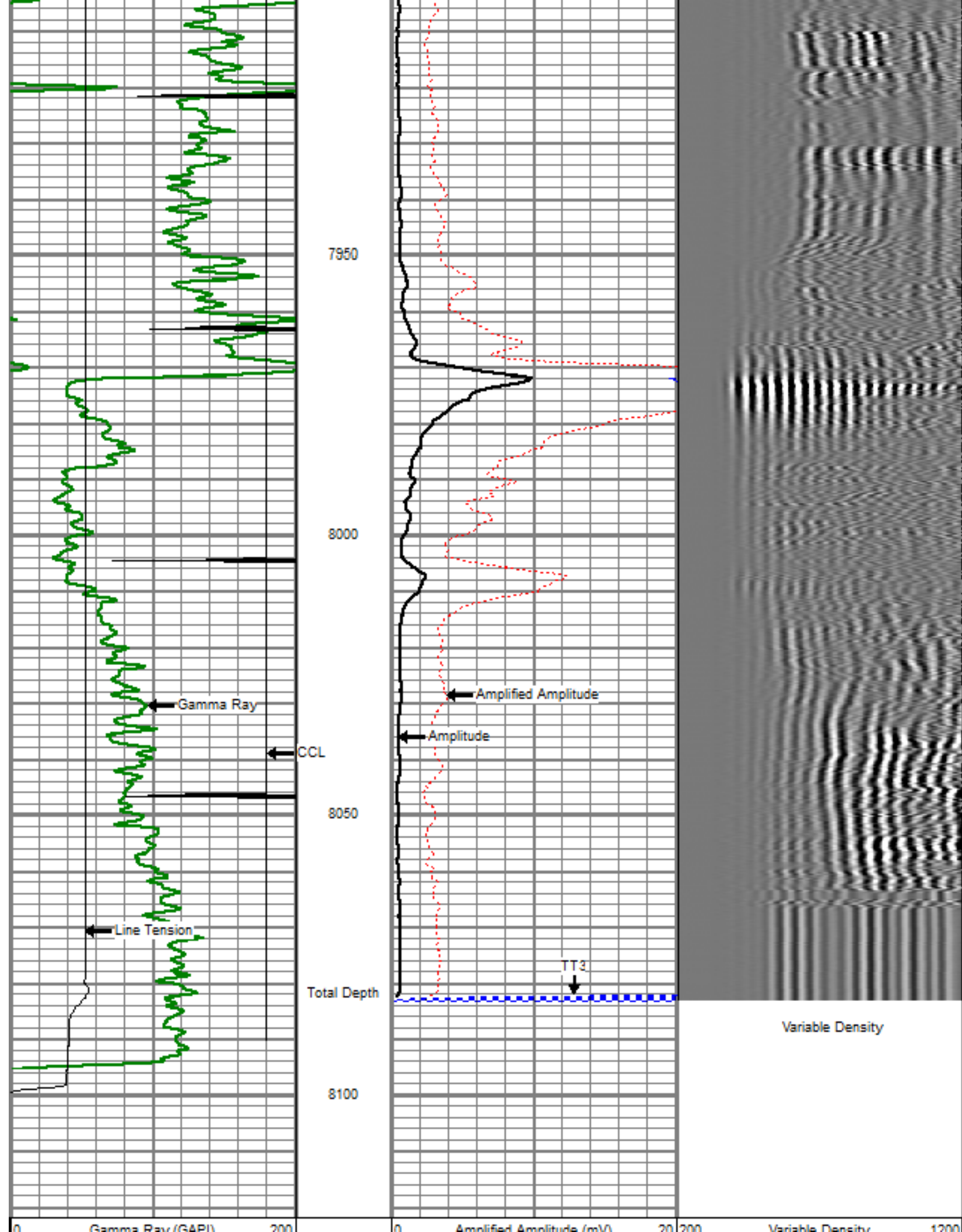
7750

7800

7850

7900

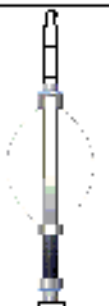






| | | |
|----------------|-----------|------|
| Gamma Ray (GR) | | |
| 0 | LTEN (lb) | 5000 |
| 9 | CCL | -1 |

| | | |
|----------------|----------------|-----|
| Amplitude (mV) | | |
| 0 | Amplitude (mV) | 100 |
| 0 | TT3 (usec) | 280 |

| | | |
|------------------|------------------|------|
| Variable Density | | |
| 0 | Variable Density | 1200 |

| Sensor | Offset (ft) | Schematic | Description | Len (ft) | OD (in) | Wt (lb) |
|--------|-------------|---|---|----------|---------|---------|
| WVF3 | 16.56 |  | titan Titan Cable Head Go Pin. | 1.02 | 1.44 | 1.50 |
| | | | Centralizer-Probe (CENT-PROBE-1) Probe Bowspring Centralizer | 2.88 | 2.75 | 10.00 |
| | | | CBL-PRB_CBL_DIGITAL (PRB_CBL_DIG_28.77.1) Probe 2.75" Dual Receiver Bond | 28.77 | 2.75 | 60.00 |
| WVF5 | 15.56 |  | Centralizer-Probe (CENT-PROBE-2) Probe Bowspring Centralizer | 2.88 | 2.75 | 10.00 |
| CCL | 8.21 | | CCL-PRB_CCL_2MAG (PRB_CCL_2MAG_02.02) Probe 2 Magnet CCL | 02.02 | 2.75 | |
| GR | 3.63 | | GR-PROBE_GR (PRB_GR_275_01) Probe stand alone Gamma Ray Tool | 4.54 | 2.75 | 30.00 |
| | | TEMP-Comprobe (TEMP_CMPRB_1375_0) Positive pulse Temp tool | 2.88 | 1.38 | 15.00 | |

| | | | | | |
|--|------|--|--|--|--|
| TEMP | 0.17 | | | | |
| Dataset: maier 4-2-28.db: field/well/run1/pass6 Total Length: 24.98 ft Total Weight: 126.50 lb O.D. 2.75 in | | | | | |

| | | |
|--|---------|-----------------------------|
|  | Company | ENCANA OIL & GAS (USA) INC. |
| | Well | MAIER 4-2-28 |
| | Field | WATTENBERG |
| | County | WELD |
| | State | COLORADO |