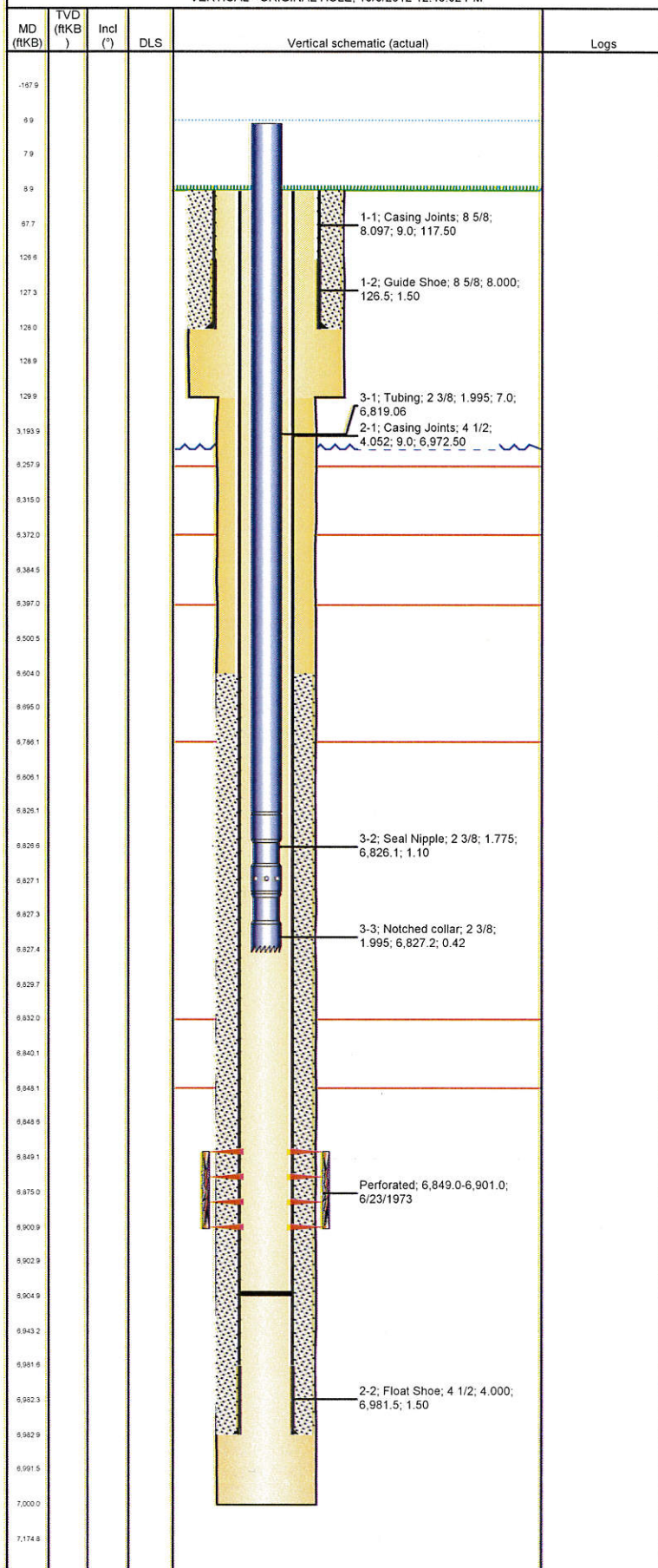


Well Name: PREMIER 12-03

VERTICAL - ORIGINAL HOLE, 10/5/2012 12:43:02 PM



Well Header			
API	Business Unit	District	Well Config
05-123-07049	WATTENBERG	15	VERTICAL
Original KB Elevation (ft)	KB - GL / MSL (ftKB)	Spud Date	P & A Date
4,733.00	9.00	5/31/1973	
Comment			
re-entry of Zimbleman-Patton 1			
Directions To Well			
I-76 FRONTAGE RD & RD 75 -1/2. EAST 9/10 TO GATE. SOUTH 3/10 TO TRACKS. EAST 3/10 INTO. ANCHORS WHERE TESTED ON 2-29-08			
Surface Location (Congressional)			
Quarter 1	Quarter 2	Quarter 3	Quarter 4
		SW	NW
Section	Township	Twship...	Range
3	2	N	62 W
Bottom Hole Location			
North-South Distance (ft)	From N or S Line	East-West Distance (ft)	From E or W Line
Plug Back Total Depths			
Date	Depth (ftKB)	Method	Com
6/4/1973	6,922.0	CASING TALLY	
3/28/2008	6,902.0	TAG	TAGGED FILL WITH OLD TBG. THATS 1' OF RAT...
3/31/2008	6,898.8	TAG	TAGGED WITH TBG.
6/5/2009	6,904.8	TAG	TAGGED FILL W/TBG, USING TBG TALLY.
Wellbore Sections			
Section Des	Size (in)	Act Top (ftKB)	Act Btm (ftKB)
SURFACE	12 1/4	9.0	130.0
PRODUCTION	7 7/8	130.0	7,000.0
Zone Statuses			
Zone Name	Status Date	Status	Job
J SAND	6/23/1973	PR	DRILLING/COMPLETION - ORIGINAL, 7/5/1973 00:00
Casing Strings			
Surface, 128.0ftKB			
Casing Description	Run Date	OD (in)	Wt/Len (l...)
Surface	6/1/1973	8 5/8	24.00
Grade	Top (ftKB)	Set Depth...	
	9.0	128.0	
Production, 6,983.0ftKB			
Casing Description	Run Date	OD (in)	Wt/Len (l...)
Production	6/4/1973	4 1/2	10.50
Grade	Top (ftKB)	Set Depth...	
	9.0	6,983.0	
Cement			
Description	Top Depth (ftKB)	Bottom Depth (ftKB)	
SURFACE CASING CEMENT	9.0	128.0	
Description	Top Depth (ftKB)	Bottom Depth (ftKB)	
PRODUCTION CASING CEMENT	6,604.0	6,983.0	
Tubing Components			
Item Des	OD (in)	Wt (lb/ft)	Grade
Tubing	2 3/8	4.70	J-55
Seal Nipple	2 3/8	4.70	N-80
Notched collar	2 3/8	4.70	J-55
Jts	Len (ft)	Btm (ftKB)	Btm (TVD) (ftKB)
211	6,819.06	6,826.1	
1	1.10	6,827.2	
1	0.42	6,827.6	
Perforation Data			
Zone	Bnch/St g	Entered Shot Total	Top (ftKB)
J SAND, ORIGINAL HOLE		6	6,849.0
			Btm (ftKB)
			6,901.0
			Date
			6/23/1973
Stimulations & Treatments			
Date	Zone	Primary Job Type	
6/24/1973	J SAND, ORIGINAL HOLE		
Technical Result	Tech Result Details	Tech Result Note	
Comment			
Other In Hole			
Run Date	Des	OD (in)	Top (ftKB)
			Btm (ftKB)
Logs			
Date	Type	Top (ftKB)	Btm (ftKB)
6/3/1973	Compensated Density	6,050.0	6,948.0
6/3/1973	Induction	6,050.0	6,946.0
6/23/1973	Cement Bond		
8/29/2012	GYRO	11.0	6,800.0