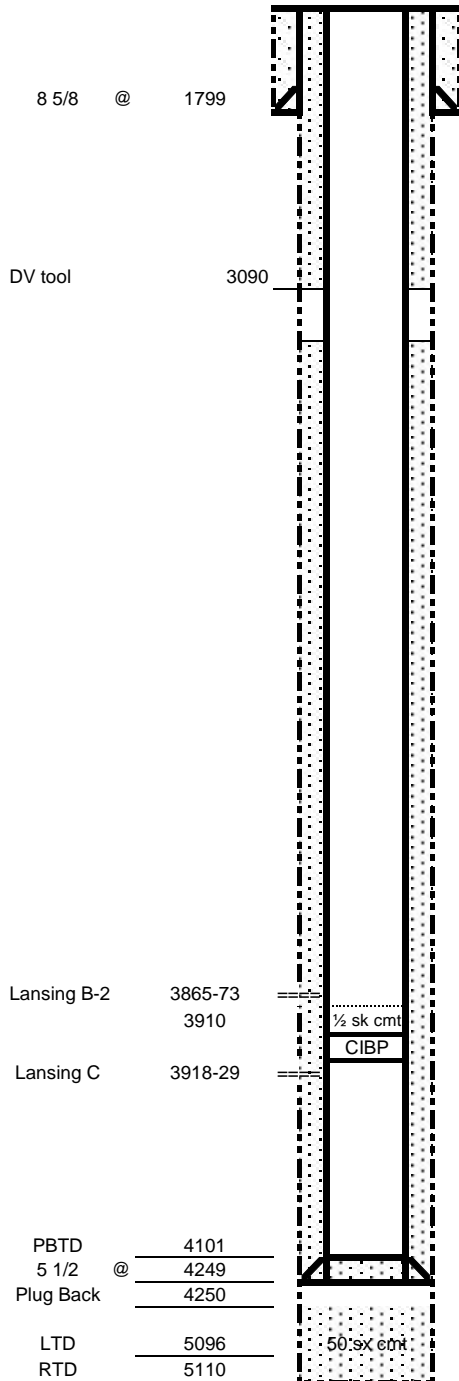


Date: 7/3/12
Preparer: twm
Lease #: 1093

Wellname: **Comanche Federal C 4**
Field: SE Campo
County: Baca State: CO
API: 05-009-06505

Spot Location 760 FSL 660 FEL
Sec: 1
Twp: 35S
Rge: 46W

KB: 4140
GL: 4128
Diff: 12



CASING

Size	Weight	Grade	Depth	Cement	Date Cmt'd	Comment
8 5/8	24	K-55	1799	1715	5/18/92	Cmt Circ after 3 squeezes
5 1/2	14	K-55	4249	350	5/27/92	TOC 3090
DV tool			3090	400	5/27/92	cement to surface

DST'S

Cored Lansing C Sand	3900 to 3942'
----------------------	---------------

PERFORATIONS

Formation	Top	Btm	SPF	# of holes	Date	Status
Lansing B-2	3865	3873	4	32	6/23/92	Open
Lansing C	3918	3929	4	44	6/4/92	Below CIBP

WELL HISTORY

5/16/92	Cemented surface casing with 675 sx. No returns while cementing. Ran temp log, TOC @ 1440'. Perf 1375-77', 8 shots. Cannot circulate. Squeeze cement with 200 sx. WOC 3 hrs. Break circulation through perfs with full returns. Cement again with 540 sx, good circ while cementing. Cement did not circulate. WOC 6 hrs. Ran temp log, TOC @ 840'. Perf 830-32' 4 shots. Cement w/ 300 sx. Cement circ.
5/27/92	Drill to RTD 5110'. Plug back to 4250' with 50 sx cement. After cement bottom of 5 1/2" casing, open DV tool, break circulation and circulate some cement to surface.
6/4/92	Blow hole clean w/air. Dump 500 gals diesel. Perf Lansing C 3918 -29, 4 SPF TIH w/ PKR and 2 7/8 tbg. found FL at 3300'. With Pkr swinging swab 12 bbl Diesel and 54 bbl water in 1 hr, No show of O&G Break down with 2500 gals OSA and 88 ball sealers, 6 bpm @ 1481 # Swab 22 BF no show O&G Swb dry. ONFU 3200' FS Swb 7 BF in 3 hrs. ONFU 3300' FS Swb 9 BF in 9 hrs. ONFU 3500' FS, Swb 3 BF in 4 hrs.Swb dry. ONFU 3500' FS, Swb 3 BF in 4 hrs.Swb dry. Frac Lansing C w/ 11,000 gals My-T-Oil and 28,000 # 16/30 sand. 17 bpm @ 1600 psig ISIP 1091 #, 15 min 845 # 286 bbl ld in formation. 63 hr. SITP 700 psig. Flow back 100 BLD @ 380 psig FTP.
6/23/92	Set CIBP @ 3910 w/ 1/2 sk on top Perf Lansing B-2 3865-73'. After 5 min flowing 250 psig surface, Flow 8 BLD in 5 hrs. ONSIP 440# Flow 9 hrs, stabilized to 10 # FP after 3 hrs. Flow 750 mcf. Kill well, RIH w/ SN and 2 3/8" tbg. RIH w/swab FL @ 2500' Swb 44 BLD in 5 hrs well kicked off flowing to tank overnite. Flow back 12 BLD overnite. Flowing dry gas. SI for evaluation
12/19/92	Install 6 Anode GB east of well ran neg cable to well. Waiting to install AC and rectifier.
8/18/94	MIT. RIH w/ PKR and set @ 3824'. Pressure up annulus to 1060# lose 8 # in 15 min. TIH w/ SN and 2 3/8" tubing. FL @ 2200'. Swb 36 BW in 4 hrs. ONFU FL @ 3800'. Swb 4 BW in 5 hrs. Swb dry. ONFU FL @ 3700'. Swb 3.5 BW. Light blow of gas. SI
5/17/07	MIT OK
8/9/12	MIT. Packer and tubing already in well. PKR @ 3860'. Fill annulus with fresh water Pressure to 400 psig dropped to 360 psig in 15min Pressure recorded. COGCC did not witness.

COMMENTS