

SWEPI LP

CONSTRUCTION LAYOUT FOR

NORTH CASTOR GULCH #2-16, #3-16, #4-16 & #5-16
SECTION 16, T5N, R91W, 6th P.M.
TRACT 66

FIGURE #1

SCALE: 1" = 60'

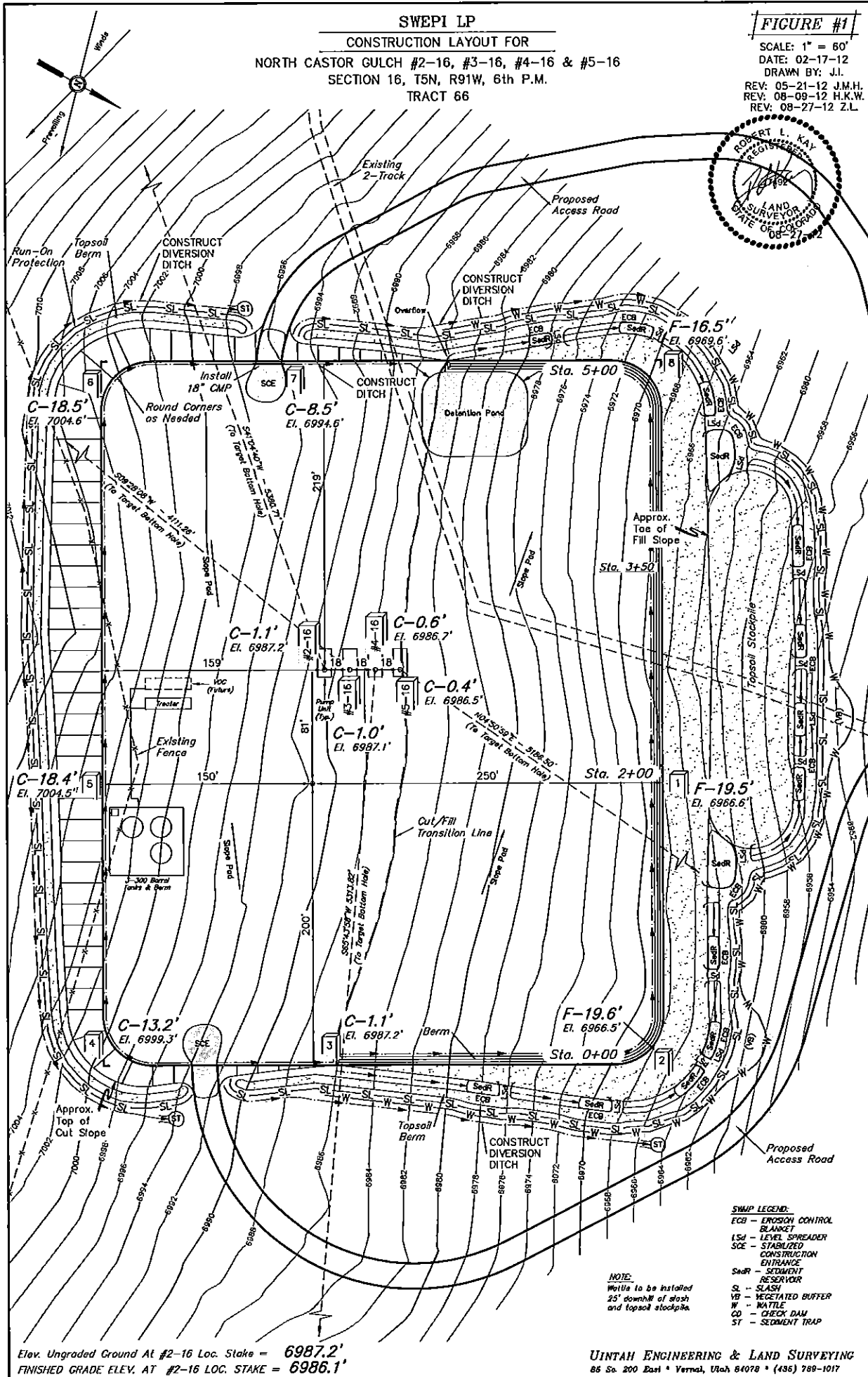
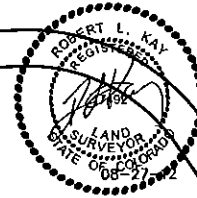
DATE: 02-17-12

DRAWN BY: J.I.

REV: 05-21-12 J.M.H.

REV: 08-09-12 H.K.W.

REV: 08-27-12 Z.L.



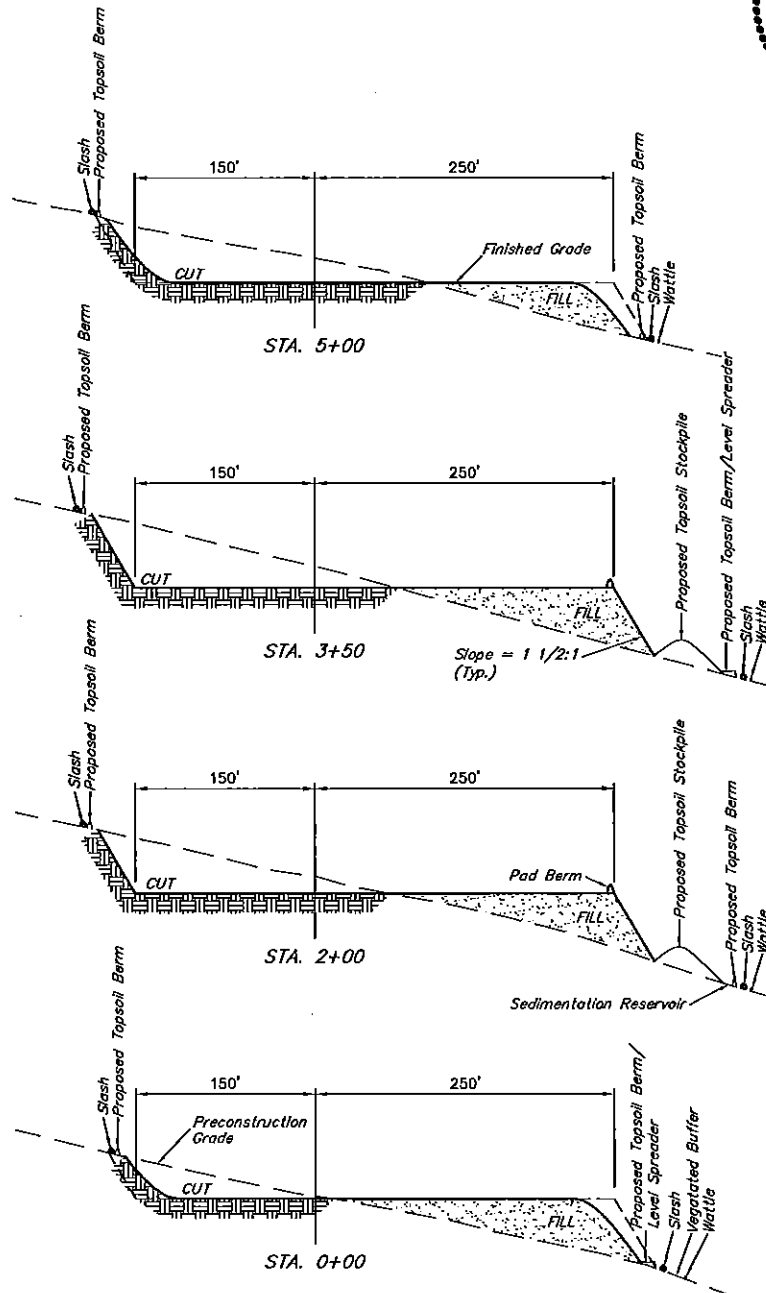
Elev. Ungraded Ground At #2-16 Loc. Stake = 6987.2'
FINISHED GRADE ELEV. AT #2-16 LOC. STAKE = 6986.1'

UINTAH ENGINEERING & LAND SURVEYING
86 So. 200 East • Vernal, Utah 84078 • (435) 789-1017

X-Section
 Scale
 1" = 100'
 DATE: 12-05-11
 DRAWN BY: J.J.
 REV.: 05-21-12 J.M.H.
 REV.: 08-27-12 Z.L.

SWEPI LP
 CONSTRUCTION LAYOUT CROSS SECTIONS FOR
 NORTH CASTOR GULCH #2-16, #3-16, #4-16 & #5-16
 SECTION 16, T5N, R91W, 6th P.M.
 TRACT 66

FIGURE #2



NOTE:

Topsoil should not be
 Stripped Below Finished
 Grade on Substructure Area.

* NOTE:
 FILL QUANTITY INCLUDES
 3% FOR COMPACTION

APPROXIMATE YARDAGES

(6") Topsoil Stripping = 4,510 Cu. Yds.
 Remaining Location = 41,210 Cu. Yds.
 TOTAL CUT = 45,720 CU.YDS.
 FILL = 41,210 CU.YDS.

EXCESS MATERIAL = 4,510 Cu. Yds.
 Topsoil = 4,510 Cu. Yds.
 EXCESS UNBALANCE = 0 Cu. Yds.
 (After Interim Rehabilitation)

APPROXIMATE ACREAGES

WELL SITE DISTURBANCE = ± 7.056 ACRES
 ACCESS ROAD DISTURBANCE = ± 7.231 ACRES
 TOTAL = ± 14.287 ACRES

UINTEH ENGINEERING & LAND SURVEYING
 85 So. 200 East • Vernal, Utah 84078 • (435) 788-1017