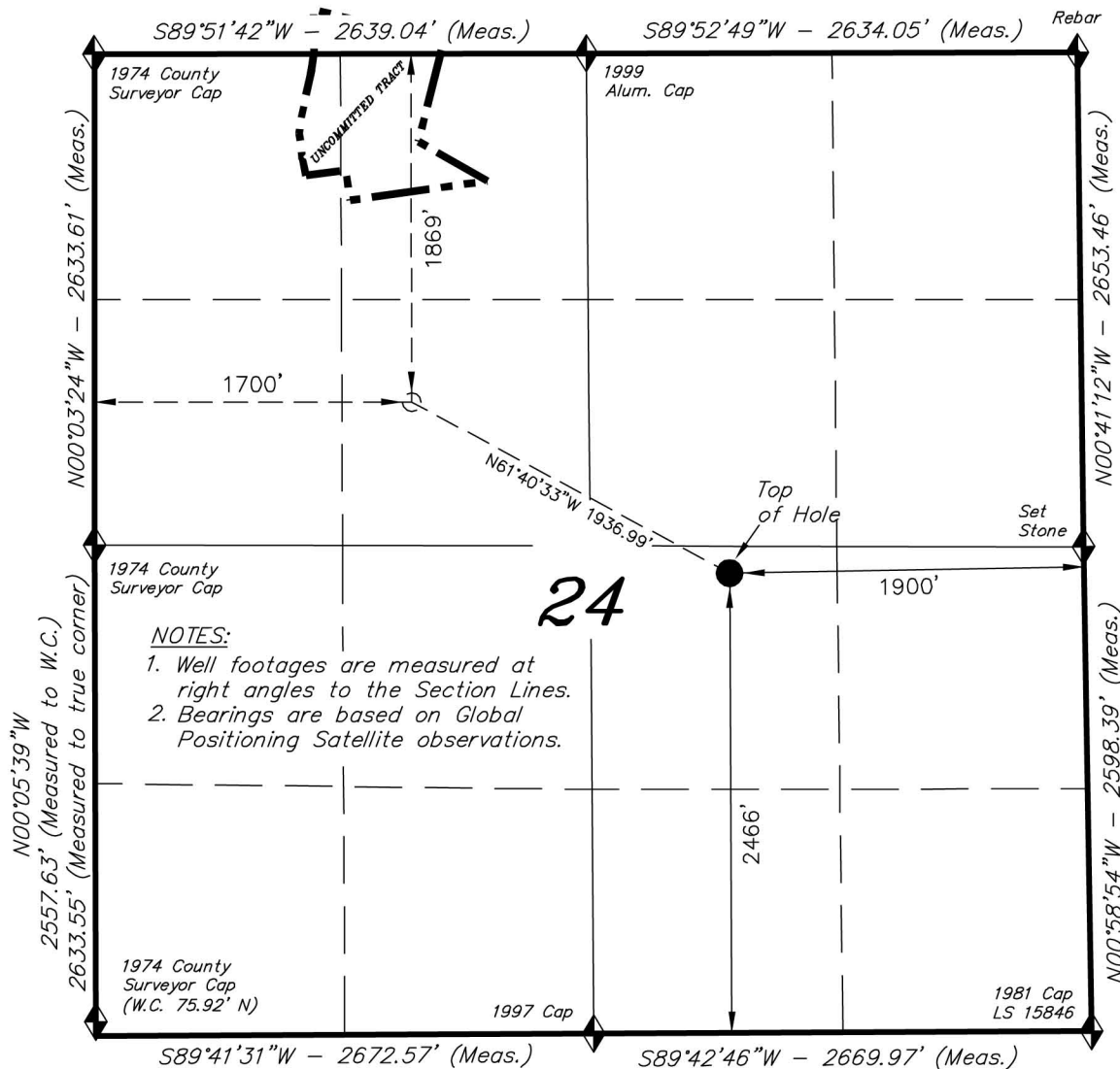


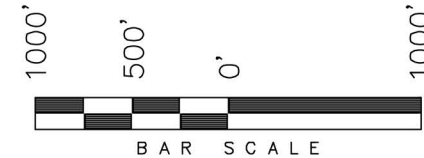
# T6S, R93W, 6th P.M.

ENCANA OIL & GAS (USA) INC



WELL LOCATION, ALP FEE 24-6B (J24), LOCATED AS SHOWN IN THE NW 1/4 SE 1/4 OF SECTION 24, T6S, R93W, 6th P.M. GARFIELD COUNTY, COLORADO.

TARGET BOTTOM HOLE, ALP FEE 24-6B (J24), LOCATED AS SHOWN IN THE SE 1/4 NW 1/4 OF SECTION 24, T6S, R93W, 6th P.M. GARFIELD COUNTY, COLORADO.



**WELL LOCATION:**  
**ALP FEE 24-6B (J24)**

ELEV. UNGRADED GROUND = 5679.3'

THIS IS TO CERTIFY THAT THE ABOVE PLAT WAS PREPARED FROM FIELD NOTES OF SURVEYS MADE BY ME OR UNDER MY SUPERVISION. THE LOCATION HAS BEEN STAKED ON THE GROUND AS SHOWN ON THE PLAT, AND THAT THE SAME ARE TRUE AND CORRECT TO THE BEST OF MY KNOWLEDGE AND BELIEF.

06-26-12  
# 30125  
REGISTERED LAND SURVEYOR  
REGISTRATION No. 30125  
STATE OF COLORADO

◆ = SECTION CORNERS LOCATED

Basis of elevation is the Rifle 2 Triangulation Station. 39°31'53.80" N Lat. & 107°47'07.78" W Long. (NAD 83). Elevation = 5323.1' (NAVD88).

NAD 83 (SURFACE LOCATION)	
LATITUDE =	39°30'41.54" (39.511538)
LONGITUDE =	107°43'18.02" (107.721672)
NAD 83 (BOTTOM HOLE LOCATION)	
LATITUDE =	39°30'50.63" (39.514065)
LONGITUDE =	107°43'39.76" (107.727712)

**TRI STATE LAND SURVEYING & CONSULTING**

180 NORTH VERNAL AVE. - VERNAL, UTAH 84078  
(435) 781-2501

DATE SURVEYED: 12-08-11	SURVEYED BY: C.D.S.	SHEET <b>2f</b> OF 11
DATE DRAWN: 03-19-12	DRAWN BY: M.W.	
REVISED: 06-26-12 - M.W.	SCALE: 1" = 1000'	