

75N, R90W, 5th. P.M.

1914 Brass Cap,  
20' High, Pile of  
Stones, S/E/W  
Fence  
Lat: 40.349025°  
Long: 107.509222°

589°33'02"W - 2676.46' (Meas.)

588°19'48"W - 2678.96' (Meas.)

1914 Brass Cap,  
0.2' High, Pile of  
Stones, Steel Post  
Lat: 40.348753°  
Long: 107.528425°

1914 Brass Cap,  
0.4' High, E/W  
Fence  
Lat: 40.348811°  
Long: 107.518828°

S04°52'40"E - 5305.53' (Meas.)

NOTE:  
THE PROPOSED BOTTOM HOLE BEARS S38°06'56"W  
4283.87' FROM THE PROPOSED WELL HEAD WHICH  
IS LOCATED IN THE NW 1/4 NW 1/4 OF SECTION  
33, T5N, R90W, 6th. P.M. AT A DISTANCE OF  
1223' FNL 1007' FWL

32

HERRING DRAW #4-33  
Target Bottom Hole

1914 Brass Cap,  
0.7' Below Ground  
Lat: 40.334247°  
Long: 107.526808°

1914 Brass Cap,  
2.5' High, Steel Post  
Lat: 40.334286°  
Long: 107.518881°

N89°38'44"E - 2210.78' (Meas.)

N89°19'03"E - 2679.33' (Meas.)

Set Marked Stone  
Lat: 40.334372°  
Long: 107.509275°

N00°08'29"E - 5339.80' (Meas.)

S38°06'56"W - 4283.87'  
(To Bottom Hole)

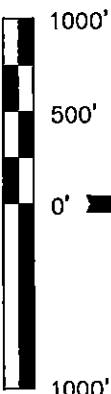
Well location, HERRING DRAW #4-33 (TARGET  
BOTTOM HOLE), located as shown in the SW 1/4  
SE 1/4 of Section 32, T5N, R90W, 6th. P.M.,  
Moffat County, Colorado.

#### BASIS OF ELEVATION

SPOT ELEVATION AT THE NORTHEAST CORNER OF SECTION 31,  
T5N, R90W, 6th P.M. TAKEN FROM THE HAMILTON  
QUADRANGLE, COLORADO, MOFFAT COUNTY, 7.5 MINUTE QUAD  
(TOPOGRAPHIC MAP) PUBLISHED BY THE UNITED STATES  
DEPARTMENT OF THE INTERIOR, GEOLOGICAL SURVEY. SAID  
ELEVATION IS MARKED AS BEING 6664 FEET.

#### BASIS OF BEARINGS

BASIS OF BEARINGS IS A G.P.S. OBSERVATION.



SCALE

CERTIFICATE

THIS IS TO CERTIFY THAT THE ABOVE PLAT WAS PREPARED FROM  
FIELD NOTES OF ACTUAL SURVEYS MADE BY ME OR UNDER MY  
SUPERVISION AND THAT THE SAME ARE TRUE AND CORRECT TO THE  
BEST OF MY KNOWLEDGE AND BELIEF.

REGISTERED LAND SURVEYOR  
REGISTRATION NO. 17433  
STATE OF COLORADO  
08-17-12

UINTAH ENGINEERING & LAND SURVEYING

85 SOUTH 200 EAST - VERNAL, UTAH 84078

(435) 789-1017

SCALE 1" = 1000'

DATE SURVEYED: 08-17-12 DATE DRAWN: 08-17-12

PARTY D.N. Z.L. REFERENCES G.L.O. PLAT

WEATHER HOT FILE

SWEP1 LP

#### LEGEND:

— = 90° SYMBOL

● = PROPOSED WELL HEAD.

▲ = SECTION CORNERS LOCATED.

T5N, R90W, 5th. P.M.

SWEPI LP

1914 Brass Cap,  
2.0' High, Pile of  
Stones, S/E/W  
Lat: 40.349025°  
Long: 107.508222°

1914 Brass Cap,  
2.3' High, Pile of  
Stones  
Lat: 40.349286°  
Long: 107.489947°

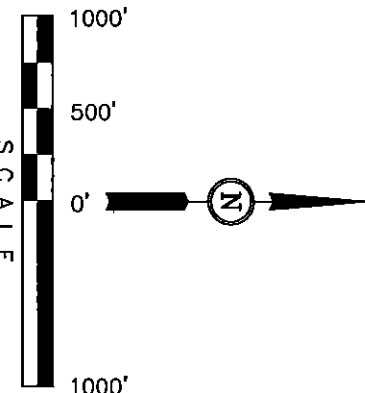
Well location, HERRING DRAW #4-33 (SURFACE LOCATION), located as shown in the NW 1/4 NW 1/4 of Section 33, T5N, R90W, 6th. P.M., Moffat County, Colorado.

BASIS OF ELEVATION

SPOT ELEVATION AT THE NORTHEAST CORNER OF SECTION 31, T5N, R90W, 6th P.M. TAKEN FROM THE HAMILTON QUADRANGLE, COLORADO, MOFFAT COUNTY, 7.5 MINUTE QUAD (TOPOGRAPHIC MAP) PUBLISHED BY THE UNITED STATES DEPARTMENT OF THE INTERIOR, GEOLOGICAL SURVEY. SAID ELEVATION IS MARKED AS BEING 6664 FEET.

BASIS OF BEARINGS

BASIS OF BEARINGS IS A G.P.S. OBSERVATION.



CERTIFICATE

THIS IS TO CERTIFY THAT THE ABOVE PLAT WAS PREPARED FROM FIELD NOTES OF ACTUAL SURVEYS MADE BY ME OR UNDER MY SUPERVISION AND THAT THE SAME ARE TRUE AND CORRECT TO THE BEST OF MY KNOWLEDGE AND BELIEF.

REGISTERED LAND SURVEYOR  
REGISTRATION NO. 17920  
STATE OF COLORADO  
08-17-12

UTIAH ENGINEERING & LAND SURVEYING  
85 SOUTH 200 EAST - VERNAL, UTAH 84078  
(435) 789-1017

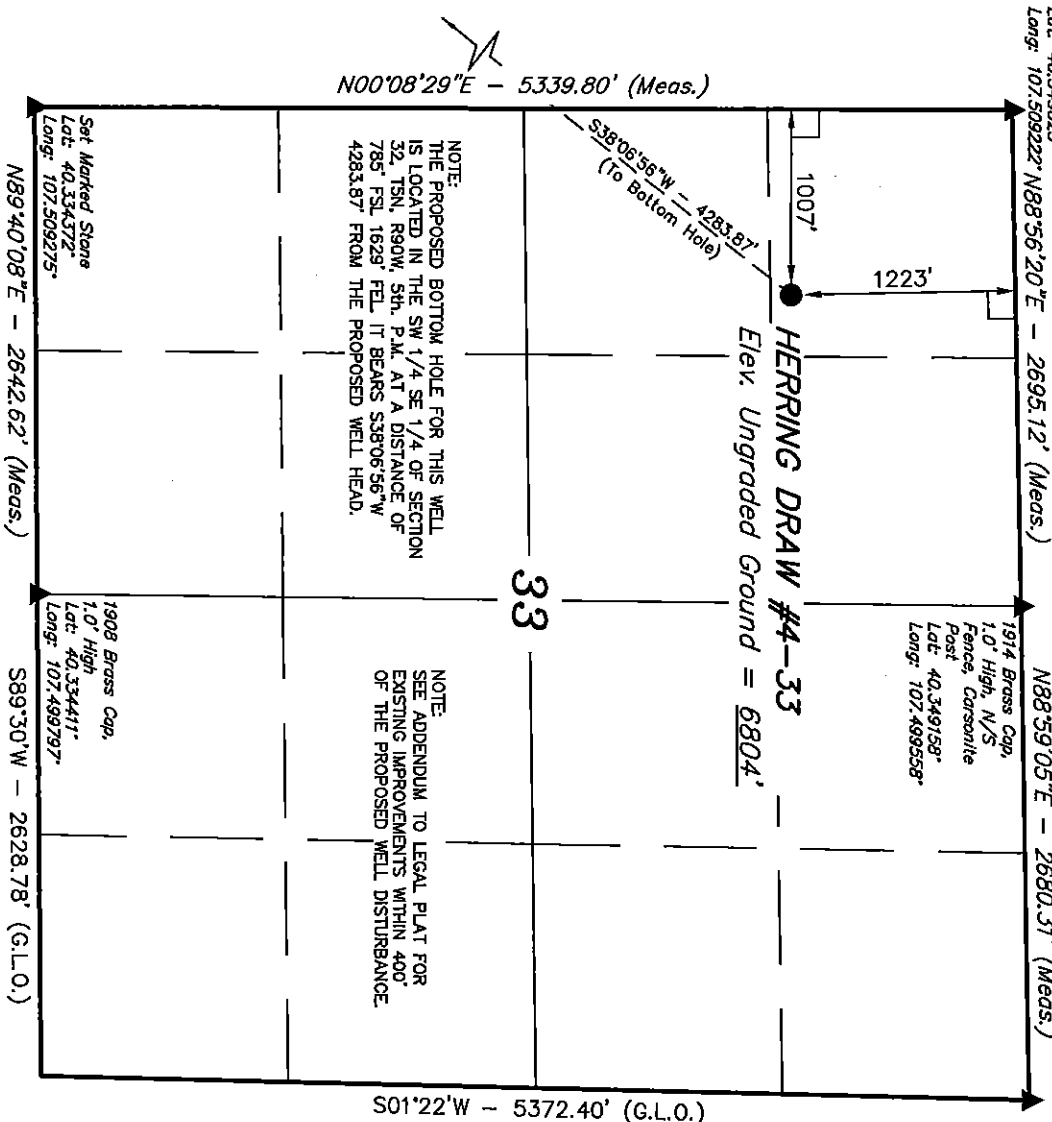
SCALE 1" = 1000'  
DATE SURVEYED: 08-17-12 DATE DRAWN: 08-17-12

PARTY D.N., Z.L. REFERENCES G.L.O. PLAT

WEATHER HOT FILE SWEPI LP

LEGEND:

- = 90° SYMBOL
- = PROPOSED WELL HEAD.
- ▲ = SECTION CORNERS LOCATED.



NOTE:  
THE PROPOSED BOTTOM HOLE FOR THIS WELL IS LOCATED IN THE SW 1/4 SE 1/4 OF SECTION 32, T5N, R90W, 5th. P.M. AT A DISTANCE OF 785' FSL 1629' FEL IT BEARS S38°06'56\"/>

NOTE:  
SEE ADDENDUM TO LEGAL PLAT FOR EXISTING IMPROVEMENTS WITHIN 400' OF THE PROPOSED WELL DISTURBANCE.

PDOP = 2.1

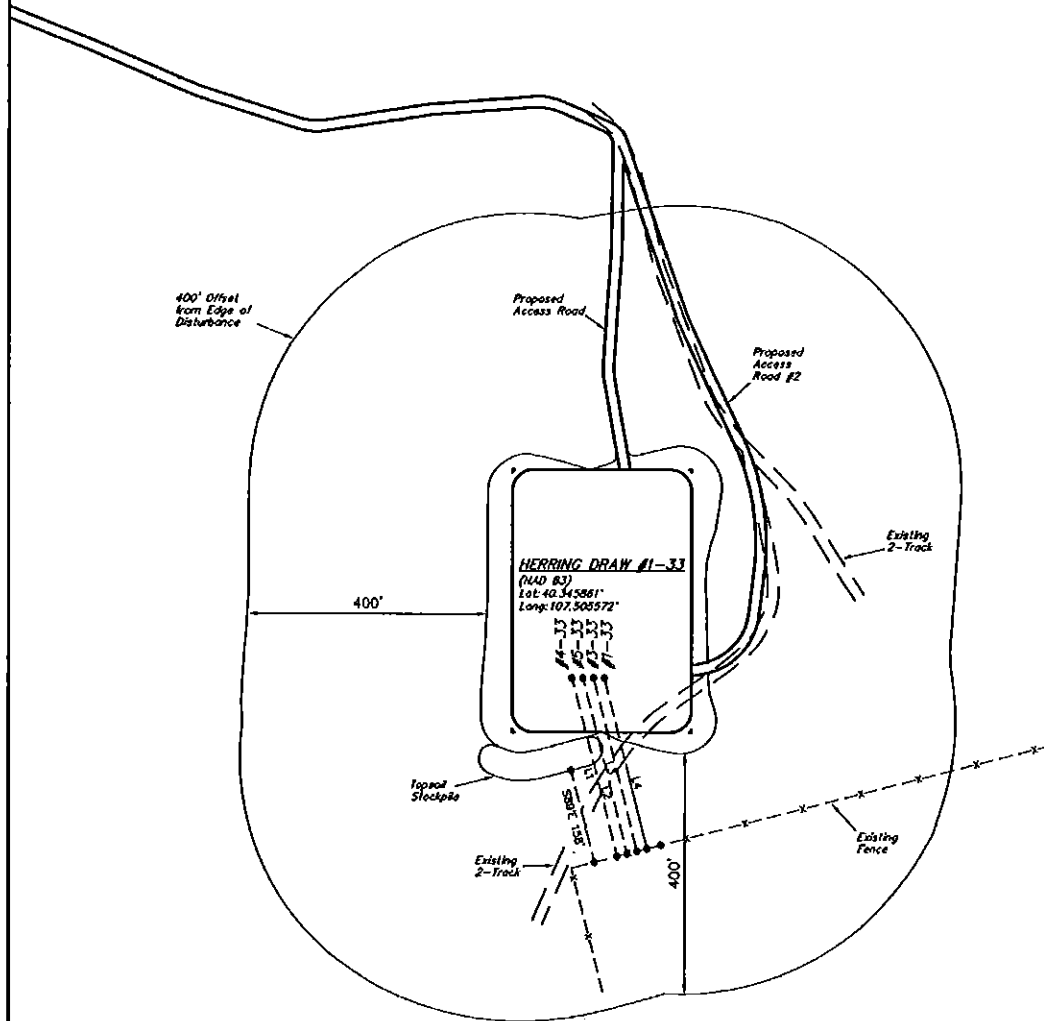
NAD 83 (SURFACE LOCATION)  
LATITUDE = 40°20'44.59\"/>

# SWEPI LP

## ADDENDUM TO LEGAL PLAT FOR

HERRING DRAW #1-33, #3-33, #4-33 & #5-33  
SECTION 33, T5N, R90W, 6th P.M.  
NW 1/4 NW 1/4

SCALE: 1" = 200'  
DATE: 07-11-11  
DRAWN BY: J.I.  
REV: 11-02-11  
REV: 05-18-12 Z.L.  
REVISED: 07-25-12  
REVISED: 08-10-12



LINE TABLE

LINE	DIRECTION	LENGTH
L1	S89°01'18"E	306.04'
L2	S89°01'18"E	301.56'
L3	S89°01'18"E	297.08'
L4	S89°01'18"E	292.60'