



**Corporate Office**

1775 Sherman Street, #3000  
Denver, Colorado 80203  
303.860.5800  
www.petd.com

9/26/2012

Department of Natural Resources  
Oil and Gas Conservation Commission  
The Chancery Building  
1120 Lincoln St., Suite 801  
Denver, CO 80203

Re: **Rule 318Ae – Proposed Spacing Unit**  
Stonebraker 28V-414  
Section 28 Township 2 North, Range 64 West  
Weld County, Colorado

Dear Director,

Petroleum Development Corporation doing business as PDC Energy ("PDC") hereby certifies to the Director that PDC holds all minerals in the proposed 160 acre wellbore spacing unit consisting of the N2N2 of Sec 28 T2N R64W; therefore, no 30-day notice is needed to owners in the proposed wellbore spacing unit. This horizontal well location crosses existing unit boundaries and requires the formation of the proposed unit. PDC hereby requests the Director to approve the well.

If you should have any questions or concerns regarding this permit, please contact the undersigned at (303) 860-5800.

Sincerely,

A handwritten signature in blue ink, appearing to read "Liz Lindow".

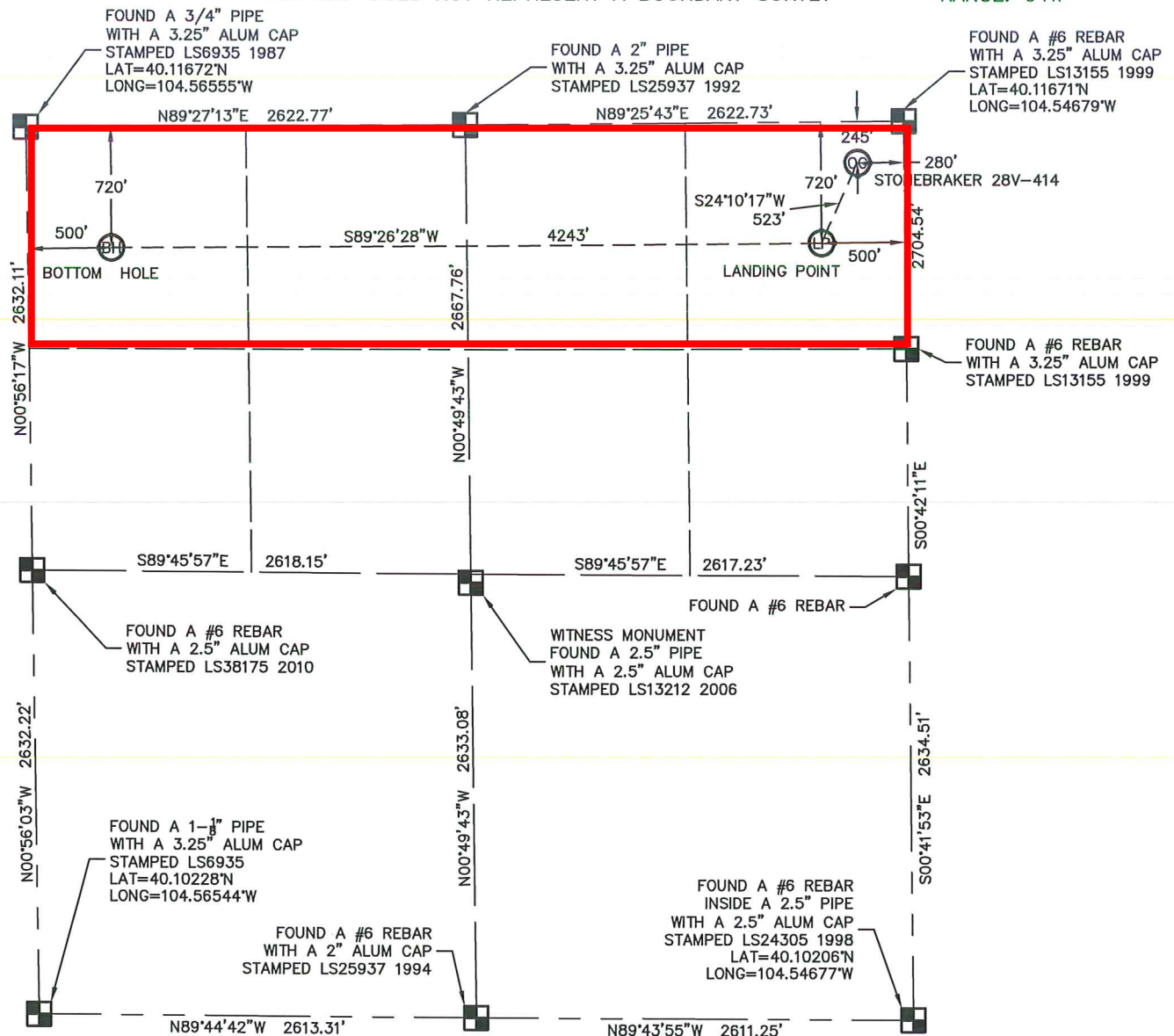
Liz Lindow  
Permit Analyst  
PDC Energy



## WELL LOCATION CERTIFICATE

STONEBRAKER 28V-414

THIS MAP DOES NOT REPRESENT A BOUNDARY SURVEY

SECTION: 28  
TOWNSHIP: 2N  
RANGE: 64W

In accordance with a request from MAC NEUMANN with PDC ENERGY, INC.

King Surveyors Inc. has determined the surface location of the STONEBRAKER 28V-414 to be 245' from the NORTH line and 280' from the EAST line, the landing point to be 720' from the NORTH line and 500' from the EAST line and the bottom hole to be 720' from the NORTH line and 500' from the WEST line, as measured at right angles, from the section lines of Section 28, Township 2 North, Range 64 West of the Sixth Principal Meridian, County of Weld, State of Colorado.

I hereby state that this Well Location Certificate was prepared by me, or under my direct supervision, that the fieldwork was completed on 6-19-2012, for and on behalf of PDC ENERGY, INC., that this is not a Land Survey Plat or an Improvement Survey Plat, and that it is not to be relied upon for establishment of fence, building, or other future improvement lines.

## SURFACE LOCATION

LATITUDE: 40.11604°N  
LONGITUDE: 104.54779°W  
PDOP: 2.0  
ELEV: 4963'  
1/4, 1/4: NE1/4 NE1/4  
NEAREST PROPERTY LINE: 245' NORTH

## LANDING POINT

LATITUDE: 40.11474°N  
LONGITUDE: 104.54858°W

## BOTTOM HOLE

LATITUDE: 40.11475°N  
LONGITUDE: 104.56374°W




## NOTES:

- 1) Bearings shown are Grid Bearings of the Colorado State Plane Coordinate System, North Zone, North American Datum 1983/2007. The lineal dimensions as contained herein are based upon the "U.S. Survey Foot."
- 2) Ground elevations are based on an observed GPS elevation (NAVD 1988 DATUM).
- 3) NEAREST EXISTING WELL: STONEBRAKER 42-28 1757' SOUTH
- 4) IMPROVEMENTS: See LOCATION DRAWING for all visible improvements within 400' of the disturbed area.
- 5) SURFACE USE: CROP FIELD
- 6) FIELD OPERATOR: BEN ADSIT

## NOTE

According to Colorado law, you must commence any legal action based upon any defect in this W.L.C. within three years after you discover such defect. In no event, may any action based upon any defect in this survey be commenced more than ten years after the date of the certificate shown hereon. (13-80-105 C.R.S.)

## LEGEND

-  = FOUND ALIQUOT MONUMENT AS DESCRIBED
-  = CALCULATED POSITION
-  = SET ALIQUOT MONUMENT AS DESCRIBED

Michael Chad Dilka  
381106  
6/26/2012  
Michael Chad Dilka - On Behalf Of King Surveyors, Inc.  
Colorado Licensed Professional Land Surveyor #38106

PROJECT#: 2012245