

LOCATION DRAWING

VEGETATION:
WHEAT

SURFACE USE:
AGRICULTURAL

REFERENCE POINT

LATITUDE: 40.55404

LONGITUDE: -104.06890

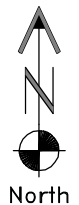
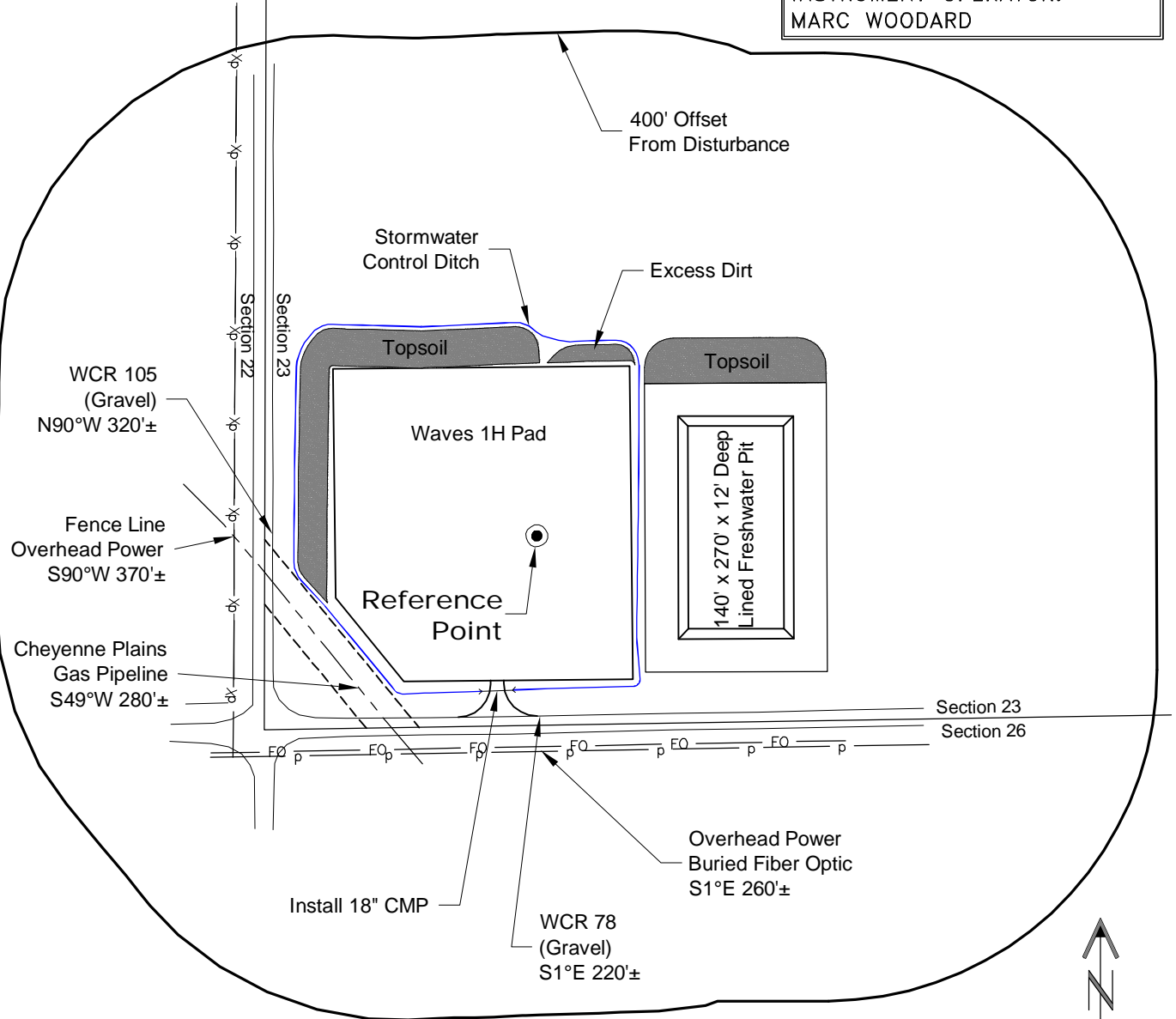
FOOTAGE: 230 FSL 330 FWL

GROUND ELEVATION: 4905.0

PDOP: 2.0 DATE: 8/16/2012

INSTRUMENT OPERATOR:

MARC WOODARD



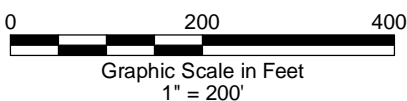
NOTE-DISTANCE TO NEAREST:
Property Line - S 230'
Public Road - WCR 78 - S 220'
Building - House S63°E 1850'±
Railroad - S4°E 21.2 Miles
Powerline - S 260'±

DISTURBANCE ACREAGE:
4.3± DRILLING OPERATIONS
2.3± FRESHWATER PIT
1.0± INTERIM RECLAIM

NOTE:

ALL PRODUCTION FACILITIES WILL BE ON PAD.

9/5/12



LAND SURVEYING AND MAPPING
LAFAYETTE - WINTER PARK
Ph 303 666 0379 Fx 303 665 6320

CONDOR ENERGY TECHNOLOGY LLC
WAVES 1H PAD

SW1/4 SW1/4 SECTION 23 T7N R60W
6th PM WELD COUNTY COLORADO