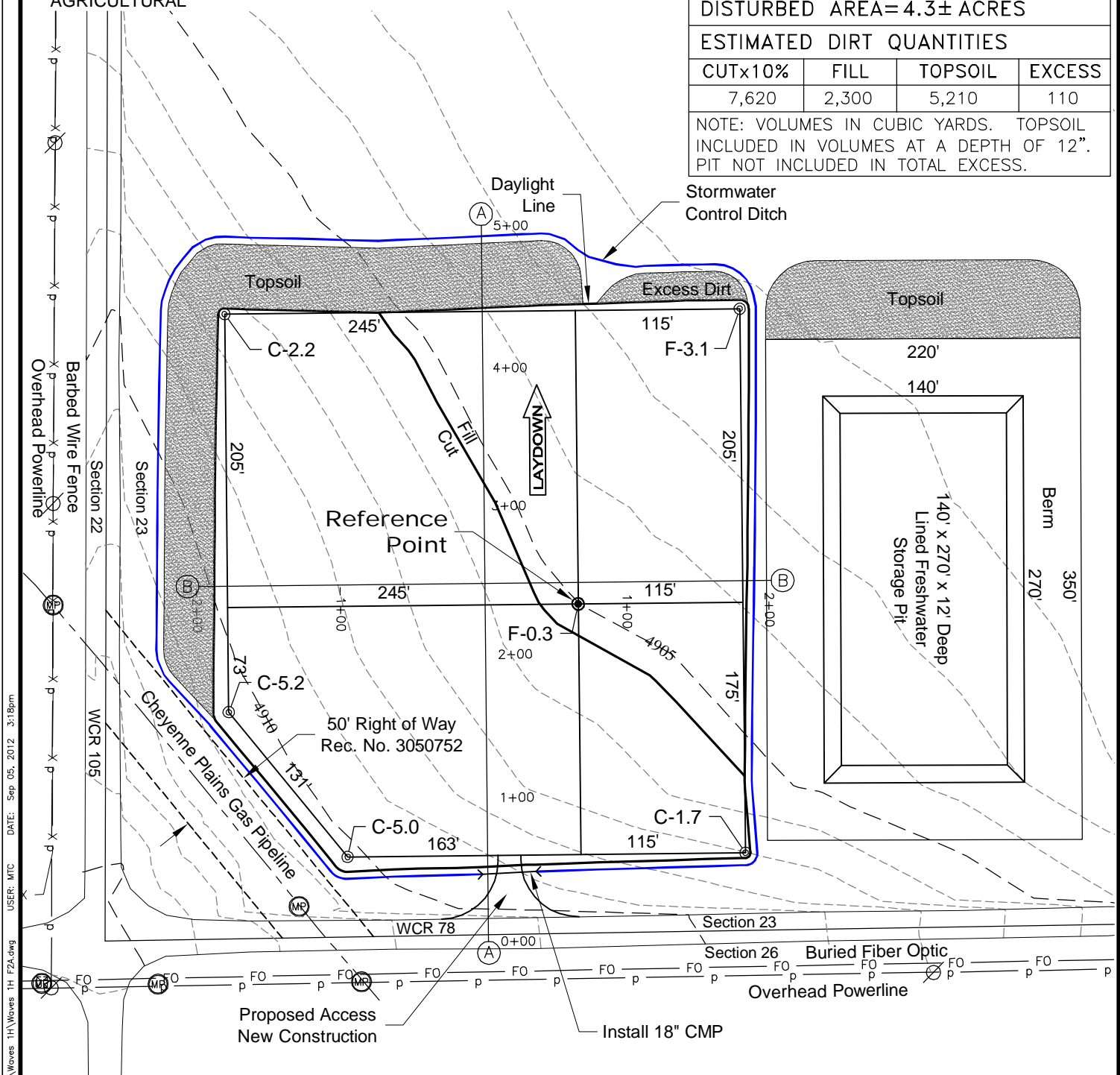


SURFACE USE:
AGRICULTURAL

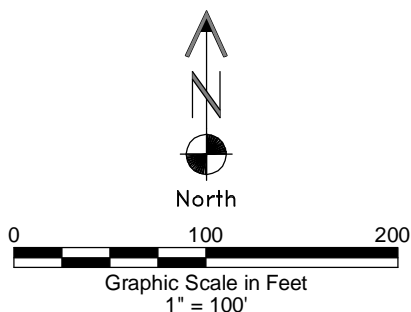
1 of 2

PAD 360'X380' ELEV=4905.3'			
DISTURBED AREA=4.3± ACRES			
ESTIMATED DIRT QUANTITIES			
CUTx10%	FILL	TOPSOIL	EXCESS
7,620	2,300	5,210	110
NOTE: VOLUMES IN CUBIC YARDS. TOPSOIL INCLUDED IN VOLUMES AT A DEPTH OF 12". PIT NOT INCLUDED IN TOTAL EXCESS.			



NOTE:
10% ALLOWANCE IS MADE FOR SOIL EXPANSION.

9/5/12



LAND SURVEYING AND MAPPING
LAFAYETTE - WINTER PARK
Ph 303 666 0379 Fx 303 665 6320

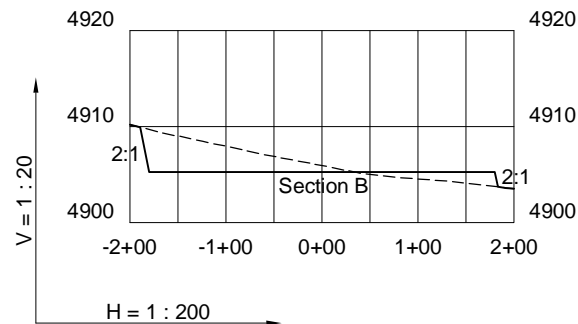
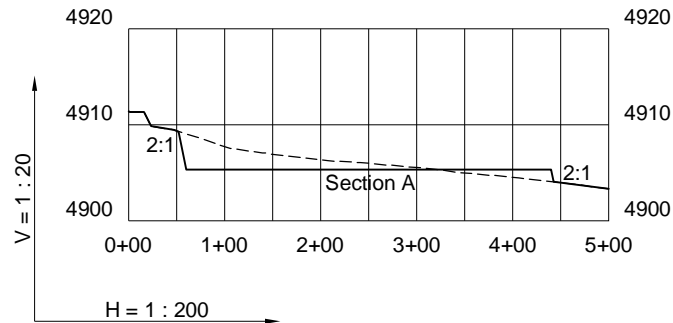
CONDOR ENERGY TECHNOLOGY LLC
WAVES 1H PAD

SW1/4 SW1/4 SECTION 23 T7N R60W
6th PM WELD COUNTY COLORADO

DWG: G:\GEOSURV\WeldzNorth\STXRA 112001\Wellplats\Waves 1H\Waves 1H F2A.dwg USER: MTC DATE: Sep 05, 2012 3:18pm

CONSTRUCTION LAYOUT DRAWING

2 of 2



----- Existing Ground
 _____ Proposed Grade

LAND SURVEYING AND MAPPING
LAFAYETTE - WINTER PARK
 Ph 303 666 0379 Fx 303 665 6320

CONDOR ENERGY TECHNOLOGY LLC
WAVES 1H PAD

SW1/4 SW1/4 SECTION 23 T7N R60W
6th PM WELD COUNTY COLORADO

9/5/12