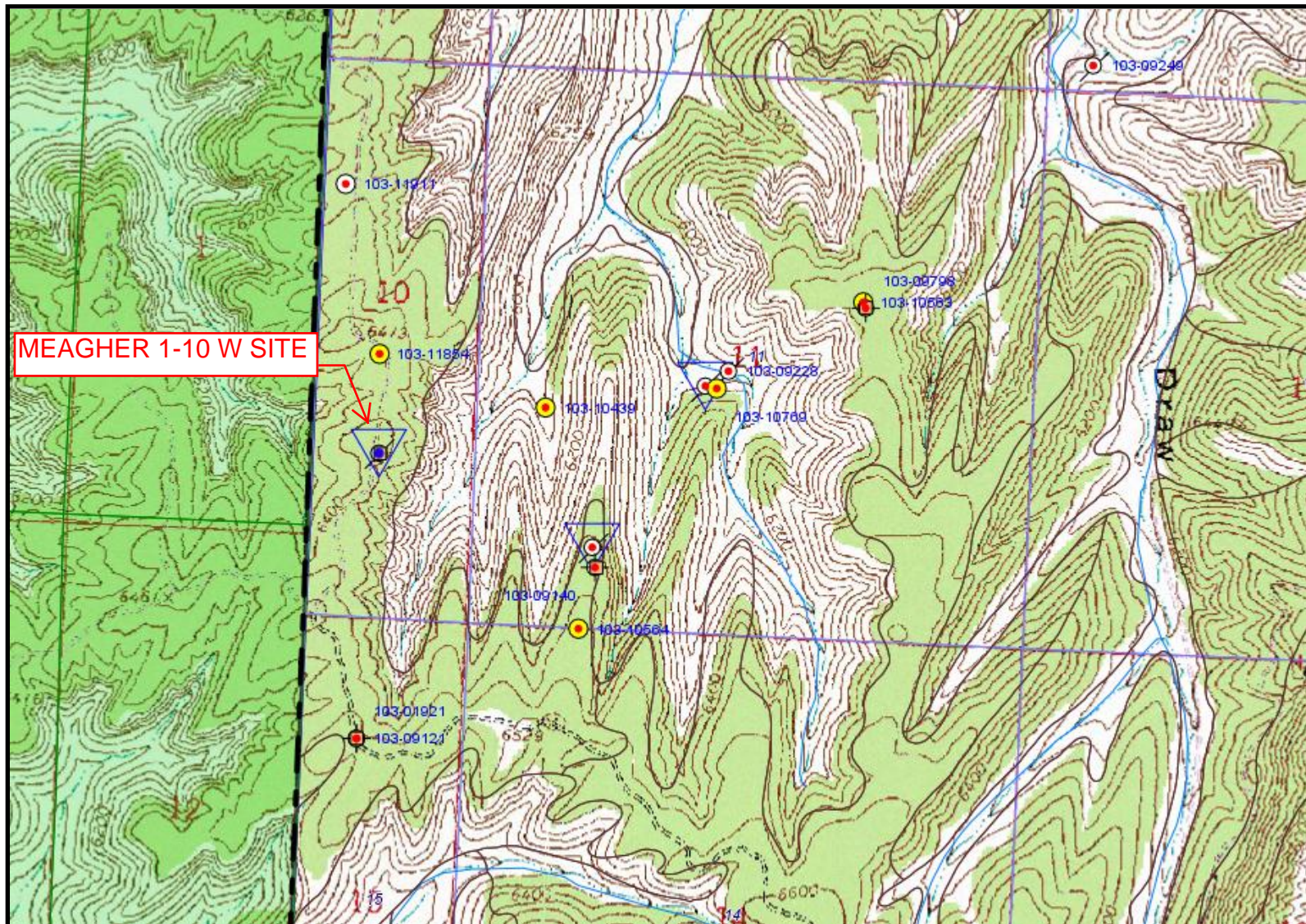


Coors Energy Meagher 1-10W API #103-09514

















From: [Panjabi,Susan](#)
To: [Baroumand, Soraya](#)
Cc: [Handwerk,Jill](#); [Lyon,Peggy](#)
Subject: RE: Requesting Native Thistle Identification: Owenby? Barneby?
Date: Monday, September 24, 2012 12:29:04 PM

Hello Sy,

Yes, please feel free to send specimens our way. Please include the collection location and date information, approximate population size, associated species, etc., for an herbarium specimen label. Please also note anything that may not be obvious from the specimen, such as, flowers purple on such and such a date, full plant height, etc.

Thanks,
Susan

Susan Spackman Panjabi
Botanist
Colorado Natural Heritage Program
Colorado State University
254 General Services Building
1475 Campus Delivery
Fort Collins, CO 80523-1475
(970) 491-2992, Fax: (970) 491-3349
www.cnhp.colostate.edu
<http://conserveonline.org/workspaces/corareplantinitiative>

Nature does not hurry, yet everything is accomplished. ~Lao Tzu

From: Baroumand, Soraya [mailto:Soraya.Baroumand@state.co.us]
Sent: Wednesday, September 19, 2012 4:11 PM
To: Panjabi,Susan
Subject: RE: Requesting Native Thistle Identification: Owenby? Barneby?

Yes, I have one small sample, and the Garfield County Weed Manager has the other small sample. These two samples are about three weeks old, (and are the same specimen as the close-up photos that I took "in-house"). The possibility of it being a native thistle of interest developed more and more w/research after the last inspection, (otherwise, I would have collected more samples. ☺)

Weed and vegetation specialist from the BLM GJ office also observed by specimen. They were keenly interested, and confirmed it to be a native thistle, but unable to ascertain the species. There were not left with a sample.

Steve Anthony, the Garfield County Weed Manager has the other segment, (I speak w/him frequently regarding noxious weeds in Garfield), and conveniently asked for his opinion on the specimen. So between the two of us, we have two "dried segments". And we can mail to you if

you'd like. Also, within the next two weeks, it is likely that my coworker or myself may be in vicinity to do routing general oil and gas operation inspections and we can collect more samples, if you'd like. The question is though, if specimen quality diminishes. When he and I arrived at location on August 29, 2012, the thistles leaves and stems in particular were browning and wilting and flower heads dying off in color, appearing beige-off white in color. My coworker noted that they were more vibrant a month prior (July 20, 2012), having greener leaves and purple flower heads. (although unable to see this in the July photo). I asked him if flower heads were whitish or pinkish by chance? He said No, there were "purple".

Since my visit, the inspection report will be updated notating that the thistle at this location was not a Colorado listed Noxious Weed. Also, the oil and gas operator was notified after I confirmed that noxious thistles were not on location, to ensure that they didn't go out and spray the weeds with herbicides. Operator has provided updates to surface owner, who originally expressed concern regarding what was originally thought of as state-listed noxious thistle. I also mentioned that identify of this native thistle was underway. And now, everyone is curious. . .

My knowledge of rare plants and native thistles is very elementary, but I'm learning more with time, and this definitely has piqued an interest!

Feel free to contact Steve Anthony, the Garfield County Weed Manager 970-625-8601, for a description of the sample with "esoteric" plant identification terms. And feel free to contact me at your convenience. Thank you for your assistance.

Soraya (Sy) Baroumand
Reclamation & Environmental Inspector
Colorado Oil & Gas Conservation Commission
(Office) 970-876-9910 (Cell) 970-620-3277
Email: soraya.baroumand@state.co.us
COGCC website: <http://cogcc.state.co.us>

From: Panjabi,Susan [mailto:SUSAN.PANJABI@colostate.edu]
Sent: Wednesday, September 19, 2012 3:07 PM
To: Baroumand, Soraya; Handwerk,Jill
Cc: Janis.Huggins@comcast.net; Lyon,Peggy
Subject: RE: Requesting Native Thistle Identification: Owenby? Barneby?

Hello,

The habitat looks right for *Cirsium barnebyi*, but it's not as tomentose as usual. However, we have seen plants that key to *C. barnebyi* except that they're too green, and maybe this is one of them. Did you collect a specimen?

Susan Spackman Panjabi
Botanist
Colorado Natural Heritage Program
Colorado State University
254 General Services Building
1475 Campus Delivery

Fort Collins, CO 80523-1475
(970) 491-2992, Fax: (970) 491-3349
www.cnhp.colostate.edu
<http://conserveonline.org/workspaces/corareplantinitiative>

Nature does not hurry, yet everything is accomplished. ~Lao Tzu

From: Baroumand, Soraya [<mailto:Soraya.Baroumand@state.co.us>]
Sent: Friday, September 14, 2012 2:45 PM
To: Panjabi,Susan; Handwerk,Jill
Cc: Janis.Huggins@comcast.net
Subject: Requesting Native Thistle Identification: Owenby? Barneby?

Hello. I am requesting help to identify native thistle. Could you call me at your convenience? Is this an ownbey thistle, or Barneby thistle? It was found while doing a final reclamation inspection of a plugged and abandoned well site for bond release.

I've included the email record to date, the inspection report done by co-worker which prompted my assistance to re-evaluate the site, and photos. Although I confirmed the thistle on the location to be native and not one listed on the Noxious List, I wanted to ensure that this wasn't one of the rare Colorado thistles. This was found approximately 600 feet east of the Utah state line in Rio Blanco County, (about 17 miles south of the Moffat county borderline, (as the crow flies). Lat/long is 39.972606/-109.04853 Area dry and exposed on a rim top on Green river formation. The thistle was growing from a subblocky, light colored (limey shale?). Bearing exposure was east. Other vegetation noted was sagebrush, rabbitbrush, juniper, and mountain mahogany. Map unit from soil conservation service is walknolls extremely channery sandy loam 4 25 % slopes. When I visited the site with Chuck Browning, the foliage was turning brown and the flowers did not have color at the time. According to Chuck, he said the flower heads were purple when he first inspected the location in late July of this year. Thanks you for help. Call me at your convenience and let me know if you need more information.

Soraya (Sy) Baroumand
Reclamation & Environmental Inspector
Colorado Oil & Gas Conservation Commission
(Office) 970-876-9910 (Cell) 970-620-3277
Email: soraya.baroumand@state.co.us
COGCC website: <http://cogcc.state.co.us>

From: Baroumand, Soraya
Sent: Tuesday, September 11, 2012 6:02 PM
To: Browning, Chuck
Subject: RE: Meagher 1-10W Site Visit 08/29/2012

Per my voice mail message, it certainly is one of the native thistles, (BLM confirmed). I also spoke with Chris Strouse regarding the recent status. I'll take care of/continue the Bond

Release statuses for Coors in vicinity, if you'd like.

The reason for all these questions is to ascertain if it is the rare Ownbey Thistle? (who knows?) BLM plant specialists are in the process of identification. I met with them last week and left them a sample. They seemed very interested, and didn't have an answer at the time. I'll inquire with them this week. Also, what were the surficial geology strata for the area? And what was the broken up surficial substrate at the site particularly at this site? (plant type generally only exists on certain rock type, and structure type.)

Soraya (Sy) Baroumand
Reclamation & Environmental Inspector
Colorado Oil & Gas Conservation Commission
(Office) 970-876-9910 (Cell) 970-620-3277
Email: soraya.baroumand@state.co.us COGCC website: <http://cogcc.state.co.us>

From: Browning, Chuck
Sent: Tuesday, September 04, 2012 7:25 AM
To: Baroumand, Soraya
Subject: RE: Meagher 1-10W Site Visit 08/29/2012

This is the only pic I took of the previous inspection. It doesn't really show the plants in detail, but I know (Lindy confirmed) that they were purple in color.

From: Browning, Chuck
Sent: Wednesday, August 29, 2012 9:27 PM
To: Baroumand, Soraya
Subject: Meagher 1-10W Site Visit 08/29/2012

Soraya,
Thanks for all your help on this, I'm relieved to know it wasn't a figment of my imagination.
Attached are the pics in PDF format. If you need any of them full size let me know.
Also...below is the email train from Chris Strouse. I'll let him know you will be contacting him. It was good to visit with you and look forward to the next time....hang in there.

Chuck Browning

NW Area Inspector
Colorado Oil & Gas Conservation Commission
Phone: 970-242-3348
Cell: 970-433-4139
Fax: 970-242-2216
www.colorado.gov/cogcc

From: Browning, Chuck [<mailto:Chuck.Browning@state.co.us>]
Sent: Tuesday, August 28, 2012 4:42 PM
To: Chris Strouse
Subject: RE: API 103-09514 Meagher 1-10W Site

Hi Chris,
I just got finished coordinating with Soraya Baroumand who is our reclamation specialist. We plan

to meet in Rangely around 10 AM tomorrow. Should make it out the pad around 11 or so.
I'll keep you posted as to what we find out. Thanks

Chuck Browning

NW Area Inspector
Colorado Oil & Gas Conservation Commission
Phone: 970-242-3348
Cell: 970-433-4139
Fax: 970-242-2216
www.colorado.gov/cogcc

From: Chris Strouse [<mailto:cstrouse@bookcliffsurvey.com>]
Sent: Tuesday, August 28, 2012 3:32 PM
To: Browning, Chuck
Subject: RE: API 103-09514 Meagher 1-10W Site

Hi Chuck,

I was wondering if you have received any additional information concerning this site yet. I did talk to Jane Stanczyk and she did confirm that updated GPS Coordinates are not needed for wells this old.

Chris

From: Browning, Chuck [<mailto:Chuck.Browning@state.co.us>]
Sent: Wednesday, August 22, 2012 4:17 PM
To: Chris Strouse
Subject: RE: API 103-09514 Meagher 1-10W Site

Chris,

Sorry for the delay.

I'm still waiting to hear back from the reclamation inspector. I'll keep you posted when we plan another trip out there.

Thanks for your quick response to the inspection form. Regards,

Chuck Browning

NW Area Inspector
Colorado Oil & Gas Conservation Commission
Phone: 970-242-3348
Cell: 970-433-4139
Fax: 970-242-2216
www.colorado.gov/cogcc

From: Chris Strouse [<mailto:cstrouse@bookcliffsurvey.com>]
Sent: Tuesday, August 21, 2012 10:46 AM
To: Browning, Chuck
Subject: API 103-09514 Meagher 1-10W Site

Chuck,

The Land owner is requesting information about the weed control that is needed at this site. He wants a plan of action and what is to be controlled and how far the weed control needs to go. He

also wants all activity on the site to be supervised by a representative designated by him. Can you please give me a call to discuss the action required by the COGCC to pass inspection at this site.

Chris Strouse
Bookcliff Survey Service, Inc
136 East Third Street
Rifle, CO 81650

Office: 970 625-3720

Email: cstrouse@bookcliffsurvey.com