

WELL LOCATION PLAT T8N, R60W, 6th P.M.

NOBLE ENERGY, INC.

Well location, SHABLE LF05-62HN, located as shown in the SW 1/4 SW 1/4 of Section 5, T8N, R60W, 6th P.M., Weld County, Colorado.

BASIS OF ELEVATION

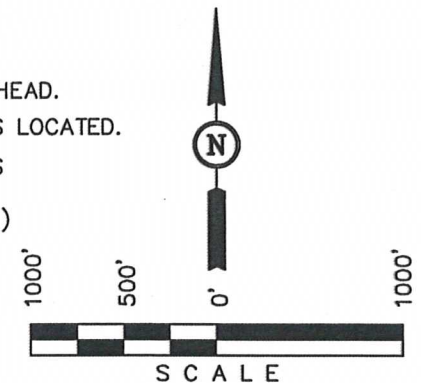
SPOT ELEVATION LOCATED AT THE NORTHEAST CORNER OF SECTION 2, T9N, R61W, 6th P.M., TAKEN FROM THE GROVER SOUTH, QUADRANGLE, COLORADO, WELD COUNTY, 7.5 MINUTE QUAD (TOPOGRAPHICAL MAP) PUBLISHED BY THE UNITED STATES DEPARTMENT OF THE INTERIOR, GEOLOGICAL SURVEY. SAID ELEVATION IS MARKED AS BEING 5043 FEET.

BASIS OF BEARINGS

BASIS OF BEARINGS IS A G.P.S. OBSERVATION.

LEGEND:

- └─ = 90° SYMBOL
- = PROPOSED WELL HEAD.
- ▲ = SECTION CORNERS LOCATED.
- △ = SECTION CORNERS RE-ESTABLISHED.
(Not Set on Ground.)



CERTIFICATE

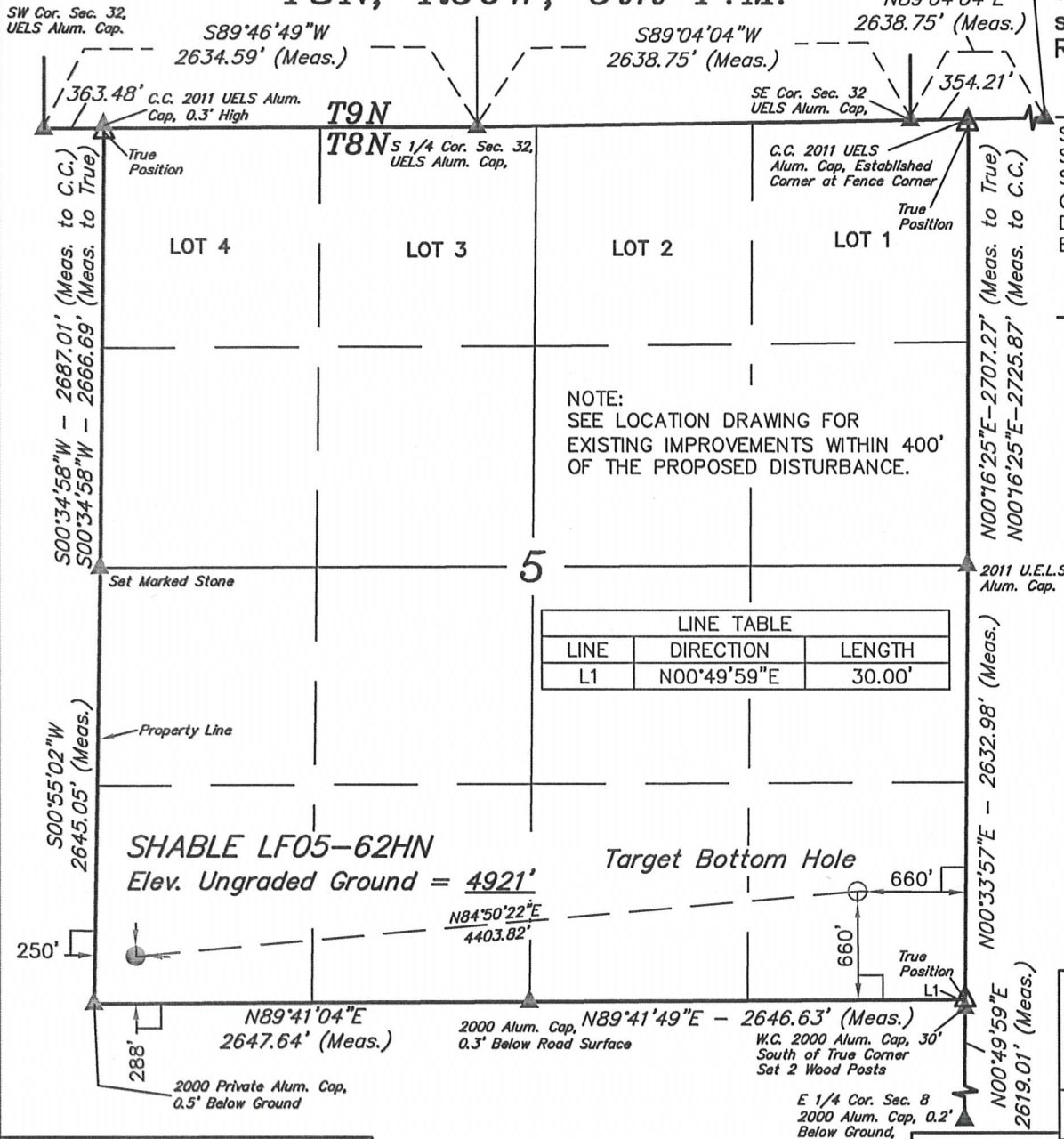
THIS IS TO CERTIFY THAT THE ABOVE PLAT WAS PREPARED FROM FIELD NOTES OF ACTUAL SURVEYS MADE BY ME OR UNDER MY SUPERVISION AND THAT THE SAME ARE TRUE AND CORRECT TO THE BEST OF MY KNOWLEDGE AND BELIEF.

REGISTERED LAND SURVEYOR
REGISTRATION NO. 17492
STATE OF COLORADO

REVISED: 08-06-12

UINTAH ENGINEERING & LAND SURVEYING
85 SOUTH 200 EAST - VERNAL, UTAH 84078
(435) 789-1017

SCALE 1" = 1000'	DATE SURVEYED: 05-30-12	DATE DRAWN: 07-30-12
PARTY LOREN SHANKS J.W.	REFERENCES G.L.O. PLAT	
WEATHER WARM	FILE	NOBLE ENERGY, INC.



FEATURE TABLE

EXISTING FEATURE	DIRECTION	LENGTH	NAD 83 (TARGET BOTTOM HOLE)	NAD 83 (SURFACE LOCATION)
PROPERTY LINE	WEST	250'	LATITUDE = 40°41'09.26" (40.685906) LONGITUDE = 104°06'27.52" (104.107644)	LATITUDE = 40°41'05.37" (40.684825) LONGITUDE = 104°07'24.44" (104.123456)

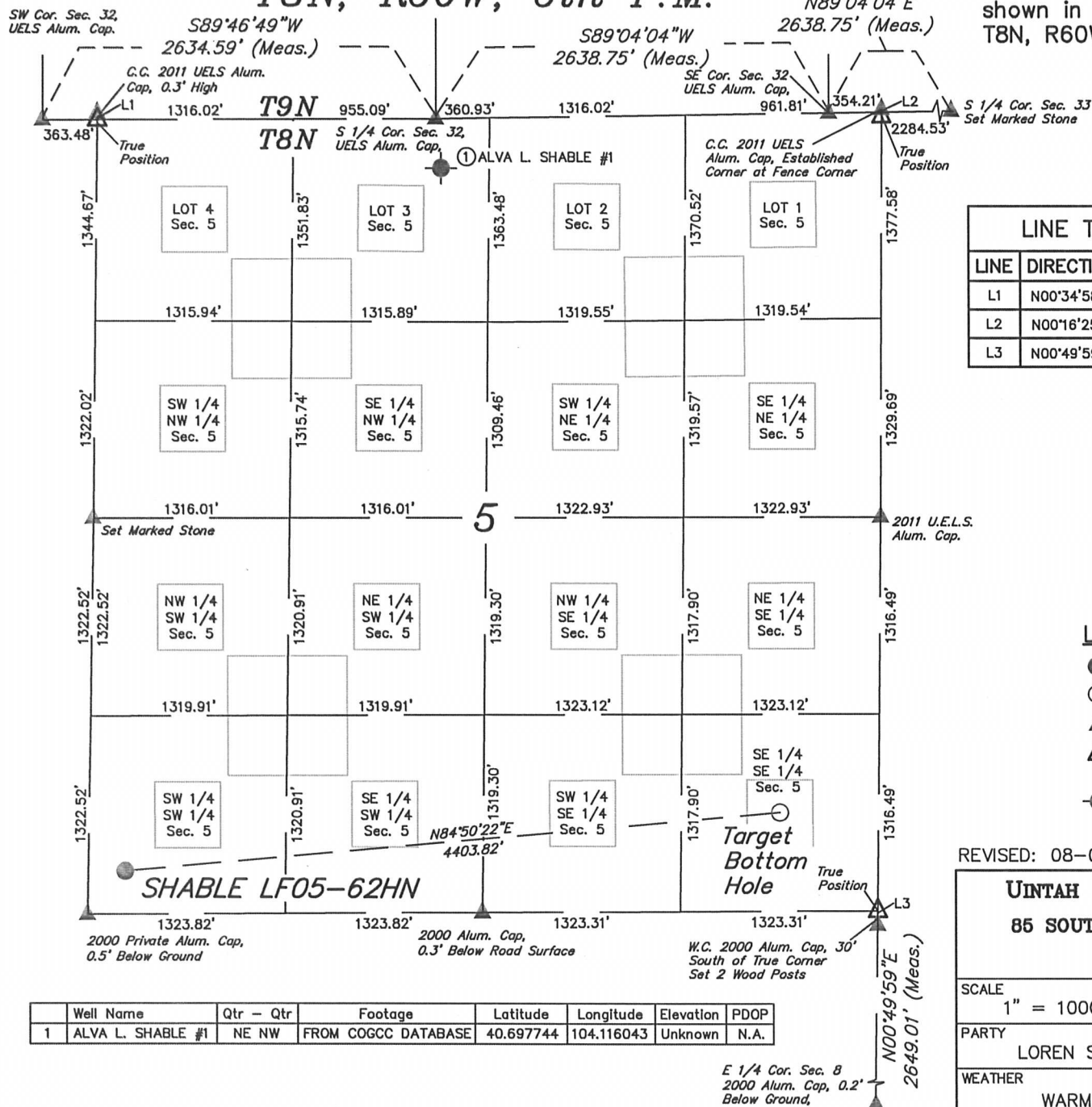
PDOP = 1.6

SITE SKETCH

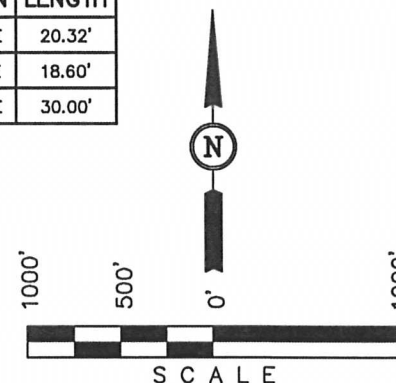
T8N, R60W, 6th P.M.

NOBLE ENERGY, INC.

Well location, SHABLE LF05-62HN, located as shown in the SW 1/4 SW 1/4 of Section 5, T8N, R60W, 6th P.M., Weld County, Colorado.



LINE TABLE		
LINE	DIRECTION	LENGTH
L1	N00°34'58"E	20.32'
L2	N00°16'25"E	18.60'
L3	N00°49'59"E	30.00'



LEGEND:

- = PROPOSED WELL HEAD.
- = PROPOSED TARGET BOTTOM HOLE
- ▲ = SECTION CORNERS LOCATED
- △ = SECTION CORNERS RE-ESTABLISHED (Not Set on Ground.)
- ⊙ = ABANDONED WELLS

REVISED: 08-06-12

UINTAH ENGINEERING & LAND SURVEYING
85 SOUTH 200 EAST - VERNAL, UTAH 84078
(435) 789-1017

SCALE 1" = 1000'	DATE SURVEYED: 02-25-11	DATE DRAWN: 07-30-12
PARTY LOREN SHANKS J.W.	REFERENCES G.L.O. PLAT	
WEATHER WARM	FILE NOBLE ENERGY, INC.	

Well Name	Qtr - Qtr	Footage	Latitude	Longitude	Elevation	PDOP
1 ALVA L. SHABLE #1	NE NW	FROM COGCC DATABASE	40.697744	104.116043	Unknown	N.A.