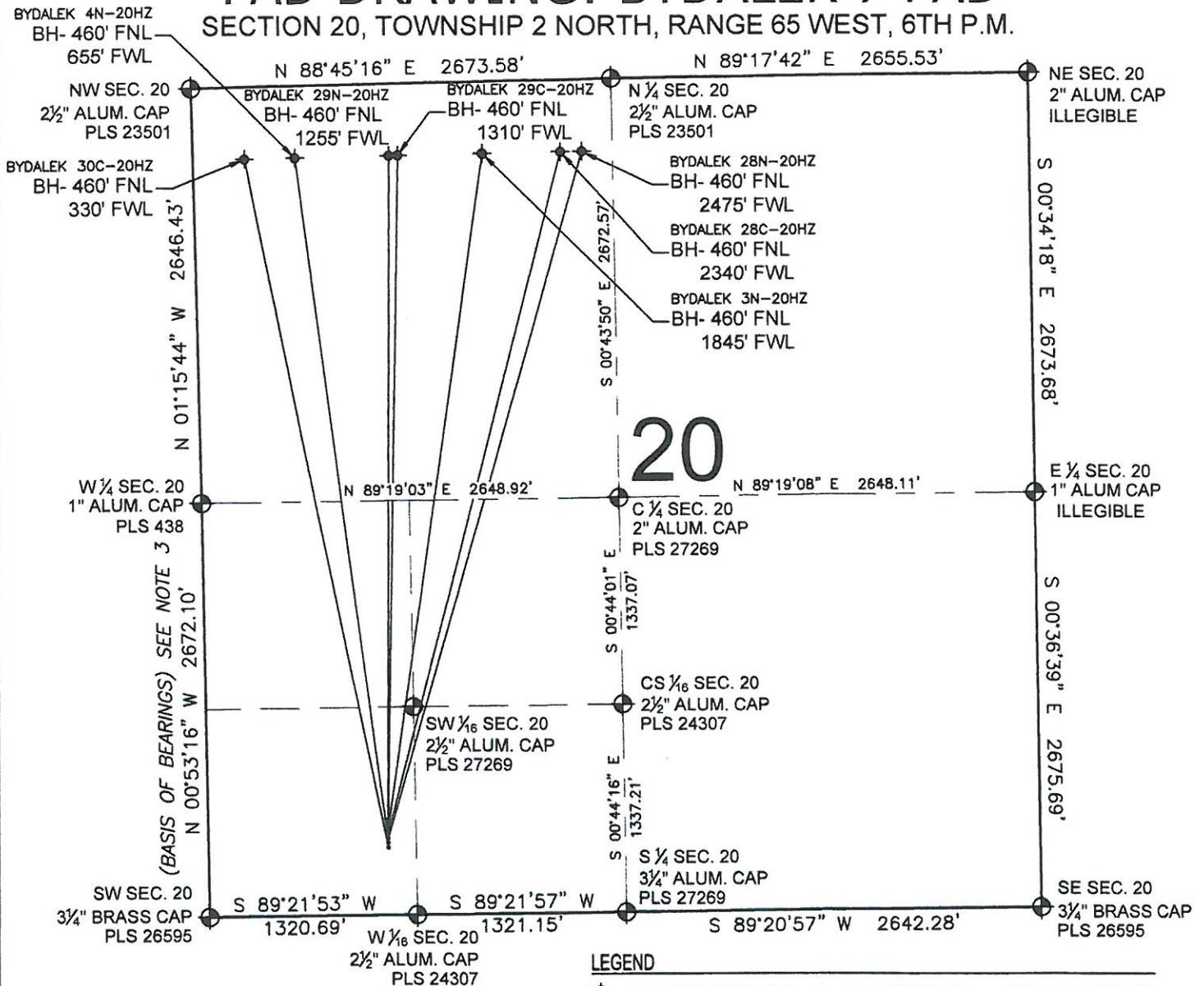


PAD DRAWING: BYDALEK 7 PAD

SECTION 20, TOWNSHIP 2 NORTH, RANGE 65 WEST, 6TH P.M.



LEGEND

- ⊕ = EXISTING MONUMENT
- ⊙ = PROPOSED WELL
- ⬮ = BOTTOM HOLE
- ⬮ = EXISTING WELL
- BH = BOTTOM HOLE

NOTES:

- THIS FIELD SURVEY CONFORMS TO THE MINIMUM STANDARDS SET BY THE C.O.G.C.C., RULE NO. 215
- HORIZONTAL POSITIONS AND ORTHOMETRIC ELEVATIONS SHOWN AT THE WELL HEAD, ARE BASED ON GPS-RTK POSITIONS DERIVED FROM MINIMUM 2-HOUR STATIC OBSERVATIONS CORRECTED BY THE NATIONAL GEODETIC SURVEY ONLINE POSITIONING USER SERVICE, O.P.U.S. DATUM: HORIZONTAL = NAD83/2007, VERTICAL = NAVD88
- THE BASIS OF BEARINGS ARE STATE PLANE COORDINATE SYSTEM GRID BEARINGS SHOWN HEREON BETWEEN THE DESCRIBED MONUMENTS SHOWN HEREON.
- GRID DISTANCES ARE SHOWN, AS MEASURED IN THE FIELD, WITH TIES TO WELLS MEASURED PERPENDICULAR TO SECTION LINES.

NOTES:

- BYDALEK 29N-20HZ TO BE AT 611' FSL, 1146' FWL. BOTTOM HOLE AT 460' FNL & 1255' FWL.
- BYDALEK 29C-20HZ TO BE AT 581' FSL, 1146' FWL. BOTTOM HOLE AT 460' FNL & 1310' FWL.
- BYDALEK 3N-20HZ TO BE AT 551' FSL, 1146' FWL. BOTTOM HOLE AT 460' FNL & 1845' FWL.
- BYDALEK 28C-20HZ TO BE AT 521' FSL, 1146' FWL. BOTTOM HOLE AT 460' FNL & 2340' FWL.
- BYDALEK 28N-20HZ TO BE AT 491' FSL, 1146' FWL. BOTTOM HOLE AT 460' FNL & 2475' FWL.
- BYDALEK 4N-20HZ TO BE AT 461' FSL, 1146' FWL. BOTTOM HOLE AT 460' FNL & 655' FWL.
- BYDALEK 30C-20HZ TO BE AT 431' FSL, 1146' FWL. BOTTOM HOLE AT 460' FNL & 330' FWL.

PREPARED BY:



KERR-MCGEE OIL & GAS ONSHORE LP

| | |
|---------------------------|--|
| FIELD DATE: 07-27-12 | PAD NAME: BYDALEK 7 PAD |
| DRAWING DATE: 08-03-12 | SURFACE LOCATION: WELD COUNTY, COLORADO |
| BY: SMF | CHECKED: JAH |
| | SW 1/4 SW 1/4, SEC.20, T2N, R65W, 6TH P.M. |

