

T3N, R68W, 6th. P.M.

Priv. Alum. Cap,
0.8' Below Ground in E
Gravel Road E-W, LS #2209
Lat: 40.248031°
Long: 104.960797°

GREAT WESTERN OIL & GAS COMPANY

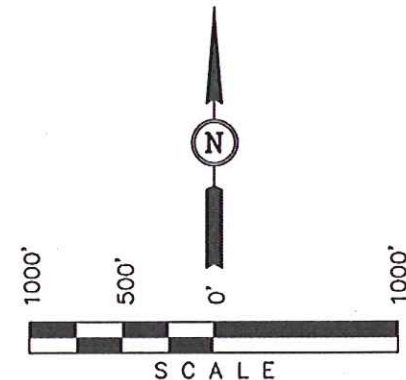
Well location, POSTLE IC #11-23D, located as shown in the SE 1/4 NE 1/4 of Section 11, T3N, R68W, 6th. P.M., Weld County, Colorado.

BASIS OF ELEVATION

USGS COOPERATIVE BASE NETWORK CONTROL STATION, DESIGNATION 'VERMILYEA'. NGS DATA SHEET LISTS THE NAVD 88 ELEVATION AS BEING 5026 FEET.

BASIS OF BEARINGS

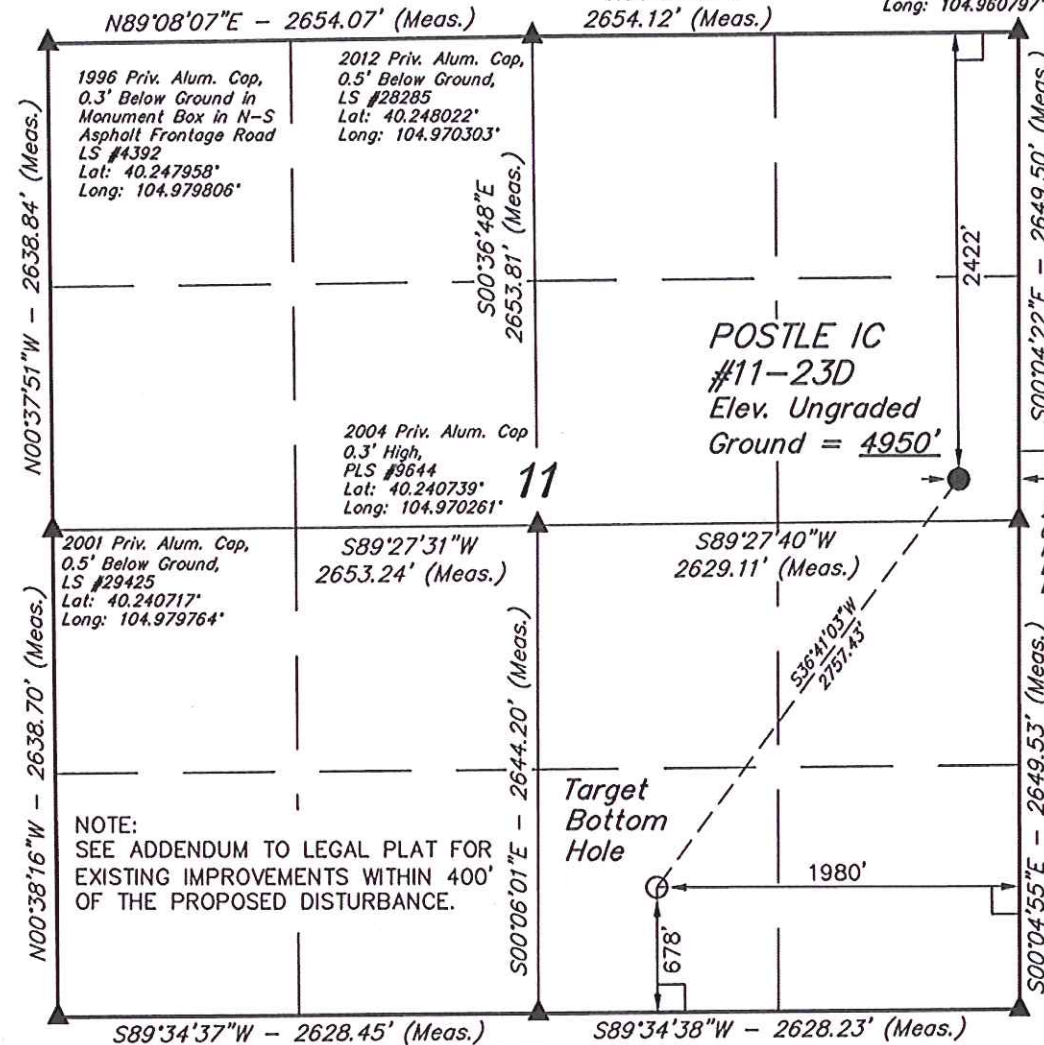
BASIS OF BEARINGS IS A G.P.S. OBSERVATION.



CERTIFICATE

THIS IS TO CERTIFY THAT THE ABOVE PLAT WAS PREPARED FROM FIELD NOTES OF ACTUAL SURVEYS MADE BY ME OR UNDER MY SUPERVISION AND THAT THE SAME ARE TRUE AND CORRECT TO THE BEST OF MY KNOWLEDGE AND BELIEF.

REGISTERED LAND SURVEYOR
REGISTRATION NO. 17492
STATE OF COLORADO
09-10-12



NOTE:
SEE ADDENDUM TO LEGAL PLAT FOR
EXISTING IMPROVEMENTS WITHIN 400'
OF THE PROPOSED DISTURBANCE.

2005 Priv. Alum. Cap
0.5' Below Ground, in
Monument Box at E
of Asphalt Road,
LS #22098
Lat: 40.233475°
Long: 104.979719°

2004 Priv. Alum. Cap
0.5' Below Ground,
7' North of E-W E
Asphalt Road,
LS #27269
Lat: 40.233483°
Long: 104.970308°

1995 Priv. Alum. Cap
1.2' Below Ground in E
of E-W Asphalt Road
LS #22098
Lat: 40.233489°
Long: 104.960897°

LEGEND:

- └─ = 90° SYMBOL
- = PROPOSED WELL HEAD.
- ▲ = SECTION CORNERS LOCATED.

PDOP = 1.1

NAD 83 (TARGET BOTTOM HOLE)	NAD 83 (SURFACE LOCATION)
LATITUDE = 40°14'07.24" (40.235344)	LATITUDE = 40°14'28.98" (40.241383)
LONGITUDE = 104°58'04.71" (104.967975)	LONGITUDE = 104°57'43.28" (104.962022)
NAD 27 (TARGET BOTTOM HOLE)	NAD 27 (SURFACE LOCATION)
LATITUDE = 40°14'07.30" (40.235361)	LATITUDE = 40°14'29.04" (40.241400)
LONGITUDE = 104°58'02.79" (104.967442)	LONGITUDE = 104°57'41.36" (104.961489)

UINTAH ENGINEERING & LAND SURVEYING

85 SOUTH 200 EAST - VERNAL, UTAH 84078

(435) 789-1017

SCALE 1" = 1000'	DATE SURVEYED: 08-24-12	DATE DRAWN: 08-31-12
PARTY J.H. C.M. H.K.W.	REFERENCES G.L.O. PLAT	
WEATHER HOT	FILE GREAT WESTERN OIL & GAS COMPANY	