

KERR-MCGEE OIL & GAS ONSHORE LP

Location: COLORADO Slot: SLOT#05 GITTLEIN 29C-28HZ (175'FSL & 2037'FWL, SEC.33)
Field: WELD COUNTY (KERR MCGEE) Well: GITTLEIN 29C-28HZ
Facility: SEC.33-T2N-R65W Wellbore: GITTLEIN 29C-28HZ PWB

Plot reference wellpath is GITTLEIN 29C-28HZ (PERMIT) PWP

True vertical depths are referenced to Rig on SLOTH05 GITTLEIN 29C-28HZ (175'FSL & 2037'FWL, SEC.33) (RKB)	Grid System: NAD83 / Lambert Colorado SP, Northern Zone (501), US feet
Measured depths are referenced to Rig on SLOTH05 GITTLEIN 29C-28HZ (175'FSL & 2037'FWL, SEC.33) (RKB)	North Reference: True north
Rig on SLOTH05 GITTLEIN 29C-28HZ (175'FSL & 2037'FWL, SEC.33) (RKB) to Mean Sea Level: 4929 feet	Scale: True distance
Mean Sea Level to Mud line (At Slot: SLOTH05 GITTLEIN 29C-28HZ (175'FSL & 2037'FWL, SEC.33)): 0 feet	Depths are in feet
Coordinates are in feet referenced to Slot	Created by: wilsje02 on 8/20/2012

Location Information

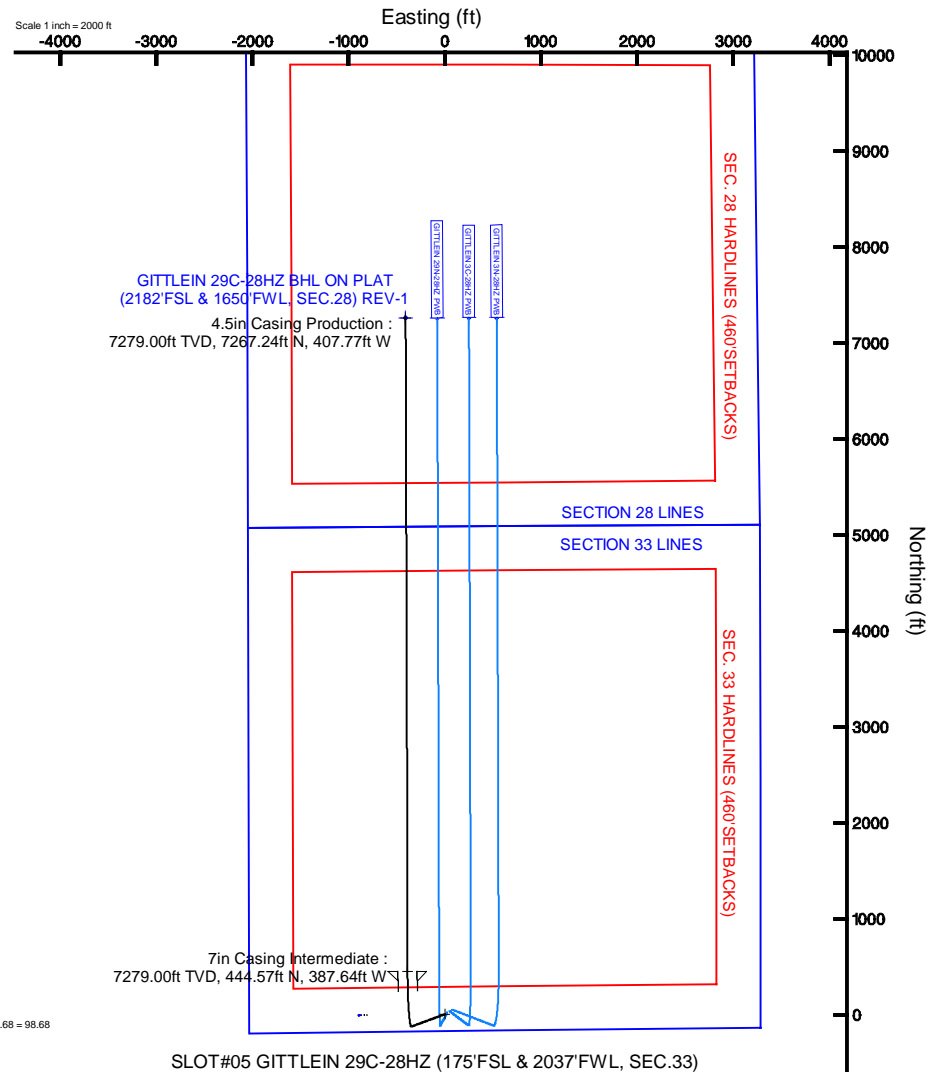
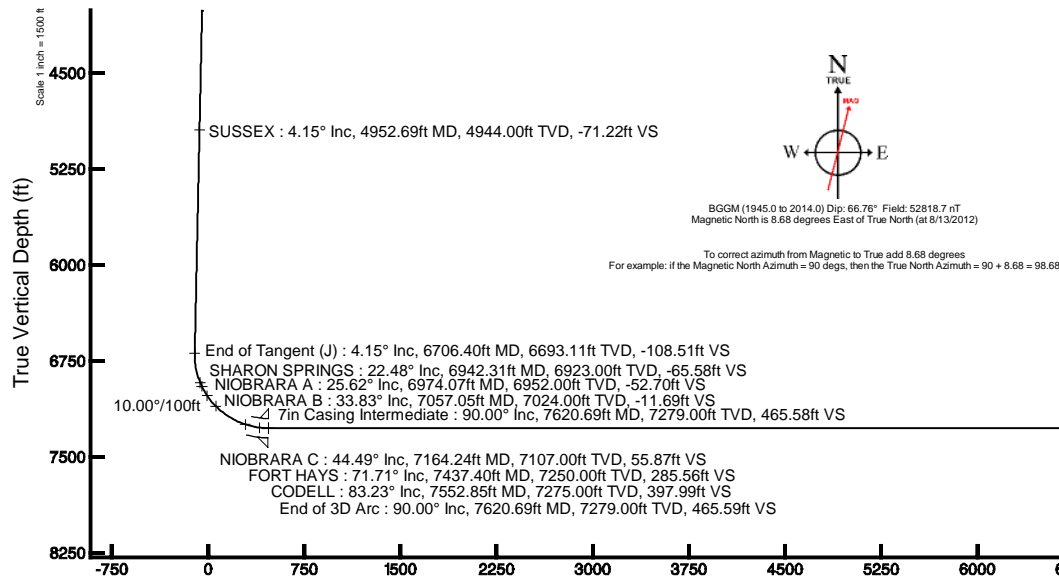
Facility Name	Grid East (US ft)	Grid North (US ft)	Latitude	Longitude
SEC.33-T2N-R65W	3231045.236	1276079.076	40°05'17.790"N	104°40'27.156"W
Site	Local N (ft)	Local E (ft)	Grid East (US ft)	Grid North (US ft)
SLOTH05 GITTLEIN 29C-28HZ (175'FSL & 2037'FWL, SEC.33)	10.95	899.25	3231944.311	1276098.394
Rig on SLOTH05 GITTLEIN 29C-28HZ (175'FSL & 2037'FWL, SEC.33) (RKB) to Mud line (At Slot: SLOTH05 GITTLEIN 29C-28HZ (175'FSL & 2037'FWL, SEC.33))				4929ft
Mean Sea Level to Mud line (At Slot: SLOTH05 GITTLEIN 29C-28HZ (175'FSL & 2037'FWL, SEC.33))				0ft
Rig on SLOTH05 GITTLEIN 29C-28HZ (175'FSL & 2037'FWL, SEC.33) (RKB) to Mean Sea Level				4929ft

Well Profile Data

Design Comment	MD (ft)	Inc (°)	Az (°)	TVD (ft)	Local N (ft)	Local E (ft)	DLS (°/100ft)	VS (ft)
Tie On	17.00	0.000	249.700	17.00	0.00	0.00	0.00	0.00
End of Tangent	1500.00	0.000	249.700	1500.00	0.00	0.00	0.00	0.00
End of Build (J)	1707.50	4.150	249.700	1707.32	-2.61	-7.04	2.00	-2.21
End of Tangent (J)	6706.40	4.150	249.700	6693.11	-128.11	-346.34	0.00	-108.51
End of 3D Arc	7620.69	90.000	359.860	7279.00	444.57	-387.64	10.00	465.59
End of 3D Arc	14443.40	90.000	359.802	7279.00	7267.24	-407.77	0.00	7278.67

Targets

Name	MD (ft)	TVD (ft)	Local N (ft)	Local E (ft)	Grid East (US ft)	Grid North (US ft)	Latitude	Longitude
GITTLEIN 4 PAD SECTION 28 LINES		-5.00	-10.91	-899.25	3231045.24	1276079.08	40°05'17.790"N	104°40'27.156"W
GITTLEIN 4 PAD SECTION 33 LINES		-5.00	-10.91	-899.25	3231045.24	1276079.08	40°05'17.790"N	104°40'27.156"W
GITTLEIN 29C-28HZ BHL ON PLAT (2182'FSL & 1650'FWL, SEC.28) REV-1	14443.40	7279.00	7267.24	-407.77	3231468.64	1283361.21	40°06'29.714"N	104°40'20.834"W
GITTLEIN 4 PAD SEC. 28 HARDLINES (460 SETBACKS)		7295.00	-10.91	-899.25	3231045.24	1276079.08	40°05'17.790"N	104°40'27.156"W
GITTLEIN 4 PAD SEC. 33 HARDLINES (460 SETBACKS)		7295.00	-10.91	-899.25	3231045.24	1276079.08	40°05'17.790"N	104°40'27.156"W





Planned Wellpath Report
GITTLEIN 29C-28HZ (PERMIT) PWP
Page 1 of 7



REFERENCE WELLPATH IDENTIFICATION			
Operator	KERR-MCGEE OIL & GAS ONSHORE LP	Slot	SLOT#05 GITTLEIN 29C-28HZ (175'FSL & 2037'FWL, SEC.33)
Area	COLORADO	Well	GITTLEIN 29C-28HZ
Field	WELD COUNTY (KERR MCGEE)	Wellbore	GITTLEIN 29C-28HZ PWB
Facility	SEC.33-T2N-R65W		

REPORT SETUP INFORMATION			
Projection System	NAD83 / Lambert Colorado SP, Northern Zone (501), US feet	Software System	WellArchitect® 3.0.2
North Reference	True	User	Wilsjef02
Scale	0.999961	Report Generated	8/20/2012 at 09:42:39
Convergence at slot	0.54° East	Database/Source file	WellArchitectDB/GITTLEIN_29C-28HZ_PWB.xml

WELLPATH LOCATION						
	Local coordinates		Grid coordinates		Geographic coordinates	
	North[ft]	East[ft]	Easting[US ft]	Northing[US ft]	Latitude	Longitude
Slot Location	10.95	899.25	3231944.31	1276098.39	40°05'17.898"N	104°40'15.586"W
Facility Reference Pt			3231045.24	1276079.08	40°05'17.790"N	104°40'27.156"W
Field Reference Pt			3197771.84	1268891.29	40°04'09.600"N	104°47'36.000"W

WELLPATH DATUM	
Calculation method	Minimum curvature Rig on SLOT#05 GITTLEIN 29C-28HZ (175'FSL & 2037'FWL, SEC.33) (RKB) to Facility Vertical Datum
Horizontal Reference Pt	Slot Rig on SLOT#05 GITTLEIN 29C-28HZ (175'FSL & 2037'FWL, SEC.33) (RKB) to Mean Sea Level
Vertical Reference Pt	Rig on SLOT#05 GITTLEIN 29C-28HZ (175'FSL & 2037'FWL, SEC.33) (RKB) Rig on SLOT#05 GITTLEIN 29C-28HZ (175'FSL & 2037'FWL, SEC.33) (RKB) to Mud Line at Slot (SLOT#05 GITTLEIN 2
MD Reference Pt	Rig on SLOT#05 GITTLEIN 29C-28HZ (175'FSL & 2037'FWL, SEC.33) (RKB) Section Origin
Field Vertical Reference	Mean Sea Level Section Azimuth



Planned Wellpath Report

GITTLEIN 29C-28HZ (PERMIT) PWP

Page 2 of 7



REFERENCE WELLPATH IDENTIFICATION

Operator	KERR-MCGEE OIL & GAS ONSHORE LP	Slot	SLOT#05 GITTLEIN 29C-28HZ (175'FSL & 2037'FWL, SEC.33)
Area	COLORADO	Well	GITTLEIN 29C-28HZ
Field	WELD COUNTY (KERR MCGEE)	Wellbore	GITTLEIN 29C-28HZ PWB
Facility	SEC.33-T2N-R6SW		

WELLPATH DATA (159 stations) † = interpolated/extrapolated station

MD [ft]	Inclination [°]	Azimuth [°]	TVD [ft]	Vert Sect [ft]	North [ft]	East [ft]	Latitude	Longitude	DLS [°/100ft]	Comments
0.00†	0.000	249.700	0.00	0.00	0.00	0.00	40°05'17.898"N	104°40'15.586"W	0.00	
17.00	0.000	249.700	17.00	0.00	0.00	0.00	40°05'17.898"N	104°40'15.586"W	0.00	Tie On
117.00†	0.000	249.700	117.00	0.00	0.00	0.00	40°05'17.898"N	104°40'15.586"W	0.00	
217.00†	0.000	249.700	217.00	0.00	0.00	0.00	40°05'17.898"N	104°40'15.586"W	0.00	
317.00†	0.000	249.700	317.00	0.00	0.00	0.00	40°05'17.898"N	104°40'15.586"W	0.00	
417.00†	0.000	249.700	417.00	0.00	0.00	0.00	40°05'17.898"N	104°40'15.586"W	0.00	
517.00†	0.000	249.700	517.00	0.00	0.00	0.00	40°05'17.898"N	104°40'15.586"W	0.00	
617.00†	0.000	249.700	617.00	0.00	0.00	0.00	40°05'17.898"N	104°40'15.586"W	0.00	
717.00†	0.000	249.700	717.00	0.00	0.00	0.00	40°05'17.898"N	104°40'15.586"W	0.00	
751.00†	0.000	249.700	751.00	0.00	0.00	0.00	40°05'17.898"N	104°40'15.586"W	0.00	FOX HILLS
817.00†	0.000	249.700	817.00	0.00	0.00	0.00	40°05'17.898"N	104°40'15.586"W	0.00	
917.00†	0.000	249.700	917.00	0.00	0.00	0.00	40°05'17.898"N	104°40'15.586"W	0.00	
1017.00†	0.000	249.700	1017.00	0.00	0.00	0.00	40°05'17.898"N	104°40'15.586"W	0.00	
1117.00†	0.000	249.700	1117.00	0.00	0.00	0.00	40°05'17.898"N	104°40'15.586"W	0.00	
1217.00†	0.000	249.700	1217.00	0.00	0.00	0.00	40°05'17.898"N	104°40'15.586"W	0.00	
1317.00†	0.000	249.700	1317.00	0.00	0.00	0.00	40°05'17.898"N	104°40'15.586"W	0.00	
1417.00†	0.000	249.700	1417.00	0.00	0.00	0.00	40°05'17.898"N	104°40'15.586"W	0.00	
1500.00	0.000	249.700	1500.00	0.00	0.00	0.00	40°05'17.898"N	104°40'15.586"W	0.00	End of Tangent
1517.00†	0.340	249.700	1517.00	-0.01	-0.02	-0.05	40°05'17.898"N	104°40'15.587"W	2.00	
1617.00†	2.340	249.700	1616.97	-0.70	-0.83	-2.24	40°05'17.890"N	104°40'15.615"W	2.00	
1707.50	4.150	249.700	1707.32	-2.21	-2.61	-7.04	40°05'17.872"N	104°40'15.677"W	2.00	End of Build (J)
1717.00†	4.150	249.700	1716.79	-2.41	-2.84	-7.69	40°05'17.870"N	104°40'15.685"W	0.00	
1817.00†	4.150	249.700	1816.53	-4.54	-5.36	-14.48	40°05'17.845"N	104°40'15.772"W	0.00	
1917.00†	4.150	249.700	1916.27	-6.66	-7.87	-21.26	40°05'17.820"N	104°40'15.860"W	0.00	
2017.00†	4.150	249.700	2016.01	-8.79	-10.38	-28.05	40°05'17.795"N	104°40'15.947"W	0.00	
2117.00†	4.150	249.700	2115.74	-10.92	-12.89	-34.84	40°05'17.771"N	104°40'16.034"W	0.00	
2217.00†	4.150	249.700	2215.48	-13.04	-15.40	-41.63	40°05'17.746"N	104°40'16.122"W	0.00	
2317.00†	4.150	249.700	2315.22	-15.17	-17.91	-48.41	40°05'17.721"N	104°40'16.209"W	0.00	
2417.00†	4.150	249.700	2414.96	-17.29	-20.42	-55.20	40°05'17.696"N	104°40'16.296"W	0.00	
2517.00†	4.150	249.700	2514.70	-19.42	-22.93	-61.99	40°05'17.671"N	104°40'16.384"W	0.00	
2617.00†	4.150	249.700	2614.43	-21.55	-25.44	-68.78	40°05'17.647"N	104°40'16.471"W	0.00	
2717.00†	4.150	249.700	2714.17	-23.67	-27.95	-75.56	40°05'17.622"N	104°40'16.558"W	0.00	
2817.00†	4.150	249.700	2813.91	-25.80	-30.46	-82.35	40°05'17.597"N	104°40'16.646"W	0.00	
2917.00†	4.150	249.700	2913.65	-27.93	-32.97	-89.14	40°05'17.572"N	104°40'16.733"W	0.00	
3017.00†	4.150	249.700	3013.39	-30.05	-35.48	-95.92	40°05'17.547"N	104°40'16.820"W	0.00	
3117.00†	4.150	249.700	3113.12	-32.18	-37.99	-102.71	40°05'17.523"N	104°40'16.908"W	0.00	
3217.00†	4.150	249.700	3212.86	-34.31	-40.50	-109.50	40°05'17.498"N	104°40'16.995"W	0.00	
3317.00†	4.150	249.700	3312.60	-36.43	-43.02	-116.29	40°05'17.473"N	104°40'17.082"W	0.00	
3417.00†	4.150	249.700	3412.34	-38.56	-45.53	-123.07	40°05'17.448"N	104°40'17.169"W	0.00	
3517.00†	4.150	249.700	3512.07	-40.69	-48.04	-129.86	40°05'17.423"N	104°40'17.257"W	0.00	
3617.00†	4.150	249.700	3611.81	-42.81	-50.55	-136.65	40°05'17.398"N	104°40'17.344"W	0.00	
3717.00†	4.150	249.700	3711.55	-44.94	-53.06	-143.44	40°05'17.374"N	104°40'17.431"W	0.00	
3817.00†	4.150	249.700	3811.29	-47.07	-55.57	-150.22	40°05'17.349"N	104°40'17.519"W	0.00	
3917.00†	4.150	249.700	3911.03	-49.19	-58.08	-157.01	40°05'17.324"N	104°40'17.606"W	0.00	
4017.00†	4.150	249.700	4010.76	-51.32	-60.59	-163.80	40°05'17.299"N	104°40'17.693"W	0.00	



Planned Wellpath Report

GITTLEIN 29C-28HZ (PERMIT) PWP

Page 3 of 7



REFERENCE WELLPATH IDENTIFICATION

Operator	KERR-MCGEE OIL & GAS ONSHORE LP	Slot	SLOT#05 GITTLEIN 29C-28HZ (175'FSL & 2037'FWL, SEC.33)
Area	COLORADO	Well	GITTLEIN 29C-28HZ
Field	WELD COUNTY (KERR MCGEE)	Wellbore	GITTLEIN 29C-28HZ PWB
Facility	SEC.33-T2N-R6SW		

WELLPATH DATA (159 stations) † = interpolated/extrapolated station

MD [ft]	Inclination [°]	Azimuth [°]	TVD [ft]	Vert Sect [ft]	North [ft]	East [ft]	Latitude	Longitude	DLS [°/100ft]	Comments
4117.00†	4.150	249.700	4110.50	-53.45	-63.10	-170.58	40°05'17.274"N	104°40'17.781"W	0.00	
4217.00†	4.150	249.700	4210.24	-55.57	-65.61	-177.37	40°05'17.250"N	104°40'17.868"W	0.00	
4317.00†	4.150	249.700	4309.98	-57.70	-68.12	-184.16	40°05'17.225"N	104°40'17.955"W	0.00	
4417.00†	4.150	249.700	4409.71	-59.83	-70.63	-190.95	40°05'17.200"N	104°40'18.043"W	0.00	
4517.00†	4.150	249.700	4509.45	-61.95	-73.14	-197.73	40°05'17.175"N	104°40'18.130"W	0.00	
4617.00†	4.150	249.700	4609.19	-64.08	-75.65	-204.52	40°05'17.150"N	104°40'18.217"W	0.00	
4717.00†	4.150	249.700	4708.93	-66.20	-78.17	-211.31	40°05'17.126"N	104°40'18.305"W	0.00	
4817.00†	4.150	249.700	4808.67	-68.33	-80.68	-218.10	40°05'17.101"N	104°40'18.392"W	0.00	
4917.00†	4.150	249.700	4908.40	-70.46	-83.19	-224.88	40°05'17.076"N	104°40'18.479"W	0.00	
4952.69†	4.150	249.700	4944.00	-71.22	-84.08	-227.31	40°05'17.067"N	104°40'18.511"W	0.00	SUSSEX
5017.00†	4.150	249.700	5008.14	-72.58	-85.70	-231.67	40°05'17.051"N	104°40'18.567"W	0.00	
5117.00†	4.150	249.700	5107.88	-74.71	-88.21	-238.46	40°05'17.026"N	104°40'18.654"W	0.00	
5217.00†	4.150	249.700	5207.62	-76.84	-90.72	-245.25	40°05'17.001"N	104°40'18.741"W	0.00	
5317.00†	4.150	249.700	5307.35	-78.96	-93.23	-252.03	40°05'16.977"N	104°40'18.829"W	0.00	
5417.00†	4.150	249.700	5407.09	-81.09	-95.74	-258.82	40°05'16.952"N	104°40'18.916"W	0.00	
5517.00†	4.150	249.700	5506.83	-83.22	-98.25	-265.61	40°05'16.927"N	104°40'19.003"W	0.00	
5617.00†	4.150	249.700	5606.57	-85.34	-100.76	-272.39	40°05'16.902"N	104°40'19.091"W	0.00	
5717.00†	4.150	249.700	5706.31	-87.47	-103.27	-279.18	40°05'16.877"N	104°40'19.178"W	0.00	
5817.00†	4.150	249.700	5806.04	-89.60	-105.78	-285.97	40°05'16.853"N	104°40'19.265"W	0.00	
5917.00†	4.150	249.700	5905.78	-91.72	-108.29	-292.76	40°05'16.828"N	104°40'19.353"W	0.00	
6017.00†	4.150	249.700	6005.52	-93.85	-110.80	-299.54	40°05'16.803"N	104°40'19.440"W	0.00	
6117.00†	4.150	249.700	6105.26	-95.98	-113.32	-306.33	40°05'16.778"N	104°40'19.527"W	0.00	
6217.00†	4.150	249.700	6204.99	-98.10	-115.83	-313.12	40°05'16.753"N	104°40'19.615"W	0.00	
6317.00†	4.150	249.700	6304.73	-100.23	-118.34	-319.91	40°05'16.729"N	104°40'19.702"W	0.00	
6417.00†	4.150	249.700	6404.47	-102.36	-120.85	-326.69	40°05'16.704"N	104°40'19.789"W	0.00	
6517.00†	4.150	249.700	6504.21	-104.48	-123.36	-333.48	40°05'16.679"N	104°40'19.877"W	0.00	
6617.00†	4.150	249.700	6603.95	-106.61	-125.87	-340.27	40°05'16.654"N	104°40'19.964"W	0.00	
6706.40	4.150	249.700	6693.11	-108.51	-128.11	-346.34	40°05'16.632"N	104°40'20.042"W	0.00	End of Tangent (J)
6717.00†	3.914	264.444	6703.69	-108.64	-128.28	-347.06	40°05'16.630"N	104°40'20.051"W	10.00	
6817.00†	10.382	338.036	6803.00	-100.22	-120.23	-353.84	40°05'16.710"N	104°40'20.139"W	10.00	
6917.00†	19.999	349.073	6899.41	-74.68	-95.02	-360.47	40°05'16.959"N	104°40'20.224"W	10.00	
6942.31†	22.485	350.388	6923.00	-65.58	-86.00	-362.10	40°05'17.048"N	104°40'20.245"W	10.00	SHARON SPRINGS
6974.07†	25.616	351.693	6952.00	-52.70	-73.22	-364.10	40°05'17.174"N	104°40'20.271"W	10.00	NIOBRARA A
7017.00†	29.863	353.047	6989.99	-32.79	-53.41	-366.74	40°05'17.370"N	104°40'20.305"W	10.00	
7057.05†	33.834	354.028	7024.00	-11.69	-32.42	-369.11	40°05'17.578"N	104°40'20.335"W	10.00	NIOBRARA B
7117.00†	39.790	355.169	7071.98	24.19	3.33	-372.46	40°05'17.931"N	104°40'20.378"W	10.00	
7164.24†	44.490	355.884	7107.00	55.87	34.92	-374.92	40°05'18.243"N	104°40'20.410"W	10.00	NIOBRARA C
7217.00†	49.743	356.554	7142.89	94.51	73.48	-377.46	40°05'18.624"N	104°40'20.443"W	10.00	
7317.00†	59.708	357.580	7200.57	176.05	154.91	-381.59	40°05'19.429"N	104°40'20.496"W	10.00	
7417.00†	69.680	358.415	7243.26	266.31	245.15	-384.72	40°05'20.321"N	104°40'20.536"W	10.00	
7437.40†	71.715	358.570	7250.00	285.56	264.39	-385.23	40°05'20.511"N	104°40'20.542"W	10.00	FORT HAYS
7517.00†	79.655	359.148	7269.67	362.57	341.44	-386.75	40°05'21.272"N	104°40'20.562"W	10.00	
7552.85†	83.232	359.397	7275.00	397.99	376.89	-387.20	40°05'21.622"N	104°40'20.568"W	10.00	CODELL
7617.00†	89.632	359.835	7278.99	461.90	440.88	-387.63	40°05'22.255"N	104°40'20.573"W	10.00	
7620.69	90.000	359.860	7279.00	465.59	444.57	-387.64	40°05'22.291"N	104°40'20.574"W	10.00	End of 3D Arc



Planned Wellpath Report

GITTLEIN 29C-28HZ (PERMIT) PWP

Page 4 of 7



REFERENCE WELLPATH IDENTIFICATION

Operator	KERR-MCGEE OIL & GAS ONSHORE LP	Slot	SLOT#05 GITTLEIN 29C-28HZ (175'FSL & 2037'FWL, SEC.33)
Area	COLORADO	Well	GITTLEIN 29C-28HZ
Field	WELD COUNTY (KERR MCGEE)	Wellbore	GITTLEIN 29C-28HZ PWB
Facility	SEC.33-T2N-R65W		

WELLPATH DATA (159 stations) † = interpolated/extrapolated station

MD [ft]	Inclination [°]	Azimuth [°]	TVD [ft]	Vert Sect [ft]	North [ft]	East [ft]	Latitude	Longitude	DLS [°/100ft]	Comments
7717.00†	90.000	359.859	7279.00	561.76	540.88	-387.88	40°05'23.243"N	104°40'20.577"W	0.00	
7817.00†	90.000	359.858	7279.00	661.61	640.87	-388.12	40°05'24.231"N	104°40'20.580"W	0.00	
7917.00†	90.000	359.857	7279.00	761.47	740.87	-388.37	40°05'25.219"N	104°40'20.583"W	0.00	
8017.00†	90.000	359.857	7279.00	861.33	840.87	-388.62	40°05'26.208"N	104°40'20.586"W	0.00	
8117.00†	90.000	359.856	7279.00	961.18	940.87	-388.87	40°05'27.196"N	104°40'20.590"W	0.00	
8217.00†	90.000	359.855	7279.00	1061.04	1040.87	-389.12	40°05'28.184"N	104°40'20.593"W	0.00	
8317.00†	90.000	359.854	7279.00	1160.90	1140.87	-389.38	40°05'29.172"N	104°40'20.596"W	0.00	
8417.00†	90.000	359.853	7279.00	1260.75	1240.87	-389.63	40°05'30.160"N	104°40'20.599"W	0.00	
8517.00†	90.000	359.852	7279.00	1360.61	1340.87	-389.89	40°05'31.149"N	104°40'20.603"W	0.00	
8617.00†	90.000	359.852	7279.00	1460.47	1440.87	-390.15	40°05'32.137"N	104°40'20.606"W	0.00	
8717.00†	90.000	359.851	7279.00	1560.32	1540.87	-390.41	40°05'33.125"N	104°40'20.609"W	0.00	
8817.00†	90.000	359.850	7279.00	1660.18	1640.87	-390.67	40°05'34.113"N	104°40'20.613"W	0.00	
8917.00†	90.000	359.849	7279.00	1760.04	1740.87	-390.93	40°05'35.102"N	104°40'20.616"W	0.00	
9017.00†	90.000	359.848	7279.00	1859.90	1840.87	-391.20	40°05'36.090"N	104°40'20.620"W	0.00	
9117.00†	90.000	359.847	7279.00	1959.75	1940.87	-391.46	40°05'37.078"N	104°40'20.623"W	0.00	
9217.00†	90.000	359.846	7279.00	2059.61	2040.87	-391.73	40°05'38.066"N	104°40'20.627"W	0.00	
9317.00†	90.000	359.846	7279.00	2159.47	2140.87	-392.00	40°05'39.054"N	104°40'20.630"W	0.00	
9417.00†	90.000	359.845	7279.00	2259.33	2240.87	-392.27	40°05'40.043"N	104°40'20.633"W	0.00	
9517.00†	90.000	359.844	7279.00	2359.18	2340.87	-392.54	40°05'41.031"N	104°40'20.637"W	0.00	
9617.00†	90.000	359.843	7279.00	2459.04	2440.87	-392.82	40°05'42.019"N	104°40'20.641"W	0.00	
9717.00†	90.000	359.842	7279.00	2558.90	2540.87	-393.09	40°05'43.007"N	104°40'20.644"W	0.00	
9817.00†	90.000	359.841	7279.00	2658.76	2640.87	-393.37	40°05'43.995"N	104°40'20.648"W	0.00	
9917.00†	90.000	359.840	7279.00	2758.62	2740.87	-393.64	40°05'44.984"N	104°40'20.651"W	0.00	
10017.00†	90.000	359.840	7279.00	2858.47	2840.87	-393.92	40°05'45.972"N	104°40'20.655"W	0.00	
10117.00†	90.000	359.839	7279.00	2958.33	2940.87	-394.20	40°05'46.960"N	104°40'20.659"W	0.00	
10217.00†	90.000	359.838	7279.00	3058.19	3040.87	-394.49	40°05'47.948"N	104°40'20.662"W	0.00	
10317.00†	90.000	359.837	7279.00	3158.05	3140.87	-394.77	40°05'48.937"N	104°40'20.666"W	0.00	
10417.00†	90.000	359.836	7279.00	3257.91	3240.87	-395.05	40°05'49.925"N	104°40'20.670"W	0.00	
10517.00†	90.000	359.835	7279.00	3357.77	3340.87	-395.34	40°05'50.913"N	104°40'20.673"W	0.00	
10617.00†	90.000	359.834	7279.00	3457.63	3440.86	-395.63	40°05'51.901"N	104°40'20.677"W	0.00	
10717.00†	90.000	359.834	7279.00	3557.48	3540.86	-395.92	40°05'52.889"N	104°40'20.681"W	0.00	
10817.00†	90.000	359.833	7279.00	3657.34	3640.86	-396.21	40°05'53.878"N	104°40'20.684"W	0.00	
10917.00†	90.000	359.832	7279.00	3757.20	3740.86	-396.50	40°05'54.866"N	104°40'20.688"W	0.00	
11017.00†	90.000	359.831	7279.00	3857.06	3840.86	-396.80	40°05'55.854"N	104°40'20.692"W	0.00	
11117.00†	90.000	359.830	7279.00	3956.92	3940.86	-397.09	40°05'56.842"N	104°40'20.696"W	0.00	
11217.00†	90.000	359.829	7279.00	4056.78	4040.86	-397.39	40°05'57.830"N	104°40'20.700"W	0.00	
11317.00†	90.000	359.829	7279.00	4156.64	4140.86	-397.69	40°05'58.819"N	104°40'20.704"W	0.00	
11417.00†	90.000	359.828	7279.00	4256.50	4240.86	-397.99	40°05'59.807"N	104°40'20.707"W	0.00	
11517.00†	90.000	359.827	7279.00	4356.36	4340.86	-398.29	40°06'00.795"N	104°40'20.711"W	0.00	
11617.00†	90.000	359.826	7279.00	4456.22	4440.86	-398.59	40°06'01.783"N	104°40'20.715"W	0.00	
11717.00†	90.000	359.825	7279.00	4556.08	4540.86	-398.90	40°06'02.771"N	104°40'20.719"W	0.00	
11817.00†	90.000	359.824	7279.00	4655.94	4640.86	-399.20	40°06'03.760"N	104°40'20.723"W	0.00	
11917.00†	90.000	359.823	7279.00	4755.80	4740.86	-399.51	40°06'04.748"N	104°40'20.727"W	0.00	
12017.00†	90.000	359.823	7279.00	4855.65	4840.86	-399.82	40°06'05.736"N	104°40'20.731"W	0.00	
12117.00†	90.000	359.822	7279.00	4955.51	4940.86	-400.13	40°06'06.724"N	104°40'20.735"W	0.00	



Planned Wellpath Report

GITTLEIN 29C-28HZ (PERMIT) PWP

Page 5 of 7



REFERENCE WELLPATH IDENTIFICATION

Operator	KERR-MCGEE OIL & GAS ONSHORE LP	Slot	SLOT#05 GITTLEIN 29C-28HZ (175'FSL & 2037'FWL, SEC.33)
Area	COLORADO	Well	GITTLEIN 29C-28HZ
Field	WELD COUNTY (KERR MCGEE)	Wellbore	GITTLEIN 29C-28HZ PWB
Facility	SEC.33-T2N-R65W		

WELLPATH DATA (159 stations) † = interpolated/extrapolated station

MD [ft]	Inclination [°]	Azimuth [°]	TVD [ft]	Vert Sect [ft]	North [ft]	East [ft]	Latitude	Longitude	DLS [°/100ft]	Comments
12217.00†	90.000	359.821	7279.00	5055.37	5040.86	-400.44	40°06'07.713"N	104°40'20.739"W	0.00	
12317.00†	90.000	359.820	7279.00	5155.23	5140.86	-400.75	40°06'08.701"N	104°40'20.743"W	0.00	
12417.00†	90.000	359.819	7279.00	5255.09	5240.86	-401.07	40°06'09.689"N	104°40'20.747"W	0.00	
12517.00†	90.000	359.818	7279.00	5354.95	5340.86	-401.39	40°06'10.677"N	104°40'20.751"W	0.00	
12617.00†	90.000	359.817	7279.00	5454.82	5440.86	-401.70	40°06'11.665"N	104°40'20.756"W	0.00	
12717.00†	90.000	359.817	7279.00	5554.68	5540.85	-402.02	40°06'12.654"N	104°40'20.760"W	0.00	
12817.00†	90.000	359.816	7279.00	5654.54	5640.85	-402.34	40°06'13.642"N	104°40'20.764"W	0.00	
12917.00†	90.000	359.815	7279.00	5754.40	5740.85	-402.67	40°06'14.630"N	104°40'20.768"W	0.00	
13017.00†	90.000	359.814	7279.00	5854.26	5840.85	-402.99	40°06'15.618"N	104°40'20.772"W	0.00	
13117.00†	90.000	359.813	7279.00	5954.12	5940.85	-403.32	40°06'16.606"N	104°40'20.776"W	0.00	
13217.00†	90.000	359.812	7279.00	6053.98	6040.85	-403.64	40°06'17.595"N	104°40'20.781"W	0.00	
13317.00†	90.000	359.812	7279.00	6153.84	6140.85	-403.97	40°06'18.583"N	104°40'20.785"W	0.00	
13417.00†	90.000	359.811	7279.00	6253.70	6240.85	-404.30	40°06'19.571"N	104°40'20.789"W	0.00	
13517.00†	90.000	359.810	7279.00	6353.56	6340.85	-404.63	40°06'20.559"N	104°40'20.793"W	0.00	
13617.00†	90.000	359.809	7279.00	6453.42	6440.85	-404.96	40°06'21.547"N	104°40'20.798"W	0.00	
13717.00†	90.000	359.808	7279.00	6553.28	6540.85	-405.30	40°06'22.536"N	104°40'20.802"W	0.00	
13817.00†	90.000	359.807	7279.00	6653.14	6640.85	-405.63	40°06'23.524"N	104°40'20.806"W	0.00	
13917.00†	90.000	359.806	7279.00	6753.01	6740.85	-405.97	40°06'24.512"N	104°40'20.811"W	0.00	
14017.00†	90.000	359.806	7279.00	6852.87	6840.85	-406.31	40°06'25.500"N	104°40'20.815"W	0.00	
14117.00†	90.000	359.805	7279.00	6952.73	6940.85	-406.65	40°06'26.489"N	104°40'20.820"W	0.00	
14217.00†	90.000	359.804	7279.00	7052.59	7040.85	-406.99	40°06'27.477"N	104°40'20.824"W	0.00	
14317.00†	90.000	359.803	7279.00	7152.45	7140.85	-407.33	40°06'28.465"N	104°40'20.828"W	0.00	
14417.00†	90.000	359.802	7279.00	7252.31	7240.85	-407.68	40°06'29.453"N	104°40'20.833"W	0.00	
14443.40	90.000	359.802	7279.00 ¹	7278.67	7267.24	-407.77	40°06'29.714"N	104°40'20.834"W	0.00	End of 3D Arc

HOLE & CASING SECTIONS - Ref Wellbore: GITTLEIN 29C-28HZ PWB Ref Wellpath: GITTLEIN 29C-28HZ (PERMIT) PWP

String/Diameter	Start MD [ft]	End MD [ft]	Interval [ft]	Start TVD [ft]	End TVD [ft]	Start N/S [ft]	Start E/W [ft]	End N/S [ft]	End E/W [ft]
12.25in Open Hole	17.00	1300.00	1283.00	17.00	1300.00	0.00	0.00	0.00	0.00
9.625in Casing Surface	17.00	1300.00	1283.00	17.00	1300.00	0.00	0.00	0.00	0.00
8.75in Open Hole	1300.00	7620.69	6320.69	1300.00	7279.00	0.00	0.00	444.57	-387.64
7in Casing Intermediate	17.00	7620.69	7603.69	17.00	7279.00	0.00	0.00	444.57	-387.64
6.125in Open Hole	7620.69	14443.40	6822.71	7279.00	7279.00	444.57	-387.64	7267.24	-407.77
4.5in Casing Production	17.00	14443.40	14426.40	17.00	7279.00	0.00	0.00	7267.24	-407.77



Planned Wellpath Report

GITTLEIN 29C-28HZ (PERMIT) PWP

Page 6 of 7

**REFERENCE WELLPATH IDENTIFICATION**

Operator	KERR-MCGEE OIL & GAS ONSHORE LP	Slot	SLOT#05 GITTLEIN 29C-28HZ (175'FSL & 2037'FWL, SEC.33)
Area	COLORADO	Well	GITTLEIN 29C-28HZ
Field	WELD COUNTY (KERR MCGEE)	Wellbore	GITTLEIN 29C-28HZ PWB
Facility	SEC.33-T2N-R65W		

TARGETS

Name	MD [ft]	TVD [ft]	North [ft]	East [ft]	Grid East [US ft]	Grid North [US ft]	Latitude	Longitude	Shape
GITTLEIN 4 PAD SECTION 28 LINES		-5.00	-10.91	-899.25	3231045.24	1276079.08	40°05'17.790"N	104°40'27.156"W	polygon
GITTLEIN 4 PAD SECTION 33 LINES		-5.00	-10.91	-899.25	3231045.24	1276079.08	40°05'17.790"N	104°40'27.156"W	polygon
1) GITTLEIN 29C-28HZ BHL ON PLAT (2182'FSL & 1650'FWL, SEC.28) REV-1	14443.40	7279.00	7267.24	-407.77	3231468.64	1283361.21	40°06'29.714"N	104°40'20.834"W	point
GITTLEIN 4 PAD SEC. 28 HARDLINES (460'SETBACKS)		7295.00	-10.91	-899.25	3231045.24	1276079.08	40°05'17.790"N	104°40'27.156"W	polygon
GITTLEIN 4 PAD SEC. 33 HARDLINES (460'SETBACKS)		7295.00	-10.91	-899.25	3231045.24	1276079.08	40°05'17.790"N	104°40'27.156"W	polygon

SURVEY PROGRAM - Ref Wellbore: GITTLEIN 29C-28HZ PWB Ref Wellpath: GITTLEIN 29C-28HZ (PERMIT) PWP

Start MD [ft]	End MD [ft]	Positional Uncertainty Model	Log Name/Comment	Wellbore
17.00	7620.69	NaviTrak (Standard)		GITTLEIN 29C-28HZ PWB
7620.69	14443.40	OnTrak (Standard)		GITTLEIN 29C-28HZ PWB



Planned Wellpath Report
GITTLEIN 29C-28HZ (PERMIT) PWP
Page 7 of 7



REFERENCE WELLPATH IDENTIFICATION			
Operator	KERR-MCGEE OIL & GAS ONSHORE LP	Slot	SLOT#05 GITTLEIN 29C-28HZ (175'FSL & 2037'FWL, SEC.33)
Area	COLORADO	Well	GITTLEIN 29C-28HZ
Field	WELD COUNTY (KERR MCGEE)	Wellbore	GITTLEIN 29C-28HZ PWB
Facility	SEC.33-T2N-R65W		

WELLPATH COMMENTS				
MD [ft]	Inclination [°]	Azimuth [°]	TVD [ft]	Comment
751.00	0.000	249.700	751.00	FOX HILLS
4952.69	4.150	249.700	4944.00	SUSSEX
6942.31	22.485	350.388	6923.00	SHARON SPRINGS
6974.07	25.616	351.693	6952.00	NIOBRARA A
7057.05	33.834	354.028	7024.00	NIOBRARA B
7164.24	44.490	355.884	7107.00	NIOBRARA C
7437.40	71.715	358.570	7250.00	FORT HAYS
7552.85	83.232	359.397	7275.00	CODELL