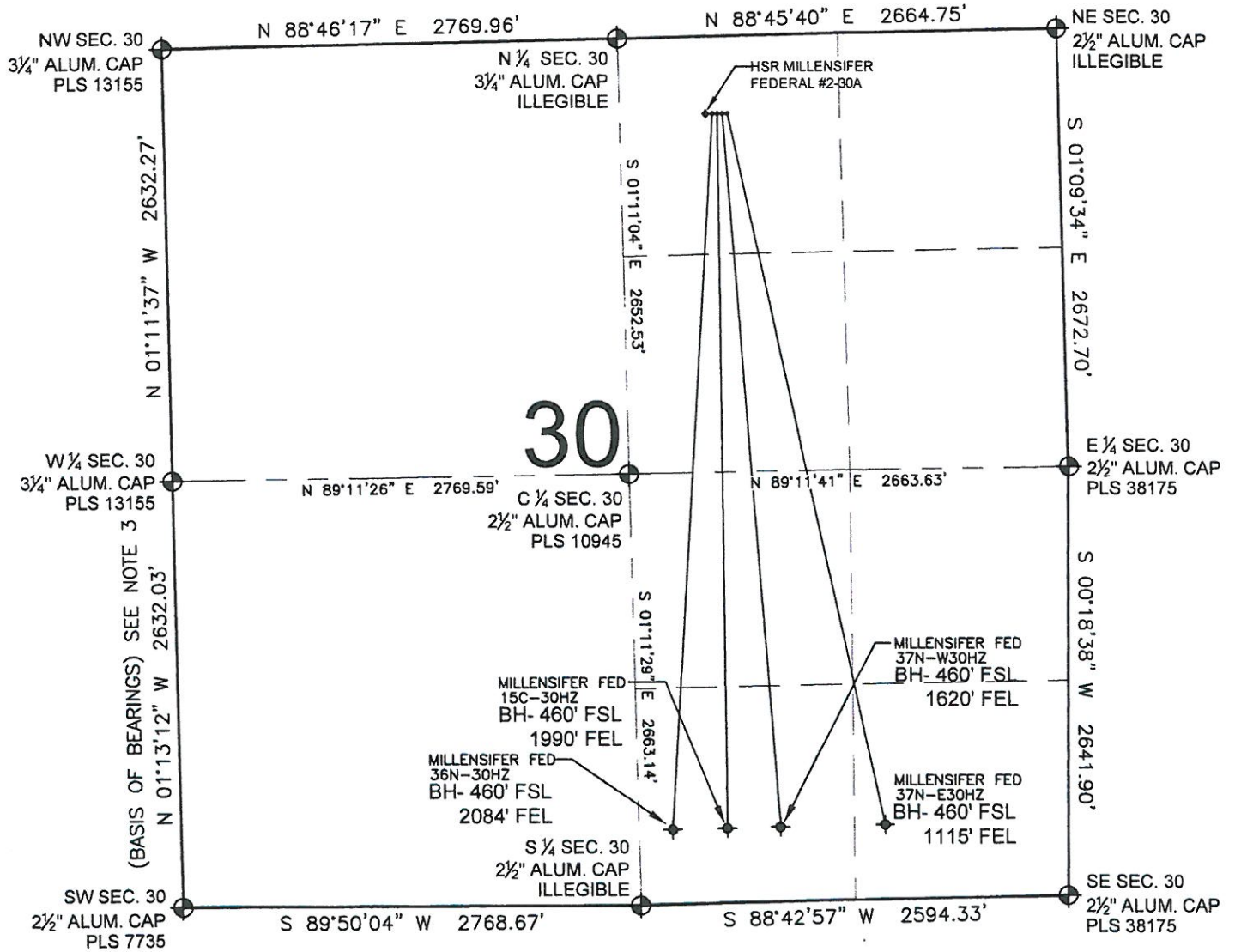


PAD DRAWING - MILLENSIFER 4 PAD

SECTION 30, TOWNSHIP 3 NORTH, RANGE 66 WEST, 6TH P.M.



LEGEND

- ⊕ = EXISTING MONUMENT
- ⊙ = PROPOSED WELL
- ⊕ = BOTTOM HOLE
- ⊙ = EXISTING WELL
- BH = BOTTOM HOLE

NOTES:

- MILLENSIFER FED 36N-30HZ TO BE AT 471' FNL, 2099' FEL.
- BOTTOM HOLE AT 460' FSL & 2084' FEL
- MILLENSIFER FED 15C-30HZ TO BE AT 472' FNL, 2069' FEL.
- BOTTOM HOLE AT 460' FSL & 1990' FEL.
- MILLENSIFER FED 37N-W30HZ TO BE AT 472' FNL, 2039' FEL.
- BOTTOM HOLE AT 460' FSL & 1620' FEL.
- MILLENSIFER FED 37N-E30HZ TO BE AT 473' FNL, 2009' FEL.
- BOTTOM HOLE AT 460' FSL & 1115' FEL.
- HSR MILLENSIFER FEDERAL #2-30A IS AT 470' FNL, 2129' FEL.

NOTES:

1. THIS FIELD SURVEY CONFORMS TO THE MINIMUM STANDARDS SET BY THE C.O.G.C.C., RULE NO. 215
2. HORIZONTAL POSITIONS AND ORTHOMETRIC ELEVATIONS SHOWN AT THE WELL HEAD, ARE BASED ON GPS-RTK POSITIONS DERIVED FROM MINIMUM 2-HOUR STATIC OBSERVATIONS CORRECTED BY THE NATIONAL GEODETIC SURVEY ONLINE POSITIONING USER SERVICE, O.P.U.S. DATUM: HORIZONTAL = NAD83/2007, VERTICAL = NAVD88
3. THE BASIS OF BEARINGS ARE STATE PLANE COORDINATE SYSTEM GRID BEARINGS SHOWN HEREON BETWEEN THE DESCRIBED MONUMENTS SHOWN HEREON.
4. GRID DISTANCES ARE SHOWN, AS MEASURED IN THE FIELD, WITH TIES TO WELLS MEASURED PERPENDICULAR TO SECTION LINES.

PREPARED BY:

PFS llc

Petroleum Field Services, LLC
1801 W. 13th Ave.
Denver, CO 80204



KERR-MCGEE OIL & GAS ONSHORE LP

FIELD DATE: 02-17-12	PAD NAME: MILLENSIFER 4 PAD
DRAWING DATE: 07-27-12	SURFACE LOCATION: WELD COUNTY, COLORADO
REV: SMF	CHECKED: SVT
NW 1/4 NE 1/4, SEC. 30, T3N, R66W, 6TH P.M.	

