

KERR-MCGEE OIL & GAS ONSHORE LP

Location: COLORADO Slot: SLOT#07 GITTLEIN 3C-28HZ (207'FSL & 2087'FWL, SEC.33)
Field: WELD COUNTY (KERR MCGEE) Well: GITTLEIN 3C-28HZ
Facility: SEC.33-T2N-R65W Wellbore: GITTLEIN 3C-28HZ PWB

Plot reference wellpath is GITTLEIN 3C-28HZ (PERMIT) PWP

True vertical depths are referenced to Rig on SLOT#07 GITTLEIN 3C-28HZ (207'FSL & 2087'FWL, SEC.33) (RKB)	Grid System: NAD83 / Lambert Colorado SP, Northern Zone (501), US feet
Measured depths are referenced to Rig on SLOT#07 GITTLEIN 3C-28HZ (207'FSL & 2087'FWL, SEC.33) (RKB)	North Reference: True north
Rig on SLOT#07 GITTLEIN 3C-28HZ (207'FSL & 2087'FWL, SEC.33) (RKB) to Mean Sea Level: 4928 feet	Scale: True distance
Mean Sea Level to Mud line (At Slot: SLOT#07 GITTLEIN 3C-28HZ (207'FSL & 2087'FWL, SEC.33)): 0 feet	Depths are in feet
Coordinates are in feet referenced to Slot	Created by: wlsjef02 on 8/20/2012

Location Information

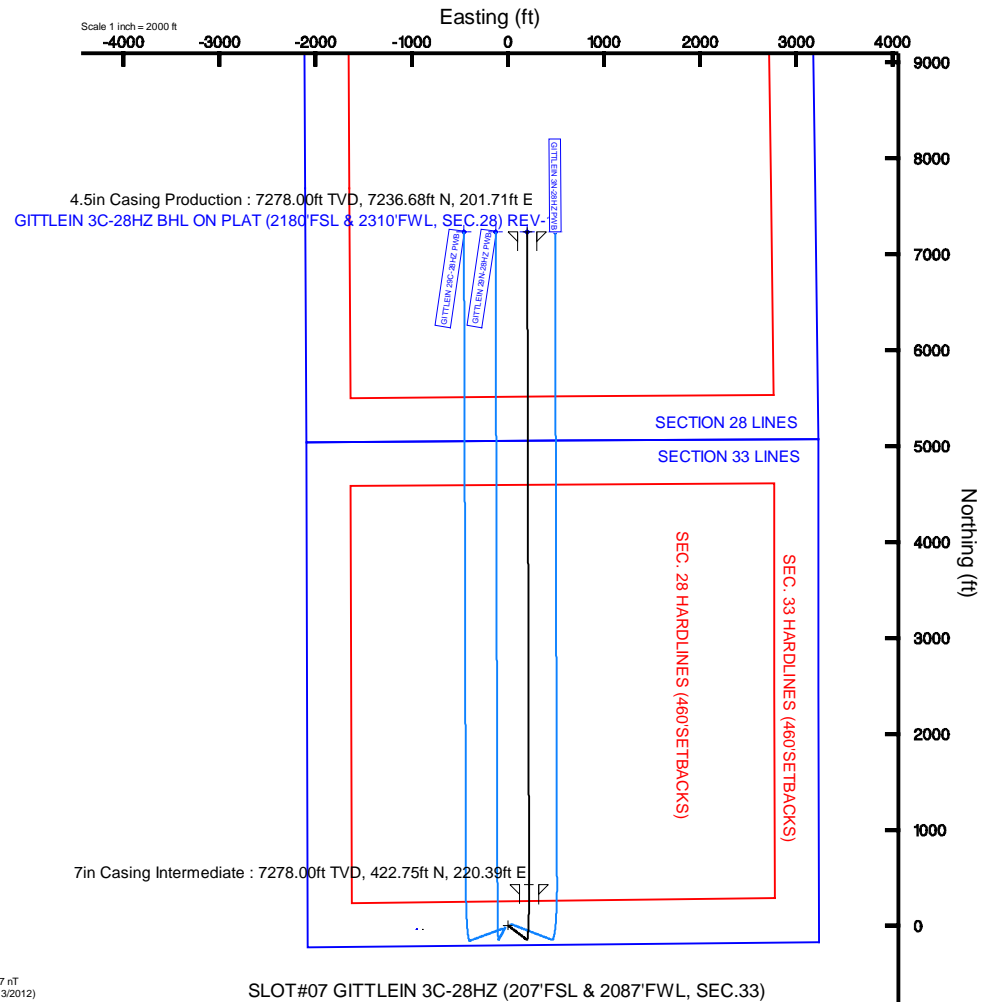
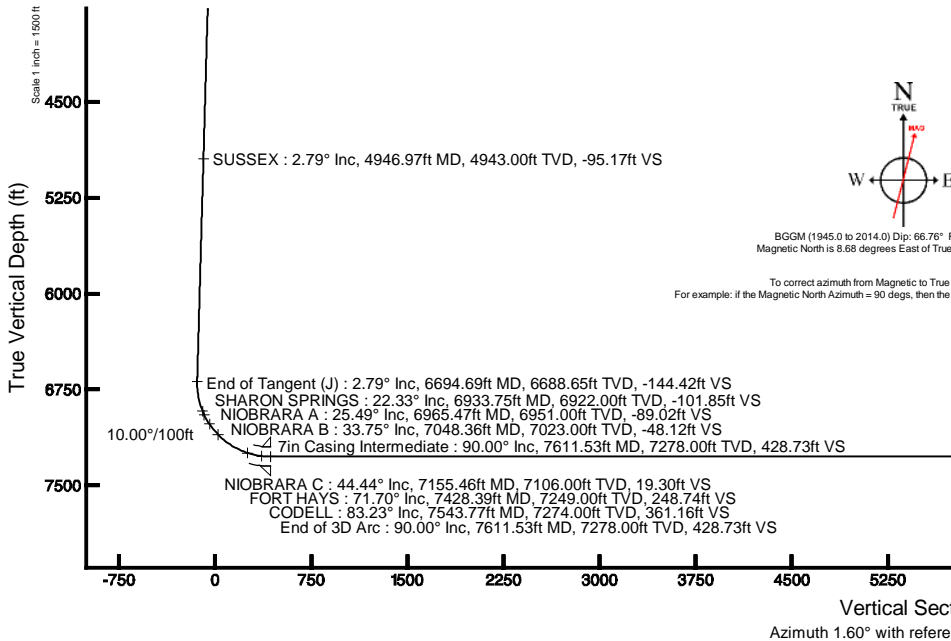
Facility Name			Grid East (US ft)	Grid North (US ft)	Latitude	Longitude
SEC.33-T2N-R65W			3231045.236	1278079.076	40°05'17.790"N	104°40'27.156"W
Slot	Local N (ft)	Local E (ft)	Grid East (US ft)	Grid North (US ft)	Latitude	Longitude
SLOT#07 GITTLEIN 3C-28HZ (207FSL & 2087FWL, SEC.33)	43.33	949.62	3231994.369	1278131.243	40°05'18.218"N	104°40'14.938"W
Rig on SLOT#07 GITTLEIN 3C-28HZ (207FSL & 2087FWL, SEC.33) (RKB) to Mud line (At Slot: SLOT#07 GITTLEIN 3C-28HZ (207FSL & 2087FWL, SEC.33))					4928ft	
Mean Sea Level to Mud line (At Slot: SLOT#07 GITTLEIN 3C-28HZ (207FSL & 2087FWL, SEC.33))					0ft	
Rig on SLOT#07 GITTLEIN 3C-28HZ (207FSL & 2087FWL, SEC.33) (RKB) to Mean Sea Level					4928ft	

Well Profile Data

Design Comment	MD (ft)	Inc (°)	Az (°)	TVD (ft)	Local N (ft)	Local E (ft)	DLS (°/100ft)	VS (ft)
Tie On	17.00	0.000	127.000	17.00	0.00	0.00	0.00	0.00
End of Tangent	1500.00	0.000	127.000	1500.00	0.00	0.00	0.00	0.00
End of Build (J)	1639.40	2.788	127.000	1639.34	-2.04	2.71	2.00	-1.96
End of Tangent (J)	6694.69	2.788	127.000	6688.65	-150.02	199.09	0.00	-144.42
End of 3D Arc	7611.53	90.000	359.843	7278.00	422.75	220.39	10.00	428.73
End of 3D Arc	14425.48	90.000	359.843	7278.00	7236.68	201.71	0.00	7239.49

Targets

Name	MD (ft)	TVD (ft)	Local N (ft)	Local E (ft)	Grid East (US ft)	Grid North (US ft)	Latitude	Longitude
GITTLEIN 4 PAD SECTION 28 LINES		-6.00	-43.29	-949.62	3231045.24	1278079.08	40°05'17.790"N	104°40'27.156"W
GITTLEIN 4 PAD SECTION 33 LINES		-6.00	-43.29	-949.62	3231045.24	1278079.08	40°05'17.790"N	104°40'27.156"W
GITTLEIN 3C-28HZ BHL ON PLAT (2180'FSL & 2310'FWL, SEC.28) REV-1	14425.48	7278.00	7236.68	201.71	3232128.40	1283389.19	40°06'29.732"N	104°40'12.342"W
GITTLEIN 4 PAD SEC. 28 HARDLINES (460' SETBACKS)		7294.00	-43.29	-949.62	3231045.24	1278079.08	40°05'17.790"N	104°40'27.156"W
GITTLEIN 4 PAD SEC. 33 HARDLINES (460' SETBACKS)		7294.00	-43.29	-949.62	3231045.24	1278079.08	40°05'17.790"N	104°40'27.156"W





Planned Wellpath Report
GITTLEIN 3C-28HZ (PERMIT) PWP
Page 1 of 7



REFERENCE WELLPATH IDENTIFICATION			
Operator	KERR-MCGEE OIL & GAS ONSHORE LP	Slot	SLOT#07 GITTLEIN 3C-28HZ (207'FSL & 2087'FWL, SEC.33)
Area	COLORADO	Well	GITTLEIN 3C-28HZ
Field	WELD COUNTY (KERR MCGEE)	Wellbore	GITTLEIN 3C-28HZ PWB
Facility	SEC.33-T2N-R65W		

REPORT SETUP INFORMATION			
Projection System	NAD83 / Lambert Colorado SP, Northern Zone (501), US feet	Software System	WellArchitect® 3.0.2
North Reference	True	User	Wilsjef02
Scale	0.999961	Report Generated	8/20/2012 at 10:15:17
Convergence at slot	0.54° East	Database/Source file	WellArchitectDB/GITTLEIN_3C-28HZ_PWB.xml

WELLPATH LOCATION						
	Local coordinates		Grid coordinates		Geographic coordinates	
	North[ft]	East[ft]	Easting[US ft]	Northing[US ft]	Latitude	Longitude
Slot Location	43.33	949.62	3231994.37	1276131.24	40°05'18.218"N	104°40'14.938"W
Facility Reference Pt			3231045.24	1276079.08	40°05'17.790"N	104°40'27.156"W
Field Reference Pt			3197771.84	1268891.29	40°04'09.600"N	104°47'36.000"W

WELLPATH DATUM		
Calculation method	Minimum curvature	Rig on SLOT#07 GITTLEIN 3C-28HZ (207'FSL & 2087'FWL, SEC.33) (RKB) to Facility Vertical Datum
Horizontal Reference Pt	Slot	Rig on SLOT#07 GITTLEIN 3C-28HZ (207'FSL & 2087'FWL, SEC.33) (RKB) to Mean Sea Level
Vertical Reference Pt	Rig on SLOT#07 GITTLEIN 3C-28HZ (207'FSL & 2087'FWL, SEC.33) (RKB)	Rig on SLOT#07 GITTLEIN 3C-28HZ (207'FSL & 2087'FWL, SEC.33) (RKB) to Mud Line at Slot (SLOT#07 GITTLEIN 3C-
MD Reference Pt	Rig on SLOT#07 GITTLEIN 3C-28HZ (207'FSL & 2087'FWL, SEC.33) (RKB)	Section Origin
Field Vertical Reference	Mean Sea Level	Section Azimuth



Planned Wellpath Report

GITTLEIN 3C-28HZ (PERMIT) PWP

Page 2 of 7



REFERENCE WELLPATH IDENTIFICATION

Operator	KERR-MCGEE OIL & GAS ONSHORE LP	Slot	SLOT#07 GITTLEIN 3C-28HZ (207'FSL & 2087'FWL, SEC.33)
Area	COLORADO	Well	GITTLEIN 3C-28HZ
Field	WELD COUNTY (KERR MCGEE)	Wellbore	GITTLEIN 3C-28HZ PWB
Facility	SEC.33-T2N-R6SW		

WELLPATH DATA (159 stations) † = interpolated/extrapolated station

MD [ft]	Inclination [°]	Azimuth [°]	TVD [ft]	Vert Sect [ft]	North [ft]	East [ft]	Latitude	Longitude	DLS [°/100ft]	Comments
0.00†	0.000	127.000	0.00	0.00	0.00	0.00	40°05'18.218"N	104°40'14.938"W	0.00	
17.00	0.000	127.000	17.00	0.00	0.00	0.00	40°05'18.218"N	104°40'14.938"W	0.00	Tie On
117.00†	0.000	127.000	117.00	0.00	0.00	0.00	40°05'18.218"N	104°40'14.938"W	0.00	
217.00†	0.000	127.000	217.00	0.00	0.00	0.00	40°05'18.218"N	104°40'14.938"W	0.00	
317.00†	0.000	127.000	317.00	0.00	0.00	0.00	40°05'18.218"N	104°40'14.938"W	0.00	
417.00†	0.000	127.000	417.00	0.00	0.00	0.00	40°05'18.218"N	104°40'14.938"W	0.00	
517.00†	0.000	127.000	517.00	0.00	0.00	0.00	40°05'18.218"N	104°40'14.938"W	0.00	
617.00†	0.000	127.000	617.00	0.00	0.00	0.00	40°05'18.218"N	104°40'14.938"W	0.00	
717.00†	0.000	127.000	717.00	0.00	0.00	0.00	40°05'18.218"N	104°40'14.938"W	0.00	
750.00†	0.000	127.000	750.00	0.00	0.00	0.00	40°05'18.218"N	104°40'14.938"W	0.00	FOX HILLS
817.00†	0.000	127.000	817.00	0.00	0.00	0.00	40°05'18.218"N	104°40'14.938"W	0.00	
917.00†	0.000	127.000	917.00	0.00	0.00	0.00	40°05'18.218"N	104°40'14.938"W	0.00	
1017.00†	0.000	127.000	1017.00	0.00	0.00	0.00	40°05'18.218"N	104°40'14.938"W	0.00	
1117.00†	0.000	127.000	1117.00	0.00	0.00	0.00	40°05'18.218"N	104°40'14.938"W	0.00	
1217.00†	0.000	127.000	1217.00	0.00	0.00	0.00	40°05'18.218"N	104°40'14.938"W	0.00	
1317.00†	0.000	127.000	1317.00	0.00	0.00	0.00	40°05'18.218"N	104°40'14.938"W	0.00	
1417.00†	0.000	127.000	1417.00	0.00	0.00	0.00	40°05'18.218"N	104°40'14.938"W	0.00	
1500.00	0.000	127.000	1500.00	0.00	0.00	0.00	40°05'18.218"N	104°40'14.938"W	0.00	End of Tangent
1517.00†	0.340	127.000	1517.00	-0.03	-0.03	0.04	40°05'18.218"N	104°40'14.937"W	2.00	
1617.00†	2.340	127.000	1616.97	-1.38	-1.44	1.91	40°05'18.204"N	104°40'14.913"W	2.00	
1639.40	2.788	127.000	1639.34	-1.96	-2.04	2.71	40°05'18.198"N	104°40'14.903"W	2.00	End of Build (J)
1717.00†	2.788	127.000	1716.85	-4.15	-4.31	5.72	40°05'18.175"N	104°40'14.864"W	0.00	
1817.00†	2.788	127.000	1816.73	-6.97	-7.24	9.61	40°05'18.146"N	104°40'14.814"W	0.00	
1917.00†	2.788	127.000	1916.62	-9.79	-10.17	13.49	40°05'18.118"N	104°40'14.764"W	0.00	
2017.00†	2.788	127.000	2016.50	-12.60	-13.09	17.38	40°05'18.089"N	104°40'14.714"W	0.00	
2117.00†	2.788	127.000	2116.38	-15.42	-16.02	21.26	40°05'18.060"N	104°40'14.664"W	0.00	
2217.00†	2.788	127.000	2216.26	-18.24	-18.95	25.15	40°05'18.031"N	104°40'14.614"W	0.00	
2317.00†	2.788	127.000	2316.14	-21.06	-21.88	29.03	40°05'18.002"N	104°40'14.564"W	0.00	
2417.00†	2.788	127.000	2416.02	-23.88	-24.80	32.91	40°05'17.973"N	104°40'14.515"W	0.00	
2517.00†	2.788	127.000	2515.91	-26.69	-27.73	36.80	40°05'17.944"N	104°40'14.465"W	0.00	
2617.00†	2.788	127.000	2615.79	-29.51	-30.66	40.68	40°05'17.915"N	104°40'14.415"W	0.00	
2717.00†	2.788	127.000	2715.67	-32.33	-33.58	44.57	40°05'17.886"N	104°40'14.365"W	0.00	
2817.00†	2.788	127.000	2815.55	-35.15	-36.51	48.45	40°05'17.857"N	104°40'14.315"W	0.00	
2917.00†	2.788	127.000	2915.43	-37.97	-39.44	52.34	40°05'17.828"N	104°40'14.265"W	0.00	
3017.00†	2.788	127.000	3015.31	-40.78	-42.37	56.22	40°05'17.799"N	104°40'14.215"W	0.00	
3117.00†	2.788	127.000	3115.20	-43.60	-45.29	60.11	40°05'17.770"N	104°40'14.165"W	0.00	
3217.00†	2.788	127.000	3215.08	-46.42	-48.22	63.99	40°05'17.741"N	104°40'14.115"W	0.00	
3317.00†	2.788	127.000	3314.96	-49.24	-51.15	67.88	40°05'17.713"N	104°40'14.065"W	0.00	
3417.00†	2.788	127.000	3414.84	-52.06	-54.08	71.76	40°05'17.684"N	104°40'14.015"W	0.00	
3517.00†	2.788	127.000	3514.72	-54.87	-57.00	75.65	40°05'17.655"N	104°40'13.965"W	0.00	
3617.00†	2.788	127.000	3614.60	-57.69	-59.93	79.53	40°05'17.626"N	104°40'13.915"W	0.00	
3717.00†	2.788	127.000	3714.49	-60.51	-62.86	83.41	40°05'17.597"N	104°40'13.865"W	0.00	
3817.00†	2.788	127.000	3814.37	-63.33	-65.78	87.30	40°05'17.568"N	104°40'13.815"W	0.00	
3917.00†	2.788	127.000	3914.25	-66.14	-68.71	91.18	40°05'17.539"N	104°40'13.765"W	0.00	
4017.00†	2.788	127.000	4014.13	-68.96	-71.64	95.07	40°05'17.510"N	104°40'13.715"W	0.00	



Planned Wellpath Report

GITTLEIN 3C-28HZ (PERMIT) PWP

Page 3 of 7



REFERENCE WELLPATH IDENTIFICATION

Operator	KERR-MCGEE OIL & GAS ONSHORE LP	Slot	SLOT#07 GITTLEIN 3C-28HZ (207'FSL & 2087'FWL, SEC.33)
Area	COLORADO	Well	GITTLEIN 3C-28HZ
Field	WELD COUNTY (KERR MCGEE)	Wellbore	GITTLEIN 3C-28HZ PWB
Facility	SEC.33-T2N-R6SW		

WELLPATH DATA (159 stations) † = interpolated/extrapolated station

MD [ft]	Inclination [°]	Azimuth [°]	TVD [ft]	Vert Sect [ft]	North [ft]	East [ft]	Latitude	Longitude	DLS [°/100ft]	Comments
4117.00†	2.788	127.000	4114.01	-71.78	-74.57	98.95	40°05'17.481"N	104°40'13.665"W	0.00	
4217.00†	2.788	127.000	4213.89	-74.60	-77.49	102.84	40°05'17.452"N	104°40'13.615"W	0.00	
4317.00†	2.788	127.000	4313.78	-77.42	-80.42	106.72	40°05'17.423"N	104°40'13.565"W	0.00	
4417.00†	2.788	127.000	4413.66	-80.23	-83.35	110.61	40°05'17.394"N	104°40'13.515"W	0.00	
4517.00†	2.788	127.000	4513.54	-83.05	-86.28	114.49	40°05'17.365"N	104°40'13.465"W	0.00	
4617.00†	2.788	127.000	4613.42	-85.87	-89.20	118.38	40°05'17.336"N	104°40'13.415"W	0.00	
4717.00†	2.788	127.000	4713.30	-88.69	-92.13	122.26	40°05'17.308"N	104°40'13.365"W	0.00	
4817.00†	2.788	127.000	4813.18	-91.51	-95.06	126.15	40°05'17.279"N	104°40'13.315"W	0.00	
4917.00†	2.788	127.000	4913.07	-94.32	-97.98	130.03	40°05'17.250"N	104°40'13.265"W	0.00	
4946.97†	2.788	127.000	4943.00	-95.17	-98.86	131.19	40°05'17.241"N	104°40'13.250"W	0.00	SUSSEX
5047.00†	2.788	127.000	5012.95	-97.14	-100.91	133.91	40°05'17.221"N	104°40'13.215"W	0.00	
5117.00†	2.788	127.000	5112.83	-99.96	-103.84	137.80	40°05'17.192"N	104°40'13.165"W	0.00	
5217.00†	2.788	127.000	5212.71	-102.78	-106.77	141.68	40°05'17.163"N	104°40'13.115"W	0.00	
5317.00†	2.788	127.000	5312.59	-105.60	-109.69	145.57	40°05'17.134"N	104°40'13.065"W	0.00	
5417.00†	2.788	127.000	5412.47	-108.41	-112.62	149.45	40°05'17.105"N	104°40'13.015"W	0.00	
5517.00†	2.788	127.000	5512.36	-111.23	-115.55	153.34	40°05'17.076"N	104°40'12.965"W	0.00	
5617.00†	2.788	127.000	5612.24	-114.05	-118.48	157.22	40°05'17.047"N	104°40'12.915"W	0.00	
5717.00†	2.788	127.000	5712.12	-116.87	-121.40	161.11	40°05'17.018"N	104°40'12.865"W	0.00	
5817.00†	2.788	127.000	5812.00	-119.68	-124.33	164.99	40°05'16.989"N	104°40'12.815"W	0.00	
5917.00†	2.788	127.000	5911.88	-122.50	-127.26	168.88	40°05'16.960"N	104°40'12.765"W	0.00	
6017.00†	2.788	127.000	6011.76	-125.32	-130.18	172.76	40°05'16.931"N	104°40'12.715"W	0.00	
6117.00†	2.788	127.000	6111.65	-128.14	-133.11	176.65	40°05'16.903"N	104°40'12.665"W	0.00	
6217.00†	2.788	127.000	6211.53	-130.96	-136.04	180.53	40°05'16.874"N	104°40'12.615"W	0.00	
6317.00†	2.788	127.000	6311.41	-133.77	-138.97	184.41	40°05'16.845"N	104°40'12.565"W	0.00	
6417.00†	2.788	127.000	6411.29	-136.59	-141.89	188.30	40°05'16.816"N	104°40'12.515"W	0.00	
6517.00†	2.788	127.000	6511.17	-139.41	-144.82	192.18	40°05'16.787"N	104°40'12.465"W	0.00	
6617.00†	2.788	127.000	6611.05	-142.23	-147.75	196.07	40°05'16.758"N	104°40'12.415"W	0.00	
6694.69	2.788	127.000	6688.65	-144.42	-150.02	199.09	40°05'16.735"N	104°40'12.377"W	0.00	End of Tangent (J)
6717.00†	2.289	76.002	6710.94	-144.61	-150.24	199.95	40°05'16.733"N	104°40'12.365"W	10.00	
6817.00†	10.777	11.609	6810.27	-134.84	-140.58	203.78	40°05'16.829"N	104°40'12.316"W	10.00	
6917.00†	20.662	5.750	6906.42	-107.97	-113.80	207.44	40°05'17.093"N	104°40'12.269"W	10.00	
6933.75†	22.327	5.266	6922.00	-101.85	-107.69	208.03	40°05'17.154"N	104°40'12.261"W	10.00	SHARON SPRINGS
6965.47†	25.485	4.513	6951.00	-89.02	-94.88	209.12	40°05'17.280"N	104°40'12.247"W	10.00	NIOBRARA A
7017.00†	30.620	3.603	6996.46	-64.81	-70.72	210.82	40°05'17.519"N	104°40'12.226"W	10.00	
7048.36†	33.748	3.173	7023.00	-48.12	-54.04	211.80	40°05'17.684"N	104°40'12.213"W	10.00	NIOBRARA B
7117.00†	40.598	2.439	7077.66	-6.68	-12.64	213.81	40°05'18.093"N	104°40'12.187"W	10.00	
7155.46†	44.437	2.111	7106.00	19.30	13.32	214.84	40°05'18.350"N	104°40'12.174"W	10.00	NIOBRARA C
7217.00†	50.583	1.671	7147.55	64.66	58.66	216.33	40°05'18.798"N	104°40'12.155"W	10.00	
7317.00†	60.572	1.098	7204.01	147.04	141.02	218.29	40°05'19.612"N	104°40'12.129"W	10.00	
7417.00†	70.563	0.628	7245.32	237.97	231.94	219.65	40°05'20.510"N	104°40'12.112"W	10.00	
7428.39†	71.701	0.578	7249.00	248.74	242.71	219.76	40°05'20.617"N	104°40'12.111"W	10.00	FORT HAYS
7517.00†	80.555	0.213	7270.22	334.66	328.65	220.35	40°05'21.466"N	104°40'12.103"W	10.00	
7543.77†	83.230	0.107	7274.00	361.16	355.15	220.42	40°05'21.728"N	104°40'12.102"W	10.00	CODELL
7611.53	90.000	359.843	7278.00	428.73	422.75	220.39	40°05'22.396"N	104°40'12.102"W	10.00	End of 3D Arc
7617.00†	90.000	359.843	7278.00	434.20	428.22	220.38	40°05'22.450"N	104°40'12.103"W	0.00	



Planned Wellpath Report

GITTLEIN 3C-28HZ (PERMIT) PWP

Page 4 of 7



REFERENCE WELLPATH IDENTIFICATION

Operator	KERR-MCGEE OIL & GAS ONSHORE LP	Slot	SLOT#07 GITTLEIN 3C-28HZ (207'FSL & 2087'FWL, SEC.33)
Area	COLORADO	Well	GITTLEIN 3C-28HZ
Field	WELD COUNTY (KERR MCGEE)	Wellbore	GITTLEIN 3C-28HZ PWB
Facility	SEC.33-T2N-R65W		

WELLPATH DATA (159 stations) † = interpolated/extrapolated station

MD [ft]	Inclination [°]	Azimuth [°]	TVD [ft]	Vert Sect [ft]	North [ft]	East [ft]	Latitude	Longitude	DLS [°/100ft]	Comments
7717.00†	90.000	359.843	7278.00	534.15	528.22	220.10	40°05'23.438"N	104°40'12.106"W	0.00	
7817.00†	90.000	359.843	7278.00	634.10	628.22	219.83	40°05'24.426"N	104°40'12.110"W	0.00	
7917.00†	90.000	359.843	7278.00	734.06	728.22	219.55	40°05'25.414"N	104°40'12.113"W	0.00	
8017.00†	90.000	359.843	7278.00	834.01	828.22	219.28	40°05'26.403"N	104°40'12.117"W	0.00	
8117.00†	90.000	359.843	7278.00	933.96	928.22	219.01	40°05'27.391"N	104°40'12.120"W	0.00	
8217.00†	90.000	359.843	7278.00	1033.92	1028.22	218.73	40°05'28.379"N	104°40'12.124"W	0.00	
8317.00†	90.000	359.843	7278.00	1133.87	1128.22	218.46	40°05'29.367"N	104°40'12.127"W	0.00	
8417.00†	90.000	359.843	7278.00	1233.82	1228.22	218.18	40°05'30.355"N	104°40'12.131"W	0.00	
8517.00†	90.000	359.843	7278.00	1333.78	1328.22	217.91	40°05'31.344"N	104°40'12.134"W	0.00	
8617.00†	90.000	359.843	7278.00	1433.73	1428.22	217.64	40°05'32.332"N	104°40'12.138"W	0.00	
8717.00†	90.000	359.843	7278.00	1533.68	1528.22	217.36	40°05'33.320"N	104°40'12.141"W	0.00	
8817.00†	90.000	359.843	7277.99	1633.64	1628.22	217.09	40°05'34.308"N	104°40'12.145"W	0.00	
8917.00†	90.000	359.843	7277.99	1733.59	1728.22	216.81	40°05'35.297"N	104°40'12.148"W	0.00	
9017.00†	90.000	359.843	7277.99	1833.54	1828.22	216.54	40°05'36.285"N	104°40'12.152"W	0.00	
9117.00†	90.000	359.843	7277.99	1933.49	1928.22	216.26	40°05'37.273"N	104°40'12.155"W	0.00	
9217.00†	90.000	359.843	7277.99	2033.45	2028.22	215.99	40°05'38.261"N	104°40'12.159"W	0.00	
9317.00†	90.000	359.843	7277.99	2133.40	2128.22	215.72	40°05'39.249"N	104°40'12.162"W	0.00	
9417.00†	90.000	359.843	7277.99	2233.35	2228.22	215.44	40°05'40.238"N	104°40'12.166"W	0.00	
9517.00†	90.000	359.843	7277.99	2333.31	2328.22	215.17	40°05'41.226"N	104°40'12.169"W	0.00	
9617.00†	90.000	359.843	7277.99	2433.26	2428.22	214.89	40°05'42.214"N	104°40'12.173"W	0.00	
9717.00†	90.000	359.843	7277.99	2533.21	2528.22	214.62	40°05'43.202"N	104°40'12.176"W	0.00	
9817.00†	90.000	359.843	7277.99	2633.17	2628.22	214.35	40°05'44.190"N	104°40'12.180"W	0.00	
9917.00†	90.000	359.843	7277.99	2733.12	2728.21	214.07	40°05'45.179"N	104°40'12.183"W	0.00	
10017.00†	90.000	359.843	7277.99	2833.07	2828.21	213.80	40°05'46.167"N	104°40'12.187"W	0.00	
10117.00†	90.000	359.843	7277.99	2933.03	2928.21	213.52	40°05'47.155"N	104°40'12.190"W	0.00	
10217.00†	90.000	359.843	7277.99	3032.98	3028.21	213.25	40°05'48.143"N	104°40'12.194"W	0.00	
10317.00†	90.000	359.843	7277.99	3132.93	3128.21	212.98	40°05'49.132"N	104°40'12.197"W	0.00	
10417.00†	90.000	359.843	7277.99	3232.89	3228.21	212.70	40°05'50.120"N	104°40'12.201"W	0.00	
10517.00†	90.000	359.843	7277.99	3332.84	3328.21	212.43	40°05'51.108"N	104°40'12.204"W	0.00	
10617.00†	90.000	359.843	7277.99	3432.79	3428.21	212.15	40°05'52.096"N	104°40'12.208"W	0.00	
10717.00†	90.000	359.843	7277.99	3532.75	3528.21	211.88	40°05'53.084"N	104°40'12.212"W	0.00	
10817.00†	90.000	359.843	7277.99	3632.70	3628.21	211.60	40°05'54.073"N	104°40'12.215"W	0.00	
10917.00†	90.000	359.843	7277.99	3732.65	3728.21	211.33	40°05'55.061"N	104°40'12.219"W	0.00	
11017.00†	90.000	359.843	7277.99	3832.60	3828.21	211.06	40°05'56.049"N	104°40'12.222"W	0.00	
11117.00†	90.000	359.843	7277.99	3932.56	3928.21	210.78	40°05'57.037"N	104°40'12.226"W	0.00	
11217.00†	90.000	359.843	7277.99	4032.51	4028.21	210.51	40°05'58.025"N	104°40'12.229"W	0.00	
11317.00†	90.000	359.843	7277.99	4132.46	4128.21	210.23	40°05'59.014"N	104°40'12.233"W	0.00	
11417.00†	90.000	359.843	7277.99	4232.42	4228.21	209.96	40°06'00.002"N	104°40'12.236"W	0.00	
11517.00†	90.000	359.843	7277.99	4332.37	4328.21	209.69	40°06'00.990"N	104°40'12.240"W	0.00	
11617.00†	90.000	359.843	7277.99	4432.32	4428.21	209.41	40°06'01.978"N	104°40'12.243"W	0.00	
11717.00†	90.000	359.843	7277.99	4532.28	4528.21	209.14	40°06'02.966"N	104°40'12.247"W	0.00	
11817.00†	90.000	359.843	7277.99	4632.23	4628.21	208.86	40°06'03.955"N	104°40'12.250"W	0.00	
11917.00†	90.000	359.843	7277.99	4732.18	4728.21	208.59	40°06'04.943"N	104°40'12.254"W	0.00	
12017.00†	90.000	359.843	7277.99	4832.14	4828.21	208.31	40°06'05.931"N	104°40'12.257"W	0.00	
12117.00†	90.000	359.843	7277.99	4932.09	4928.21	208.04	40°06'06.919"N	104°40'12.261"W	0.00	



Planned Wellpath Report

GITTLEIN 3C-28HZ (PERMIT) PWP

Page 5 of 7



REFERENCE WELLPATH IDENTIFICATION

Operator	KERR-MCGEE OIL & GAS ONSHORE LP	Slot	SLOT#07 GITTLEIN 3C-28HZ (207'FSL & 2087'FWL, SEC.33)
Area	COLORADO	Well	GITTLEIN 3C-28HZ
Field	WELD COUNTY (KERR MCGEE)	Wellbore	GITTLEIN 3C-28HZ PWB
Facility	SEC.33-T2N-R65W		

WELLPATH DATA (159 stations) † = interpolated/extrapolated station

MD [ft]	Inclination [°]	Azimuth [°]	TVD [ft]	Vert Sect [ft]	North [ft]	East [ft]	Latitude	Longitude	DLS [°/100ft]	Comments
12217.00†	90.000	359.843	7277.99	5032.04	5028.21	207.77	40°06'07.908"N	104°40'12.264"W	0.00	
12317.00†	90.000	359.843	7277.99	5132.00	5128.21	207.49	40°06'08.896"N	104°40'12.268"W	0.00	
12417.00†	90.000	359.843	7277.99	5231.95	5228.21	207.22	40°06'09.884"N	104°40'12.271"W	0.00	
12517.00†	90.000	359.843	7277.99	5331.90	5328.20	206.94	40°06'10.872"N	104°40'12.275"W	0.00	
12617.00†	90.000	359.843	7277.99	5431.86	5428.20	206.67	40°06'11.860"N	104°40'12.278"W	0.00	
12717.00†	90.000	359.843	7277.99	5531.81	5528.20	206.40	40°06'12.849"N	104°40'12.282"W	0.00	
12817.00†	90.000	359.843	7277.99	5631.76	5628.20	206.12	40°06'13.837"N	104°40'12.285"W	0.00	
12917.00†	90.000	359.843	7278.00	5731.71	5728.20	205.85	40°06'14.825"N	104°40'12.289"W	0.00	
13017.00†	90.000	359.843	7278.00	5831.67	5828.20	205.57	40°06'15.813"N	104°40'12.292"W	0.00	
13117.00†	90.000	359.843	7278.00	5931.62	5928.20	205.30	40°06'16.801"N	104°40'12.296"W	0.00	
13217.00†	90.000	359.843	7278.00	6031.57	6028.20	205.02	40°06'17.790"N	104°40'12.299"W	0.00	
13317.00†	90.000	359.843	7278.00	6131.53	6128.20	204.75	40°06'18.778"N	104°40'12.303"W	0.00	
13417.00†	90.000	359.843	7278.00	6231.48	6228.20	204.48	40°06'19.766"N	104°40'12.307"W	0.00	
13517.00†	90.000	359.843	7278.00	6331.43	6328.20	204.20	40°06'20.754"N	104°40'12.310"W	0.00	
13617.00†	90.000	359.843	7278.00	6431.39	6428.20	203.93	40°06'21.742"N	104°40'12.314"W	0.00	
13717.00†	90.000	359.843	7278.00	6531.34	6528.20	203.65	40°06'22.731"N	104°40'12.317"W	0.00	
13817.00†	90.000	359.843	7278.00	6631.29	6628.20	203.38	40°06'23.719"N	104°40'12.321"W	0.00	
13917.00†	90.000	359.843	7278.00	6731.25	6728.20	203.10	40°06'24.707"N	104°40'12.324"W	0.00	
14017.00†	90.000	359.843	7278.00	6831.20	6828.20	202.83	40°06'25.695"N	104°40'12.328"W	0.00	
14117.00†	90.000	359.843	7278.00	6931.15	6928.20	202.56	40°06'26.684"N	104°40'12.331"W	0.00	
14217.00†	90.000	359.843	7278.00	7031.11	7028.20	202.28	40°06'27.672"N	104°40'12.335"W	0.00	
14317.00†	90.000	359.843	7278.00	7131.06	7128.20	202.01	40°06'28.660"N	104°40'12.338"W	0.00	
14417.00†	90.000	359.843	7278.00	7231.01	7228.20	201.73	40°06'29.648"N	104°40'12.342"W	0.00	
14425.48	90.000	359.843	7278.00 ¹	7239.49	7236.68	201.71	40°06'29.732"N	104°40'12.342"W	0.00	End of 3D Arc

HOLE & CASING SECTIONS - Ref Wellbore: GITTLEIN 3C-28HZ PWB Ref Wellpath: GITTLEIN 3C-28HZ (PERMIT) PWP

String/Diameter	Start MD [ft]	End MD [ft]	Interval [ft]	Start TVD [ft]	End TVD [ft]	Start N/S [ft]	Start E/W [ft]	End N/S [ft]	End E/W [ft]
12.25in Open Hole	17.00	1300.00	1283.00	17.00	1300.00	0.00	0.00	0.00	0.00
9.625in Casing Surface	17.00	1300.00	1283.00	17.00	1300.00	0.00	0.00	0.00	0.00
8.75in Open Hole	17.00	7611.53	7594.53	17.00	7278.00	0.00	0.00	422.75	220.39
7in Casing Intermediate	17.00	7611.53	7594.53	17.00	7278.00	0.00	0.00	422.75	220.39
6.125in Open Hole	7611.53	14425.48	6813.95	7278.00	7278.00	422.75	220.39	7236.68	201.71
4.5in Casing Production	17.00	14425.48	14408.48	17.00	7278.00	0.00	0.00	7236.68	201.71



Planned Wellpath Report

GITTLEIN 3C-28HZ (PERMIT) PWP

Page 6 of 7

**REFERENCE WELLPATH IDENTIFICATION**

Operator	KERR-MCGEE OIL & GAS ONSHORE LP	Slot	SLOT#07 GITTLEIN 3C-28HZ (207'FSL & 2087'FWL, SEC.33)
Area	COLORADO	Well	GITTLEIN 3C-28HZ
Field	WELD COUNTY (KERR MCGEE)	Wellbore	GITTLEIN 3C-28HZ PWB
Facility	SEC.33-T2N-R65W		

TARGETS

Name	MD [ft]	TVD [ft]	North [ft]	East [ft]	Grid East [US ft]	Grid North [US ft]	Latitude	Longitude	Shape
GITTLEIN 4 PAD SECTION 28 LINES		-6.00	-43.29	-949.62	3231045.24	1276079.08	40°05'17.790"N	104°40'27.156"W	polygon
GITTLEIN 4 PAD SECTION 33 LINES		-6.00	-43.29	-949.62	3231045.24	1276079.08	40°05'17.790"N	104°40'27.156"W	polygon
1) GITTLEIN 3C-28HZ BHL ON PLAT (2180'FSL & 2310'FWL, SEC.28) REV-1	14425.48	7278.00	7236.68	201.71	3232128.40	1283369.19	40°06'29.732"N	104°40'12.342"W	point
GITTLEIN 4 PAD SEC. 28 HARDLINES (460'SETBACKS)		7294.00	-43.29	-949.62	3231045.24	1276079.08	40°05'17.790"N	104°40'27.156"W	polygon
GITTLEIN 4 PAD SEC. 33 HARDLINES (460'SETBACKS)		7294.00	-43.29	-949.62	3231045.24	1276079.08	40°05'17.790"N	104°40'27.156"W	polygon

SURVEY PROGRAM - Ref Wellbore: GITTLEIN 3C-28HZ PWB Ref Wellpath: GITTLEIN 3C-28HZ (PERMIT) PWP

Start MD [ft]	End MD [ft]	Positional Uncertainty Model	Log Name/Comment	Wellbore
17.00	7611.53	NaviTrak (Standard)		GITTLEIN 3C-28HZ PWB
7611.53	14425.48	OnTrak (Standard)		GITTLEIN 3C-28HZ PWB



Planned Wellpath Report
GITTLEIN 3C-28HZ (PERMIT) PWP
Page 7 of 7



REFERENCE WELLPATH IDENTIFICATION			
Operator	KERR-MCGEE OIL & GAS ONSHORE LP	Slot	SLOT#07 GITTLEIN 3C-28HZ (207'FSL & 2087'FWL, SEC.33)
Area	COLORADO	Well	GITTLEIN 3C-28HZ
Field	WELD COUNTY (KERR MCGEE)	Wellbore	GITTLEIN 3C-28HZ PWB
Facility	SEC.33-T2N-R65W		

WELLPATH COMMENTS				
MD [ft]	Inclination [°]	Azimuth [°]	TVD [ft]	Comment
750.00	0.000	127.000	750.00	FOX HILLS
4946.97	2.788	127.000	4943.00	SUSSEX
6933.75	22.327	5.266	6922.00	SHARON SPRINGS
6965.47	25.485	4.513	6951.00	NIOBRARA A
7048.36	33.748	3.173	7023.00	NIOBRARA B
7155.46	44.437	2.111	7106.00	NIOBRARA C
7428.39	71.701	0.578	7249.00	FORT HAYS
7543.77	83.230	0.107	7274.00	CODELL