

NOBLE ENERGY, INC.
TIMBRO FEDERAL LD29-78HN & TIMBRO LD19-73HN
 LOCATED IN WELD COUNTY, COLORADO
 SECTION 19, T9N, R58W, 6th P.M.



PHOTO: VIEW OF LOCATION STAKES

CAMERA ANGLE: NORTHERLY

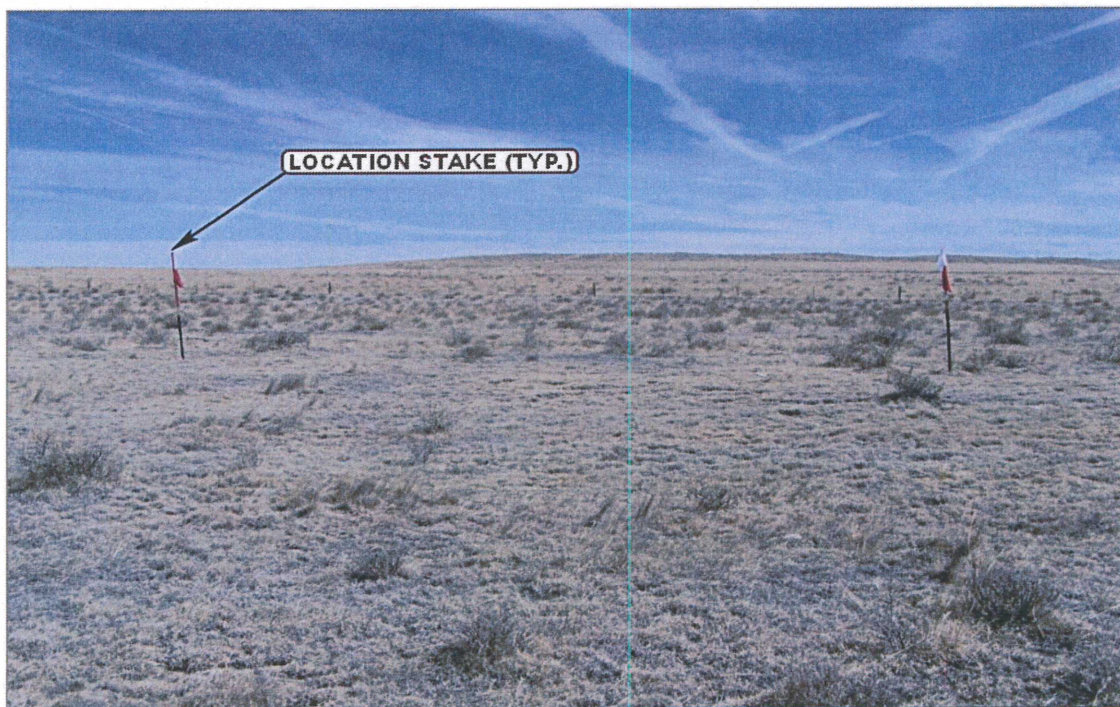


PHOTO: VIEW OF LOCATION STAKES

CAMERA ANGLE: EASTERLY



UELS Uintah Engineering & Land Surveying
 85 South 200 East Vernal, Utah 84078
 (435) 789-1017 * FAX (435) 789-1813

LOCATION PHOTOS

04	13	12
MONTH	DAY	YEAR

PHOTO
P1

TAKEN BY: D.S.	DRAWN BY: B.D.H.	REV: 08-30-12 J.L.H.
----------------	------------------	----------------------

NOBLE ENERGY, INC.
TIMBRO FEDERAL LD29-78HN & TIMBRO LD19-73HN
LOCATED IN WELD COUNTY, COLORADO
SECTION 19, T9N, R58W, 6th P.M.

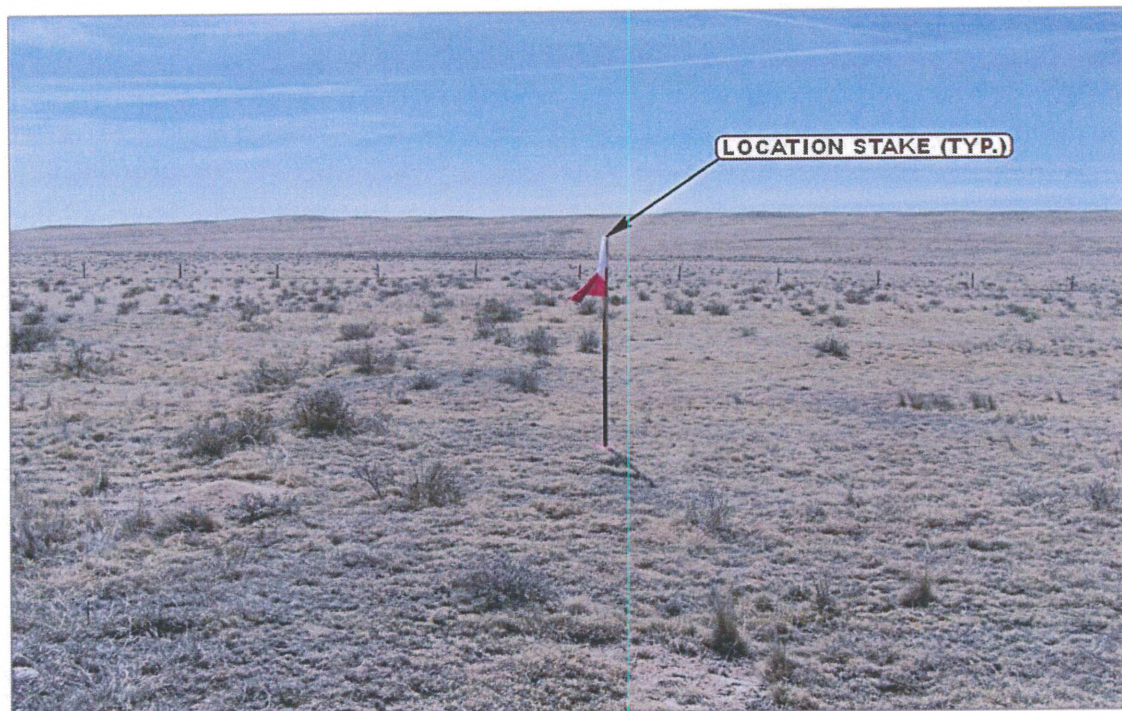


PHOTO: VIEW OF LOCATION STAKES

CAMERA ANGLE: SOUTHERLY



PHOTO: VIEW OF LOCATION STAKES

CAMERA ANGLE: WESTERLY



- Since 1964 -

UELS Uintah Engineering & Land Surveying
85 South 200 East Vernal, Utah 84078
(435) 789-1017 * FAX (435) 789-1813

LOCATION PHOTOS

04 **13** **12**
MONTH DAY YEAR

TAKEN BY: D.S. DRAWN BY: B.D.H. REV: 08-30-12 J.L.H.

PHOTO
P2