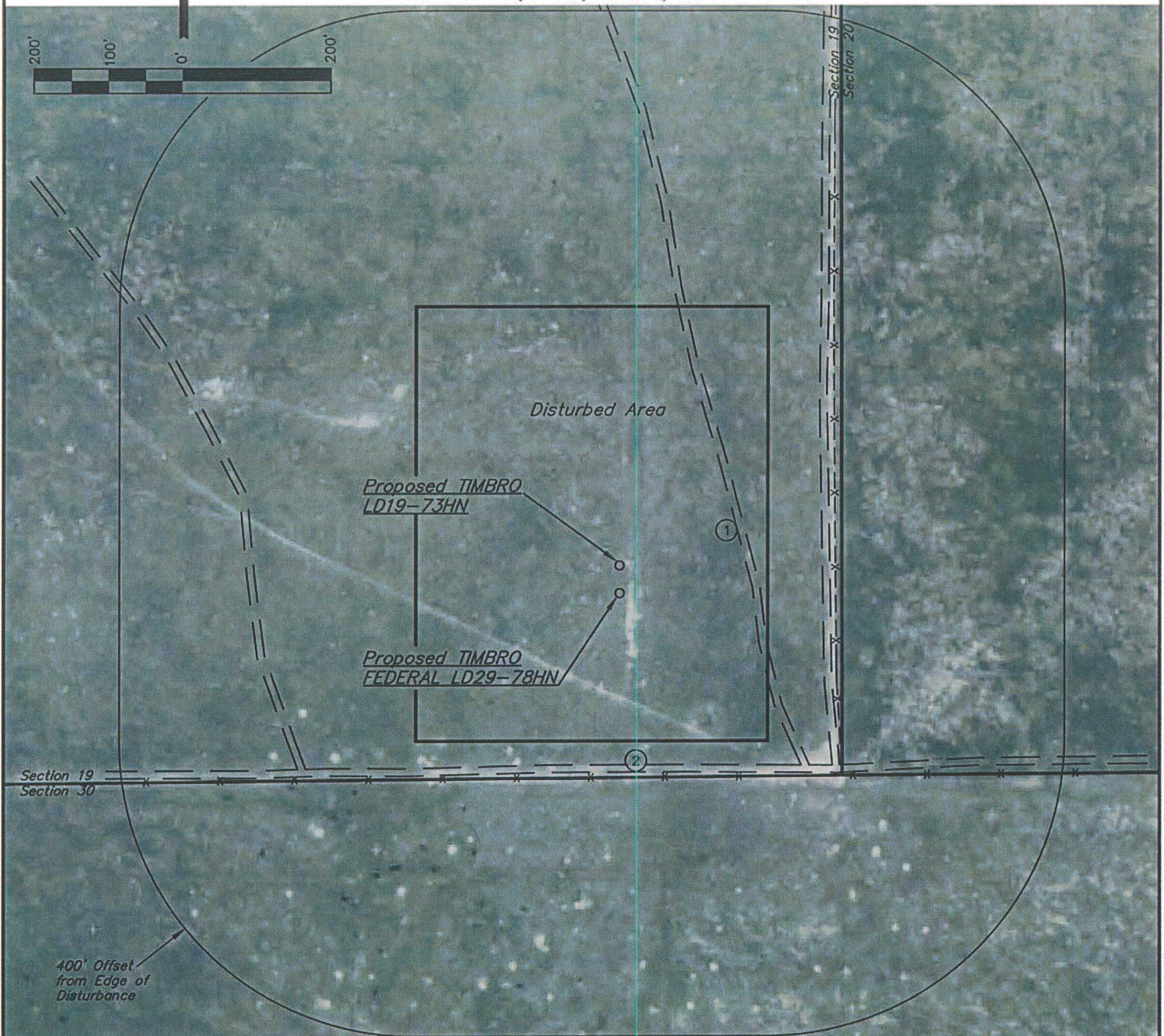


NOBLE ENERGY, INC.

LOCATION DRAWING FOR

TIMBRO FEDERAL LD29-78HN & TIMBRO LD19-73HN  
SECTION 19, T9N, R58W, 6th P.M.

DATE: 04-09-12  
DRAWN BY: B.L.B.  
REV: 08-30-12 S.R.L.



NOTE:  
DIRECTION AND DISTANCE TO IMPROVEMENTS AND NEAREST FEATURES ARE FROM PROPOSED TIMBRO FEDERAL LD29-78HN.

IMPROVEMENTS:

- ① 2-TRACK 180' NE, 491' W, 238' S, 279' E
- ② FENCE 249' S, 292' E

PAD DETAILS:

WELL HEAD SPACING = 37.5'

NEAREST FEATURE: BUILDING 5280' +, PUBLIC ROAD  
1500' E (CR 102), ABOVE GROUND UTILITY 5280' +,  
RAILROAD 5280' +, PROPERTY LINE 250' SOUTH

UINTAH ENGINEERING & LAND SURVEYING  
85 So. 200 East \* Vernal, Utah 84078 \* (435) 789-1017