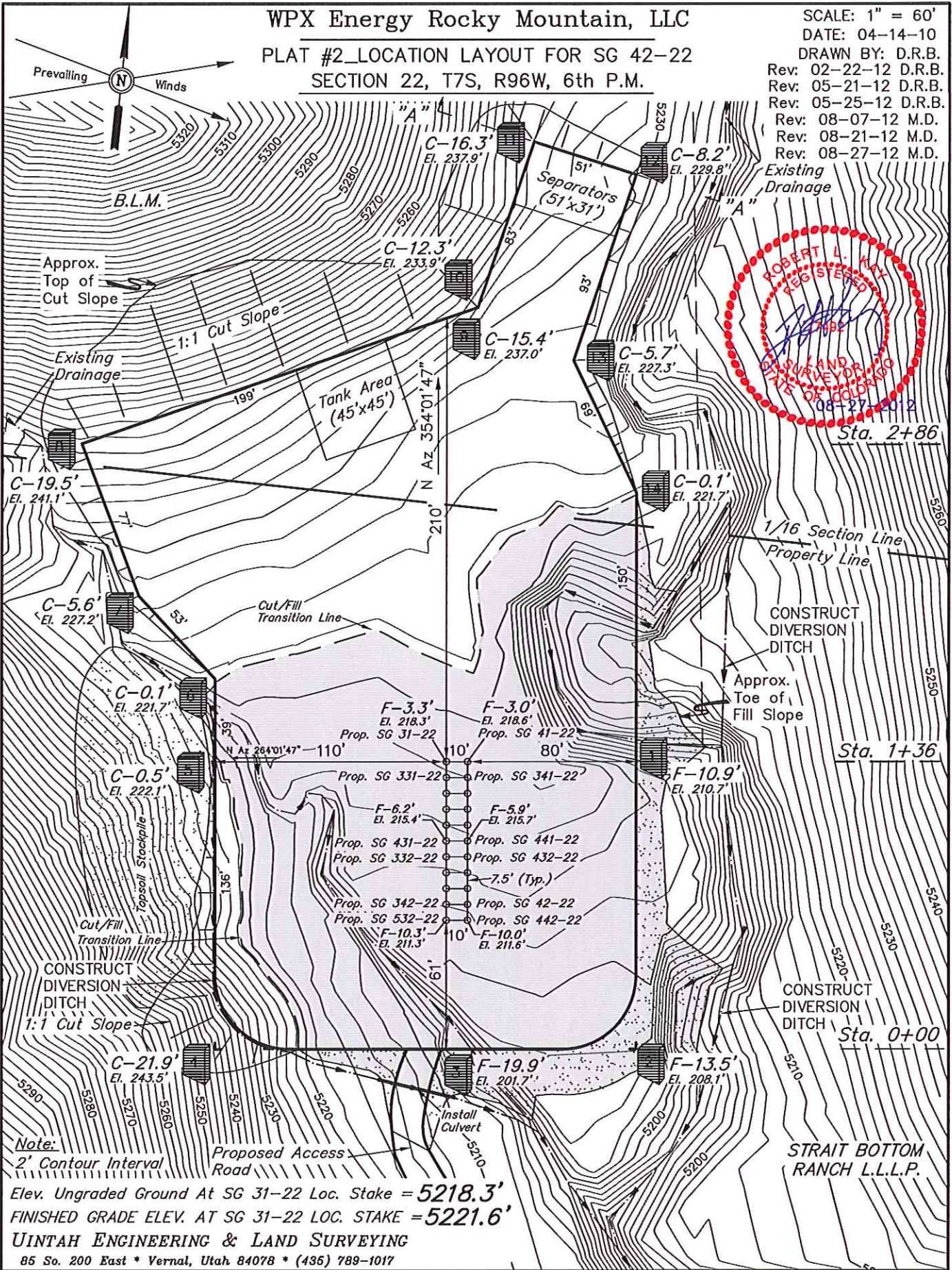


WPX Energy Rocky Mountain, LLC

PLAT #2_LOCATION LAYOUT FOR SG 42-22
SECTION 22, T7S, R96W, 6th P.M.

SCALE: 1" = 60'
DATE: 04-14-10
DRAWN BY: D.R.B.
Rev: 02-22-12 D.R.B.
Rev: 05-21-12 D.R.B.
Rev: 05-25-12 D.R.B.
Rev: 08-07-12 M.D.
Rev: 08-21-12 M.D.
Rev: 08-27-12 M.D.



ROBERT L. KAY
 REGISTERED
 PROFESSIONAL ENGINEER
 STATE OF COLORADO
 08-27-2012

Note:
2' Contour Interval
Elev. Ungraded Ground At SG 31-22 Loc. Stake = 5218.3'
FINISHED GRADE ELEV. AT SG 31-22 LOC. STAKE = 5221.6'
UINTAH ENGINEERING & LAND SURVEYING
85 So. 200 East * Vernal, Utah 84078 * (435) 789-1017

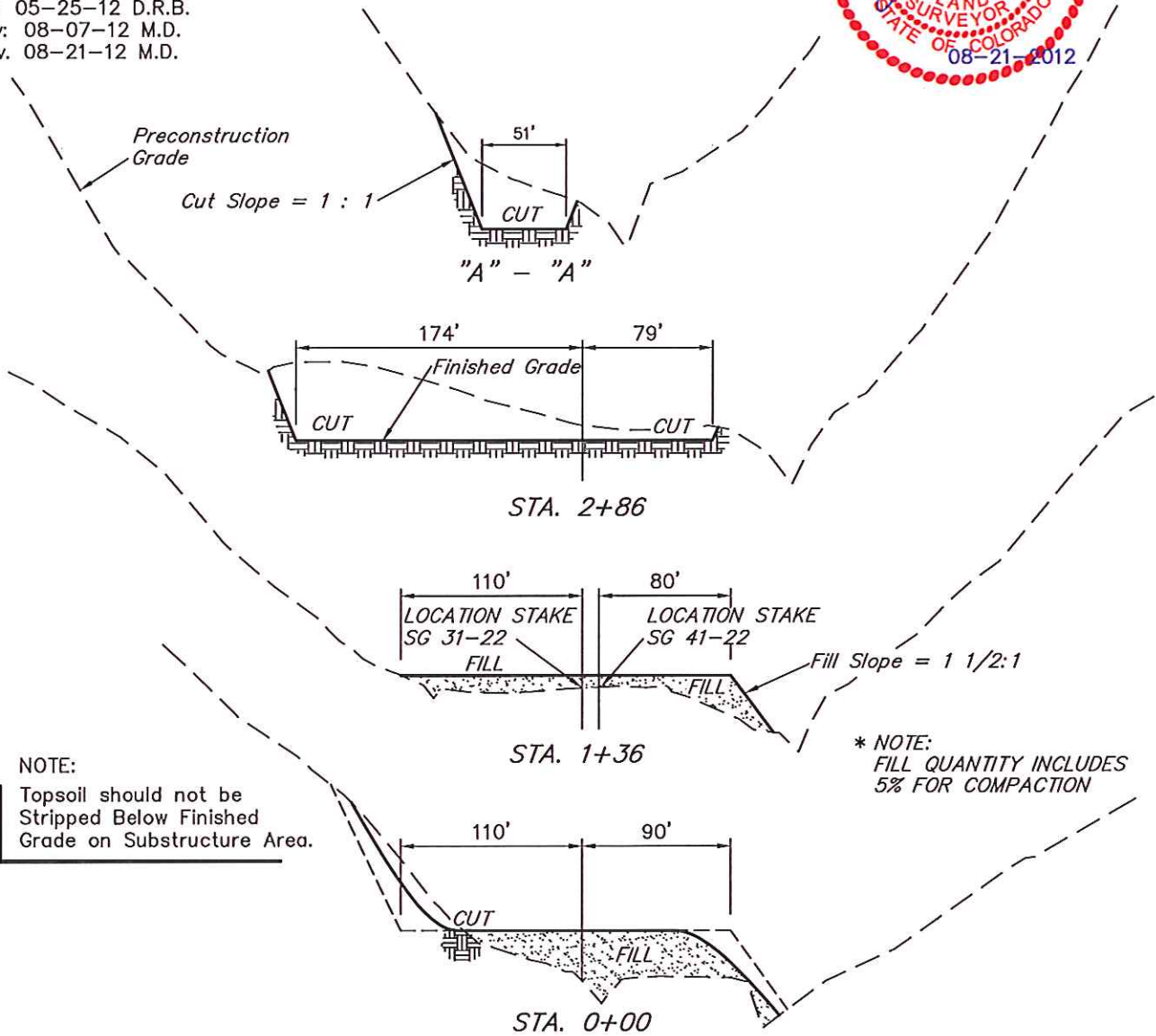
WPX Energy Rocky Mountain, LLC

PLAT #3_TYPICAL CROSS SECTION FOR SG 42-22
SECTION 22, T7S, R96W, 6th P.M.

1" = 50'
X-Section
Scale
1" = 100'



DRAWN BY: D.R.B.
DATE: 04-14-10
Rev: 02-23-12 D.R.B.
Rev: 05-21-12 D.R.B.
Rev: 05-25-12 D.R.B.
Rev: 08-07-12 M.D.
Rev: 08-21-12 M.D.



NOTE:
Topsoil should not be Stripped Below Finished Grade on Substructure Area.

* NOTE:
FILL QUANTITY INCLUDES 5% FOR COMPACTION

APPROXIMATE WELL PAD YARDAGES

(6") Topsoil Stripping	=	1,980 Cu. Yds.
Remaining Location	=	13,370 Cu. Yds.
TOTAL CUT	=	15,350 CU.YDS.
FILL	=	13,370 CU.YDS.
EXCESS MATERIAL	=	1,980 Cu. Yds.
Topsoil	=	1,980 Cu. Yds.
EXCESS UNBALANCE (After Interim Rehabilitation)	=	0 Cu. Yds.