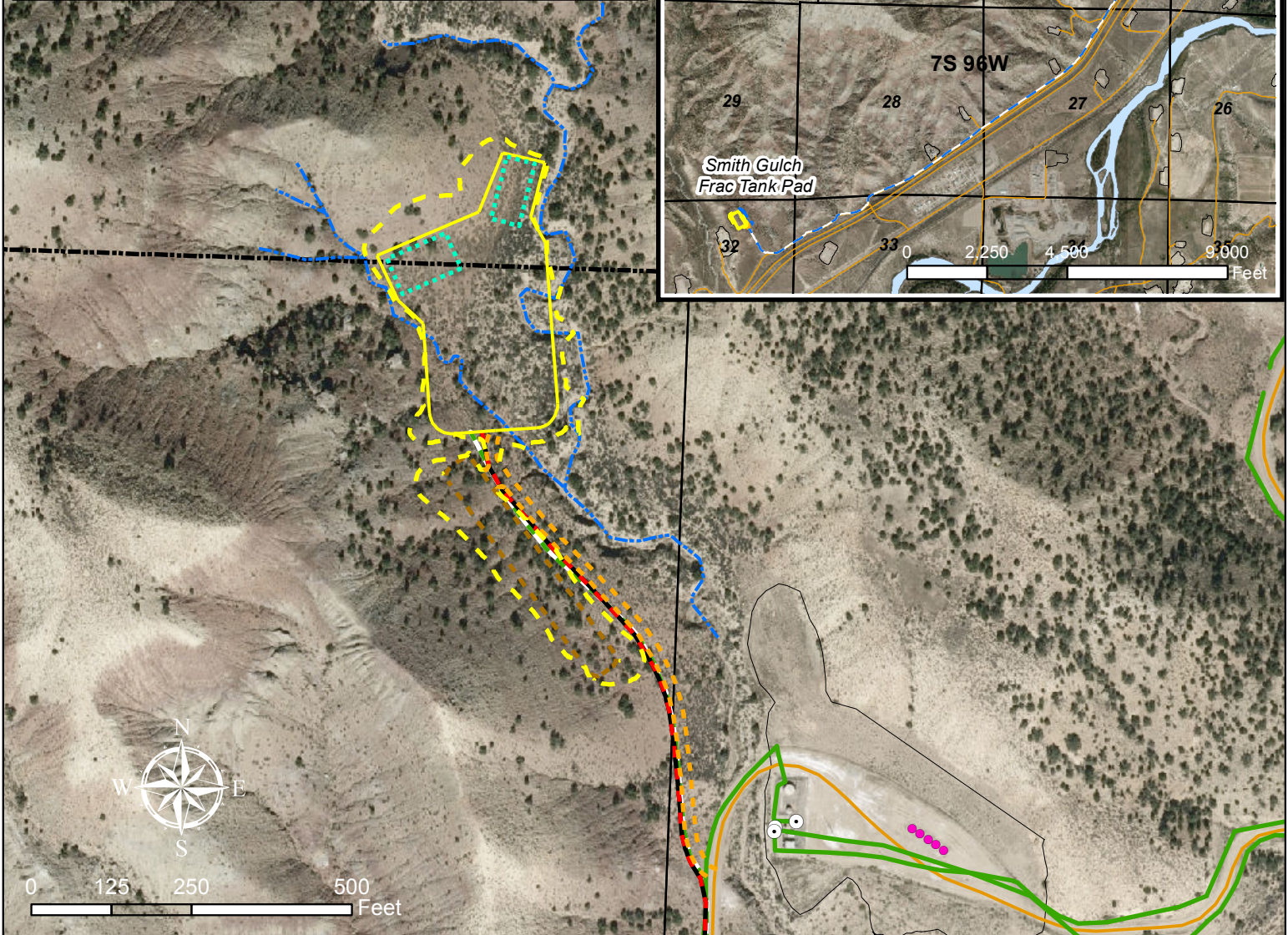
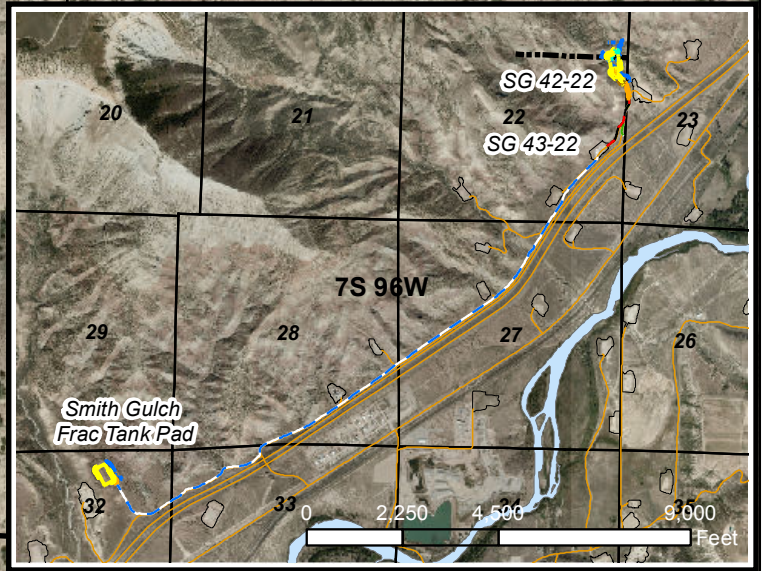


Geologist Information

General: New location, 13 new wells
 Ownership: Bosley Surface, Split Minerals
 SUA Status: Need Amending
 Spacing Units: 1 spacing units – NE ¼ Sec 22, 160 Acre Unit
 Adjacent Owners: BLM, Verkerk and Fay



Plan of Development

Access: Use new access from SG 12-23 pad as shown on map
 Drilling: Efficiency rig
 Cuttings: Along access road in cuttings management area
 SIMOPS: Yes
 Completion: Frac from SG 43-22 pad. Will run 3–4.5" surface frac lines to pad along access road. Tanks to be set on Smith Gulch Frac Tank Pad for water storage. 10" surface poly will be run from SK Holdings to SG 43-22.
 Flowback: Flow back to the SG 43-22 pad
 Prod Equip: Production equipment to be set on the north end of pad.
 Pipeline: New 8" gas line to run up to pad and tie in at the main road to the 12". New 6" flex steel line up the road. Currently no tie in for water line.

Legend

- Production Gas Well
- ⊗ Future
- Ⓟ Pig L/R
- ⊙ Blow Down
- ⊗ Valve or Valve Set
- ▲ Meter Run
- Proposed Road
- Proposed Cuttings Management Area
- Proposed Production Equipment Area
- Property Boundary (Surveyed)
- Proposed Daylight Line
- Proposed Pad or Pit
- Drainage
- Temporary Surface Frac Water Supply
- Temporary
- Existing Gas Pipeline
- Proposed Gas Pipeline
- Existing Water Pipeline

WPX Energy Rocky Mountain, LLC

SG 42-22 Plan of Development
 T7S R96W, Section 22

June 19, 2012

