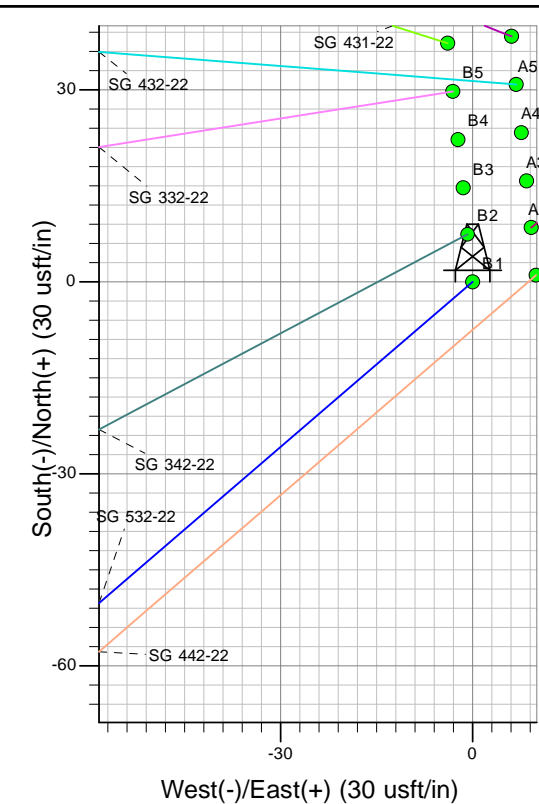
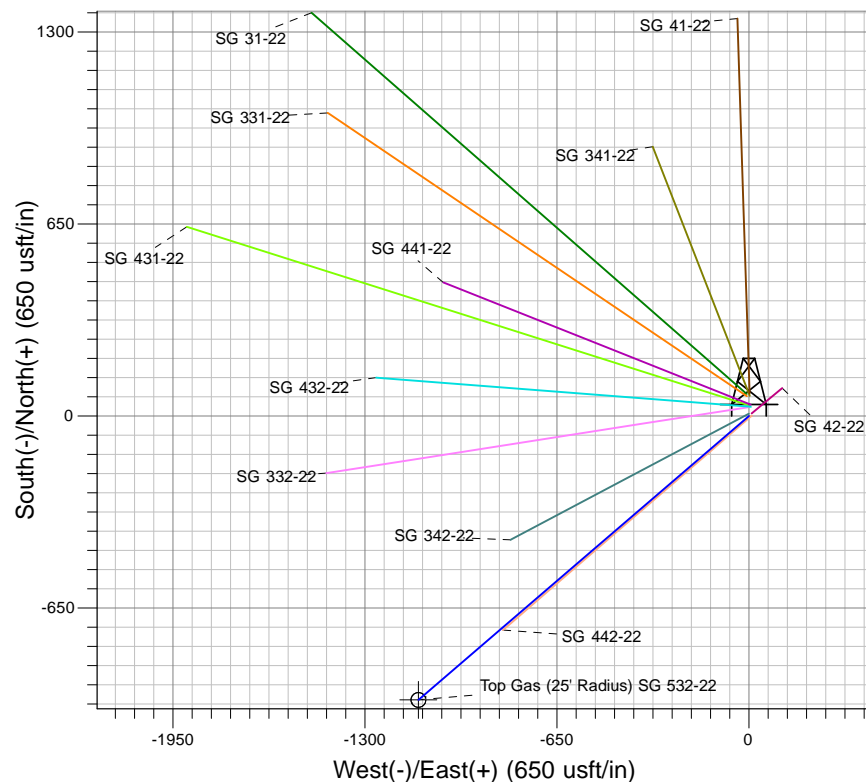
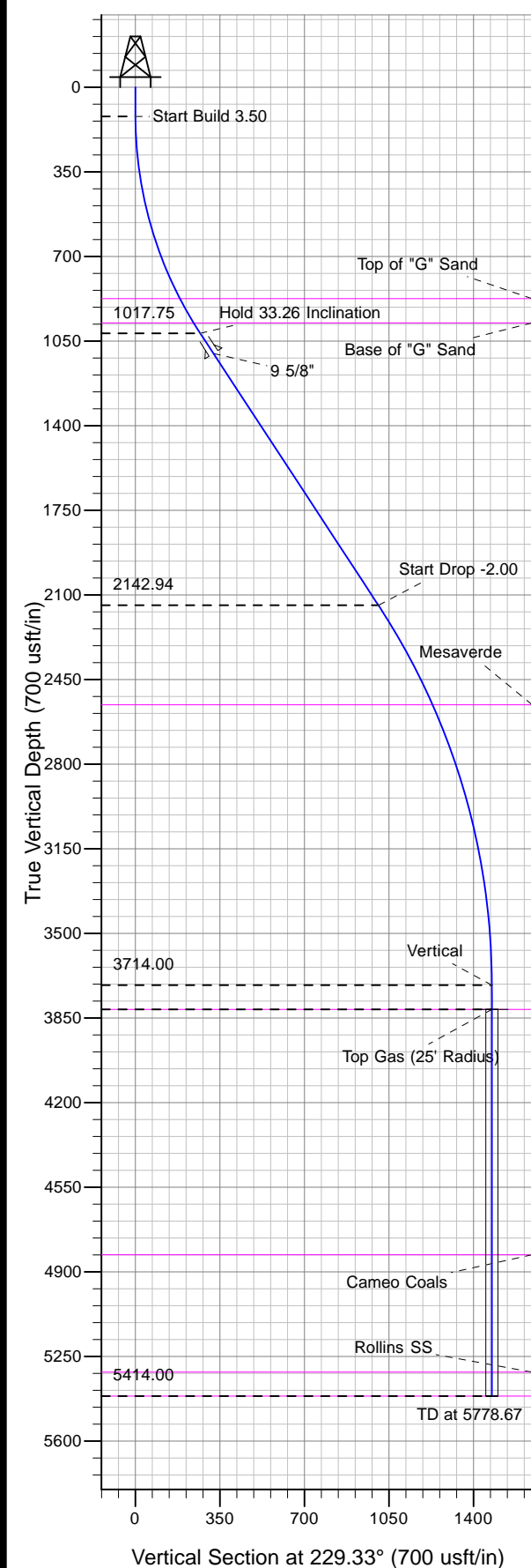




Well Name: SG 532-22
Surface Location: SG 42-22 Pad
North American Datum 1983 , US State Plane 1983 , Colorado Central Zone
Ground Elevation: 5218.00

+N/-S	+E/-W	Northing	Easting	Latitude	Longitude	Slot
0.00	0.00	1590493.39	2269042.97	39.42608	-108.08798	B1

KELLY BUSHING @ 5244.00usft (Nabors 573 (26' RKB) kjs)



Project: SG 22-07S-096W
Site: SG 42-22 Pad
Well: SG 532-22
Design #2 02Jul12 kjs

Azimuths to True North
Magnetic North: 10.25°

Magnetic Field
Strength: 52161.0snT
Dip Angle: 65.66°
Date: 4/5/2012
Model: IGRF2005-10

ANNOTATIONS									
MD	Inc	Azi	TVD	+N/-S	+E/-W	VSect	Departure	Annotation	
120.00	0.00	0.00	120.00	0.00	0.00	0.00	0.00	Start Build 3.50	
1070.21	33.26	229.33	1017.75	-174.74	-203.35	268.12	268.12	Hold 33.26 Inclination	
2415.80	33.26	229.33	2142.94	-655.68	-763.02	1006.04	1006.04	Start Drop -2.00	
4078.67	0.00	0.00	3714.00	-961.48	-1118.89	1475.25	1475.25	Vertical	
4178.67	0.00	0.00	3814.00	-961.48	-1118.89	1475.25	1475.25	Top Gas	
5778.67	0.00	0.00	5414.00	-961.48	-1118.89	1475.25	1475.25	TD at 5778.67	