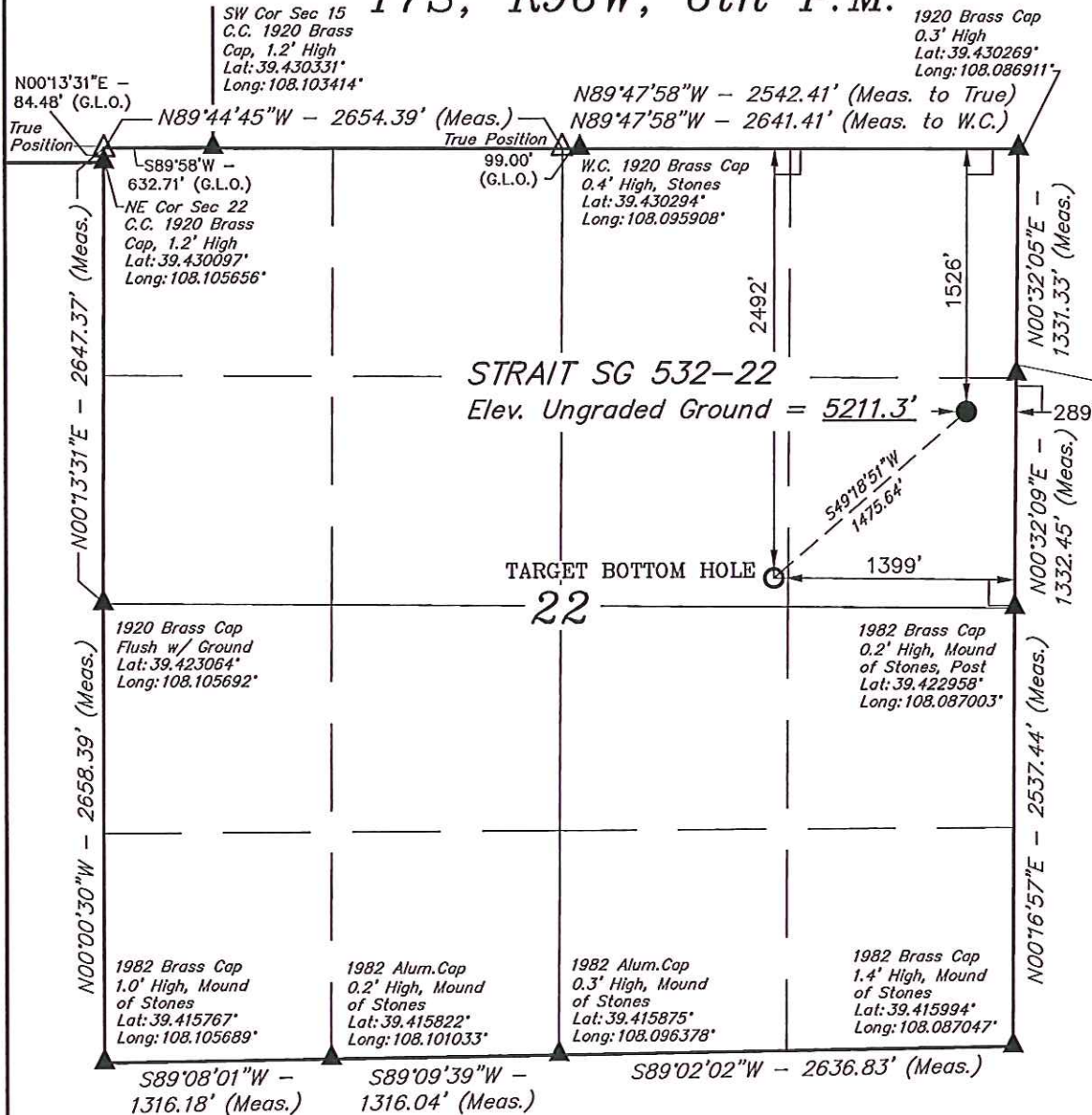


T7S, R96W, 6th P.M.



WPX Energy Rocky Mountain, LLC

Well location, STRAIT SG 532-22, located as shown in the SE 1/4 NE 1/4 of Section 22, T7S, R96W, 6th P.M., Garfield County, Colorado.

BASIS OF ELEVATION

SPOT ELEVATION AT THE NORTHWEST CORNER OF SECTION 30, T5S, R95W, 6th P.M. TAKEN FROM THE FORKED GULCH QUADRANGLE, COLORADO, GARFIELD COUNTY, 7.5 MINUTE SERIES (TOPOGRAPHICAL MAP) PUBLISHED BY THE UNITED STATES DEPARTMENT OF THE INTERIOR, GEOLOGICAL SURVEY. SAID ELEVATION IS MARKED AS BEING 5966 FEET.

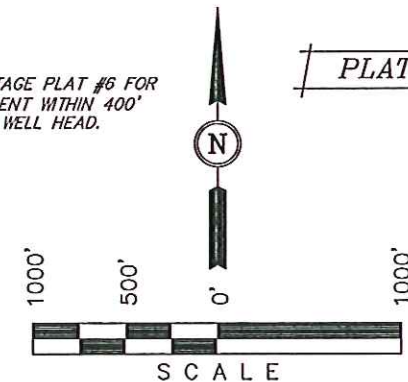
BASIS OF BEARINGS

BASIS OF BEARINGS IS A G.P.S. OBSERVATION.

1920 Alum. Cap
0.3' High
Lat: 39.426617°
Long: 108.086956°

NOTE:
SEE CURRENT FOOTAGE PLAT #6 FOR
EXISTING IMPROVEMENT WITHIN 400'
OF THE PROPOSED WELL HEAD.

PLAT #1



CERTIFICATE

THIS IS TO CERTIFY THAT THE ABOVE PLAT WAS PREPARED AND LOCATION AS SHOWN WAS STAKED ON THE GROUND FROM FIELD NOTES OF ACTUAL SURVEYS MADE BY ME OR UNDER MY SUPERVISION AND THAT THE SAME ARE TRUE AND CORRECT TO THE BEST OF MY KNOWLEDGE AND BELIEF.

REGISTERED LAND SURVEYOR
REGISTRATION NO. 17492
STATE OF COLORADO

05-28-2012

LEGEND:

- └─┘ = 90° SYMBOL
- = PROPOSED WELL HEAD.
- ▲ = SECTION CORNERS LOCATED.

PDOP = 2.0

| NAD 83 (TARGET BOTTOM HOLE) | NAD 83 (SURFACE LOCATION) |
|--|--|
| LATITUDE = 39°25'24.40" (39.423444) | LATITUDE = 39°25'33.90" (39.426083) |
| LONGITUDE = 108°05'31.00" (108.091944) | LONGITUDE = 108°05'16.74" (108.087983) |
| STATE PLANE-(COLO. CENTRAL-NAD 83) | STATE PLANE-(COLO. CENTRAL-NAD 83) |
| N = 1589564.226 | N = 1590493.387 |
| E = 2267897.209 | E = 2269042.967 |

| | | |
|---------------------------|--|-------------------------|
| SCALE 1" = 1000' | DATE SURVEYED: 05-24-12 | DATE DRAWN: 05-26-12 |
| PARTY B.B. C.C. D.R.B. | REFERENCES G.L.O. PLAT | |
| WEATHER WARM | FILE WPX Energy Rocky Mountain, LLC | |