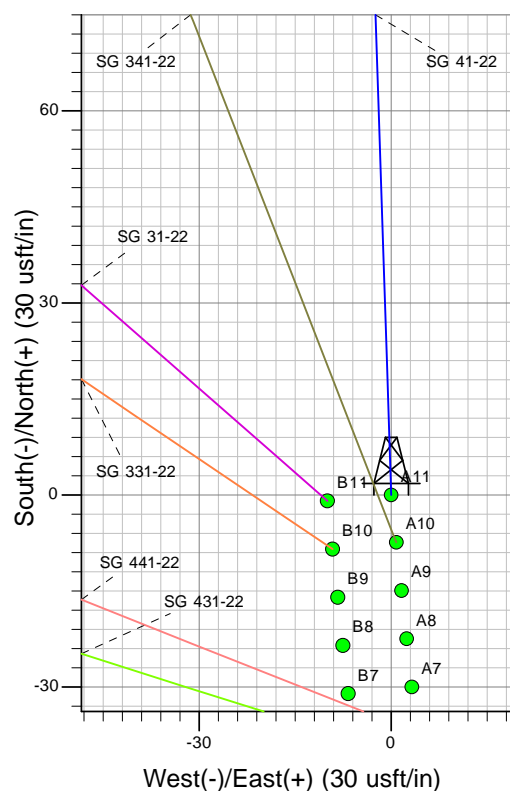
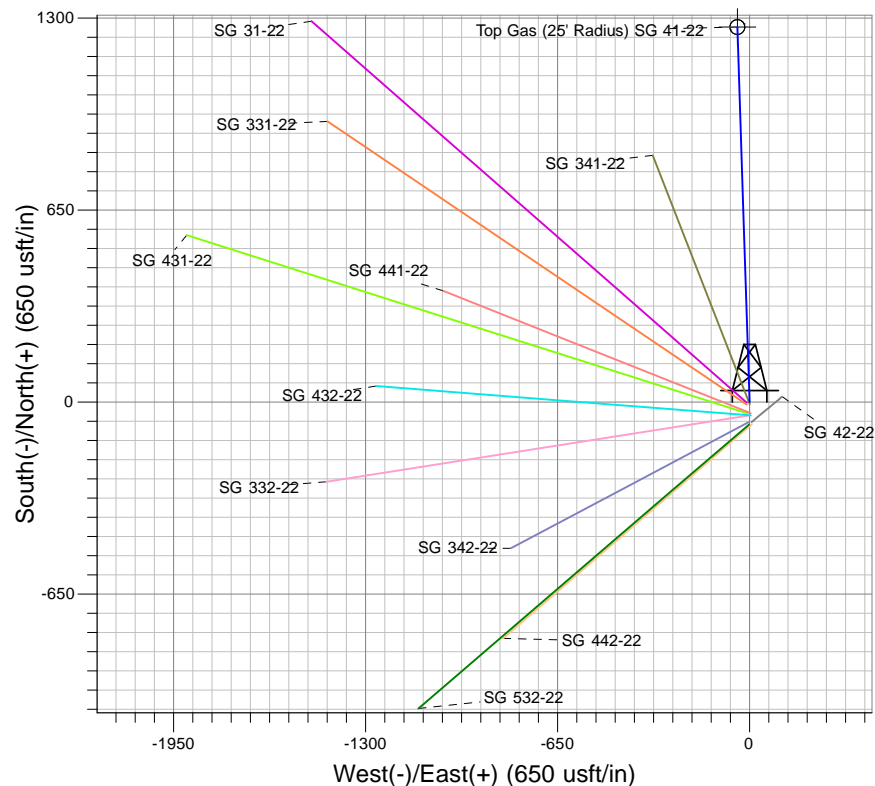
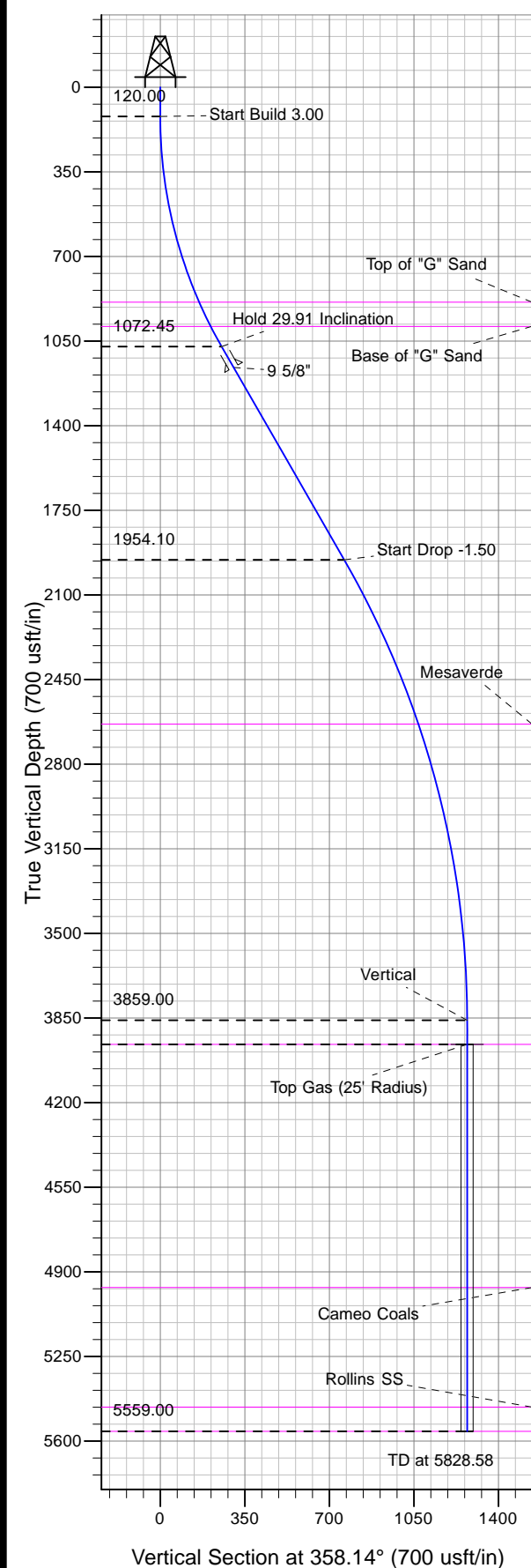




Well Name: SG 41-22
 Surface Location: SG 42-22 Pad
 North American Datum 1983 , US State Plane 1983 , Colorado Central Zone
 Ground Elevation: 5218.00
 +N/-S 0.00 +E/-W 0.00 Northing 1590568.86 Easting 2269047.24 Latitude 39.42629 Longitude -108.08798 Slot A11
 KELLY BUSHING @ 5244.00usft (Nabors 573 (26' RKB) kjs)



Project: SG 22-07S-096W
 Site: SG 42-22 Pad
 Well: SG 41-22
 Design #2 02Jul12 kjs

T M
 Azimuths to True North
 Magnetic North: 10.25°
 Magnetic Field
 Strength: 52161.1snT
 Dip Angle: 65.66°
 Date: 4/5/2012
 Model: IGRF2005-10

ANNOTATIONS

MD	Inc	Azi	TVD	+N/-S	+E/-W	Vsect	Departure	Annotation
120.00	0.00	0.00	120.00	0.00	0.00	0.00	0.00	Start Build 3.00
1117.14	29.91	358.14	1072.45	254.31	-8.26	254.44	254.44	Hold 29.91 Inclination
2134.30	29.91	358.14	1954.10	761.30	-24.74	761.71	761.71	Start Drop -1.50
4128.58	0.00	0.00	3859.00	1269.92	-41.26	1270.59	1270.59	Vertical
4228.58	0.00	0.00	3959.00	1269.92	-41.26	1270.59	1270.59	Top Gas
5828.58	0.00	0.00	5559.00	1269.92	-41.26	1270.59	1270.59	TD at 5828.58