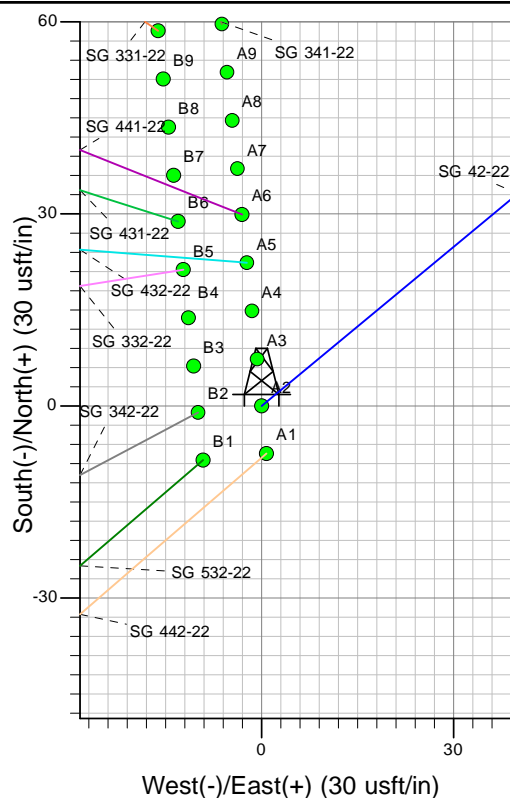
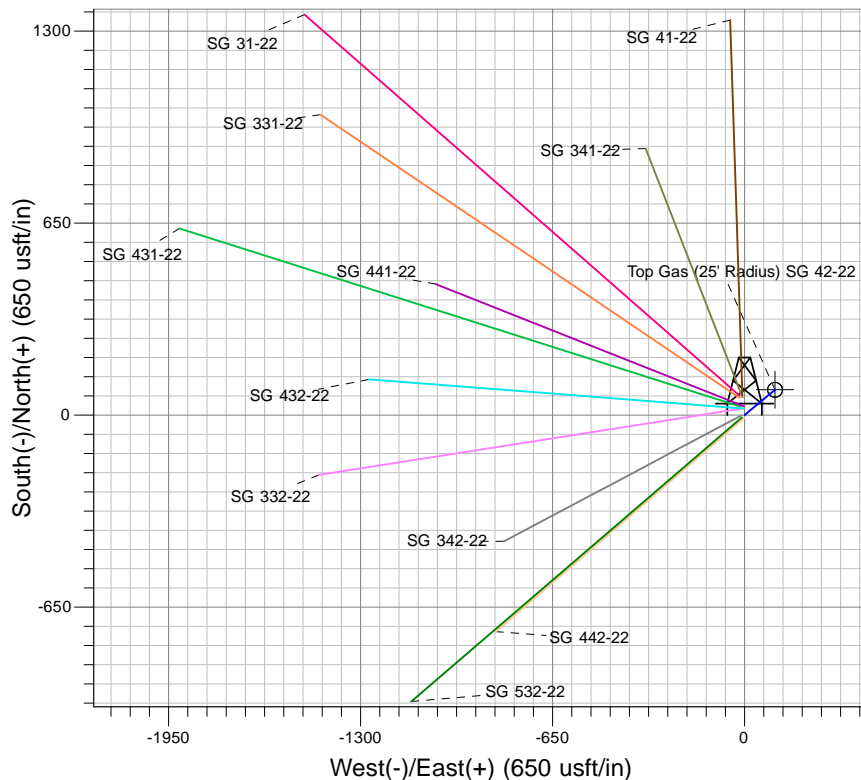
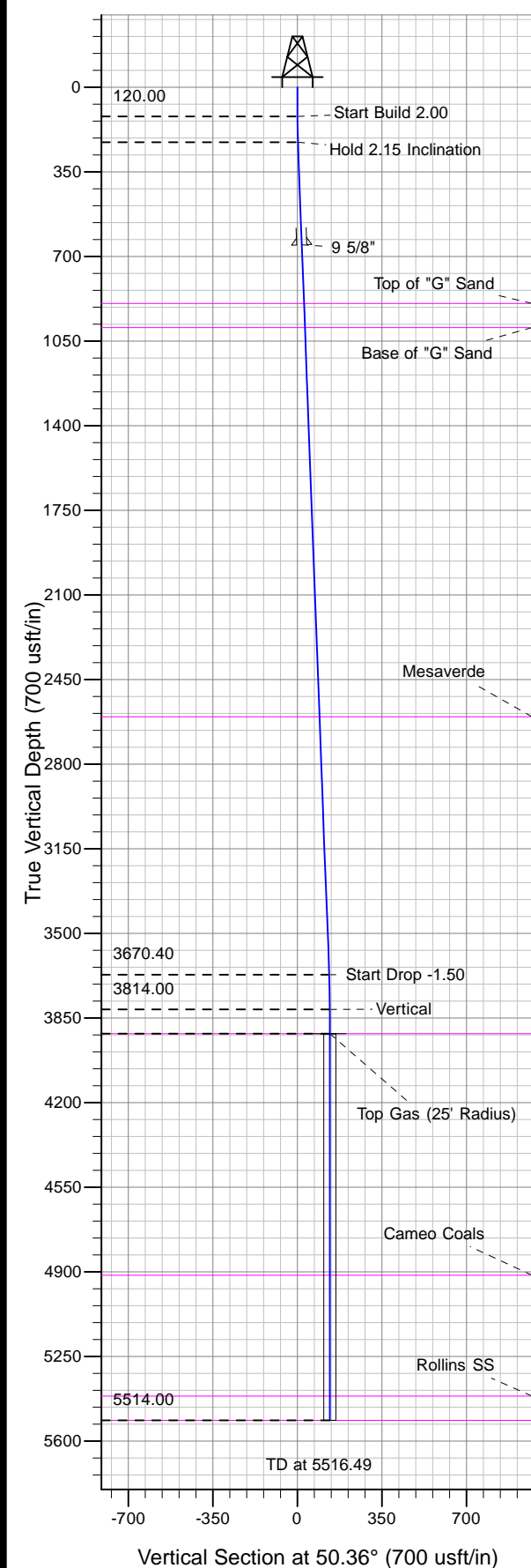




Well Name: SG 42-22
 Surface Location: SG 42-22 Pad
 North American Datum 1983 , US State Plane 1983 , Colorado Central Zone
 Ground Elevation: 5218.00

+N/-S	+E/-W	Northing	Easting	Latitude	Longitude	Slot
0.00	0.00	1590501.60	2269052.35	39.42611	-108.08795	A2

KELLY BUSHING @ 5244.00usft (Nabors 573 (26' RKB) kjs)



Project: SG 22-07S-096W
 Site: SG 42-22 Pad
 Well: SG 42-22
 Design #2 02Jul12 kjs

Azimuths to True North
 Magnetic North: 10.25°
 Magnetic Field
 Strength: 52161.0snT
 Dip Angle: 65.66°
 Date: 4/5/2012
 Model: IGRF2005-10

ANNOTATIONS

MD	Inc	Azi	TVD	+N/-S	+E/-W	Vsect	Departure	Annotation
120.00	0.00	0.00	120.00	0.00	0.00	0.00	0.00	Start Build 2.00
227.72	2.15	50.36	227.70	1.29	1.56	2.03	2.03	Hold 2.15 Inclination
3672.86	2.15	50.36	3670.40	83.92	101.29	131.54	131.54	Start Drop -1.50
3816.49	0.00	0.00	3814.00	85.64	103.37	134.24	134.24	Vertical
3916.49	0.00	0.00	3914.00	85.64	103.37	134.24	134.24	Top Gas
5516.49	0.00	0.00	5514.00	85.64	103.37	134.24	134.24	TD at 5516.49